



ETHICAL CLOTHING CO

WOMENS JULIETTE PLAIN LS BLOUSE 44210

A lightweight fabric with high drape and soft hand feel of silk. Easy care and durable, the Juliette blouse also features inverted back pleat tucks.

DETAILS



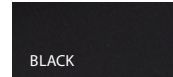
JULIETTE

100% Polyester

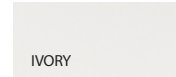
A opulent lightweight fabric with high drape and soft hand feel of silk. Easy-care, machine washable with little to no pressing required.



COLOURS



BLACK



IVORY



GARMENT MEASUREMENTS

SIZE	4	6	8	10	12	14	16	18	20	22	24	26
½ BUST (CM)	44.8	46	48.5	51	53.5	56	58.5	62	64.5	67	69.5	72

STYLE DETAILS

- Easy fit style
- Concealed placket
- Back inverted pleat featured to provide shape and extra movement
- All seams are double turned for quality in and out
- Longer back length
- Curved front hemline
- Long sleeve with button up cuffs

MATCH WITH

- Match back with other white or black tops
- Add as a secondary colour option, to add variety and depth to a range

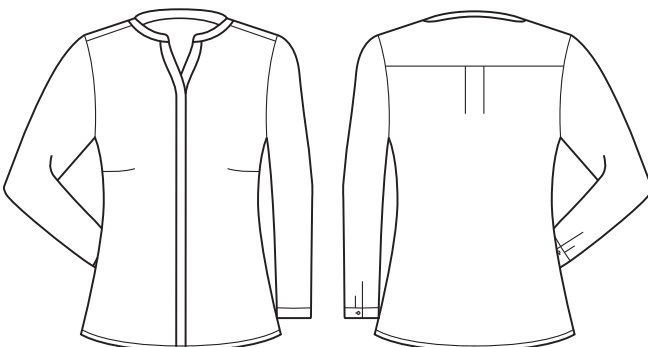
STYLE TIPS

- Sleeve can be rolled up for a more casual 3/4 look
- Can be worn tucked into pants or worn out

RECOMMENDED INDUSTRY

- Corporate/office wear

SPEC DRAWING



ALL MEASUREMENTS ARE APPROXIMATE AND ARE FOR REFERENCE ONLY. COLOURS ARE REPRODUCED AS CLOSELY AS PRINTING ALLOWS.