



ETHICAL CLOTHING CO



WOMENS SHORT SLEEVE DRESS 30112

A classic shift dress is a staple in every womens wardrobe. Fully lined with back zip, multi pleat hem and designed to finish above the knee.

DETAILS



COOL STRETCH

92% Polyester 8% Bamboo Charcoal

Versatile and durable suiting fabric. Breathable fabric perfect for warmer climates keeping you cool and dry. Mechanical stretch for extra comfort and anti-bacterial finish to eliminate odour.

Lining: Stretch Polyester

Fabric care instruction:

- Pants and Skirts - Warm or cold machine wash. Wash with similar colours. Do not bleach, soak or tumble dry. Line dry in shade. Warm iron. Recommend dry clean 30°C.
- Jackets - Dry clean only 30°C.



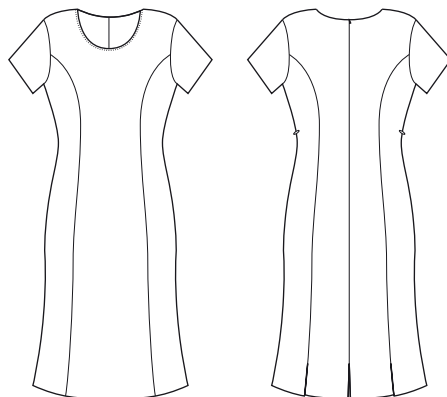
COLOURS



GARMENT MEASUREMENTS

SIZE	4	6	8	10	12	14	16	18	20	22
½ BUST (CM)	40.8	42	44.5	47	49.5	52	54.5	58	60.5	63
½ WAIST (CM)	32.8	34	36.5	39	41.5	44	46.5	50	52.5	55

SPEC DRAWING



ALL MEASUREMENTS ARE APPROXIMATE AND ARE FOR REFERENCE ONLY. COLOURS ARE REPRODUCED AS CLOSELY AS PRINTING ALLOWS.