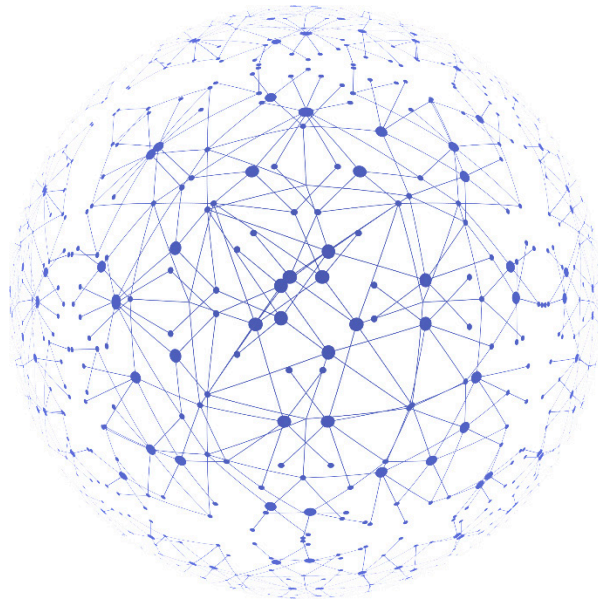


BeMA.BioScan

Bioenergetic analysis

Test series 5 test persons



Sternenlotos

STARGATE

BLOOMING LIFE



Client

BLOOMING LIFE GmbH

Brandlweg 2
6020 Innsbruck
Austria
Phone: 0043 (0) 512 55 99 99
E-mail: sternenlotos@bloomingle.com

Project execution

BeMA.BioScan - Zentrum für Bioenergetische Messungen und Analysen
Paul von Sternbachstr.1
39031 Bruneck
Italy
Tel.: +39 349 8853188
info@bioscan.it

5 anonymous test participants

Duration of the project: 10.03.2022 until 22.03.2022



Table of contents

BeMA.Bioscan measurement method	4
Description of the product	4
Project description and target.....	5
Test	5
Test contents and evaluation	5
Harmonic versus disharmonic adaptation.....	5
Test conditions	6
Agreement with the client.....	6
Procedure of the test.....	6
Legend of the measurement of bioactive zones.....	7
Preliminary information and carrying out of the measurements	8
Test series	9
Test person 1	10
Test person 2	12
Test person 3	14
Test person 4	6
Test person 5	18
Conclusion of the BeMA.Bioscan test series Sternenlotos STARGATE.....	20
Overall conclusion of the test series	24
Appendix.....	25

Note

The BeMA.Bioscan test series is the intellectual property of BeMA.Bioscan as the contractor, whereby the client may exploit the results of the test series. The contractor may continue to use the contents of the test series subject to the client's data protection and confidentiality obligations. The contents of the BeMA.Bioscan test report may not be altered or distributed in abridged form without the consent of BeMA.Bioscan. Subject of the test report are bioenergetic measurements and analyses according to BeMA.Bioscan guidelines. BeMA.Bioscan does not make orthodox medical diagnoses/analyses, but measures and evaluates the subtle energetic field of the human being.

The client is solely responsible for the quality and maintenance of the tested product. Investigation of the production, the mechanism of action or the interpretation of the client's product are beyond the responsibility or task of the contractor.



BeMA.Bioscan measuring method

The biofunctional segmental analysis serves as measuring method.

By means of current electrodes on the forehead, hands and feet, the energy system in the human body is measured. This allows a making visible of several energetic levels of a human organism.

The computer-asisted system, which is also used in hospitals and in space travel after a research of 25 years, avoids user errors and shows objective test results. These are displayed graphically and are easy to read.

Before- and after-comparison show the effect on the organism.

Description of the product

The **Sternenlotos STARGATE** is literally a gateway into a new paradigm. The powerful, high vibrational Sternenlotos information raises the entire system into a new frequency and accompanies the user into his whole true potential, his I AM.

Burdens of all kind cease to exist in a few minutes, one comes into his own stability, gets grounded, re-aligned and expanded. One feels vital, relaxed and strengthened. The Sternenlotos STARGATE is a tool of the New Era that allows the user to feel the full power of the Sternenlotos on all levels.

The multiple frequencies reach the human system via the foot chakras. What then happens is perceived by each person in his very own way. The process and the transformation always take place in an individual pace. Everything is possible, but nothing happens that one does not want. Quelle: Vgl. <https://www.bloominglife.com/products/sternenlotos-stargate>

[bloominglife.com/products/sternenlotos-stargate](https://www.bloominglife.com/products/sternenlotos-stargate)



Sternenlotos STARGATE



Project description and objective

The object of study of the present bioenergetic analysis was the **Sternenlotos STARGATE**. The aim was to determine whether and to what extent a change in the energetic bioactive zones of the human body can be measured by the **Sternenlotos STARGATE**. The **Sternenlotos STARGATE** was thereby placed under the feet of the test person, respectively the test person stood on the **Sternenlotos STARGATE**.

The test served the objective determination of the functionality/effectiveness of the **Sternenlotos STARGATE**.

For this, the five test persons were subjected to a primary testing and a secondary testing. The primary testing served to determine the initial situation of the energetic level of the body, the secondary testing measured the energy levels of the body after the test persons had been informed by the **Sternenlotos STARGATE**.

The final analysis shows the end results (differences between primary testing and secondary testing) of the testing and illustrates the bioenergetic values with the help of diagrams.

The energetic measurements were taken with IMEDIS.

Test

Test contents and evaluation

The bioenergetic changes of the test persons in the area of the bioactive zones were examined. The focus of the observation was always on harmonising in the direction towards the „optimal energy state“. In order to achieve a result that is as transparent as possible positive energy changes, negative energy changes and also unchanged states in the human organism were recorded. Negative energy changes are always to be seen as a distance from the optimal state.

Harmonic versus disharmonic adaptation

Harmonic adaptation includes the positive change of the energy system in the direction of the OPTIMUM. It involves a reduction of the energetic deviation, ideally until the optimal state is reached.

On the other hand the **disharmonic adaptation** relates to the deterioration of the energy level: the measured values move away from the optimal state. This adaptation is common and completely normal if it is within a certain range. Experience shows that the human energy system reacts with initial aggravations that worsen certain energetic areas. The „human“ system makes adjustments, for example, by „withdrawing“ energy from some areas and adding it to others. If the harmonic adaptation outweighs the disharmonic adaptation in terms of quantity, the effect is positive.

Test conditions

The primary and secondary testings on the test persons always took place under the same conditions. During the test phase care was taken to ensure that the test person was not exposed to any external influences that could distort the tests. Therefore, the tests were carried out quickly one after the other in order to exclude distortions. In this way, it is also possible to determine whether the **Sternenlotos STARGATE** is capable of producing an immediate effect.

Agreement with the client

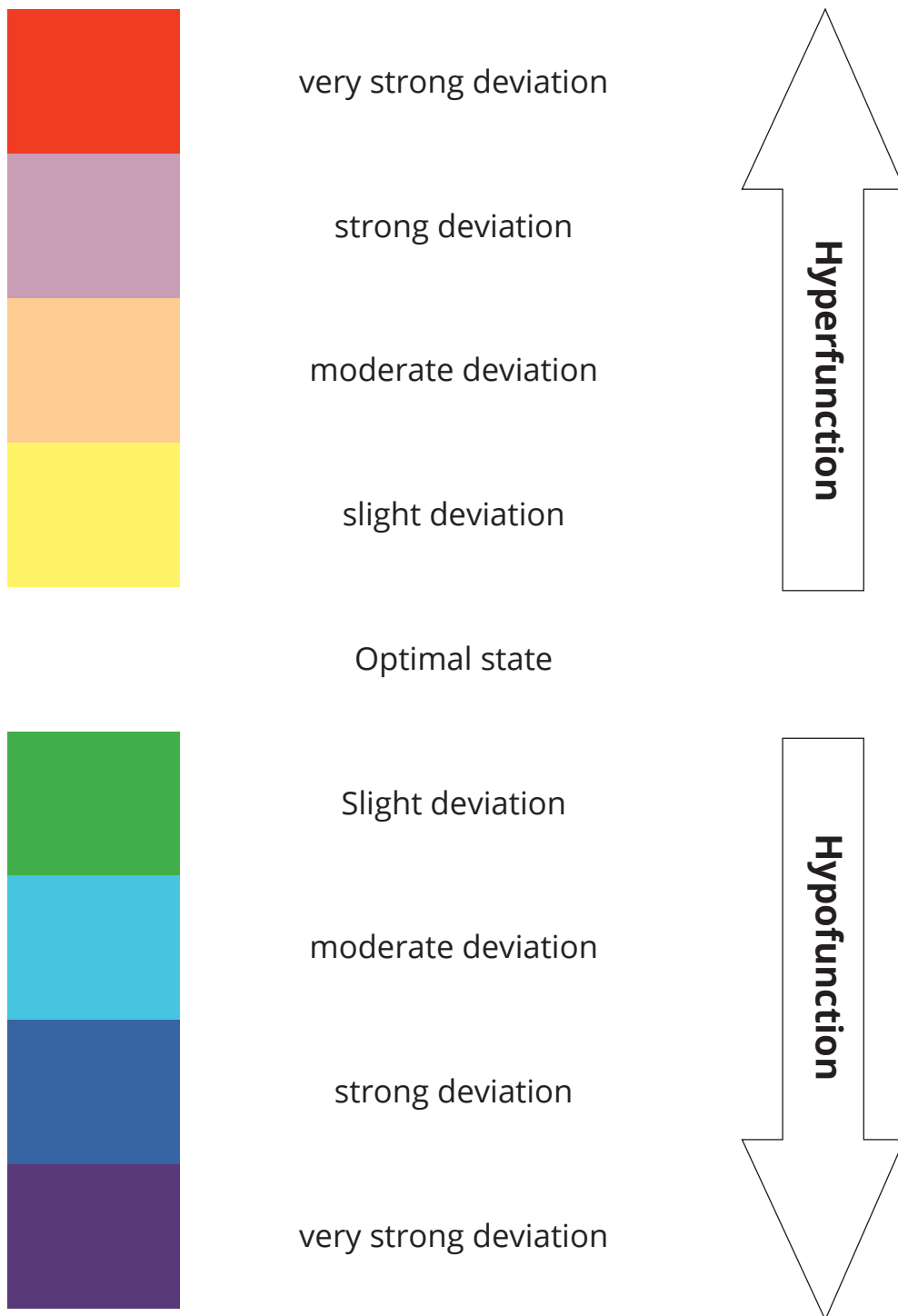
Each test persons should be measured in his energetic status by the **Sternenlotos STARGATE**. The second measurement was taken after a 10-minute application of the **Sternenlotos STARGATE**.

Procedure of the test

Step 1	Primary measurement: Determination of the initial energetic situation of the test person. The actual condition is measured by attaching the forehead, hand and foot electrodes. Immediate recording of the measurement results and documentation
Step 2	The test person stands on the Sternenlotos STARGATE and is informed with the STARGATE frequencies.
Step 3	The test person spends 10 minutes standing on the Sternenlotos STARGATE .
Step 4	Secondary measurement: Determination of the energetic situation of the test person. The energy level is measured by reattaching the forehead, hand and foot electrodes after the test person has been informed by the Sternenlotos Stargate. Immediate recording of the measurement results and documentation



Legend Measurement of bioactive zones



The energetic deviation in hyper- and hypofunction of the bioactive zones in the human body is illustrated by colours in the measurement evaluations.



Preliminary information and carrying out the measurements

In the following, the bioactive zones in the body that show a deviation from the energetic optimal state are shown for each test person in terms of primary and secondary measurement. This is always a hyperfunction (overfunction) or hypofunction (under-function) in the energetic range. All white zones are in the optimal energetic range. The secondary measurement indicates the zones that have undergone a change after the test person was informed by the Sternenlotos STARGATE. The small colour table makes it easier to read the deviations.

„Final analysis“ diagram

The diagram below the final analysis of each test person shows the comparison between the primary and the secondary measurement.

Shown in **blue** are the percentages of bioactive zones that experienced a harmonisation of the energy level (**harmonic adaptation**) with an approach to the optimal state, after the test person was informed by the **Sternenlotos STARGATE**. In **orange**, those zones are shown in percentages that have experienced a **disharmonic adaptation** with a distance from optimum state. The **grey** part indicates all those zones that have **not undergone an energetic change at all**.

A possible reason for disharmonic adaptation:

The organism creates a harmonious, positive adaptation towards the optimum range in various bioactive zones, in return it has to „shift“ the energy into other zones more towards hyper or hypo function. Later it can balance this again. In any case, according to experience, a so-called „initial reaction“ should be considered, as it is known from the field of homeopathy and naturopathy.

The „Conclusion“ section

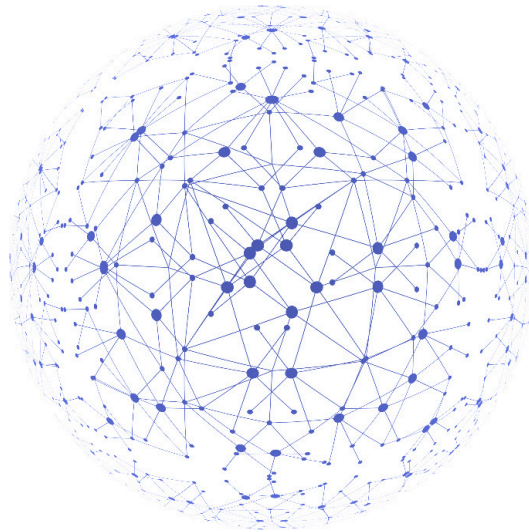
This section provides an overall picture of the test series in order to better grasp the effect of the product **Sternenlotos STARGATE** and to be able to evaluate it as a whole.

With the help of **various evaluations**, a clearly comprehensible picture should emerge as to whether the test subjects responded to the product and how their bioactive zones reacted to it.



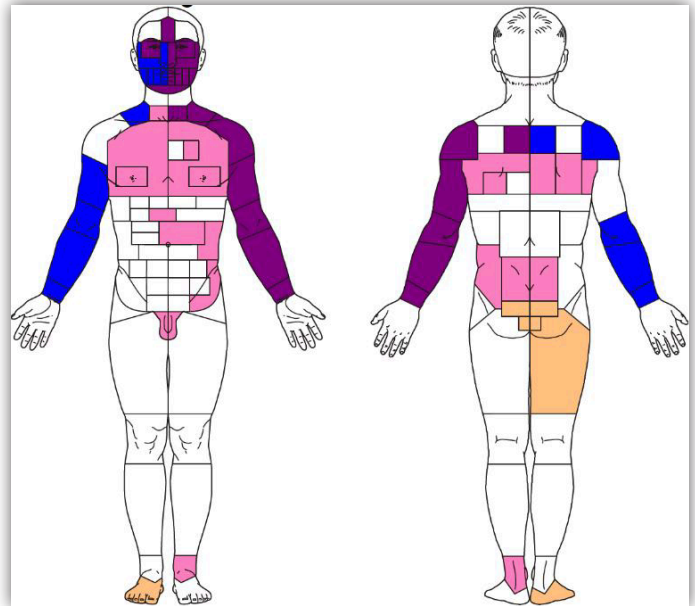
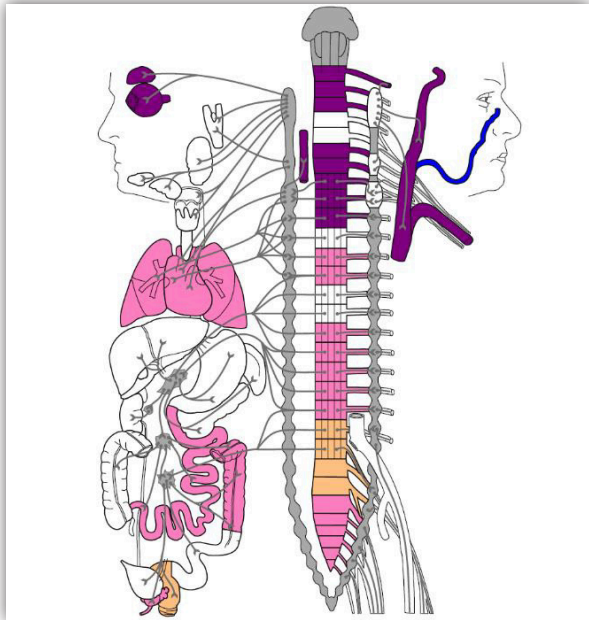
Testreihe

Test person 1 to 5



Test person 1

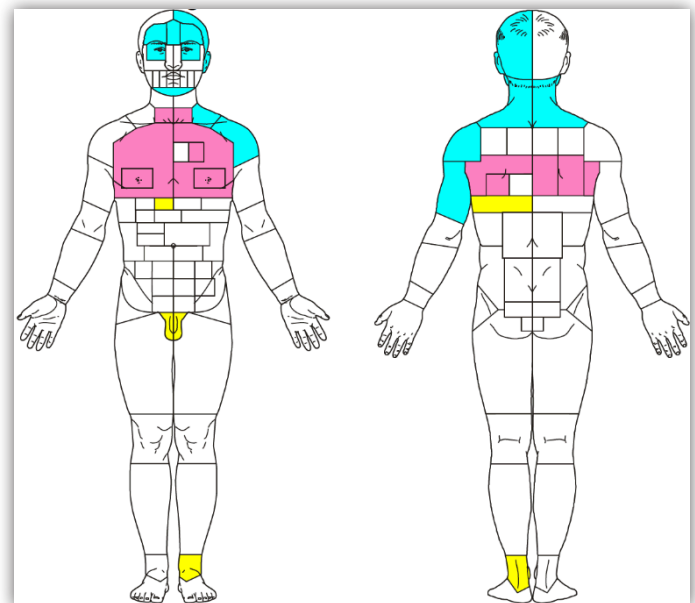
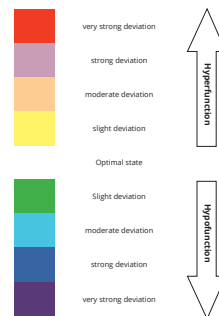
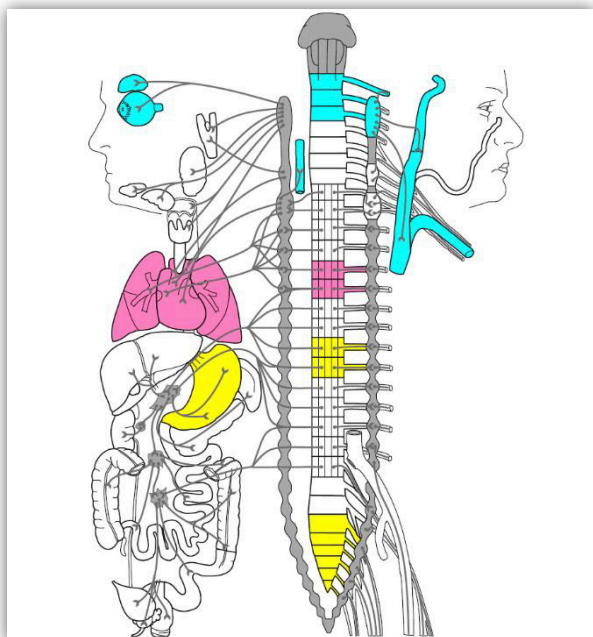
Primary measurement (first measurement)



Bioactive zones

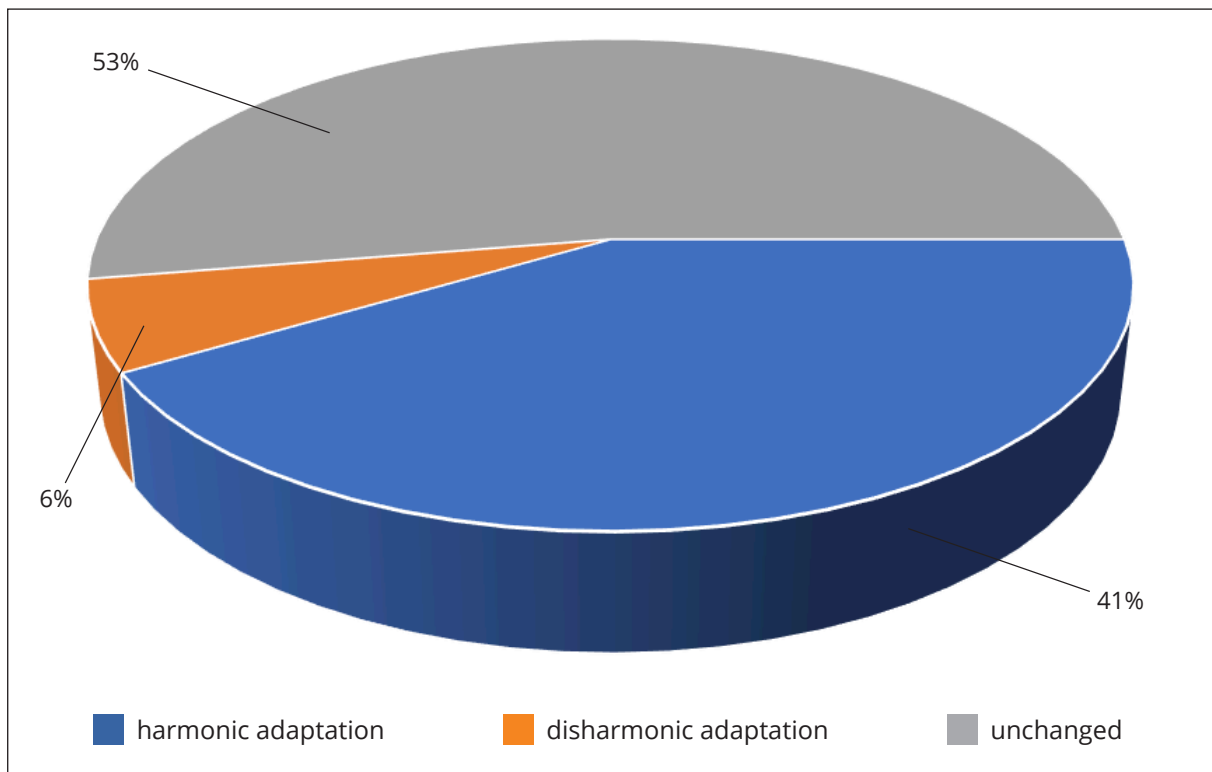
Secondary measurement (second measurement)

Bioactive zones





Final analysis (difference between primary and secondary measurement)



Compared to the first measurement 41 percent of the bioactive zones of the test person have experienced an energetic harmonisation, i.e. improvement. The measured mean value is 62 percent. The maximum values that could be measured were 100 percent, the minimum values 33 percent.

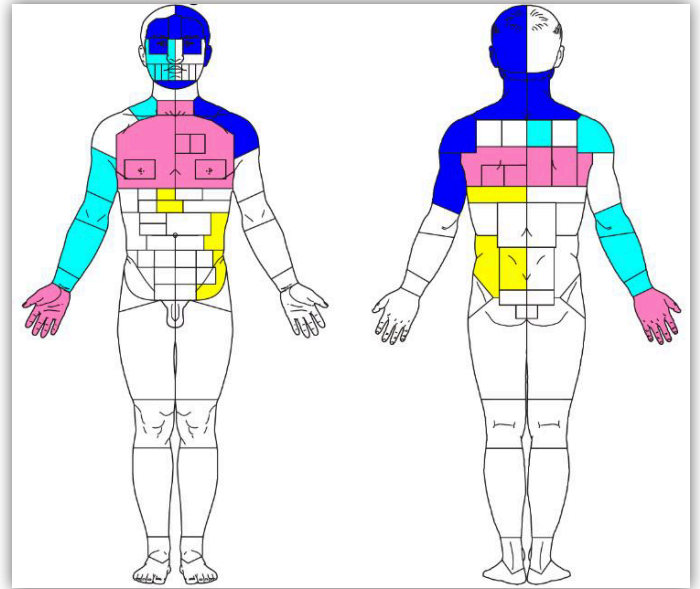
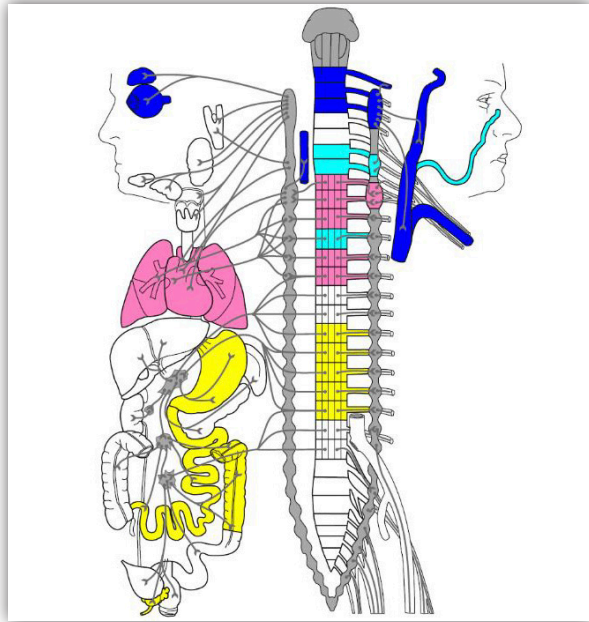
An energetic disharmonic adaptation was measurable in only 6 percent of the bioactive zones. The average value here is 33 percent. A maximum value of 35 percent and a minimum value of 27 percent could be determined.

53 percent of the bioactive zones remained without energetic change.



Test person 2

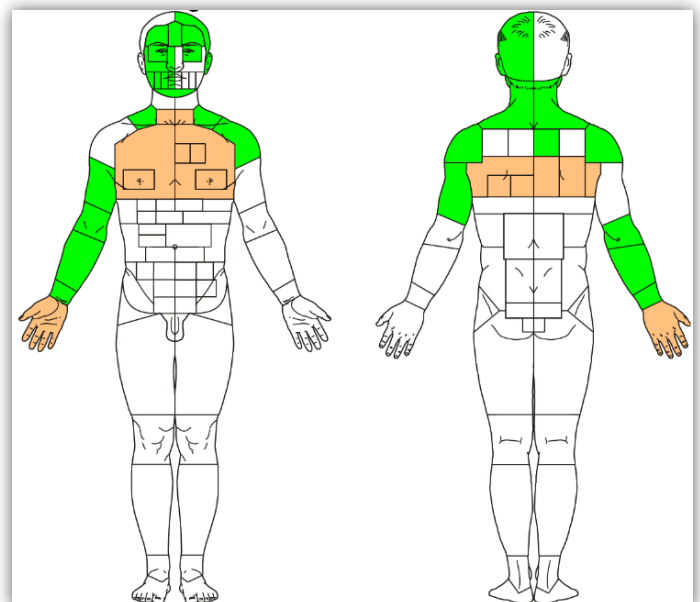
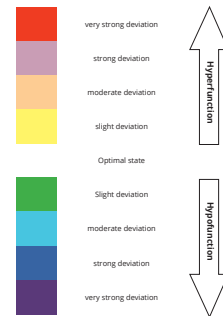
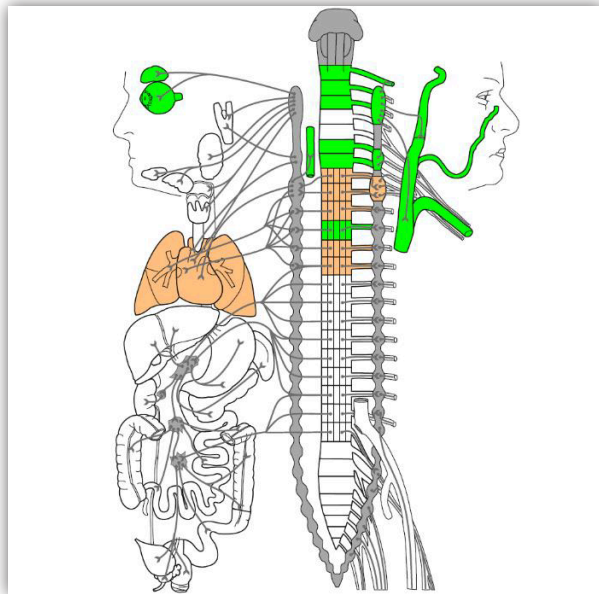
Primary measurement (first measurement)



Bioactive zones

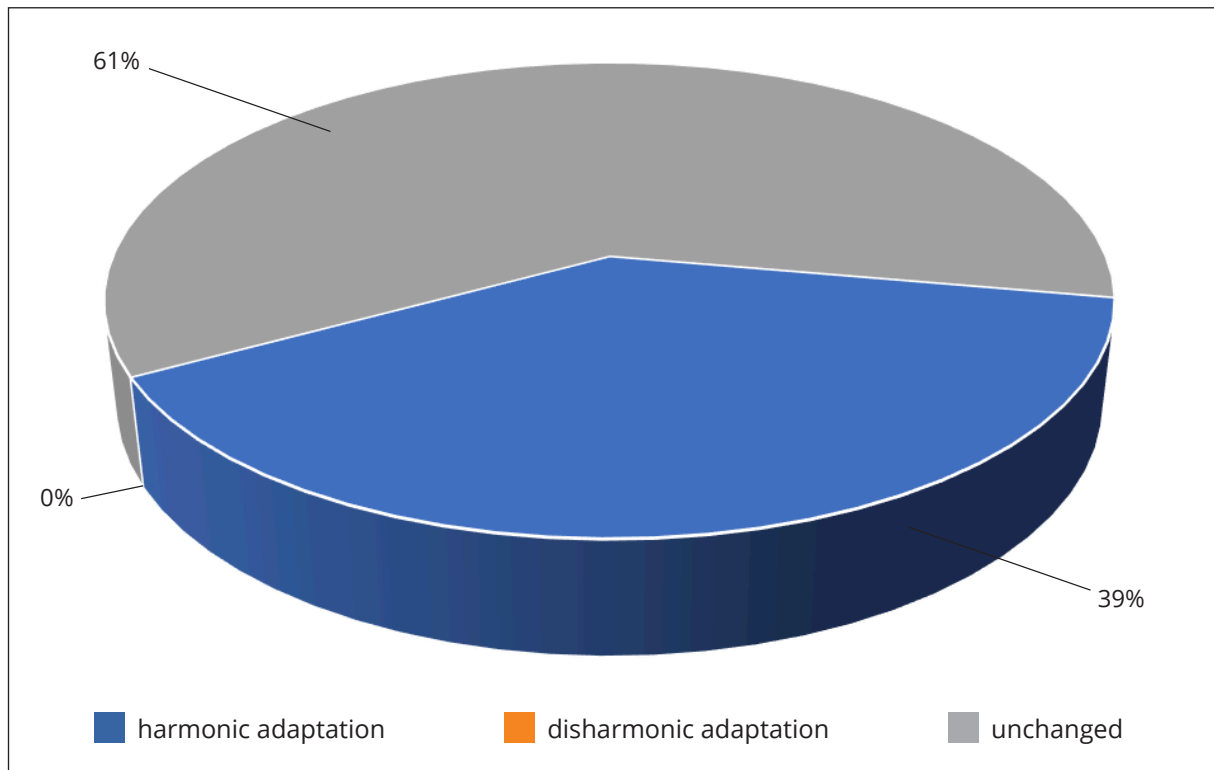
Secondary measurement (second measurement)

Bioactive zones





Final analysis (difference between primary and secondary measurement)



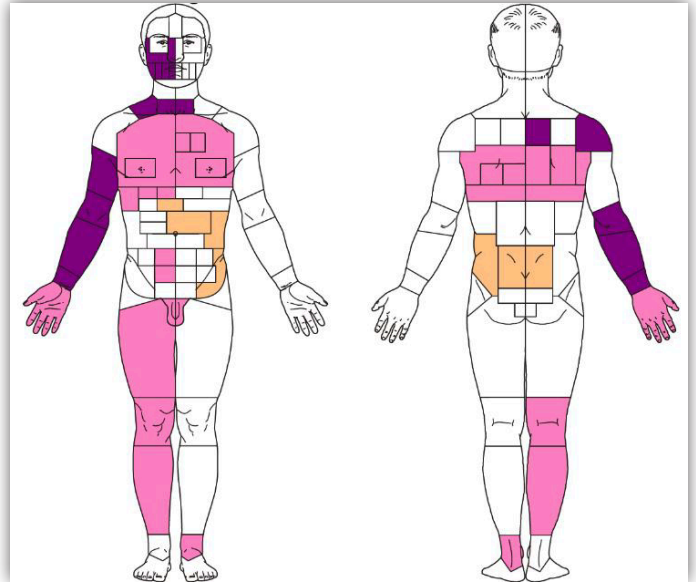
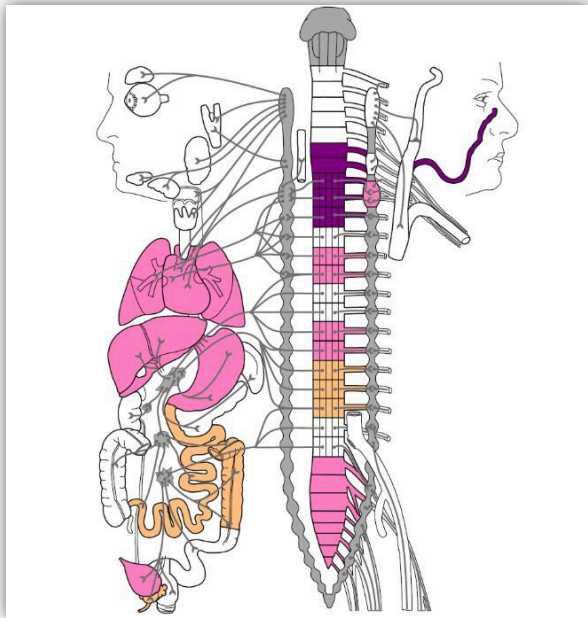
Test person 2 reacted with a harmonic adaptation in 39 percent of the bioactive zones. The maximum value was measured at 31 percent, the minimum value at 13 percent, the mean value of the harmonic adaptation is 21 percent.

61 percent of the bioactive zones showed no change after treatment with the Sternenlotos STARGATE.

And not a single bioactive zone reacted disharmoniously.

Test person 3

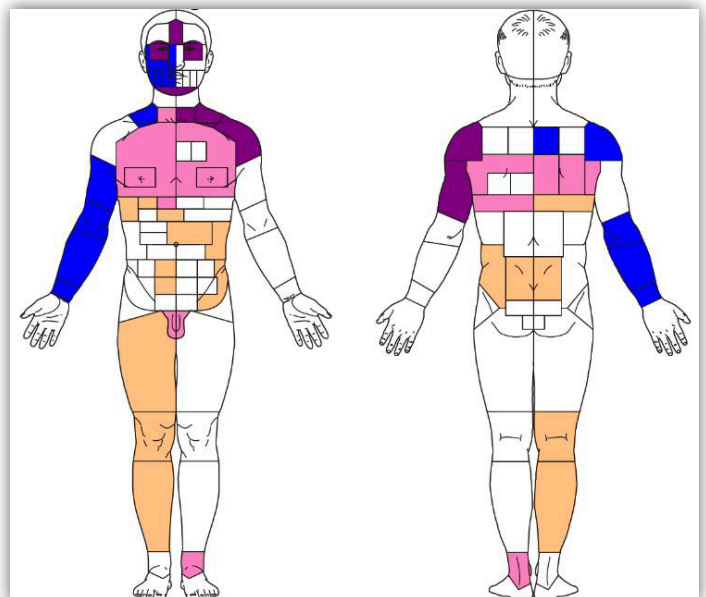
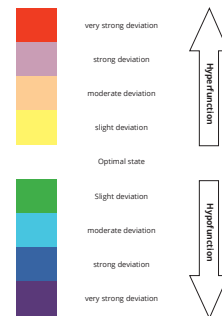
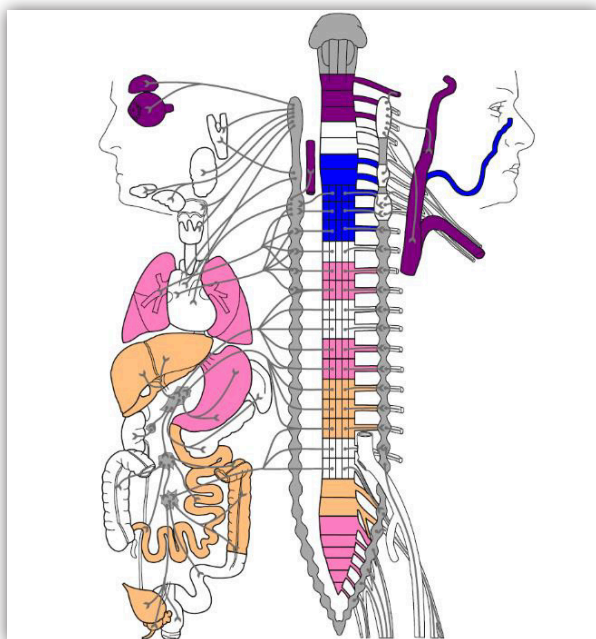
Primary measurement (first measurement)



Bioactive zones

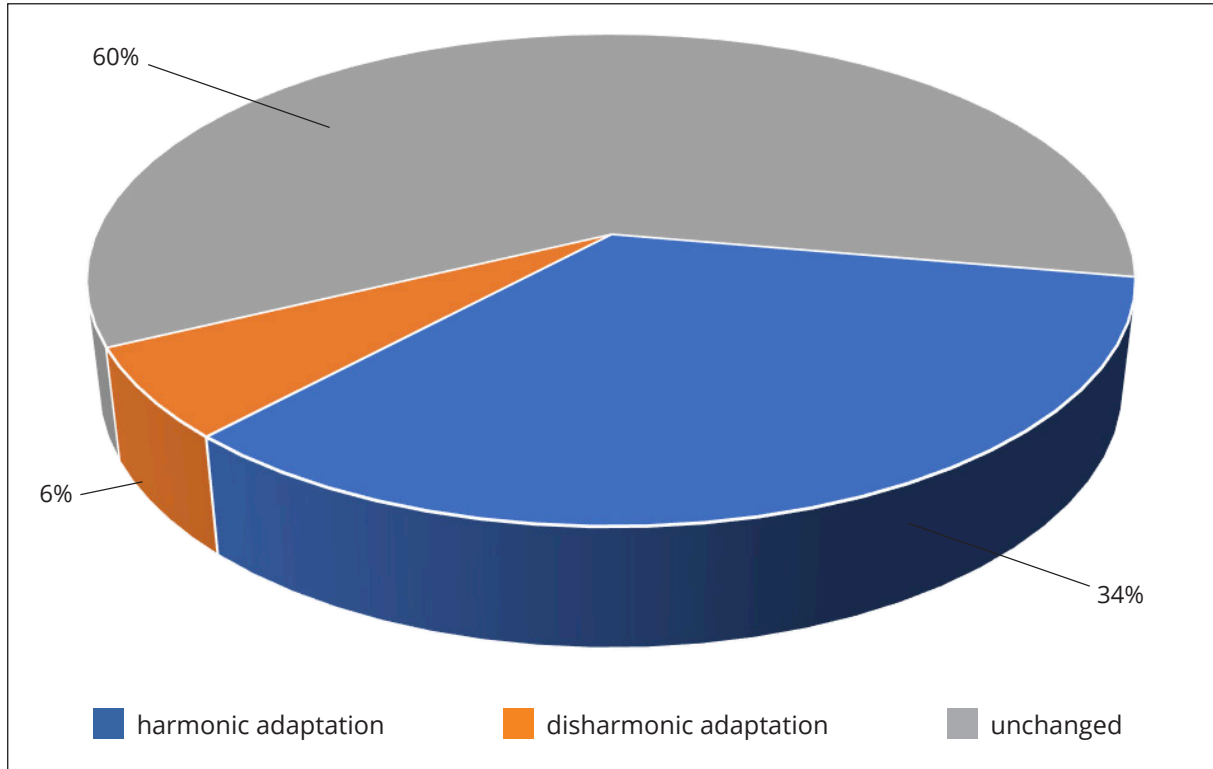
Secondary measurement (second measurement)

Bioactive zones





Final analysis (difference between primary and secondary measurement)



The measurements show an adaptation of the bioenergetic zones of 34 percent in the harmonic range. Within this range, the bioactive zones show a mean value of 29 percent adaptation. The maximum value is 72 percent, the minimum value is indicated with 6 percent.

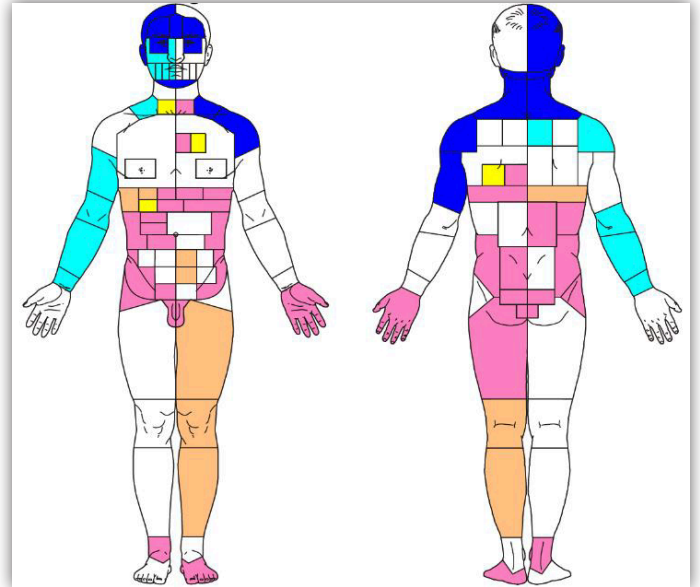
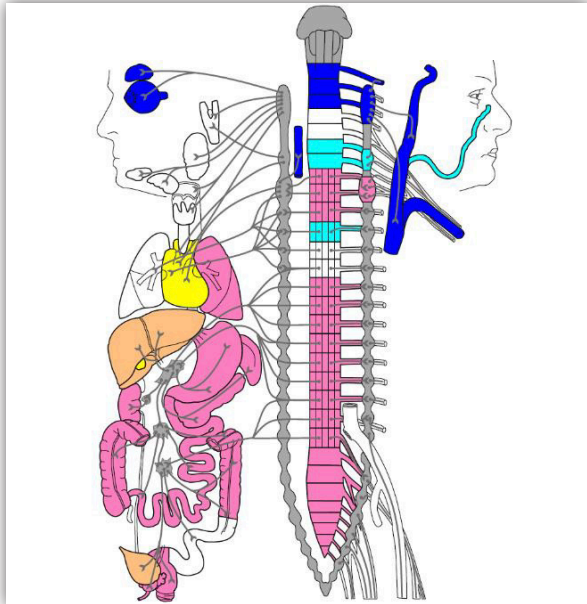
A disharmonic adaptation and therefore a distance from the optimal state could be measured in 6 percent of the bioactive body zones. Here, the highest value (maximum value) as well as the lowest value (minimum value) are at 100 percent.

60 percent of the zones remained at the initial energetic level.



Test person 4

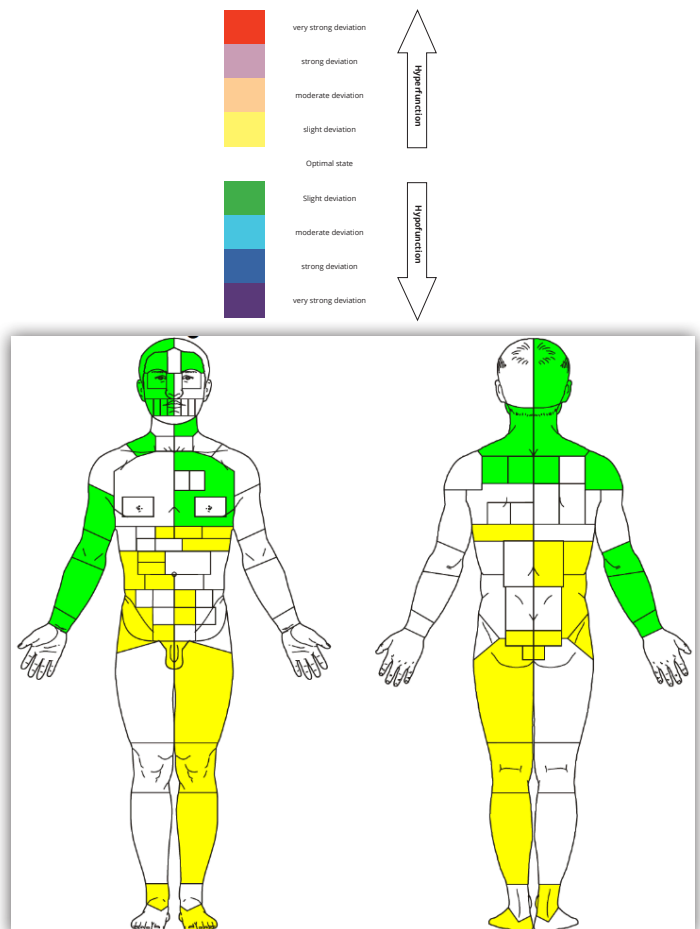
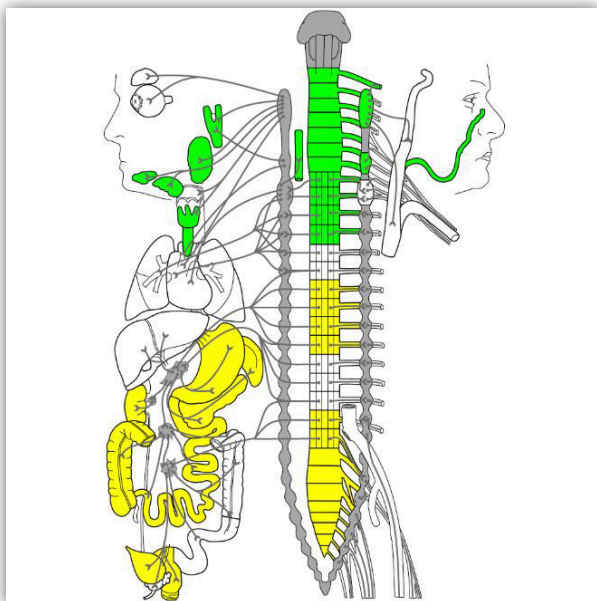
Primary measurement (first measurement)



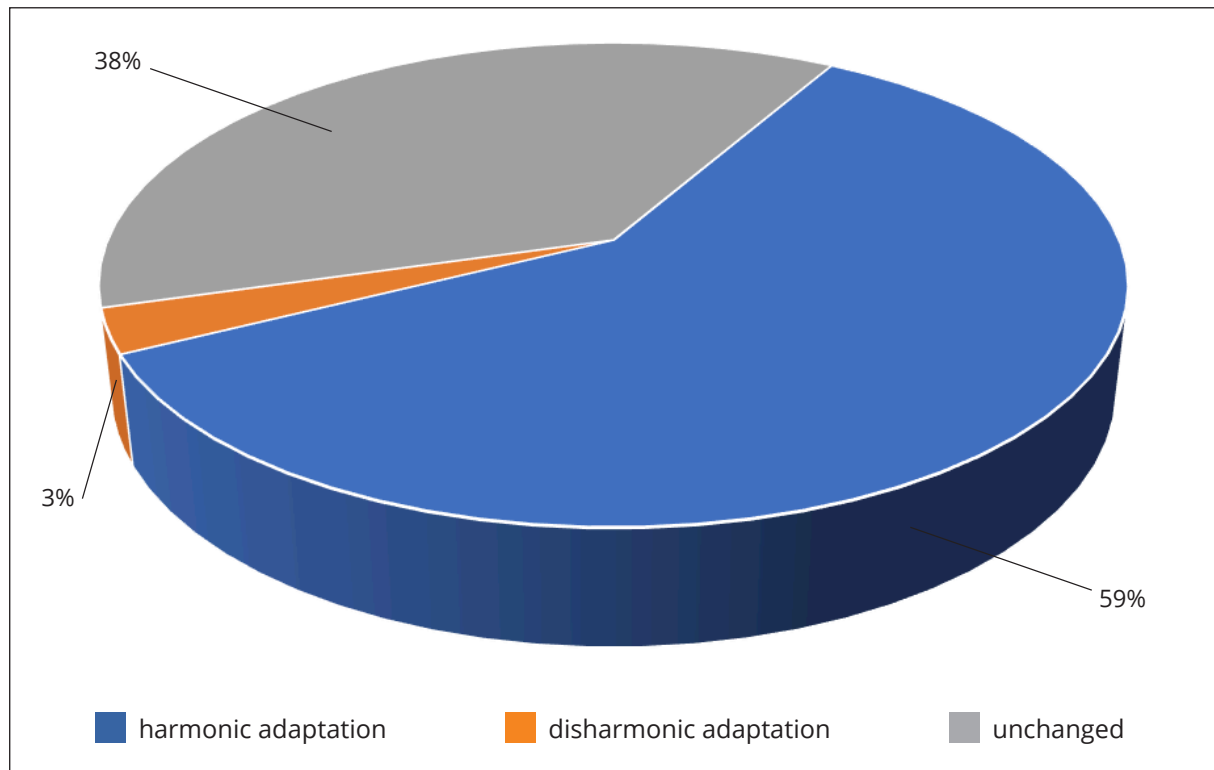
Bioactive zones

Secondary measurement (second measurement)

Bioactive zones



Final analysis (difference between primary and secondary measurement)



The bioactive zones of test person 4 reacted disharmoniously with a small percentage of 3. The measured mean value is 15 percent and the maximum and minimum values are also 15 percent.

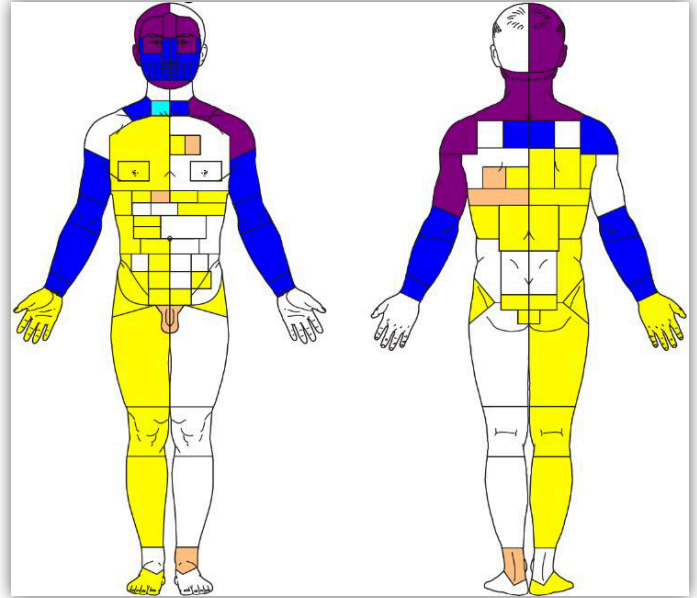
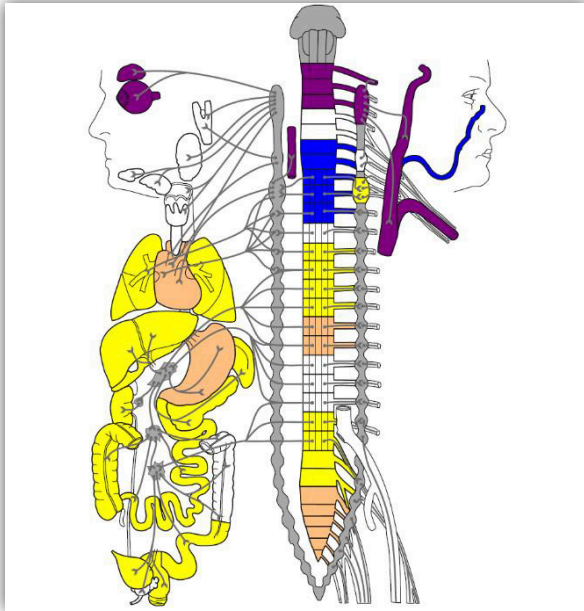
38 percent of the bioactive energy zones did not change.

Solid 59 percent of the bioenergetic areas reacted with a harmonic adaptation, whereby the mean value in this adaptation area is 41 percent. The maximum value is shown as 77, the minimum value as 14 percent.



Test person 5

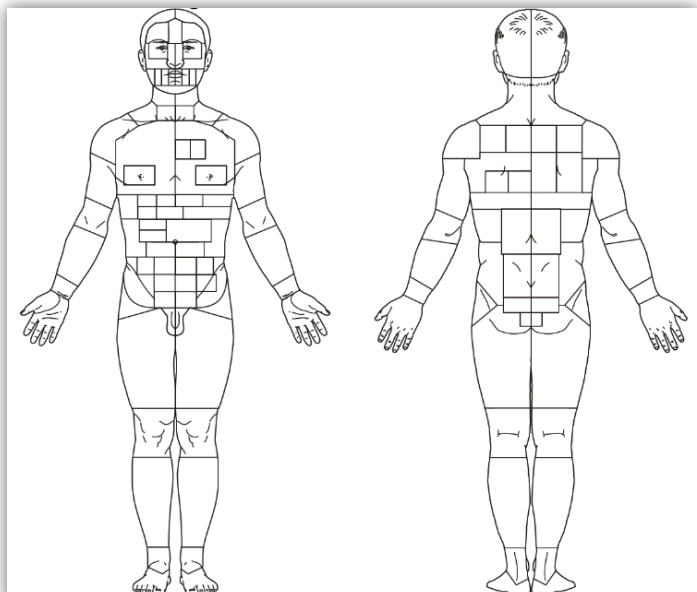
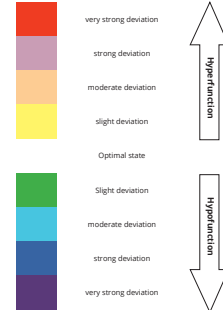
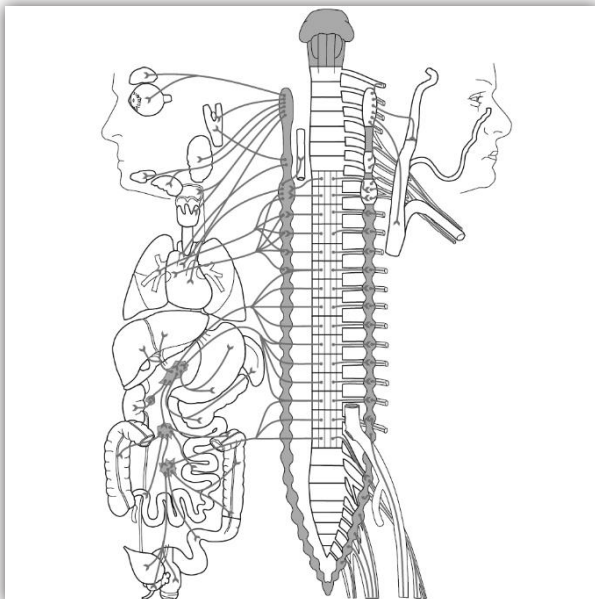
Primary measurement (first measurement)



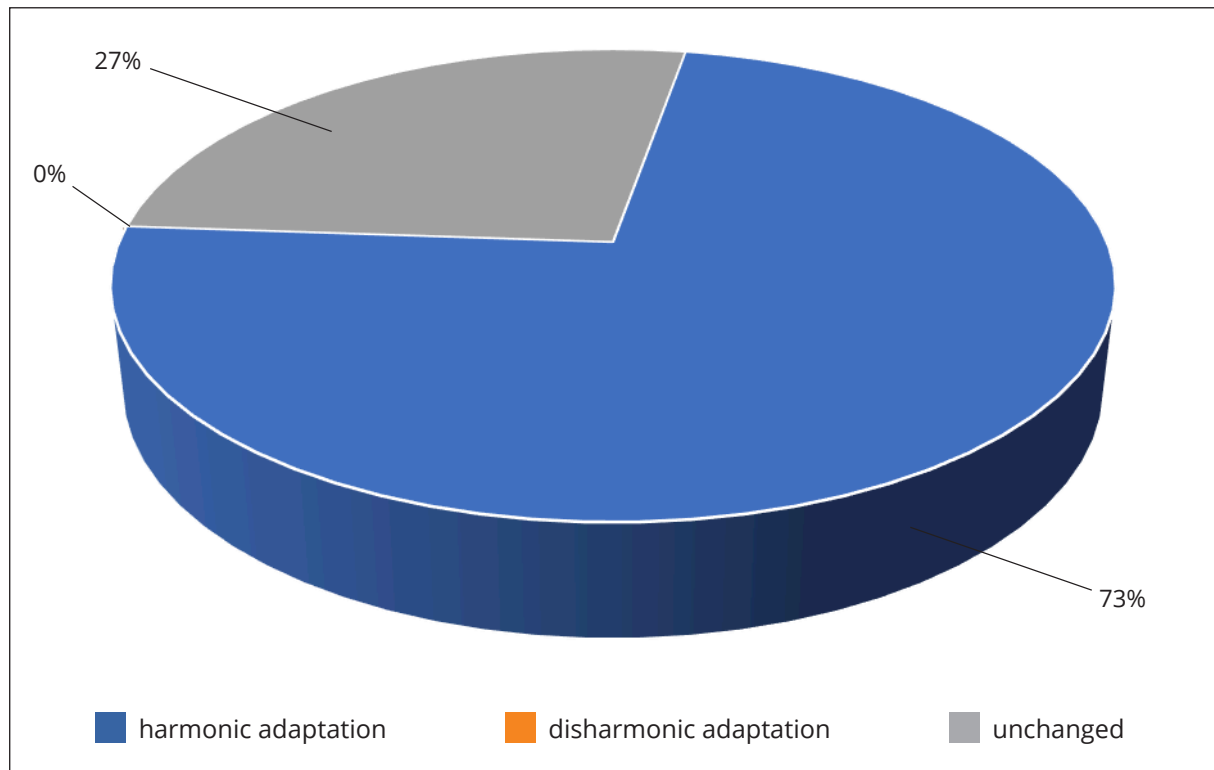
Bioactive zones

Secondary measurement (second measurement)

Bioactive zones



Final analysis (difference between primary and secondary measurement)



Test person 5 shows an astonishing result:

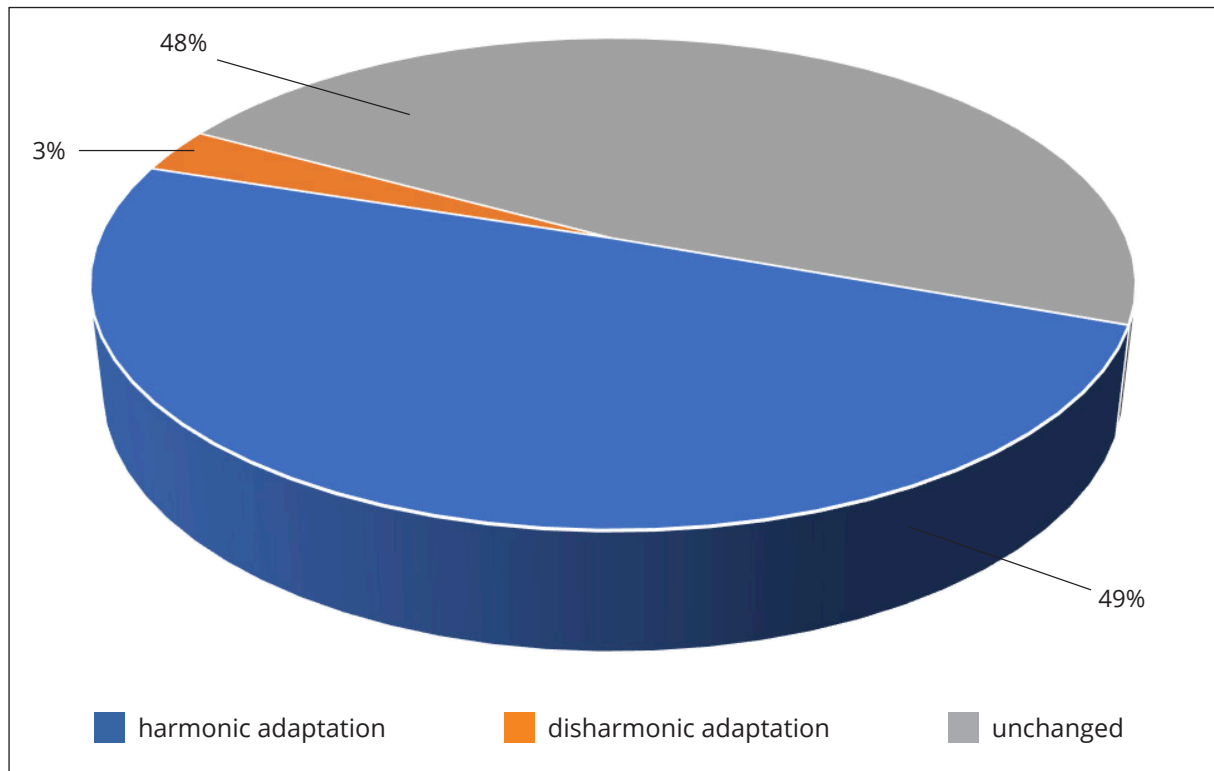
While no bioactive zone has made a disharmonious adaptation, 73 percent of the energetic areas have adapted harmoniously. With a mean value of 46 percent, a maximum value of 86 percent and a minimum value of 24 percent, this is a very good result.

27 percent of the bioactive zones of the body remained unchanged.



Conclusion of the BeMA.Bioscan test series *Sternenlotos STARGATE*

a) Allocation of harmonic and disharmonic adaptation



If we look at **all test persons and all values**, it is noticeable that 49 percent of the bioactive zones show a harmonisation in the energy range, i.e. that between the first measurement (before the treatment with the *Sternenlotos STARGATE*) and the second measurement (after the treatment with the *Sternenlotos STARGATE*) changes towards the energy optimum could be detected.

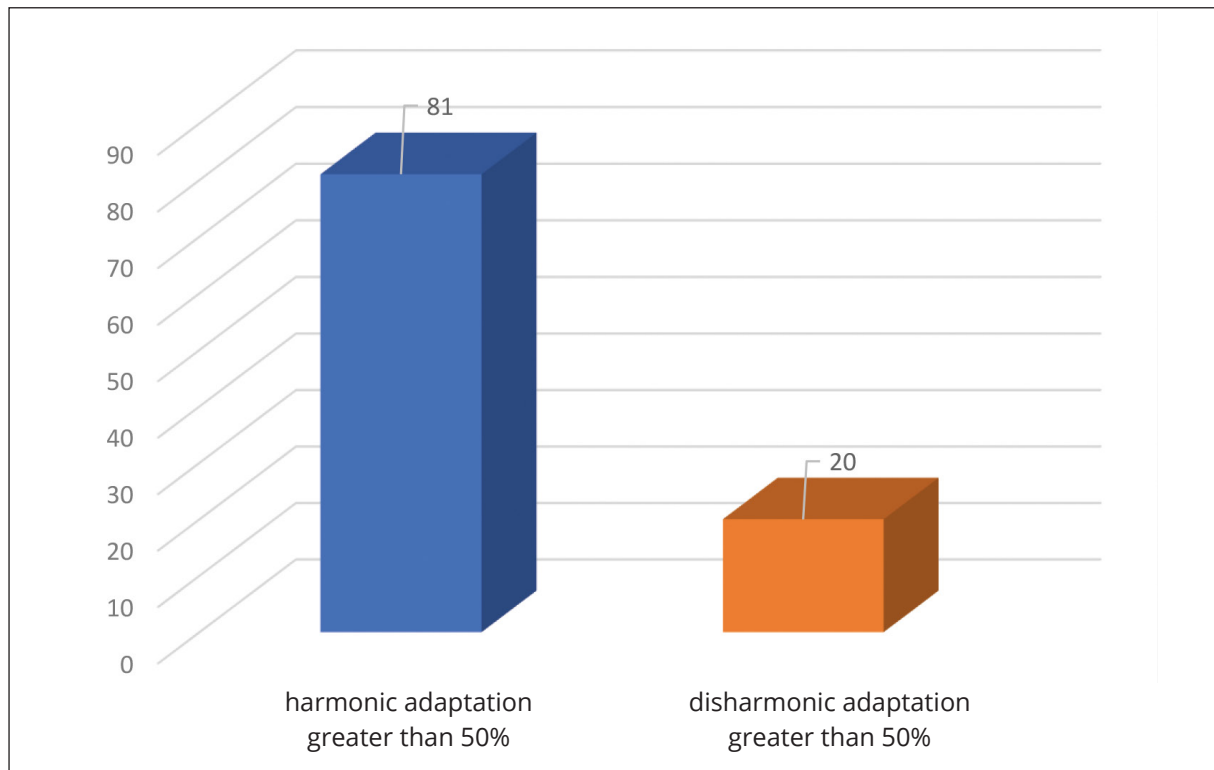
48 percent of the bioactive zones of all test subjects experienced no change between the first and second measurement.

Only 3 percent of all test persons and values show a disharmonic adaptation, which can be attributed to a conceivable initial worsening (see. page 5 and 8).

The measurement results show a clearly positive picture of the tested product ***Sternenlotos STARGATE***.



b) Diagram „Harmonic/ disharmonic adaptation more than 50 percent



The bar chart shows that **81 bioactive zones** of the 5 test persons experienced a **harmonic adaptation** of more than 50 percent. This means that the energy in 81 body areas has developed by more than 50 percent towards the optimal

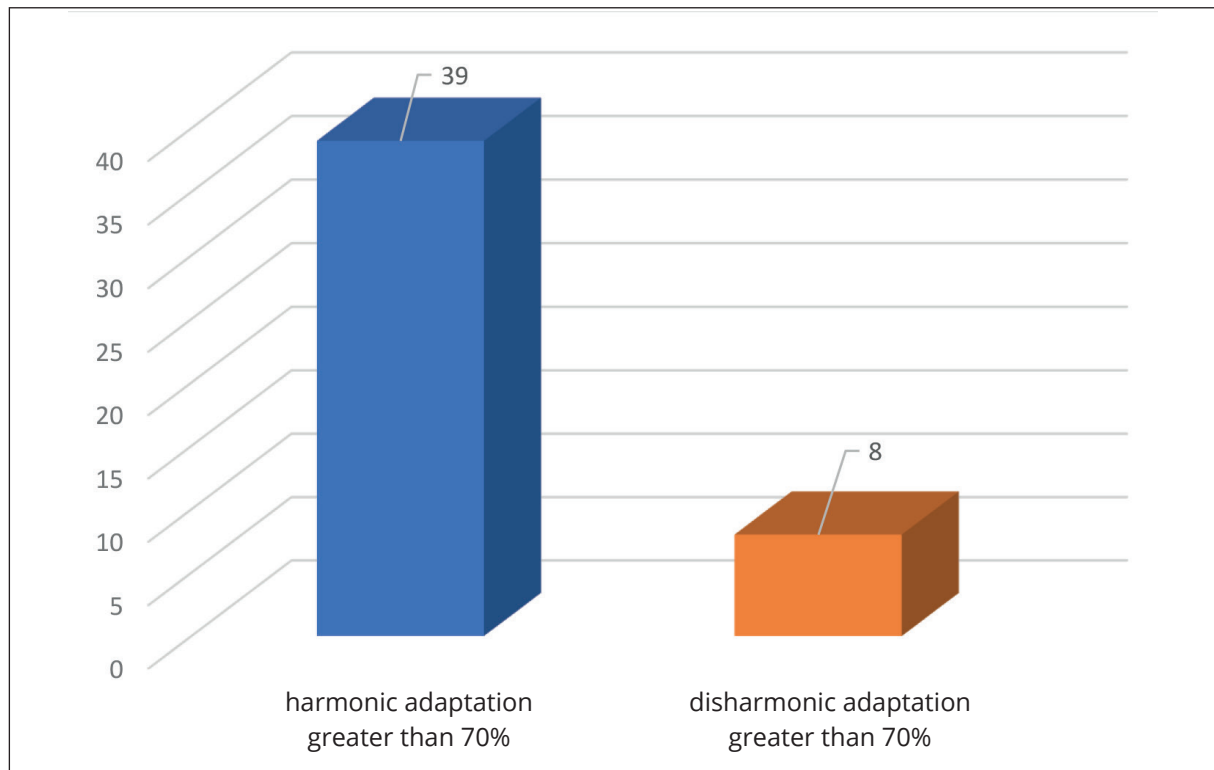
energy level. With 5 test persons, this would be 12% of all measured body zones.

In comparison: Only **20 bioactive zones** of all test persons showed a **disharmonious adjustment** with more than 50 percent, i.e. just under 3 percent.

The diagram suggests that the tested product has a clear effectiveness.



c) Diagram „Harmonic/ disharmonic adaptation over 70 percent“



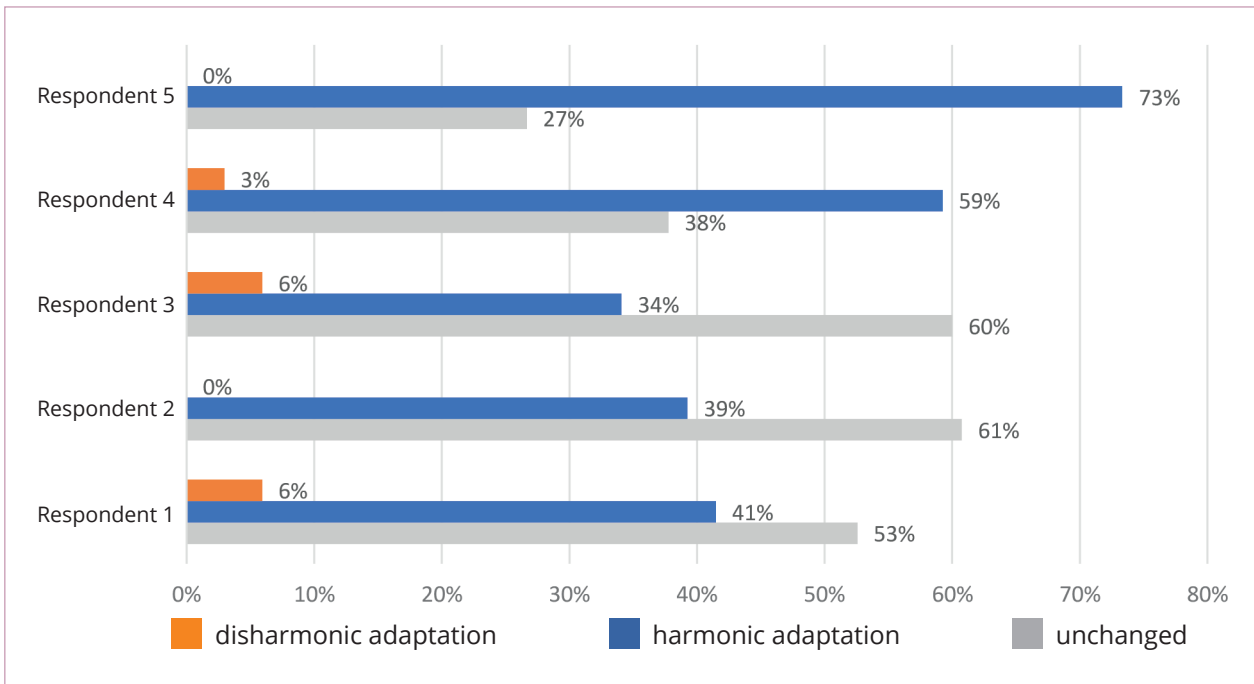
If one examines the adaptation of the bioactive zones in the body of the 5 test persons which shows a value of over 70 percent, the following picture emerges:

- such a high level of **harmonisation** could be achieved in a total of **39 zones**,
- in **only 8 zones** did the measurements show an equally high **disharmonic deviation**.

Again, the analysis speaks for the product across all values and test persons.



c) Diagram „Adaptation per test person“ (graph)



The diagram offers an overall representation of all tested subjects in their harmonic and disharmonic adaptation after treatment with (experiencing) the ***Sternenlotos STARGATE***.

In the case of **two test subjects (40 percent of the test series)**, in addition to unchanged bioactive zones, only harmonisations can be read, of which one subject shows a remarkable 73 percent. For three test persons, the harmonic adaptations are in the range of **40 percent and more**. That is **60 percent** of the total test subjects. All five test persons (**100 percent of the test series**) achieve harmonisation values of over 30 percent.



Overall conclusion of the test series

The IMEDIS measurements show a clearly positive test result in the use of the ***Sternenlotos STARGATE***.

The device to be tested by the company **BLOOMING LIFE** resulted in an energetic improvement of the bioactive zones in all five test persons. The measured values of the **harmonic adaptation** of the energetic bioactive zones are high and **all test persons** reacted with improvements in more than one third of their energy zones.

Disharmonic adaptations are - as mentioned at the beginning - most likely due to an initial reaction of the body in certain bioenergetic areas. Experience shows that the body readjusts the disharmonious zones towards the normal range of the energetic level after a short time.

BeMA.Bioscan can complete the test series on the product ***Sternenlotos STARGATE*** with a **clearly positive assessment**. The ***Sternenlotos STARGATE*** shows that it is able to bring about an immediate, clear energy change towards an optimum in the human energy system.



Appendix

The following table shows a list of the measurement areas of all test persons. The harmonic adaptations per measurement area are shown: The column number shows the frequency of positive changes, the column mean value provides the average value of the change. Of particular interest are those areas where the mean value and the number of test persons have high values at the same time.

Measuring ranges	Mean value	Number
1 and 2 tooth - left (as a whole)	78 %	2
2 and 1 tooth - right (as a whole)	33%	5
3 and 4 tooth - left (as a whole)	78%	2
4 and 3 tooth - right (as a whole)	33%	5
5 and 6 tooth - left (as a whole)	78%	2
6 and 5 tooth - right (as a whole)	33%	5
7 and 8 tooth - left (as a whole)	78%	2
8 and 7 Tooth - right (as a whole)	33%	5
Appendix	41%	2
Elbow joint - left posterior	78%	2
Elbow joint - right posterior	33%	5
Elbow joint - left anterior	78%	2
Elbow joint - right anterior	33%	5
Finger - left posterior	53%	1
Finger - left anterior	53%	1
Finger - right posterior	41%	3
Finger - right anterior	41%	3
Gall bladder and bile ducts - upper anterior	26%	1
Gall bladder and bile ducts - lower anterior	39%	2
Cervical spine - left posterior	51%	3
Cervical spine - right posterior	51%	3
Urinary bladder - left above anterior zone	27%	1
Urinary bladder - left below anterior zone	27%	1
Urinary bladder - right above anterior zone	23%	2
Urinary bladder - right below anterior zone	23%	2
H-B-U Spine, lung apex- left posterior	75%	2
H-B-U Spine, lung apex- right posterior	33%	5
Hip - left anterior	27%	1
Hip - right anterior	23%	2
Hip nerve - left posterior	46%	1
Hip nerve - right posterior	44%	2
Hypophysis	59%	4
Sacrum, anus	44%	3
Liver - left anterior	34%	3



Liver - right anterior	34%	3
Liver, stomach - small curvature	38%	3
Liver,gall bladder,bile ducts-rear part	29%	3
Lumbar-cruciate spine left posterior	44%	3
Lumbar-cruciate spine right posterior	44%	3
Li., anterior segment of large & small intestine-left z.	36%	4
Li., anterior segment of large & small intestine-right z.	36%	4
Li., section of large and small intestine - posterior	36%	4
Li.,colon&duodenum-below anterior	36%	4
Li.ovary&uterus(female)/prost.&testis (male)	36%	4
Li.lung apex,lower left lung lobe	21%	1
Left maxillary sinus	78%	2
Left mammary gland	21%	1
Left kidney - posterior part	39%	1
Left ureter - posterior zone	39%	1
Left section of heart	43%	4
Left nasal passage	78%	2
Left thyroid lobe	39%	5
Left posterior segment of heart	43%	4
Left eye, left ear	58%	4
Left hip joint - posterior segment	39%	1
Left hip joint - anterior	39%	1
Left knee joint - posterior part	27%	1
Left knee joint - anterior	27%	1
Stomach - large curvature, anterior part	42%	2
Stomach, pancreas, spleen - posterior part	38%	3
Spleen - anterior part	42%	2
Middle and lower left lobe of the lung - posterior part	20%	3
Middle zone right lung lobe - posterior	20%	3
Middle third of arm - left anterior	78%	2
Middle third of arm - right anterior	33%	5
Upper third of arm - left posterior	58%	4
Upper third of arm - left anterior	58%	4
Upper ankle joint - left posterior	41%	2
Upper ankle joint - right posterior	46%	1
Upper ankle joint - left anterior	41%	2
Upper ankle joint - right anterior	46%	1
Pancreas - anterior zone	42%	2
Prostatic lobe(Maen.),urinary bladder-left anterior	39%	1
Prostatic lobe(Maen.),urinary bladder-right.anterior	41%	2
Proximal wrist joint - left posterior	78%	2
Proximal wrist joint - right posterior	33%	5
Proximal wrist joint - left anterior	78%	2
Proximal wrist joint - right anterior	33%	5
Right anterior colon & duodenum-left.z.	41%	2
Right anterior colon & duodenal section-right.z.	41%	2



Right section of colon and duodenum - posterior	41%	2
Re.colon & duodenum section - anterior bottom	41%	2
Right ovary & uterus(female)/prost. & testis(male)	27%	2
Right lung apex,lower right lung lobe	17%	3
Right maxillary sinus	33%	5
Right mammary gland	20%	3
Right kidney - posterior part	41%	2
Right ureter - posterior zone	41%	2
Right section of heart	44%	4
Right nasal passage	33%	5
Right thyroid lobe	28%	4
Right zone right lung lobe - posterior	20%	3
Right posterior cardiac segment	44%	4
Right eye, right ear	54%	4
Right hip joint - posterior segment	41%	2
Right hip joint - anterior	41%	2
Right knee joint - posterior part	23%	2
Right knee joint - anterior	23%	2
Vagina/Uretra, Penis/Uretra - left	42%	3
Vagina/Uretra, Penis/Uretra - right	42%	3
Vertex and occiput - left	31%	1
Top and back of the head - right	62%	2
Shoulder joint - left posterior	58%	4
Shoulder joint - right posterior	33%	5
Shoulder joint - left anterior	58%	4
Shoulder joint - right anterior	33%	5
Sigma	39%	1
Forehead - left	31%	1
Forehead - right	62%	2
Forearm - left posterior	78%	2
Forearm - left anterior	78%	2
Forearm - right posterior	33%	5
Forearm - right anterior	33%	5
Lower left lobe of lung - posterior	21%	1
Lower jaw	59%	4
Lower leg - left anterior	27%	1
Lower leg - right anterior	23%	2
Anterior segment of the duodenum	27%	2
Toe joints - left posterior	46%	1
Toe joints - left anterior	46%	1
Toe joints - right posterior	44%	2
Toe joints - right anterior	44%	2
CNS, left frontal sinus	51%	3
CNS, right frontal sinus	51%	3
Twin calf muscle - left posterior	27%	1
Twin calf muscle - right posterior	23%	2



Upper arm third - right posterior	15%	1
Upper third of arm - right anterior	15%	1
Right lung tip	15%	1
Hip nerve - left posterior	6%	1
Toe joints - left posterior	6%	1
Toe joints - left anterior	6%	1