

542SSTS

Installation instructions

Please be sure to read this before use and installation.

•This product is a fix kit for transplanting the genuine steering switch when replacing the steering wheel. Any use other than the above is prohibited.

Please don't.

•This product is designed to be compatible with our normal boss. Not compatible with short boss. •In the event of damage

to the vehicle, injury, or accident due to incorrect installation or handling, and parts during installation.

Please note that we are not responsible for any damage or injury.

•Since the steering wheel falls under the category of important safety parts, it should be purchased at a car shop or dealer who has the appropriate knowledge and skills.

Please add it.

- In the event of a strong impact such as an accident, there is a risk of injury to the driver due to this product. Please handle with care.

Contents

• Base x 1 • Wing

LH x 1 • Wing RH x 1 •

Grommet bush x 2 • Sara

CAP bolt M5 x 10 x 4 • CAP bolt

M3 x 14 x 4 • Steering mounting screw set

Sara CAP bolt M5x20 x6

Hex bolt M5x20x6

• Boss cover x1 •

Conversion harness x1



Installation instructions

1. Remove the left and right switches and wiring from the genuine steering wheel.

Please follow the maintenance manual when removing genuine parts.

2. Assemble the genuine switch harness to the boss cover •.

Pass the 8-pole coupler through the small hole in the cover and the 6-pole coupler through the large hole in the cover from the inside. *If it is difficult to pass the coupler through, please deform the top of the cover.



3. Attach the boss cover to the boss body and at the same time attach the genuine harness 12-pole coupler.

Connect to the spiral cable and pull the horn + wire inside the boss. Install the boss cover with the small hole facing 9 o'clock and the large hole facing 3 o'clock. The auto cruise harness should be placed between the boss body and the cover, or inside the boss.

Please store it.

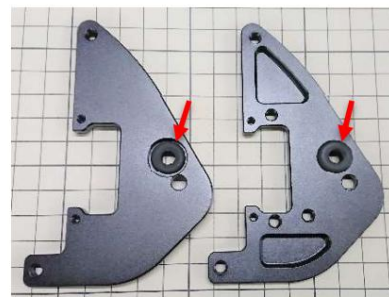
If the boss cover interferes with vehicle side parts, cut it with scissors etc.

please.



4. Install the grommet bushes to the wings RH and LH.

Make sure that both the front and back sides are firmly attached.

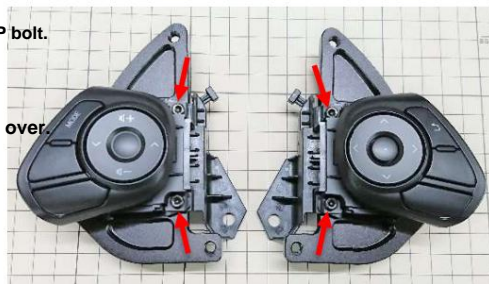


5. Insert the thick pin on the back of the switch into the grommet bush, and then tighten the CAP bolt.

Secure the switch and wing with M3x14.

*When inserting the pin, do so slowly to prevent the grommet bushing from turning over.

Please sink in.



6. Temporarily tighten the Base and Wing with Sara CAP bolt M5x10.



7. Connect the switch harness and switch on each side.

8. Connect the conversion harness to the genuine horn harness + wire.



9. Determine the position of the wing according to the installed steering wheel, and further tighten the 4 M5 x 10 Sara CAP bolts that were temporarily tightened in step 6.

10. Stack them in the following order: boss - base - horn ring (Note 1) - steering wheel, and tighten together with M5x20. (See attached development diagram)

Depending on the shape of the installed steering wheel, use either Sara CAP bolts or hex bolts.

Note 1

When using a MOMO size horn button, use a horn ring.

Do not use a horn ring when using a NARDI size horn button.

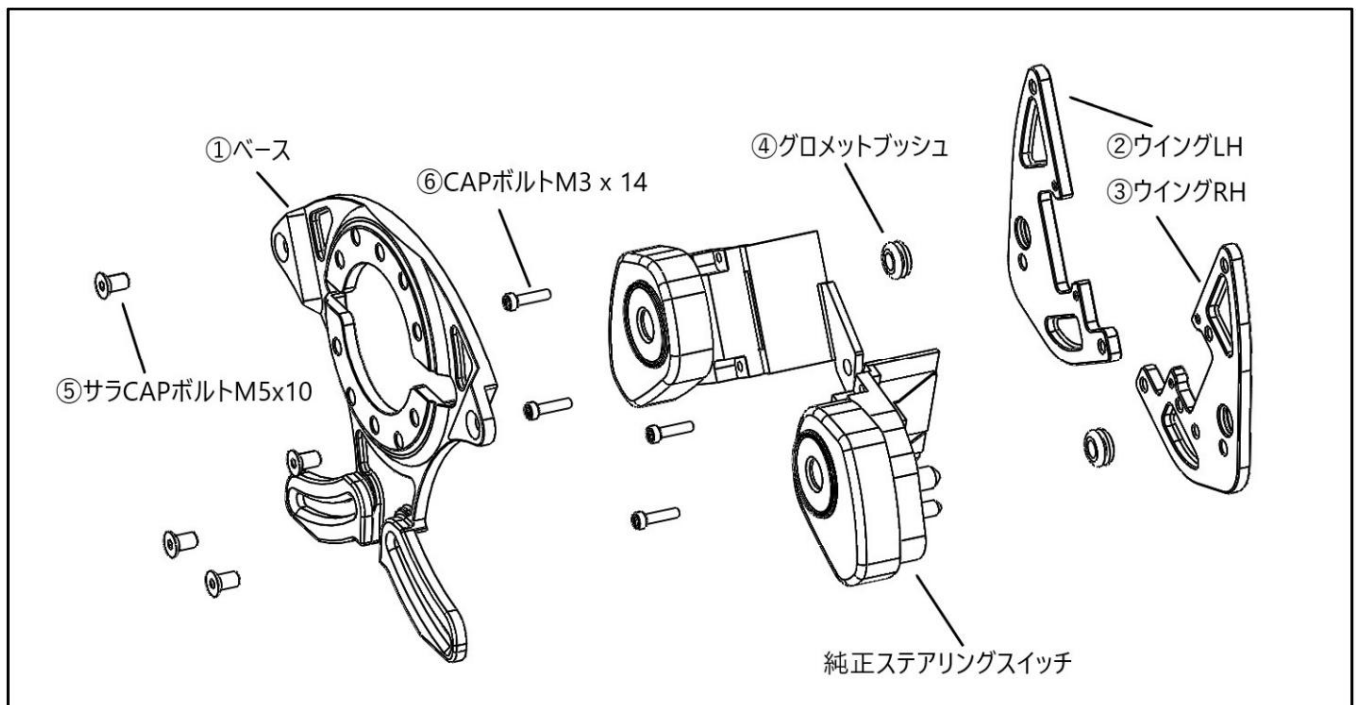
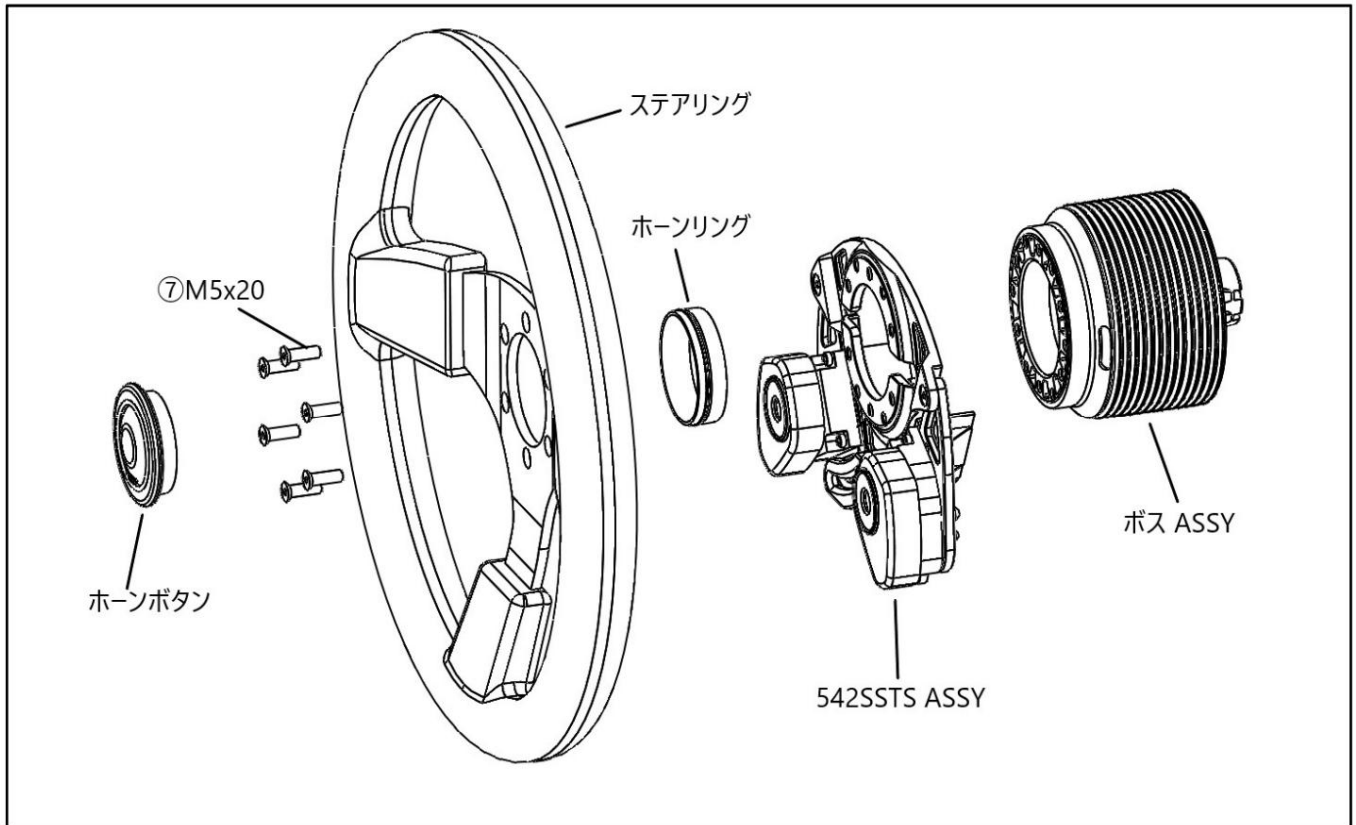
Please use the horn ring that comes with the boss.

11. Connect the conversion harness to the horn button and install the horn button.

12. The work is completed after checking the operation of each function.



Developed view



Works Bell Co., Ltd. 8507 Tamagawa, Chino City, Nagano
Prefecture 391-0011 TEL: 0266-79-3761 FAX:

Email: support@worksbell.co.jp

0266-79-4706 URL: [//www.worksbell.co.jp](http://www.worksbell.co.jp)