

SRD for BMW A2 M4 (F82) MT

Thank you very much for purchasing our product.

Please be sure to read this manual and understand its contents before use.

Contents of this manual

A. Purpose of use/Overview

The purpose of use and overview of the product are described. Please be sure to read this information if you are using the vehicle in which it is installed.

B. Contents

All products, accessories, and contents are listed. Please be sure to read this before installation work.

C. Installation instructions

This section describes how to install the product. Please be sure to read this manual if you are performing installation work.

D. Precautions

This section contains notes regarding the contents of the product and instruction manual. Be sure to read this manual for users of the vehicle to which it will be installed and those who will be installing

Sai.

A. Purpose of use/Overview

•To relocate the genuine steering switch of BMW M4 (F82) MT to our steering boss and change to sports steering.

This is a product of Please do not use it for any other purpose.

- Lane departure function will no longer be available. - Only

for right-hand drive cars officially sold in Japan. Installation has not been confirmed for parallel imported cars and left-hand drive cars. -

Cannot be installed on vehicles other than those with compatible steering

switch shapes. - It cannot be installed on other companies' products or

imitations of our products. •This product uses a MOMO or NARDI three-spoke steering wheel with a diameter of 350mm and a total height of 40mm.

Designed. Sports type steering wheel with a diameter of 350mm or less, steering wheel with too much or too small overall height, 3

We have not verified the use of steering wheels other than spokes or MOMO or NARDI PCD.

- The instructions for removing genuine parts are excerpted. Please contact the vehicle manufacturer or dealer for details. - This

manual was created for a 2015 model year vehicle. There may be items or photos that differ from the description depending on the model year or grade.

note that.

B. Contents



Boss body



Switch mount



Cover



Air back canceller low head bolt M6x12



Low head bolt M6x10 + Knife head M3x8



Horn ring



Steering mounting bolt

(Already installed in the boss body) (Already installed in the boss body) (Already installed in the boss body)

C. Installation instructions

Note: Stop the vehicle with the steering wheel running straight, disconnect the battery terminals, and wait about 15 minutes before starting work.

Please contact the car manufacturer in advance for information on how to reset the battery by disconnecting the battery terminals.

1. Push the spring through the holes on the left and right sides of the genuine steering wheel (diagram ȳ) to unlock the airbag module, and then remove the spring.

Remove the coupler from the cable and remove the airbag module.



2. Remove the coupler connected to the spiral cable, remove the center bolt, and remove the genuine steering wheel. Tapping screw (black) at 6 o'clock direction on the back side of the bezel (diagram ȳ) and tapping screws on the front side at 3 o'clock and 9 o'clock directions - (silver) and remove the bezel.



3. Remove the wiring and steering switch from the genuine steering wheel.

***Lane departure vibration generator and its unit are used.**

I don't.



4. Place the genuine switch on the switch mount and insert the genuine tapping screw from the back side.

(black). The right side will be removed later, so temporarily tighten the tapping screw.

Please keep it.

***Be careful not to overtighten as the other party is made of resin.**



5. Attach the switch mount to the boss using the included low head bolt M6x12.

(Figure

ÿ) Tightening torque 2.0 to 2.5 N•m (0.2 to 0.25 kgf•m) *Be

careful not to overtighten! If you tighten it too much, the resin will be crushed and damaged.

The three M6x10 low-head bolts assembled into the boss body are tightened to the specified torque.

vinegar. When removed, tighten to the specified tightening torque.

Tightening torque 5.2 to 7.2N•m (0.5 to 0.7kgf•m)



6. Remove the temporarily fixed right steering switch and connect the genuine wiring coupler.

Use the oval hole on the side of the boss to pass it from the inside of the boss to the outside and connect it to the steering switch.

Continue.

After connecting the coupler, turn the steering switch using the genuine tapping screw (black).

Attach the book to the touch mount.

*Be careful not to overtighten as the other party is made of resin.

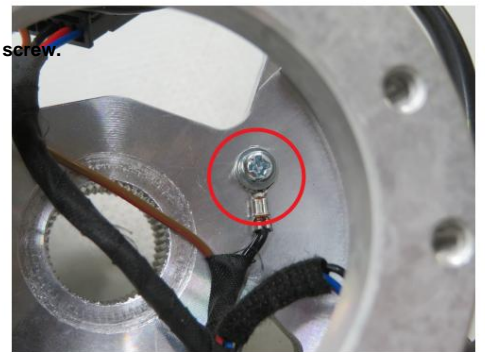


7, Put on the boss cover.



8, Attach the ground of the genuine wiring to the bottom of the boss using the included + pan head M3x8 screw.

To do. (Figure ÿ)



9. Wrap insulating tape around the horn + flat terminal.



10, Connect the included airbag canceller to the spiral cable.

Install it with the wire coming out on the left side as shown in the diagram on the right.



11, Connect the genuine wiring to the spiral cable, and align the top position of the boss with the shaft, and insert it. Place the wiring inside the boss.

Note: After degreasing the shaft taper and serrations with a parts cleaner, etc.

Please insert the boss.



12, Attach the steering wheel to the boss using the supplied bolt (or the bolt that comes with the steering wheel) and tighten the center nut to the specified torque of 62N•m (6.2kgf•m).

*When installing a MOMO type horn button, attach the included horn ring to the inner diameter of the boss.

Please fit it into place and then install the steering wheel.

Do not use a horn ring when installing a NARDI type horn button.

yeah.



13, Connect the genuine horn wiring and horn button and attach it to the steering wheel.



14, Connect the battery terminals.

If you need to reset the settings, please follow the instructions specified by the manufacturer.

*An error will appear when you press the lane departure button, but it will disappear automatically when you restart the engine.

In rare cases, an auto cruise failure and error may occur when the engine is started, but it will automatically recover immediately and the auto cruise function will continue.

We have confirmed that it works.

D. Precautions

- After installation is complete, operate the steering wheel and check for any abnormalities. Correct wiring was not done, and the vehicle side

Steering operation may become difficult if the spiral cable is pushed by wiring. Also, drive in that condition. _____

If you continue, vehicle parts may be damaged. be careful.

•Before operating the vehicle, be sure to confirm that each installed part is secured. If looseness occurs during operation, steering will occur.

This is extremely dangerous as you will not be able to operate the ring.

- Please do not modify or use this product. • Please

carefully store the removed genuine steering wheel and parts. When returning to the original state for some reason

You will need. Our company cannot be held responsible for this.

- Our products are carefully inspected and shipped after confirming that there are no defects. However, if there is a quality problem, please contact us.

Please contact us. At this time, you may have to send the product to us once. The above genuine parts are required.

If you do not do the work yourself, you can expect to incur labor charges, but we do not charge genuine parts and labor charges.

Please note that we cannot guarantee the warranty.

- Please keep this manual together with this product.

Works Bell Co., Ltd.

8507 Tamagawa, Chino City, Nagano Prefecture 391-0011

Contact: Works Bell Customer Center

TEL: 0266-70-1477 (Weekdays 10:00-18:00)

E- mailysupport@worksbell.co.jp