

# PRODUCT MANUAL

## Aroma diffuser



Scent marketing

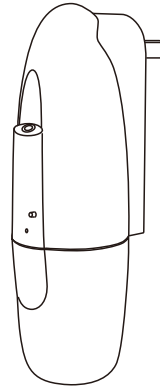


Android system



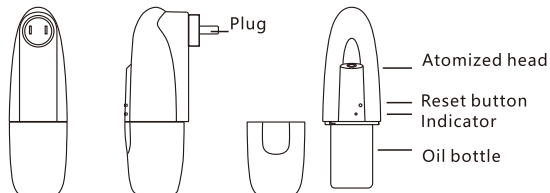
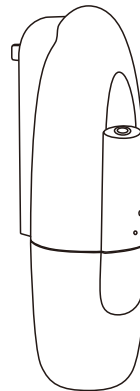
IOS system

If the QR code cannot be scanned, please search for "ScentMarketing" in Google play or APP store.



### 01 Specification

- [ Model ] AE 103
- [ Size ] 122\*65\*214mm
- [ Bottle ] 100ml
- [ Input ] DC5V == 0.3A MAX
- [ Power ] 2W
- [ Coverage ] 25m<sup>2</sup>/75m<sup>3</sup>/2650ft<sup>3</sup>
- [ N.W. ] 0.3kg
- [ Material ] Plastic



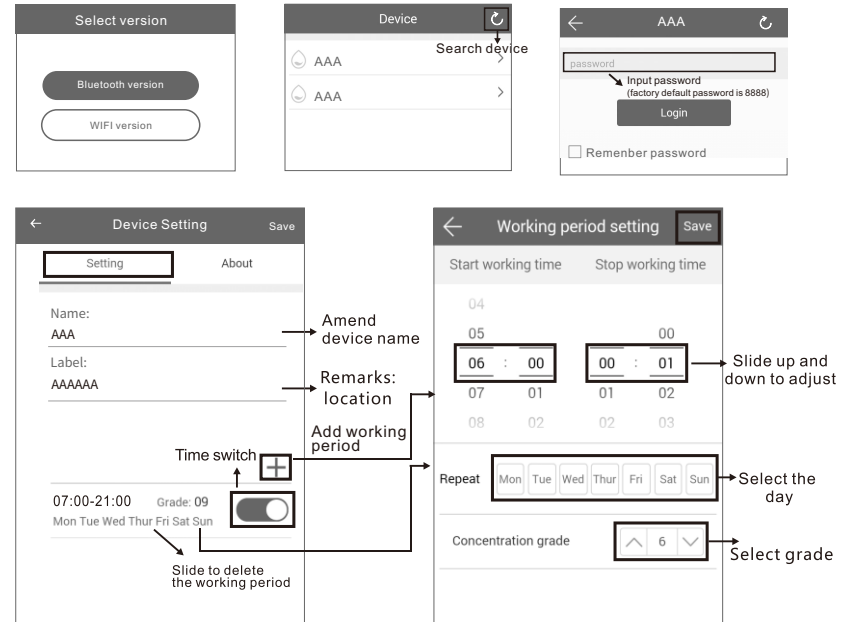
### 02 Bluetooth instruction

#### Where to get the app:

Please search "scent marketing" in Google play or App store .

#### Note:

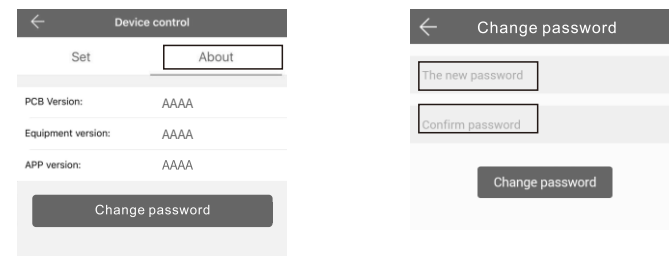
1. Please make sure that the Bluetooth function is turned on;
2. Please make sure that the location function of the mobile phone is turned on.



(PS: There are 5 working periods available to be set.)

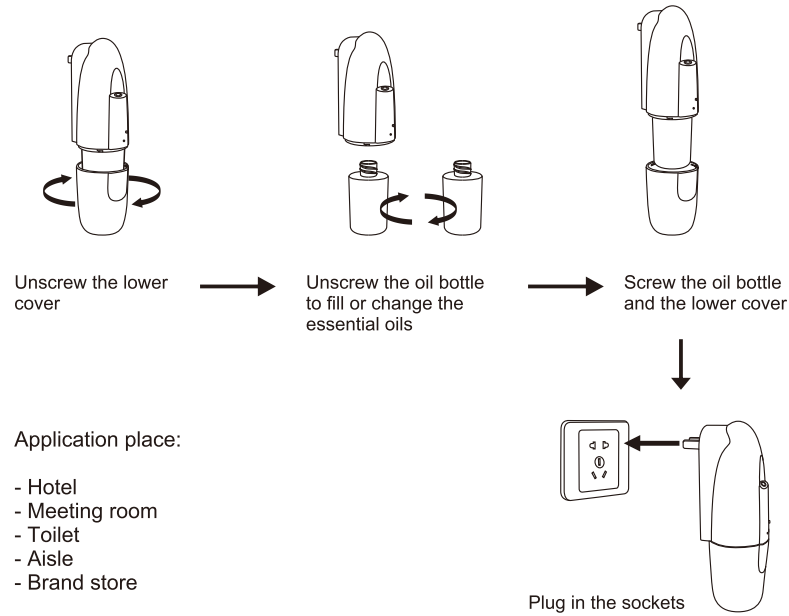
After adjusting grade, please save it BEFORE going back to the homepage.

#### Amend password



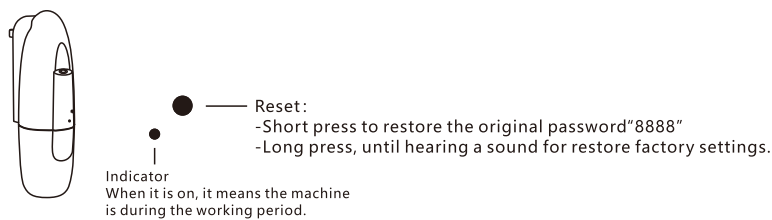
If you forget the password, please press the reset button to restore the factory setting. The factory settings password is 8888.

### 03 Installation method



### 04 Operating instructions

APP version: Controlled by APP, more convenient and intelligent



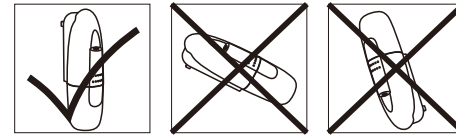
### 05 Concentration and consumption

Grades	Work time(s)	Stop time(s)	Consumption(g/h)
G1	15s	285s	0.07
G2	15s	135s	0.15
G3	15s	85s	0.23
G4	15s	60s	0.30
Customized	3-15s	60-900S	—

Notes: 1.The working time above of each grade is 15s.  
2.Different grade and oil may be with different consumption.

### 06 ⚠Warning

1. Please keep the machine vertical. Tilt or lie flatly may cause the oil overflow. The efficiency of the machine may be affected.
2. Shall not modify, disassemble or repair the machine. If any failure happens to the machine, please contact our technical personnel.



### 07 Troubleshooting

Before having the machine repaired, please try to diagnose the problem first with the bellow instructions

Symptom	Remedy
Does not diffuse	- Whether the machine is in "not working period" . If yes, it won't spray. - Check whether the air pump is damaged. If yes, replace it with a new one.
Spray little	- Check whether the gasket is damaged or loose. Please adjust it or replace it with a new one. - Check whether the atomized core is plugged; clear it with alcohol or replace it with a new one
Oil spill	- Check whether the atomized head is damaged
Oil overflow	- Check whether the oil bottle is loose, please install it correctly - Check whether the gasket of the atomized head is damaged; if yes, please replace it with another one. - Please keep the machine vertical; Tilt or lie flatly will cause the oil overflow

### 08 Equipment cleaning

The machine need to be cleaned when below situation happens:

1. You're about to change another kind of essential oils
2. The atomization volume goes weak

Cleaning steps:

1. Unscrew the lower cover and take out the oil bottle
2. Find a larger container and fill the industrial alcohol up. Then soak the bottle for 5-10 minutes.
3. Airing the bottle.