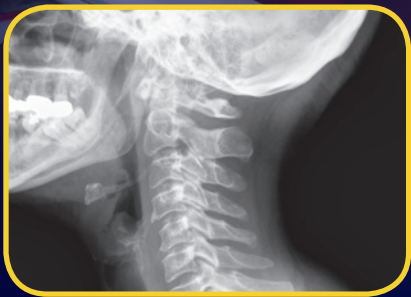


# CMDR2S-COMMERCIAL



The **CMDR2S-COM** is a complete portable digital radiography system featuring a Toshiba DR Cesium Imaging Panel integrated with a MinXray **HF120/60H PowerPlus™** or **HF100H+** portable x-ray unit. The system easily moves on its two-wheel cart. The Toshiba panel slips out of its protective sleeve and the system sets up in less than one minute. The **CMDR2S-COM** provides the following features:

- Rugged construction yet light and compact
- Easily transportable between sites
- Set up in less than 1 minute
- Image acquisition in less than 10 seconds
- Superior resolution

**MINXRAY<sup>®</sup>** INC.

Where you care, we're there.

# CMDR2S-COMMERCIAL

## MINXRAY HF120/60H POWERPLUS™

X-RAY OUTPUT 60-40 mA @ 40-120 kVDC, 0.6 - 212 mA

INPUT LINE VOLTAGE 100 - 260 VAC; 50-60 Hz

TOTAL FILTRATION WITH COLLIMATOR 3.2 mm Al Equivalent

LED COLLIMATOR CPL-125-MX01-C

## MINXRAY HF100H+

X-RAY OUTPUT 30 mA @ 40-60 kVDC, 25 mA @ 62-80 kVDC, 20 mA @ 82-100 kVDC

INPUT LINE VOLTAGE 100 - 140 VAC or 200 - 260 VAC

TOTAL FILTRATION WITH COLLIMATOR 3.8 mm Al Equivalent

COLLIMATOR CPL-125-MX01-C

## TOSHIBA PORTABLE X-RAY FLAT PANEL DETECTOR FDX3543RP

APPLICATION General radiology

SCINTILLATOR CsI: T1 (direct vapor deposition) + reflective coating

PIXEL PITCH 143 μm

PIXELS 2448 x 2984 (approx. 7.3 million pixels)

IMAGE SIZE 14 x 17 in (35 x 43 cm)

A/D CONVERSION 16 bit

OUTPUT DATA 16 bit grayscale tiff

PREVIEW IMAGE ACCESS TIME Approx. 4 seconds after x-ray exposure

MTF (2LP /MM) 36% typ

DQE (0) 70% typ

POWER (VOLTAGE /FREQUENCY) AC 100-240 V 50/60 Hz

OPERATION ENVIRONMENT Sensor Unit: 50-95° F (10-35° C), 10-85% RH (non-condensing)

DIMENSIONS Sensor Unit : 384 x 460 x 15 mm

WEIGHT Sensor Unit : 6.6 lb (3 kg)

STANDARD COMPONENTS Sensor Unit, Interface Box, Cables

CERTIFICATION IEC60601-1, IEC60601-1-2, MDD93/42/EEC (CE marking)



## Ordering Information

### The system includes:

- 1 ea. **HF120/60 PowerPlus™** or **HF100H+** High Frequency Portable X-Ray Unit
- 1 ea. Toshiba Digital Imaging Panel
- 1 ea. Laptop
- 1 ea. MinXray DXR Imaging Software
- 1 ea. Ruggedized Portable Mobile Stand
- 1 ea. Protected Grid Cap 6:1 ratio 103 lpi

System Net Weight: Approximately 147 lb (66 kg) assembled with x-ray

### Data Output and Network Connection

Ethernet: 10/100/1000 Base T, RJ 45 standard, wireless  
 Data Output: DICOM 3.0 compliant, Print Management Class (SCU), storage  
 Service Class (SCU) and others

### For more information about MinXray products, contact your local dealer or MinXray at:

**MinXray, Inc.**  
 3611 Commercial Avenue  
 Northbrook, Illinois 60062 USA  
 1-847-564-0323

**Toll Free:** 1-800-221-2245 (U.S. & CA.)  
**E-mail:** info@minxray.com  
**Web:** www.minxray.com

# MINXRAY<sup>®</sup> INC.

Where you care, we're there.

