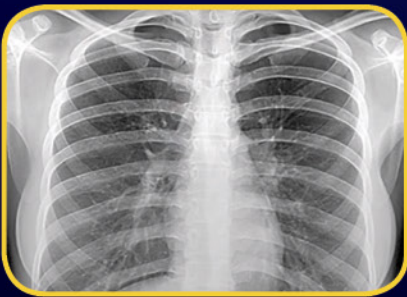


HF100H+



With full-wave rectified high frequency, the **HF100H+** is MinXray's most cost-effective units for medical imaging. The key feature for the **HF100H+** is the output of these units is independent of line voltage variations. Features that are included in the **HF100H+** include:

- CPU control of x-ray tube
- 5 memory stations for storing x-ray exposure techniques
- Automatic, dynamic line compensation
- Compact, lightweight
- Seamless integration with DR system is available

MINXRAY[®]
INC.

Where you care, we're there.

HF100H+



CONSTRUCTION	Monobloc HF generator, full bridge inverter
OUTPUT	30 mA @ 40-60 kVDC, 25 mA @ 62-80 kVDC, 20 mA @ 82-100 kVDC,
KVDC STEPS	2KV step
mAs	2.0 - 150
TIMER	Ultra High Resolution 0.03-4.0 sec, 0.01 increments
X-RAY TUBE	Toshiba D-124S
FOCAL SPOT	1.2 mm
ANODE HEAT STORAGE	20 kHU
TOTAL FILTRATION INCL. COLLIMATOR	3.2 mm Al equivalent
INVERTER FREQUENCY	60kHz
LINE VOLTAGE	AC Single Phase 100 - 140 V; 50/60 Hz
FUSE RATING	30 amp 125 kV
ELECTRICAL CONSUMPTION	20 amp at 125 kV
MAXIMUM CONSUMPTION	2 kW @ 100 kVDC, 20 amp
SYSTEM NET WEIGHT	45.5 lb (20kg)
TUBEHEAD DIMENSIONS	11.5 x 9.1 x 17.7 in (29.2 x 23 x 45 cm)
TUBEHEAD WEIGHT	44.5 lb (20.2 kg)
COLLIMATOR	Continuously adjustable light beam type with central x-ray indicator
POWER CORD	20 ft (6.1 m)
EXPOSURE CORD	8 ft (2.44 m)

Ordering Information

HF100H+ High Frequency Portable X-Ray Unit

Variable kVDC (40-100), variable mA (30,25,20), complete with ultra high-resolution timer, adjustable light beam collimator, 5 memory stations, power cord, exposure switch and cord and technique chart.

XGS MKIV LW

Gas Spring Portable Mobile Stand with 16 in wheels for **HF100H+**

For more information about MinXray products, contact your local dealer or MinXray at:

MinXray, Inc.
3611 Commercial Avenue
Northbrook, Illinois 60062 USA
1-847-564-0323

Toll Free: 1-800-221-2245 (U.S. & CA.)
E-mail: info@minxray.com
Web: www.minxray.com

MINXRAY[®] INC.

Where you care, we're there.

