

# POND KING PATRIOT

## Assembly Instructions

Thank you for purchasing the Pond King Patriot. You will need an area that's about 12' long by 5' wide to build your boat. All of the pieces are color coded and numbered to help you match them up and place in the correct spot.

**Step 1:** Break down the pallet and remove all of the pieces.

**Step 2:** Arrange the pontoons as the "4 corners" of your boat. Starting in the upper left and going clockwise, you'll have green (#1), purple (#2), blue (#3) and red (#4). See **FIGURE 1**.

**Step 3:** Lift the rail off the deck and set aside.

**Step 4:** Set the deck frame on top of the pontoons. The frame will sit in between the square tube and bracket on each pontoon. Each end of the deck should line up with the end of the brackets. The holes in the deck should line up with the holes in the brackets. See **FIGURE 2**.

*Using caution not to dent/damage your pontoons, you may need to take a lightweight rubber mallet and tap the weld of the pontoons to move them slightly to get them lined up.*

**Step 5:** Once you have your deck lined up, set the railing on top of your deck matching up the colored/numbered dots. The railing should be on the outside of the brackets. The holes in the railing frame should line up with the holes in the deck and brackets. See **FIGURE 3**.

### What's Included:

- (4) Pontoons
- Deck
- Railing
- (2) Seats w/ Posts & Mounts
- Transom

### Frame Hardware:

- (8) 3/8" x 3-1/2" Bolts
- (8) 3/8" Flat Washers
- (8) 3/8" Lock Washers
- (8) 3/8" Nuts

### Transom Hardware:

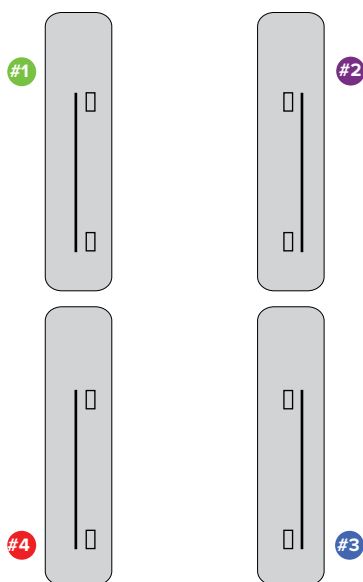
- (2) 3/8" x 4" Bolts
- (4) 3/8" Flat Washers
- (2) 3/8" Lock Washers
- (2) 3/8" Nuts

### Seat Hardware:

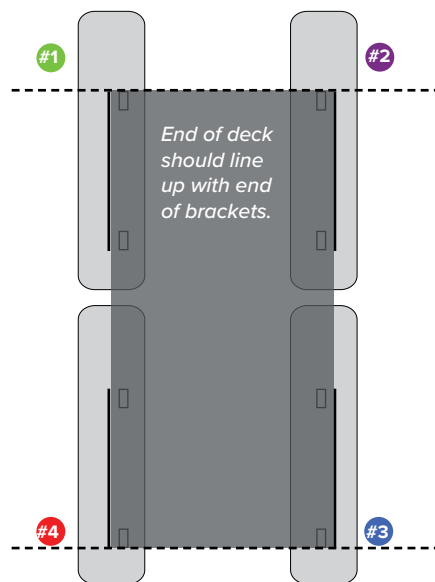
- (4) Self-Drilling Screws  
(taped to bottom of seat)

### What You'll Need:

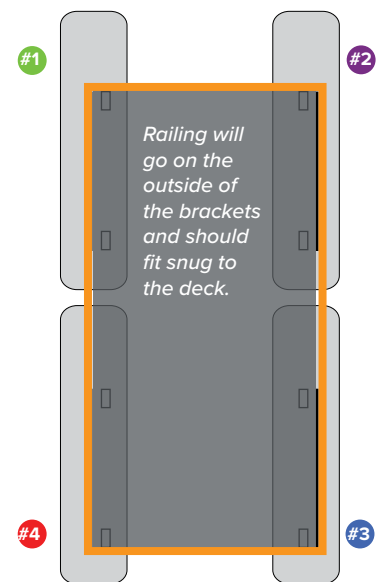
- 9/16" Socket
- 9/16" Wrench
- 3/8" Socket
- A friend to help you lift and place pieces



**FIGURE 1**



**FIGURE 2**

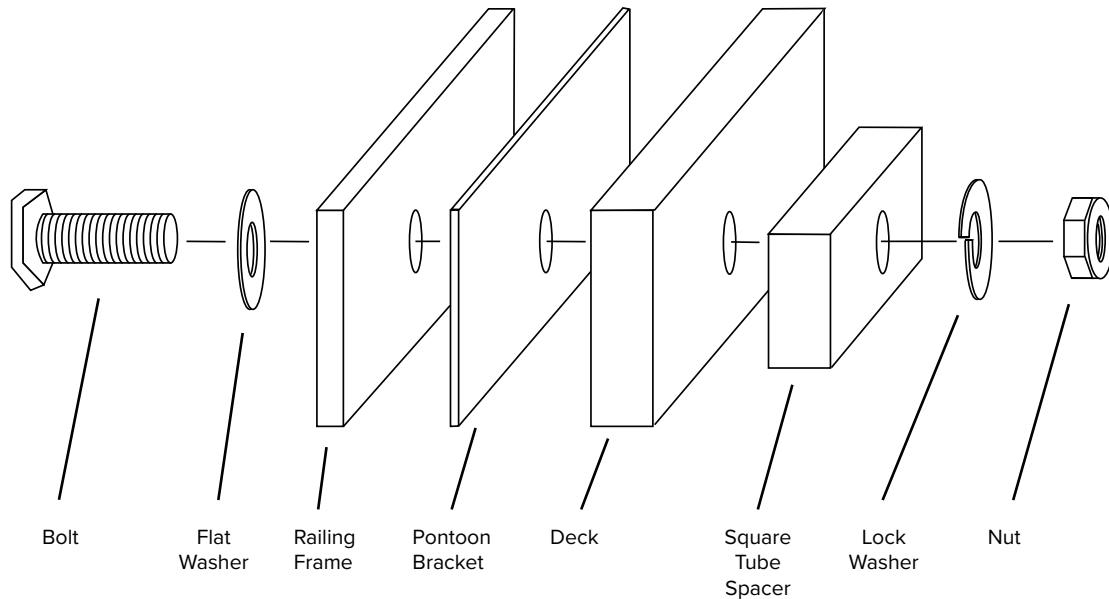


**FIGURE 3**

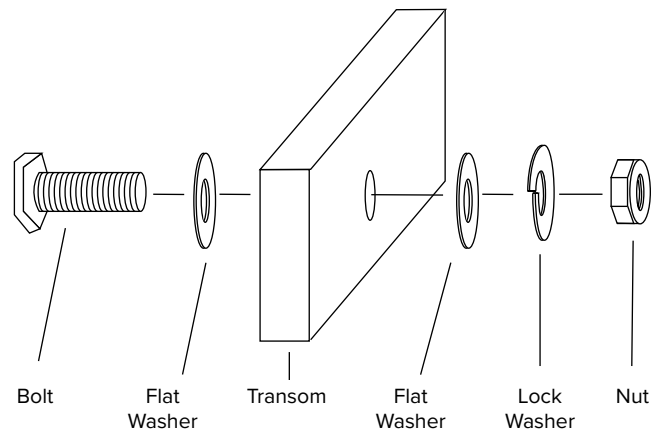
# POND KING PATRIOT

## Assembly Instructions Continued

**Step 6:** Using a 9/16" socket and wrench, secure the railing and deck to the pontoons with the bolts, flat washers, lock washers, and nuts arranging according to the diagram below. You will do this for each of the 8 holes (4 on each side)



**Step 7:** There are 2 holes for the transom on the green/purple dot side of the boat. The hardware for the transom is already on the transom in the order it needs to be assembled. Attach the transom to the frame using the bolts, flat washers, lock washers, and nuts as shown in the diagram to the right.



### INSTALLING THE SEATS

**Step 1:** Place a post in each of the mounts on the deck.

**Step 2:** Line the seat mount to the bottom of the seat. **\*\*Make sure to align the seat mount so the arrow is facing to the front of the seat (where your legs will be).\*\***

**Step 3:** Attach the mount to the seat using the (4) Self-Drilling screws and a 3/8" socket. **\*\*DO NOT OVERTIGHTEN or you will strip the plastic.\*\***

**Step 4:** Install the seat by placing the mount on top of the post. When you first sit down the seat will probably make a noise as it clicks into place.

If you have any questions, please don't hesitate to contact us.  
Phone: 940-668-2573 | Email: [marketing@pondking.com](mailto:marketing@pondking.com)