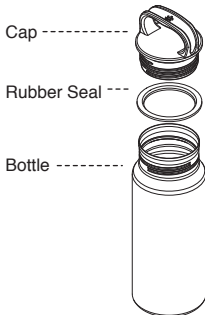


## TW-600RE-OC / TW-800RE-OC Titanium Aurora Bottle 600 / 800 in Ocean

Thank you very much for purchasing a Snow Peak product. This product is a bottle for carrying beverages. To use this product safely and correctly, please read these instructions carefully. After reading these instructions, keep this manual in a safe place for future reference. If you find anything in the instruction manual that is difficult to understand or find a defect with the product, stop using it immediately and contact the dealers where you purchased the product or Snow Peak Customer Service.

### Contents (name of each part)



### Specifications \*Figures in ( ) indicate TW-800RE-OC

- Material: Bottle / Titanium \*Oxidative Coloring, Cap / Biomass plastic, Rubber Seal / Silicone Rubber
  - Size:  $\phi 71 \times 220$ (h)mm / 2.8" x 8.7"(h)  
( $\phi 80 \times 230$ (h)mm / 3.1" x 9.1"(h))
  - Weight: 140g / 4.9 oz (150g / 5.3 oz)
  - Capacity: 600ml / 20.3 oz (800ml / 27.1 oz)
- \*The rubber seal is a replaceable part. When the seal becomes loose or dirty, replace it. Please purchase a replacement from our online store.  
\*Refer to page 2 for how to attach the rubber seal.

Parts number for the replacement

XTW-800-02 (Set of 2 Rubber Seals)

**Safety Precautions: Before use: please read thoroughly to ensure safety and to avoid accidents.**

#### **⚠ DANGER / Misuse could easily result in a serious accident or death.**

- Do not heat this product, as it may cause an explosion or damage to the cap.
- Do not use this product with Induction Heating, electric cooker, or microwave oven.
- Keep out of the reach of children, and only use according to the instructions.

#### **⚠ WARNING / Improper use may result in death or serious injury.**

- Before using the product, check that there are no abnormalities in each part. If you find any abnormalities, stop use immediately and contact the dealer where you purchased the product or Snow Peak Customer for inspection or repair. ●Please do not put the below items in the bottle. The use of such items may cause the internal pressure may rise and the cap to stick; the drink may spurt out, or the cap may be broken and shattered. All of these things may lead to injury or property damage. (1) Dry ice and carbonated drinks (2) Perishable beverages such as milk, milk drinks, and fruit juices (3) Hot drinks over 40 °C (104 °F) ●Please do not place this product on or next to heat sources such as stoves or open flames; doing so may cause burns, deformation, or discoloration.
- Ensure the rubber seal of the cap is installed correctly. Also, ensure the cap is securely closed; otherwise, contents may leak.

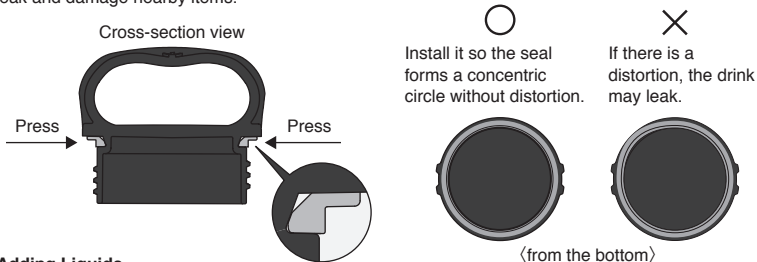
**⚠ CAUTION / Misuse could result in injury to the user and/or property damage.**

●Please wash this product well before using it for the first time, as oil may remain from the manufacturing process. ●Due to the single-wall structure, hot liquids easily transfer heat to the surface of the bottle. Do not use the bottle with hot drinks over 40 °C(104 °F ). ●When opening the cap, keep it horizontal, do not shake and open slowly. The contents may leak and lead to property damage. ●Do not boil the bottle or the cap, and do not put them in a dishwasher or dryer. The bottle and cap may be deformed due to heat, resulting in leaks and potential stains. ●Do not use this product for anything other than carrying drinks. ●Before carrying a drink in this product, please turn the bottle upside down and check for leaks. ●Please note: if you repeatedly use this product with coffee or tea, the inside of the bottle or rubber seal may change color. ●Due to the product's structure, filling with cold drinks will result in condensation on the outer surface. The temperature difference between the liquid and the outside air causes condensation. Use caution to avoid damaging surrounding items by getting them wet. ●If you plan not to use the product for a long time, loosen the cap before storing it to protect the rubber seal. ●Do not put drinks in this product and freeze it. Freezing drinks may cause the bottle to burst. ●If the drink's temperature drops, the internal pressure may decrease, making the cap difficult to open. If the cap does not open, running hot water over the outside of the bottle may help. ●Please avoid putting strong acidic or alkaline liquids in this bottle. Do not leave liquids in the bottle for long periods, as corrosion or discoloration may occur. ●If using this product for sports drinks, please wash the bottle immediately after use. Rinse the inside of the bottle with water if you are out and cannot use soap. Failure to clean appropriately may cause mold or rust. ●Avoid shocks or jolts from falling, dropping, or hitting. Shocks to the product may cause damage, rust, peeling of the coating, or leaks. ●Please break ice cubes into smaller pieces before putting them into the bottle. ●Do not leave the product's outer surface wet, as rust, odor, or dirt may accumulate.

**How to Use**

**1) Install the Rubber Seal Correctly.**

Mount the rubber seal as shown in the figure. If the rubber seal is not installed properly, the drink may leak and damage nearby items.



**2) Adding Liquids.**

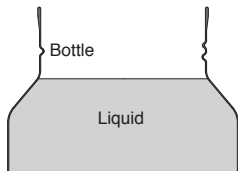
Please follow the guideline below when filling the bottle.

**3) Close the cap.**

Tighten the cap until it stops rotating, and check that there is no water leakage. If the cap is not tightened properly, the drink may leak and cause physical damage.

**4) Wash.**

Please wash the product thoroughly after use. Follow the maintenance instructions below.



## Maintenance

- After storing the product for an extended period, check to ensure no deterioration of the rubber seal, leakage, or dirt inside the bottle.
- For regular maintenance, please wash with a soft sponge using mild detergent. Do not use a metal scrub, abrasive sponge, or polishing powder.
- After use, wash the product, wipe off any moisture with a dry cloth, and let it dry.
- Do not put this product in the dishwasher or dryer.

| Parts<br>How to wash    | Bottle  |  | Cap   | Rubber Seal  |
|-------------------------|---|--|---|--|
|                         | Inside  | Outside  |   |  |
| Wash with running water | ○   | ○  | ○   | ○  |
| Soak in Oxygen Bleach   | ×   | ×  | ×   | ○<br>Be sure to remove the cap before cleaning.  |
| Chlorine bleach         | ×   | ×  | ×   | ×  |
| How to clean            | Wash with a soft sponge, rinse well with running water, and dry thoroughly. | Soak a soft cloth in diluted dishwashing detergent, wring it out, and wipe off the dirt. | Remove the rubber seal, and wash it carefully with a soft sponge, then dry it thoroughly. | Remove the cap and wash it carefully with a soft sponge. After drying it thoroughly, place the cap back on the bottle. When the cap is extra dirty, soak before washing. |

## About Purchasing Replaceable Parts

The cap and rubber seal are replaceable parts. They may wear out after repeated use. Check these parts every year. If the dirt on the rubber seal becomes noticeable or the cap becomes loose, replace it. Contact Snow Peak Customer Service for a replacement or purchase from our online store.

### Parts number for the replacement



XTW-600RE-01  
(Cap with Rubber Seal)



XTW-800-02  
(Set of 2 Rubber Seals)

## Warranty

The specifications of Snow Peak products are based on field testing and quality control to ensure the correct function and longevity of every product. If apparent defects in the product's manufacturing are found, the defective product will be repaired or exchanged free of charge. Damages, as follows, are not covered under warranty.

1. Material deterioration caused by age.
2. Damage caused by modifications or rough handling.
3. Damage caused by improper use not following the instruction manual.
4. Damage caused by unexpected accidents.
5. Damage not caused by defects in the manufacturing process.
6. Damage caused by dust or rust.
7. Damage or defects caused when dismantling the product.
8. Damage and defects caused by dropping or other shocks to the product.
9. Deterioration or failure of parts due to friction.
10. Damage caused by the use of the product in combination with another maker's products.

## Repair

- For repairs, please contact the retailer where you purchased the product or Snow Peak user service.
- When you ask for repair, please make sure that the product is dry and clean.
- Please attach a memo or some kind of tag indicating the needed repair and also please write details of when and how the damage occurred.
- Shipping cost and repair fee for the repair as follows.
  1. Within warranty: Return shipping cost and repair fee will be covered by Snow Peak / 2. Outside warranty: Return shipping cost and repair fee will be covered by the user.

### **Snow Peak USA, Inc.**

404 NW 23rd Avenue, Portland, Oregon 97210, USA  
Tel. +1 (503) 461-0781 / Instagram. @snowpeakusa  
Email. info@snowpeak.com / www.snowpeak.com

### **Snow Peak, Inc.**

456, Nakanohara, Sanjo-Shi, Niigata 955-0147 Japan  
Tel. +81 256-46-5858 / Fax. +81 256-46-5860  
www.snowpeak.co.jp

MADE IN JAPAN