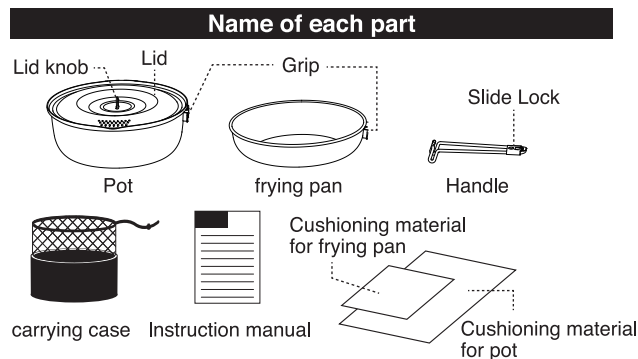




Instruction manual Ver 1.00

SCS-200/201
ALUMINUM NONSTICK COOKER 1000 / 1500

Thank you for your purchase. These instructions will help you understand how to properly use and care for your new cookset. Please read them carefully before using this product and keep them for future reference. Please confirm that you have received all the necessary components. Make sure you fully understand these instructions and the function of this product before you use it in the field. If the product is damaged upon receipt, please stop using it immediately and contact Snow Peak customer service or the Snow Peak Dealer where you purchased this product.



| Specification | | |
|---------------|---|--|
| | ALUMINUM COOKER 1000 | ALUMINUM COOKER 1500 |
| Material | [Pot•Frying pan•Lid] aluminum hard anodizing•fluorine nonstick coating [Lid] aluminum hard anodizing [Lid knob]Silicone [Handle•Grip]Stainless Steel | |
| Size | [Pot] 187×177×66mm 7.4"×6.9"×2.6" ※1 [frying pan] Φ171×35mm 6.7"×1.4" ※1 [Lid] Φ171×15mm 6.7"×0.6" ※2 | [Pot] 223×212×75mm 8.8"×8.3"×3" ※1 [frying pan] Φ206×46mm 8.1"×1.8" ※1 [Lid] 206×15mm 8.1"×0.6" ※2 |
| Full Capacity | [Pot] 1.2 ℓ 1.3qt. | [Pot] 1.9 ℓ 2qt. |
| Weight | 390g 0.86lbs ※3 | 520g 1.2lbs |

※1. except for grip ※2. except for lid knob
※3. except for carrying case and cushioning material

Before use

Please read and understand the contents of this instruction manual before use.

Caution Action may lead to a serious accident depending on the situation.

Warning Action may cause injury, damage to product or other valuables.

Caution Action may lead to a serious accident depending on the situation.

- Do not use the pot or fry pan without anything in it. This may cause permanent damage to the product or fire.
- Keep out of reach of children to avoid injury or burning by touching the pot.
- When using the cookset on a stove, adjust flame so that only the bottom is being heated, avoid flames that are larger than the pot / frying pan bottom. If the flame is too large, the handle will be too hot and may cause burns when gripped.
- The pot / lid / frying pan / handle are all made of metal. These parts become very hot during and after use; if not careful during use this could result in serious burns to hands. Do not touch parts with your hands without the use of an oven mitten or thick glove.

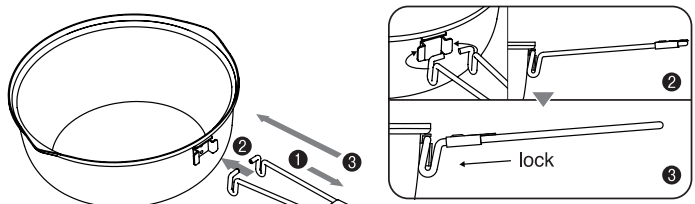
Warning Action may cause injury, damage to product or other valuables.

- Avoid powerful impacts.
- Wash thoroughly with a soft sponge and mild detergent before initial use.
- Before each use, check the lid knob or bracket to make sure they're tight. If they feel loose, stop using the product.
- Choose a stable, level area when cooking. Place the frying pan or pot in the center of the stove trivet.
- Do not cut foods on the surface of this product. It may damage the fluorine nonstick coating.
- Do not use this product in a microwave or conventional oven.
- Do not use this product over open flame, in a fireplace or over charcoal.
- Do not use for deep frying. Do not heat oil over 200 °C.
- Do not fill the pot completely with water or it may boil over when heated.
- Do not boil thick soup on high heat rapidly, stir soup while heating.
- Do not store food in this product for long periods of time (more than one day). This may cause corrosion.
- If you pour cold water into the hot pot / frying pan, it may cause permanent deformation to its shape. Please do not rapidly change the temperature of the product.
- After use, wash and dry thoroughly.
- Do not clean with harsh chemicals such as paint thinner, benzene, or alcohol.
- Fluorine nonstick coating is applied to pot / frying pan. Do not use metal utensils that may scratch the surface.

How to use

How to install the handle

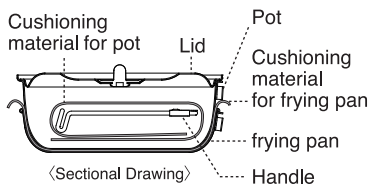
- 1 Move the slide lock rearward.
- 2 Insert the tip of the handle on the bracket.
- 3 Move the slide lock towards the pot side to lock the handle.
When you are ready to use, make sure it is locked.



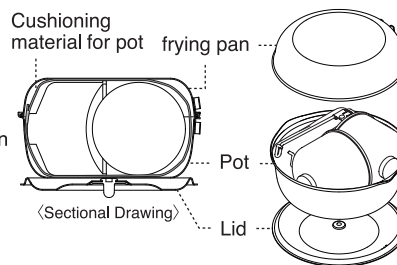
- Do the reverse when you remove the handle off.
- ※Pay attention not to pinch your hands when you attach the handle.

How to install

- 1 Cooker only
Store the products in the order shown in the drawing below and put in the carrying case.



- 2 With gas canister or stoves
Put the frying pan on the pot, as shown in the drawing below, put the lid under the pot and put in the carrying case.



*Fluorine nonstick coating is applied to all pots and frying pan. When you carry or store the product, use "cushioning materials" for pot / frying pan not to scratch the product.

Warranty

Snow Peak guarantees its products against manufacture defects. We have made every effort to insure our products are free from any defect or flaws. In the rare event that you feel this product has a defect or needs repair please contact the Snow Peak customer service or go to your local Snow Peak dealer where you purchased this product. Snow Peak will replace or repair any defect that may have been caused due to manufacturing. Snow Peak will not be able to replace this product if any damages occurred due to any of the following:

1. Material quality has changed due to aging of product.
2. Damage by altering or careless handling.
3. Damage due to improper handling which is prohibited as shown in instruction.
4. Product failure due to user accidents.
5. Any damage except with product defects due to manufacturing.
6. Damage by dirt and rust.
7. Damage by dismantling.
8. Deformation and failure of parts damaged by dropping or other similar incidents.
9. Product failure due to wear and tear by user.
10. Damage caused by improper use with other products.

Repair

- For repairs, please contact the retailer where you purchased the product or Snow Peak user service.
- When you ask for repair, please make sure that the product is dry and clean.
- Please attach a memo or some kind of tag indicating the needed repair and also please write details of when and how the damaged occurred.
- We set for the shipping cost and repair fee for the repair as follows.
 1. Within warranty: Return shipping cost and repair fee will be covered by Snow Peak.
 2. Outside warranty: Return shipping cost and repair fee will be covered by the user.

Snow Peak Inc. A Corporation of Japan
410 NW 14th Ave., Portland Oregon, 97209, USA
Tel. +1-503-697-3330 Fax. +1-503-699-1396
www.snowpeak.com

MADE IN CHINA