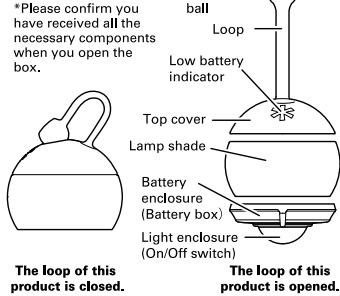


You have just purchased an experience like no other. This new revolutionary light gives you the enjoyment of modern illumination with the feel of natural lighting. Thank you for your purchase of this Snow Peak product. Please read the instructions carefully before use and keep for future reference.

Please confirm you have received all the necessary components. Before using this product in the outdoors, assemble and familiarize yourself with the function of the LED light at home before you take it on your next trip. If your lantern is damaged upon purchase please stop using it immediately and contact Snow Peak customer service or the Snow Peak Dealer where you purchased your new Light.

Name of each part



The loop of this product is closed.

The loop of this product is opened.

For your safety, carefully read instructions before use.

Meaning of icons in instructions.

For your safety, the following are warnings to the degree of risk of loss and damage to your LED Light or bodily injury. Please read and understand the contents of this instruction manual before use.

- Danger** This action could result in a major accident or in some cases result in death.
- Warning** This action could result in major accident.
- Attention** This action could result in severe injury or damage to product or other valuables.

Danger

- Keep out of reach of children. This could result in injury or choking if swallowed mistakenly.
- Do not touch any metal items to the terminal connection area. This may result in burns or electric shock.
- Do not dismantle or modify. This may result in fire or shock.
- Do not replace dry battery or touch terminal area with wet hands. This may result in fire or electric shock.
- Parents must supervise children using this product. Unsupervised children could damage product which could result in electric shock or in some cases burns.
- If you wear implantable medical device such as a pacemaker, do not place this product over the device or bring this product near the device. Do not put this product in your pocket or clothes as it may lead to a malfunction of the device.
- Please turn off the switch at a crowded place. There is a possibility that some people may wear implantable medical device such as a pacemaker and it is very dangerous to bring this product near the device. It may affect the normal operation of the device and may lead to a very serious situation to the people who wear the implantable medical device.

Warning

- Do not swing light around. This may result in damage to the product or cause injury to other persons or damage to valuables.
- Do not use this product where it may be soaked in water. This could result in electric shock or permanent damage to product.
- Always carry an extra power source, such as batteries.
- Do not use under high temperature as suggested usage. It may cause leaking of batteries or fire.
- Do not pull or bend the loop at a sharp angle. This may cause breakage to the silicone loop.
- Do not use the product near any kind of heat source. It may result in overheating or fire.

Attention

- After using, remove batteries for storage. If not done, it could result in battery leakage and permanent damage to product.
- Keep batteries out of reach of children.
- Only use dry Alkaline batteries. Do not use different types of batteries or combine types. This could result in battery leakage or overheating.
- Dropping of light may cause unexpected failure in normal use. Please thoroughly examine product for damage to avoid any electric shock.
- If battery box comes into contact with water, stop to use immediately. Wipe dry and let it air dry until it's completely dry. Once dry you may continue using.
- When you remove the magnet ball from the top cover, please make sure to hold the side of the magnetic ball firmly and remove it. Otherwise it may result in breakage.

Attention

- Do not bring the product close to the things which may affect the magnetism such as credit card, and other electronic devices.
- If you let the magnet near the electronic device, it may affect instrument panel and control panel and lead to malfunction of the product or an accident.

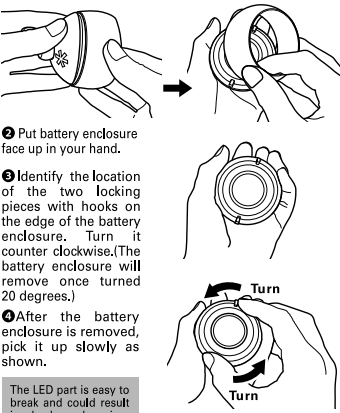
Measurement of Light performance

Lighting Lifetime
Lighting lifetime is when the light output is less than 0.25lux at a distance of 2m from the lens.

How to use

How to install batteries
As shown in the drawing, remove the lamp shade using your fingers from the battery enclosure.

Do not pull too hard on the lamp shade. This may cause the lamp shade to break.



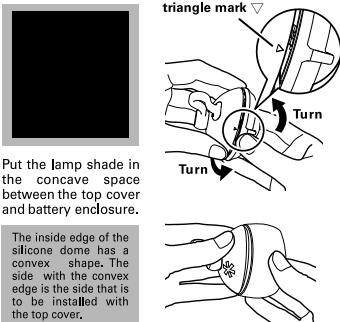
The LED part is easy to break and could result in shock or dropping, disassemble the light in a safe location.

Put AAA batteries into the battery enclosure making sure to confirm the batteries are oriented correctly to the proper terminals.

Caution: Battery for product
The batteries for this product are only AAA alkaline batteries (LR03). Performance may be altered with the use of other batteries and in some cases can cause permanent damage. Do not mix new and partially used batteries. This can decrease performance or cause battery leakage.

The Mini Hozuki is rated for water proof IPX4 meaning it will withstand light rain or light water spill. If light is immersed in water with water in battery box this may cause the Mini Hozuki to overheat and cause permanent damage. Do not use Mini Hozuki around any salt or ionic water.

Once you install new batteries, put the top cover onto the battery enclosure by adjusting the location of the hook on the top cover and the battery enclosure. After you confirm the hooks are matched, then turn the top cover clockwise and close.

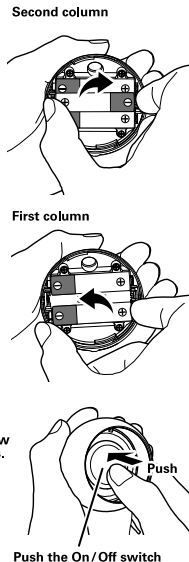


Put the lamp shade in the concave space between the top cover and battery enclosure.

The inside edge of the silicone dome has a convex shape. The side with the convex edge is the side that is to be installed with the top cover.

How to remove batteries

Remove the top cover similar to installation of the batteries in steps 1 to 4. Locate your finger on the plus side marking on the second column. Show as right drawing. Using your finger nails, pry and remove the batteries. Do the same for removing the batteries on first column and install the battery enclosure similar to installation of the batteries as indicated on 6.



When the lantern is not in use for a long period of time, remove batteries for storage. If not done, it could result in battery leakage and permanent damage to product.

How to operate
Candle mode and how to control brightness.

This product has 3 light settings and 2 control modes. To choose or change the mode, use switch on the battery enclosure and follow these steps.

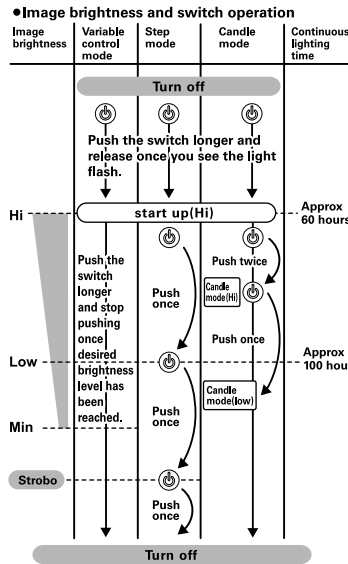
Choose lighting mode
Regular mode. (Keep lighting with fixed brightness.)
1. Keep pushing the switch for a while from off position and release the switch just after a flash.
2. Confirm lighting. * At that time, the brightness is maximized.

Candle mode
1. Push the switch twice from the maximum brightness.
2. Confirm its reaction of changing brightness.
3. If you are not successful, then repeat steps 1-2 after the light has been turned off by holding down the switch until light is off.

Strobe mode
1. Push the switch once from the low brightness setting to turn on the strobe light.
2. Push the switch one time from the strobe to turn off.

Adjusting the brightness. (You can choose 3 levels of brightness or your favorite brightness.)
1. Lighting at 0. → Maximum brightness.
2. Push the switch one time from the maximum brightness. → low brightness.

Variable brightness. (Set brightness freely.)
1. Continue to hold the switch down from on position. (when the light is on)
2. The brightness drops slowly.
3. Stop pushing when desired brightness is reached. * Brightness control works only by dimming, you cannot increase brightness from dimmer setting. If an increase in brightness is desired, repeat variable brightness procedure once light is in off position.

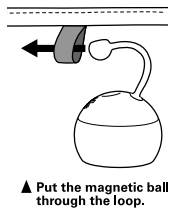


About low battery indicator
When the batteries are very low while lighting or when you turn light on with low batteries, the * mark on the battery enclosure will flash a red color letting you know the batteries are low. When the red light starts flashing, exchange the alkaline batteries with new batteries. (The light will flash more frequently if the battery level is lower. The flashing frequency depends on the batteries you use. The flashing light does not mean or guarantee the remaining battery level so please consider this only as a guide to exchange the batteries.)

Setting location
Please confirm that you have properly assembled your lantern and that it functions properly before you carrying this product out into the field.

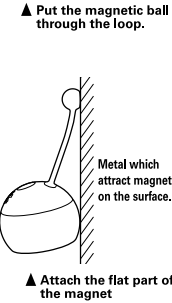
Do not swing light around. This may result in damage to the product or cause injury to other persons or damage to valuables.

To hang the light inside of a tent, use a gear loop located inside your tent. Put the magnetic ball through the loop and attach the magnet part to the top cover to hang.



Do not pull the battery enclosure while it is hang from the loop. This may damage the tent or the lantern.

If you set the light on a metallic surface which has a strong magnetic force, use the flat part of the magnet ball to hold the lantern.



If the magnetic force is weak, the magnet ball may slip off and result in the damage to your lantern.

Do not pull the main unit. This may cause breakage to the loop or malfunction of the product.

Please regularly care for your light, cleaning and caring for your light is important.

For stains on the body of the light, wipe it with a moist cloth. Use dry cloth or cotton swab to wipe off battery terminal. If the body gets wet, wipe moisture off with soft cloth completely and before storing. If water comes into the battery enclosure inside, stop using the product and remove the batteries and contact our user service.

Trouble shooting

Trouble	Reason	Action
No Lighting. (The low battery indicator does not blink.)	Batteries are dead or battery not properly installed.	Replace alkaline batteries properly then reference of the instruction "How to install batteries".
	Terminal is dirty.	Wipe terminals and batteries clean with dry cloth.
Light goes out immediately after turning on or weak battery lamp is flashing.	Remaining battery level is low.	Replaces with new alkaline batteries with correct orientation.
	Use with other types of batteries.	Use alkaline batteries. (AAA/LR03)
After trying all of the above, but nothing works.	Light maybe damaged.	Stop using immediately and call Snow Peak customer service or your local Snow Peak retailer.

Warranty

Snow Peak guarantees its products quality. We have made every effort to insure our products are free from any defect or flaws. In the rare event that you feel this product has a defect or needs repair please contact the Snow Peak customer service or go to your local Snow Peak dealer where you purchased this product. Snow Peak will replace or repair any defect that may have been caused due to manufacturing. Snow Peak will not be able to replace this product if any damages occurred due to any of the following:

- Material quality has changed due to aging of product.
- Damage by altering or careless handling.
- Damage due to improper handling which is prohibited as shown in instruction.
- Product failure due to user accidents.
- Any damage except with product defects due to manufacturing.
- Damage by dirt and rust.
- Damage by disassembly.
- Deformation and failure of parts damaged by dropping or other similar incidents.
- Product failure due to wear and tear by user.
- Damage caused by improper use with other products.

Specifications

- Sets includes : Mini Hozuki battery enclosure x 1, Instruction manual x 1, Test battery x 3
- Material : Top cover, Lens/Polycarbonate Battery enclosure, Batteries box / ABS Lamp shade, Loop/Silicon rubber
- Safe operating temperature range : 32 °F-95°F
- Drip-proof : At JIS IPX4
- Battery with (AAA) Alkaline batteries (LR3) x3
- Maximum lighting time : Hi-60 h Low-100 h (The time which the light can light 2 meter ahead at 0.25lx)
- Illumination : Hi-60 lm (ANSI lm)
- Color of light : Natural white
- Size : Dia 2.44" x H2.95"
- Weight : Without battery 2.36 oz

Manufacturer

Snow Peak Inc. A Corporation of Japan
410 NW 14th Ave., Portland Oregon, 97209, USA
Tel. +1-503-697-3330 Fax. +1-503-699-1396
www.snowpeak.com