

CS-116 Field Barista Mill

Thank you very much for purchasing a Snow Peak Product. To use this product safely and correctly, please read these instructions carefully before use. After reading these instructions, keep this manual in a safe place for future reference. If you find anything in the instruction manual that is difficult to understand, or if you find a defect with the product, stop using it immediately and contact the dealers where you purchased the product, or Snow Peak Customer Service.

Set Contents



Specifications

- Material: Stainless Steel, Iron, Ceramic, POM Resin, Natural Wood
- Set Contents: Mill Main Unit, Carry Case
- Size of Mill: 160x48x160(h)mm
- Storage Size: 57x48x160(h)mm
- Weight: 225g

Safety Precautions: Before use: please read thoroughly for safe use, and to avoid accidents.

⚠ CAUTION: Misuse could result in injury to the user and/or damage to property.

- This product is a coffee mill. Do not use for anything other than coffee, such as pepper, sesame, and tea leaves. It may cause a malfunction of the mill.
- Before use, wash with neutral detergent and a soft sponge and dry.
- The lid and handle are fixed. Do not try to force the handle off the lid.
- Due to the structure of this product, the lid rotates. When the part of the lid and the mill rub, minute scratches and dirt may be attached.
- Be careful not to let foreign subject get caught when installing or removing the mill from the container.
- When using, be sure to hold the mill firmly with one hand to avoid slipping.
- After use, be sure to receive the coffee beans from the container without leaving them. If the beans after milling are left for a long time, they may solidify due to the oil content from the beans.
- When using or carrying the product, be careful not to drop it or give strong impact. It may cause malfunction or damage.
- When lifting the mill, be sure to hold the container. The container may accidentally come off and fall.
- If hard objects such as pebbles get mixed into the mill, it may cause malfunction or damage.
- If the upper or lower blade is scratched or spill, stop using and contact the store where you purchased it.
- Do not put in dishwasher or dryer.
- If the upper and lower blades are in contact each other when idling (there's a rattling noise of the ceramic), loosen the roughness adjustment knob and separate the upper and lower blades. Use with the upper and lower blades may cause blade wear or damage.
- Do not remove the upper blade from the mill. The upper blade becomes easy to be removed, which may cause the mill to malfunction or be damaged.
- Do not place the mill near a heat source such as a bonfire, stove, combustion lantern, stove, heater, etc., or leave it in a hot environment such as a car under the blazing sun. It may cause damage or deformation.
- This product has small parts and sharp points. Keep out of reach of children.
- Extremely large beans may not fit between the upper and lower blades and may not be ground.

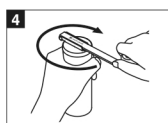
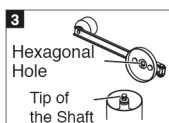
How to Use



① Take the mill out of the carry case, hold the knob and raise the handle in the direction shown in the drawing.

② Remove the lid and put coffee beans in the mill. You can put about 20g (2 cups) of coffee beans in the mill.

※Measuring spoon is not included.



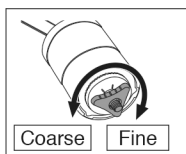
③ After adding the coffee beans, align the hexagonal hole on the handle with the tip of the shaft and close the lid.

④ Grind the coffee beans by turning the handle clockwise.

⑤ After grinding all the coffee beans, remove the container and transfer the coffee powder to a coffee filter, etc.

⑥ After use, attach the container to the mill and store it in the carry case with the handle folded.

How to Use The Grind Size Adjuster



Grind size can be adjusted by rotating the grind size adjuster at the bottom. Make adjustment with the container removed.

Operate the adjuster by pressing the handle with the lid attached.

Do a small amount of trial grinding in advance and adjust the size.

●For Fine Grind

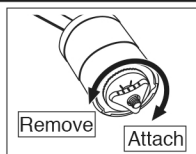
Turn the adjuster clockwise from the bottom to make the power finer.

※Be careful not to attach the upper and lower blades.

●For Coarse Grind

Turn the adjustment counter-clockwise from the bottom to make the power coarse.

How to Disassemble The Mill



Keep rotating the adjuster to counterclockwise from bottom to remove the adjuster and the lower blade.

Do not take off anything other than the adjuster and the lower blade.

How to Assemble The Mill



Insert the lower blade by aligning the position of the nail on the shaft with the lower blade slit.

※Be careful not to attach the adjuster in wrong direction.

Care Instruction

- Do not use metal brushes or powdered cleaners when washing the mill. Doing so can scratch the surface.
- The left over coffee grounds may affect the taste of coffee next time you use the mill. After use, remove the remaining grounds with a soft brush, or wash the inside thoroughly with water, wipe off and dry in a well-ventilated shade.
- Store by placing in the storage case and keeping in a dry location.
- Do not sterilize by boiling.
- When the lower blade is removed, a spring is installed inside the main body. Do not remove this spring during cleaning.