

**THE MOST
VERSATILE
CONCEALMENT
SHIRT
ON THE MARKET**

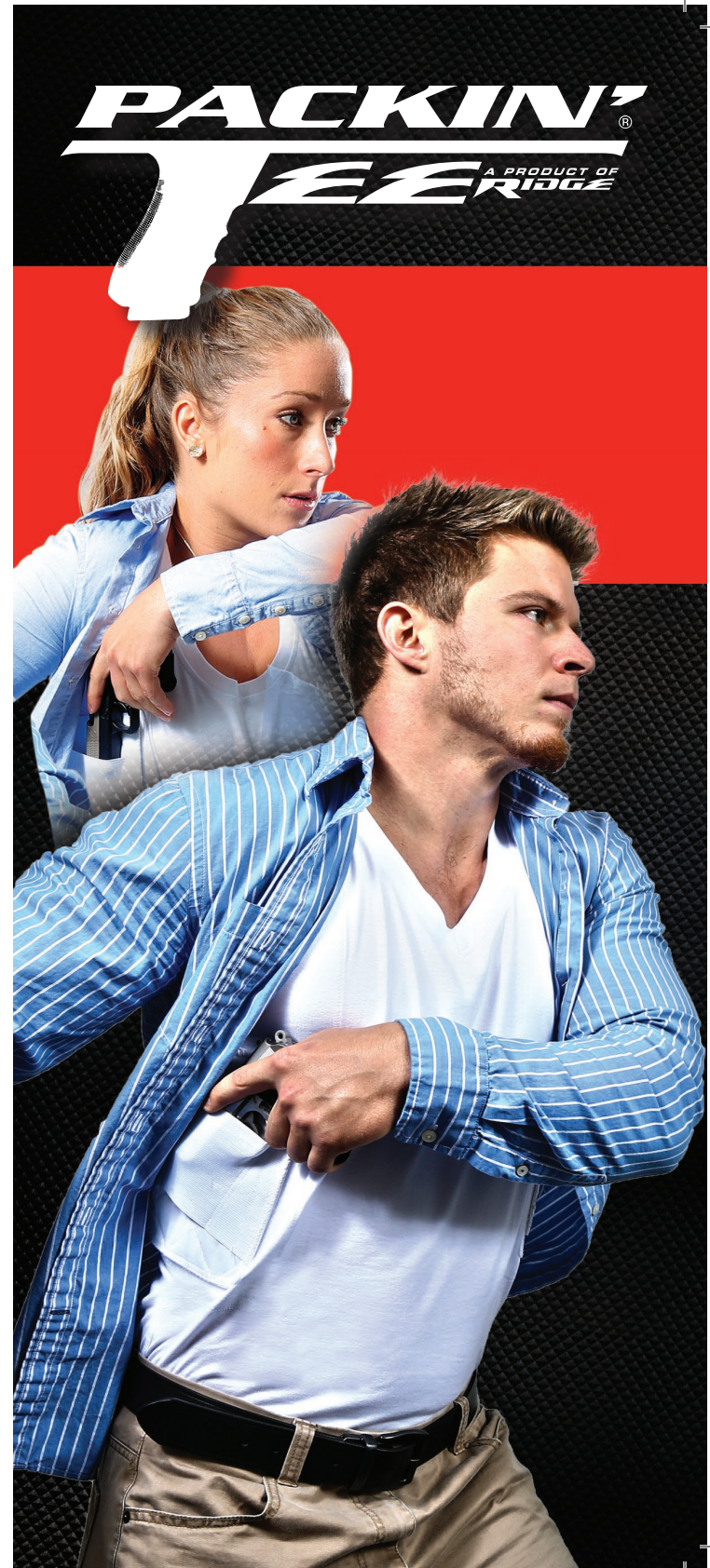
**PACKIN'[®]
TEE**

A superior t-shirt for concealed
weapons, designed for versatility,
comfort and style.



**PACKIN'[®]
TEE**
A PRODUCT OF
RIDGE

RIDGE OUTDOORS U.S.A., INC.
P.O. Box 389, Eustis, Florida 32727-0389



PACKIN' TEE®

THE LATEST IN CONCEALMENT GEAR



WOMEN'S SCOOP NECK

MEN'S CREW NECK

MEN'S V-NECK

Packin' Tee, a superior t-shirt for concealed weapons, is designed for versatility, comfort and style. You can now have your gun at your side without the restricting discomfort from other types of holsters used in carrying concealed weapons. No longer is there a need to wear jackets or other heavy outerwear to conceal your weapon; lightweight shirts/clothing can be worn over the Packin' Tee the same as you would any other undershirt.

- 100% Pre-Shrunk Cotton
- Extended Length
- Accessory Pouches
- Ability to have holster on left side, right side or in both places
- Holsters available for large or small frame guns
- Re-enforced mounting pads, shoulder and arm holes to prevent sagging
- Commercial grade hook & loop attachment pads for ease of switching accessories
- Available in Men's crew or v-neck, white or black, sizes SM to 4X
- Available in Women's scoopneck, white or black, sizes SM to XL



**AVAILABLE IN BLACK OR WHITE,
RIGHT OR LEFT-HANDED**



**NEW UNIVERSAL
HOLSTERS**

BLACK OR WHITE



**ACCESSORY
POUCH**



**MAGAZINE
POUCH**