

# Mobile Device Management for Modern Enterprises

---

Mobile technology has changed the way modern businesses operate. Learn how Scalefusion bolsters growth with mobility in enterprises.





# Introduction

As businesses ascend the digital progression, managing enterprise devices is imperative in order to expedite the desired growth from the mobility pursuit. These mobile devices are rigorously utilized by enterprises and employees. Equipping them with pertinent device policies & business resources is hence, urgent. Enterprises seek out a scalable solution that not only aids in the provisioning of devices to speed-up workforce productivity but also ensures that the IT teams are not encumbered with increased liabilities.

Scalefusion MDM helps enterprises in addressing the growing need of provisioning mobile devices with business resources without burdening the IT teams. This, while ensuring end-to-end device & corporate data security and employee productivity.

## Overview

Provision, configure & secure mobile phones, tablets, laptops, computers, rugged devices, POS systems & special-purpose devices over diverse operating systems. Administer content & apps on the devices whilst ensuring end-to-end device & data security.

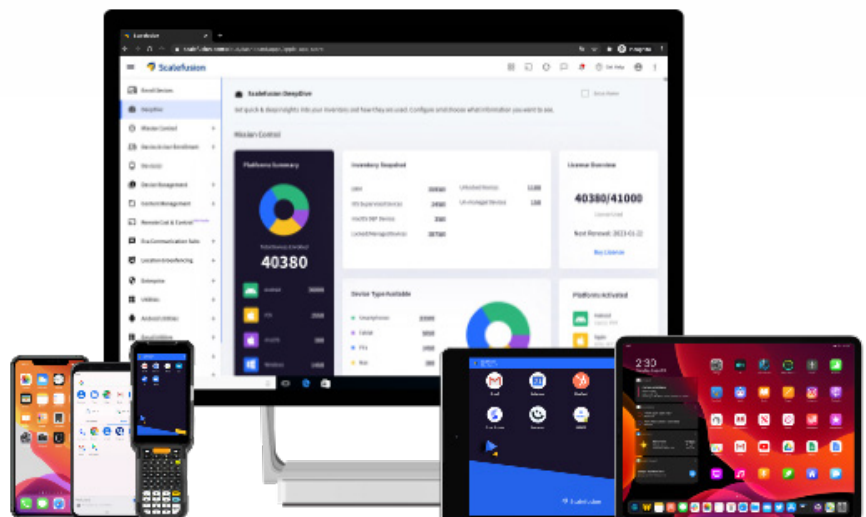
## Benefits

- Simplified device enrollment & provisioning
- Cross-platform support to adapt device diversity
- Uncluttered, user-friendly dashboard
- Extensive security for corporate data & device
- Streamlined application & content management
- Unified Communication for effective team collaboration
- Remote troubleshooting to reduce device downtime
- Task automation resulting in reduced IT work

# Scalefusion Mobile Device Management for Enterprises

## 1. Cross-platform Solution

In modern enterprises that employ a mix of knowledge workers and frontline workforce, there is considerable diversity in the kind of devices preferred by employees or required for the desired business operations. Understanding the need for facilitating this device diversity, Scalefusion MDM supports multiple OS and device types. With Scalefusion, IT admins can manage Android, iOS, macOS and Windows devices. Scalefusion extends support for corporate-owned as well as BYO devices.



## 2. Faster time to market

For enterprises deploying multiple devices, it is crucial to quickly provision and enroll devices in bulk, to ensure that the IT teams are not burdened in individually equipping the device with corporate policies & apps.

For faster, over the air deployment, Scalefusion offers support for:

- Android Zero-touch for Android devices
- Apple DEP for iOS and macOS devices
- Samsung KME for Samsung Knox devices
- Windows Autopilot for Windows 10 devices

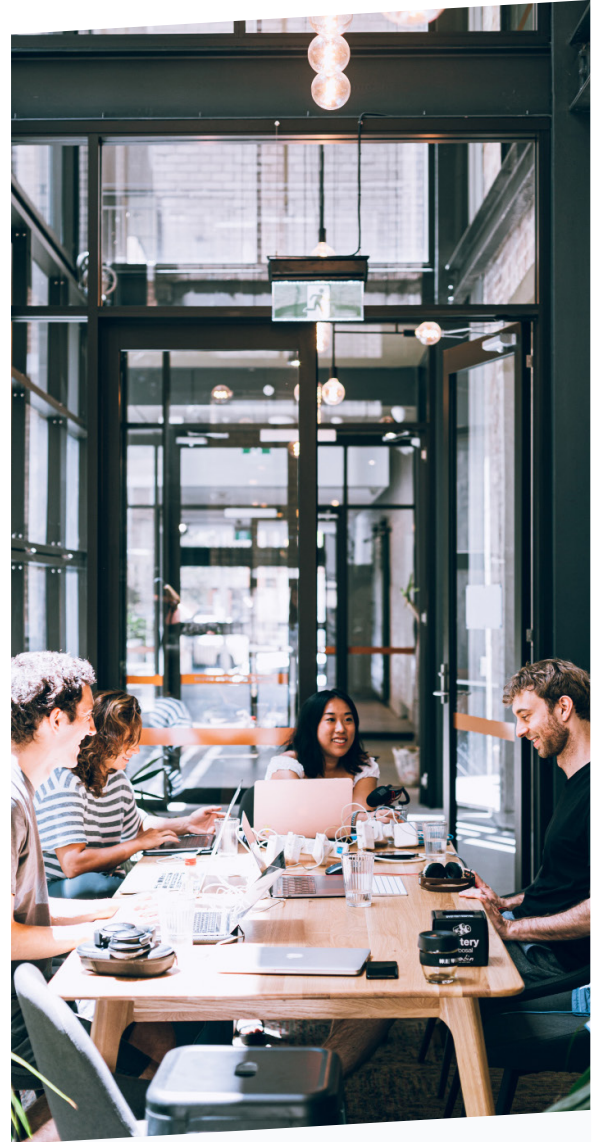
## 3. Extendable, user-friendly dashboard

Scalefusion simplifies device inventory management with a non-arduous dashboard. The Scalefusion dashboard is highly scalable and can be used to manage any number of devices with ease. The Scalefusion dashboard presents exclusive device analytics for battery, data, storage usage, security incidents & platform details. Further, IT teams can automate recurring IT tasks, schedule alerts & compliance checks and generate reports for improved device inventory management.

## 4. Extensive Security Configurations

Security against Data loss prevention (DLP) on managed devices is ensured on devices managed with Scalefusion. IT admins can

- Enforce passcodes & passcode policies
- Prevent factory resets
- Detect failed passcode attempts & SIM swaps
- Disable device boot in safe mode
- Disable hardware keys
- Ensure secure browsing in a controlled environment
- Remotely lock/wipe-off device data



[Try it now for free](#)

Register for a free 14-day evaluation at [www.scalefusion.com](http://www.scalefusion.com)

[Get a Demo](#)

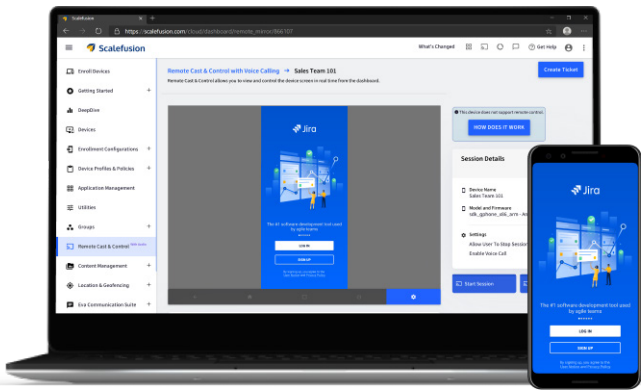
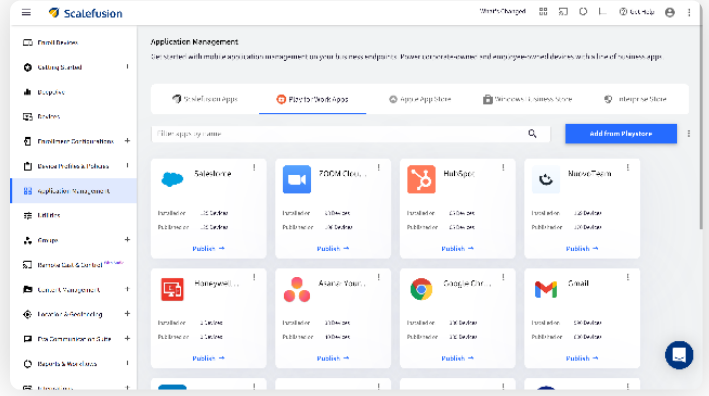
Request a demonstration and see how Scalefusion can help you in managing your devices and securing your corporate data.

[Book a Demo](#)

## 5. Application & Content Management

Scalefusion MDM offers expansive content & app management where the IT admins can curate the content made available on the managed device fleet. IT admins can publish, delete, re-assign public as well as private apps, push business content files on devices & remotely update them. IT teams can also allow/block certain websites, exert profanity & parental control on content accessed on managed devices. Using Scalefusion, IT teams can publish:

- Play for Work apps on AfW devices
- Apps on iOS and macOS devices using Apple Volume Purchase Program (VPP)
- Private apps on Android, iOS and Windows 10 devices.



## 6. Remote troubleshooting

To reduce device downtime on managed devices, IT admins can make use of the Remote Cast & Control feature of Scalefusion. IT teams can mirror the device screen, connect to the end-user over VoIP call to quickly resolve issues, or sync files. To support ITSM, IT teams can take screenshots or screen recordings & create context-aware support tickets. On select devices, IT admins can also take control of the device screens to resolve the issues over the air.

## Device & User Enrollment

IMEI based/Serial Number Based enrollment

Bulk Enrollment using QR Code / Config URL

License Key Enrollment

Configuration file-based Enrollment

ROM-based enrollment

Android for Work Setup

Android Zero Touch Enrollment

Apple Business Manager (APNs and DEP)

Samsung KME

Windows AutoPilot-based enrollment

Microsoft Azure AD-based enrollment

Active Directory-based enrollment

Bulk Enrollment using Email Invite (only for BYOD)

Work Profile Containerization (BYOD)

User Management (Add and manage users)

Create User Groups and subgroups

## Device Management

Kiosk mode

Single app mode

Multi-App Mode

Agent Mode

BYOD support

Supervised & Unsupervised support for Apple devices

Create custom branding

Change home screen & lock screen wallpaper

Create Device Profiles

Create Device Groups and subgroups

View registered devices with multiple filters

Custom Payload

LDAP Payload

Usage Curfews

Control/Defer Software Updates

Deploy Powershell Scripts

## Location Tracking

Real-time GPS-based location tracking

IP address-based location tracking

Apply Geofences

Multiple geofences

Geofence-based switch profile

Speed-based app locking

## Content Management & Filtering

Remotely push files and folders

Digital signage kiosk

Push content as screensaver

Whitelist websites

Multiple browser setting options

Note: Availability of certain features and functionality might vary based on operating system and device type.

Application Management
Silent App Installation
App distribution and management for App Store Apps, Play Store Apps, Windows Business Store Apps
Private App Distribution using Scalefusion Enterprise Store
App Configuration
Remotely remove/uninstall/block unused Apps
Google play integration
Apple App store integration
Windows Business Store integration
Support for Apple VPP- Volume Purchase Program
Office 365-based App Protection Policies

Utilities
Broadcast message
Lock/unlock devices
Buzz devices
Wi-Fi configuration
Find duplicate devices
Nudge inactive devices
Clear Browser Cache
Developer API
Configure Exchange ActiveSync Settings

Utilities
Configure & Manage Email Settings
App Notification setting
Lock Screen
Capture IP Address
Password protect safe mode
Internet connectivity indicator
Show OS upgrade menu option
Access root privileges (only for rooted devices)
Auto Publish Whitelist Websites
Hotspot setting
Timezone setting
Clear SD card files
Clear App data
Copy data from one device to other
Factory reset protection (for AFW devices)
Remote Mirroring
Data usage Report
Compliance Validation using SafetyNet Attestation
Detection and Compliance for Rooted Devices
Compliance Violation Action
Offline data sync and manage
Remote Alarm
Custom secured browser
File Sync

Note: Availability of certain features and functionality might vary based on operating system and device type.

Utilities
APN Settings
Active Directory Settings
Conditional Email Access for BYOD

Security & Compliance
Certificate Management
VPN Configuration
Passcode Policy
Minimum Passcode Length
Passcode Complexity
Passcode Validity
Passcode History
Passcode Failed attempts
Passcode Compliance Checks
Windows Information Protection
Windows Defender Policies
BitLocker
Windows Hello Authentication
File Vault Support
Firewall
Stealth Mode
Gatekeeper settings
Remote Enterprise Data Wipe

Security & Compliance
Allow/ Block use of Camera
Allow/ Block Screenshots
Allow/ Block Keyguard Trust Agent state
Allow/ Block fingerprint for unlock
Allow/ Block notification in lock screen
Allow/ Block adding of Google accounts
Allow/ Block adding of email accounts
Allow/ Block installation from unknown sources
Allow/ Block installing apps
Allow/ Block uninstalling apps
Allow/ Block clipboard between managed and unmanaged apps
Allow/ Block work apps to open documents from personal apps
Allow/ Block Personal apps to open documents from work apps
Allow/ Block Personal apps to share documents from work apps
Allow/ Block work apps to share documents from personal apps
Allow/ Block work contacts caller id info to show in Dialer
Allow/ Block apps widgets to be added to Home Screen

Note: Availability of certain features and functionality might vary based on operating system and device type.



Security & Compliance
Allow/Block sharing Enterprise contact with Bluetooth Devices
Allow/ Block work contacts in personal contacts app
Allow/Block use of Siri and Dictation
Allow/Block Apple Music
Allow/Block Touch ID to unlock device
Allow/Block password sharing
Allow/Block password Autofill
Allow/Block iCloud Drive and sharing
Allow/Block Airdrop
Allow/Block Mail
Allow/Block Messages
Allow/Block Reminders
Configure media sharing
Allow/Block/Read-Only Disk Images
Allow/Block/Read-Only DVD-RAM, CDs and CD-ROMS, recordable disks
Allow/Block Eject at logout
Allow/Block iTunes File Sharing
Allow/Block use of Game Center
Allow/Block Mouse
Allow/Block Accessibility
Allow/Block Parental Controls
Allow/Block Bluetooth

Security & Compliance
Allow/Block Printer & Scanner
Allow/Block Extensions
Allow/Block Fibre Channel
Allow/Block Startup Disk
Allow/Block iCloud
Allow/Block Time Machine
Allow/Block Ink
Allow/Block Internet Accounts
Allow/Block Trackpad
Allow/Block Keyboard
Allow/Block Wallet & Apple Pay
Allow/Block Language & Text
Allow/Block Xsan
Allow/Block Microsoft Feedback Notification
Allow/Block USB connections and Storage Card
Allow/Block Telemetry
Allow/Block Cortana
Allow/Block Microsoft account connection
Allow/Block Add non Microsoft Accounts
Allow/Block Sync Settings across Devices

Note: Availability of certain features and functionality might vary based on operating system and device type.



## Audit, Dashboard & Reporting

Audit Logs

Detailed reporting

DeepDive Dashboard

## Reports

Data usage Report

Location Report

Application Version Report

Account Activity

Remote Mirror

Sim Swaps

Unlock Attempts

Device Vitals

File Dock Analytics

Device Availability

Screen Time (App Analytics)

Geo Fence Logs

Battery History

Workflow Reports

## Workflows

Schedule Profile Switch

Schedule Geofence Based Profile Switch

Publish Apps

Schedule Lock/Unlock

Schedule Reboot

Schedule Clear App Data (9.0 and above)

Schedule Clear Browser Cache

Switch Presentation

Battery Compliance

Geo-Fence Compliance

Data Usage Compliance

Inactivity Compliance Alert

Security Incidents Compliance

Schedule Broadcast Messages

Storage Compliance Alert

Schedule Device Details Report

## Remote Troubleshooting

Remote Cast

Remote Control

VoIP calling

File Sync

Note: Availability of certain features and functionality might vary based on operating system and device type.

## Remote Troubleshooting

Screenshots and screen recordings

Context-aware ticketing on integrated ITSM platforms

## Integrations

ITSM Integration -JIRA

ITSM Integration -FreshService

Note: Availability of certain features and functionality might vary based on operating system and device type.

## Summary

Expedite business growth by leveraging the versatile capabilities of Scalefusion MDM and make the most of your mobility. Augment workforce productivity & corporate data security while enabling simplified device management for your IT teams.

### Try it now for free

Register for a free 14-day evaluation at [www.scalefusion.com](http://www.scalefusion.com)

### Get a Demo

Request a demonstration and see how Scalefusion can help you in managing your devices and securing your corporate data.

### Book a Demo

### About Scalefusion

Ambitious companies around the world trust Scalefusion to secure and manage endpoints including smartphones, tablets, laptops, rugged devices, POS, and digital signages. Our mission is to make Device Management simple and effortless along with providing world class customer support.

### Enterprise Sales & Partnerships

[sales@scalefusion.com](mailto:sales@scalefusion.com)

[partners@scalefusion.com](mailto:partners@scalefusion.com)

### Call Us

(US) +1-650-273-5999

(INDIA) +91-8499-835020

Copyright© 2021 ProMobi Technologies. All rights reserved. Scalefusion, the Scalefusion logo mark appearing herein are property of ProMobi Technologies Pvt. Ltd. All other marks are the property of their respective owner/s.