

## Troubleshooting iGen4500 Issues

**Issue 1:** Generator will crank but will not fully start, if it does start it stalls out.

**Cause:** Automatic choke is not adjusting correctly.

**Solution:** Long term fix: Follow directions in **Issue 2** below.

Short term fix: Remove engine service panel and manually move choke. See below:

### COLD START:



Choke location



1. Move choke to the right to close.
2. Press start button
3. As the engine starts move the choke left to open.

**Issue 2:** Push button start will not work when battery is connected and battery switch is on and illuminated red.

**Cause:** The control cables that connect to the starting module are being pulled out when the unit is dropped excessively during shipping.

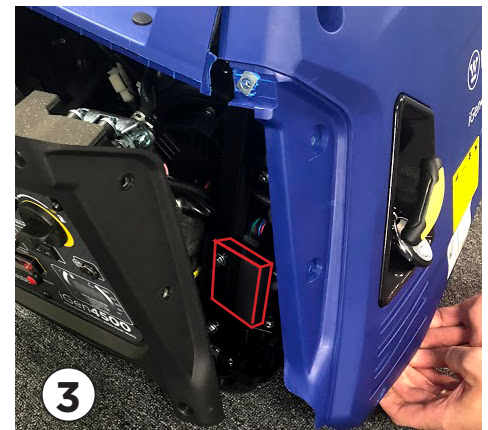
**Solution:** Follow the steps below to reconnect the starter module:



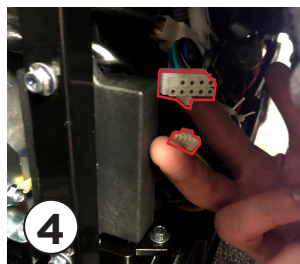
1 Remove 8 screws that hold on front panel



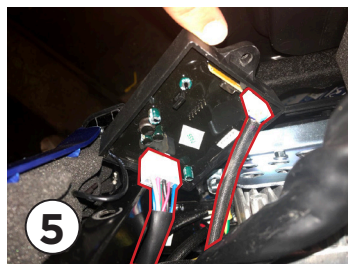
2 Remove 6 10mm bolts that hold on side panel



3 Pull off front control panel and pull open the underside of the side panel to gain access to the starter module box that is bolted to the frame.  
NOTE: Be careful to not bend side panel too much to prevent cracking.



4 If either or both of these connectors are disconnected, you will need to reconnect them.



5 If you cannot reach the connectors, then remove the two bolts holding the starting module to the frame and reconnect loose connectors. Reinstall starting module and reassemble the front and side covers.