



Alta California

Botanicals

albert.coles@gmail.com; yashoda@emam.us  
415-599-5531

Sample 058-100121-319

CBDa Acidic Hemp

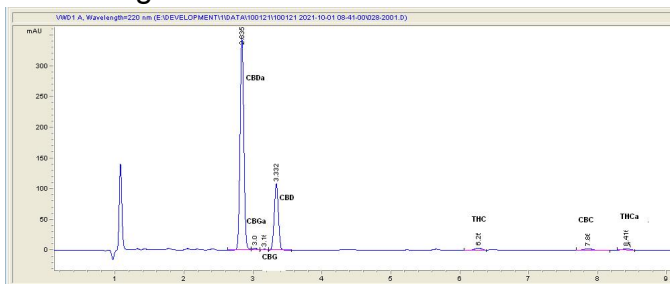
Sample Submitted: 10-01-2021; Report Date: 10-01-2021

Sample Density: 940 mg/ml; Sample Unit Size: 28.40 g

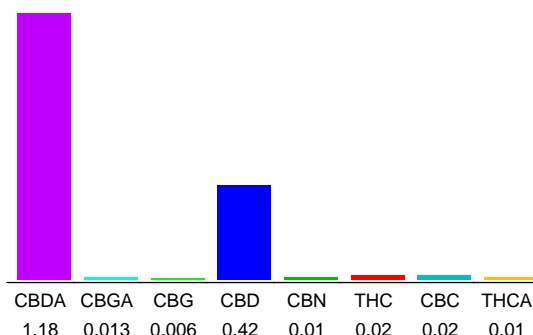
## CBDa Acidic Hemp

Tincture

### Chromatogram



### Cannabinoid Profile



### Cannabinoid Profile by HPLC

**0.03%**  
Calculated THC Yield

**1.45%**  
Calculated CBD Yield

**1.68%**  
Total Cannabinoids

Cannabinoid	% wt	mg/ml	mg/unit
CBDA	1.18	11.09	335.12
CBGA	0.013	0.1222	3.692
CBG	0.006	0.0564	1.704
CBD	0.42	3.948	119.28
CBN	0.01	0.094	2.84
THC	0.02	0.188	5.68
CBC	0.02	0.188	5.68
THCA	0.01	0.094	2.84
<b>Total Cannabinoids</b>	<b>1.68</b>	<b>15.8</b>	<b>476.8</b>
<b>Calculated THC Yield</b>	<b>0.03</b>	<b>0.27</b>	<b>8.17</b>
<b>Calculated CBD Yield</b>	<b>1.45</b>	<b>13.68</b>	<b>413.18</b>

Calculated Maximum THC Yield =  $THC + 0.877 * THCA$   
Calculated Maximum CBD Yield =  $CBD + 0.877 * CBDA$

**Marin Analytics, LLC**

250 Bel Marin Keys Blvd, Suite D4  
Novato, CA 94949

415-936-6477 / sarabiancalana1@gmail.com

**Sara Biancalana**  
Chief Scientist

This sample has been tested by Marin Analytics, LLC using valid testing methodologies and a quality system. Values reported relate only to the sample tested. Marin Analytics, LLC makes no claims as to the efficacy, safety or other risks associated with any detected or non-detected levels of any compounds reported herein. This Certificate shall not be reproduced except in full, without the written approval of Marin Analytics, LLC.