

***PORTO
CERVO
COLLECTION***





ABOVE:

Iris wears the Red
Woods Pants



ABOVE:
the Emerald
Jumpsuit



RIGHT:
the Emerald Outfit

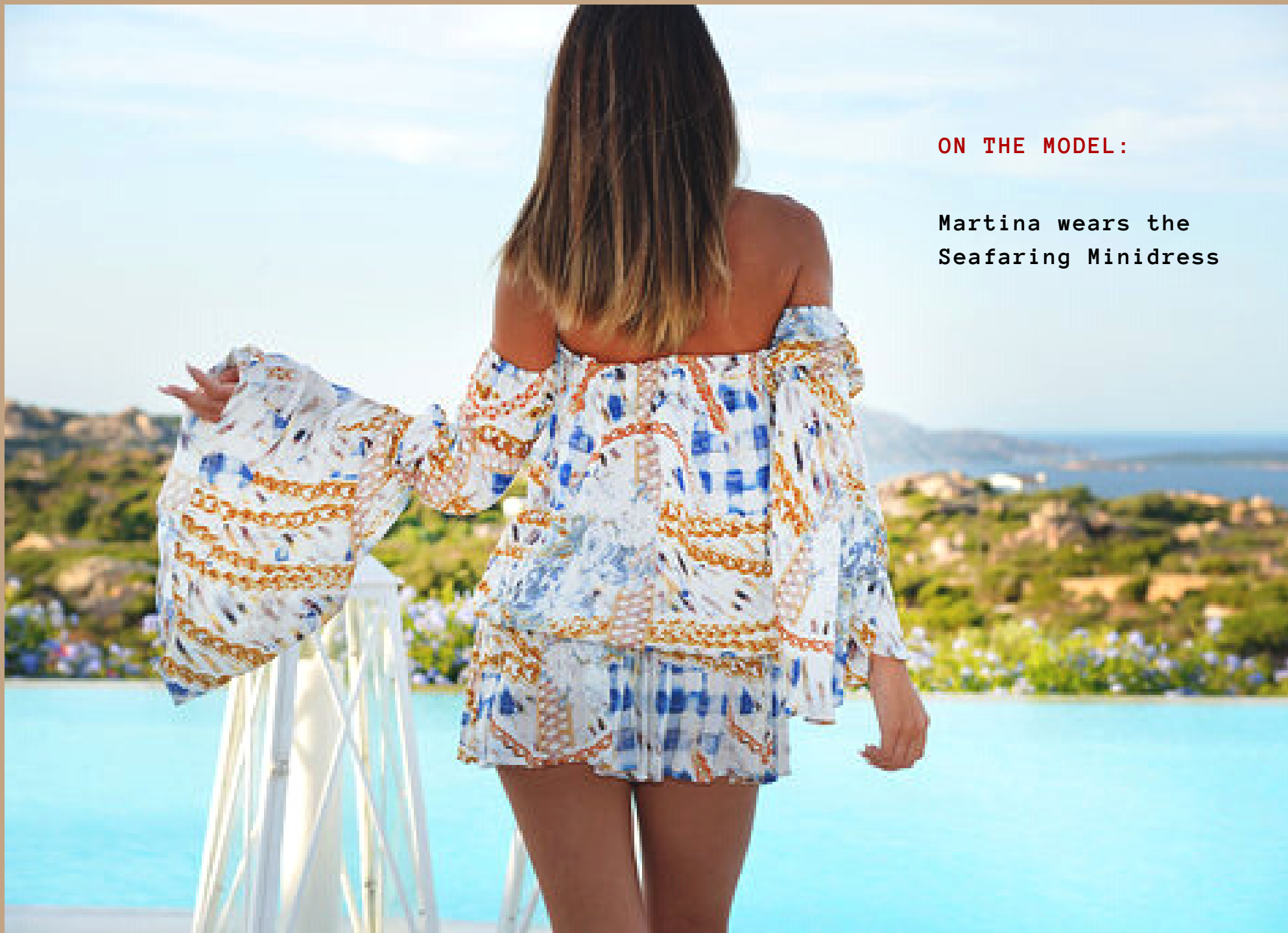
RIGHT:

Martina wears the
Watercolour pants

BELOW:

The painted
Minidress





ON THE MODEL:

**Martina wears the
Seafaring Minidress**

ON THE MODEL:

the Romantic Pink
Long Dress



