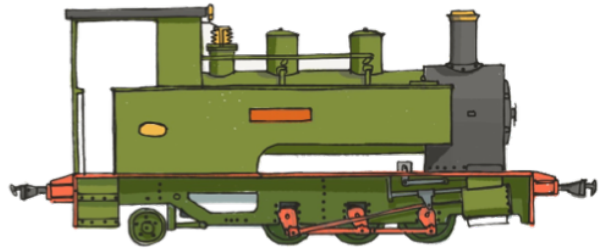


# Bowaters

## MODELS

specialising in distinctive 16mm models



### Bowaters Models – BMS Series Instructions Caboose



#### Requires

- IP Engineering Large Laser Cut Bogies in the gauge of your choice
- Accucraft Chopper Couplings Z2

#### Required Tools

- Fine Sandpaper/Emery paper or boards
- Small Files
- PVA Glue
- Super Glue
- Sharp Craft Knife

## Prototype Information

These wagons originally operated on the Sandy River and Rangeley Lakes Railroad. These wagons/cars operated from the railroad's early days right up to the day it was torn up and scrapped in the mid 1930s. They were used to hold conductors, limited passenger carriage and less than car load freight. They were used the whole history of the railroad. When the railroad quit, 4 survived. 3 though the man widely regarded to as the saviour of the Maine two footers Ellis Atwood and the 4<sup>th</sup> first though private ownership then by the preserved Sandy River and Rangeley Lakes Railroad. A pair of replicas have been built since one in the UK and one in the United States.

## About the Kit

The kit is a wooden kit comprising of a set of laser cut wooden parts.

## Chassis Fitting

This kit is designed for IP Engineering Large Laser cut Bogies. These are assembled as per the instructions. These are fitted at the end of the assembly stage.

## Couplings

This kit is designed to make use of Accucraft Chopper Couplings which are to be mounted in the prototypical location.

## Instruction notes

With these instructions, there are images which show various stages of the construction of one of the kits. They are of the Test builds for BMS-301 and BMS-302 which isn't representative of the kit you have brought. They are for reference purposes only.

## Painting

- Main Paint Scheme
  - Bright Red. Light Grey Roof. Lettering in White.

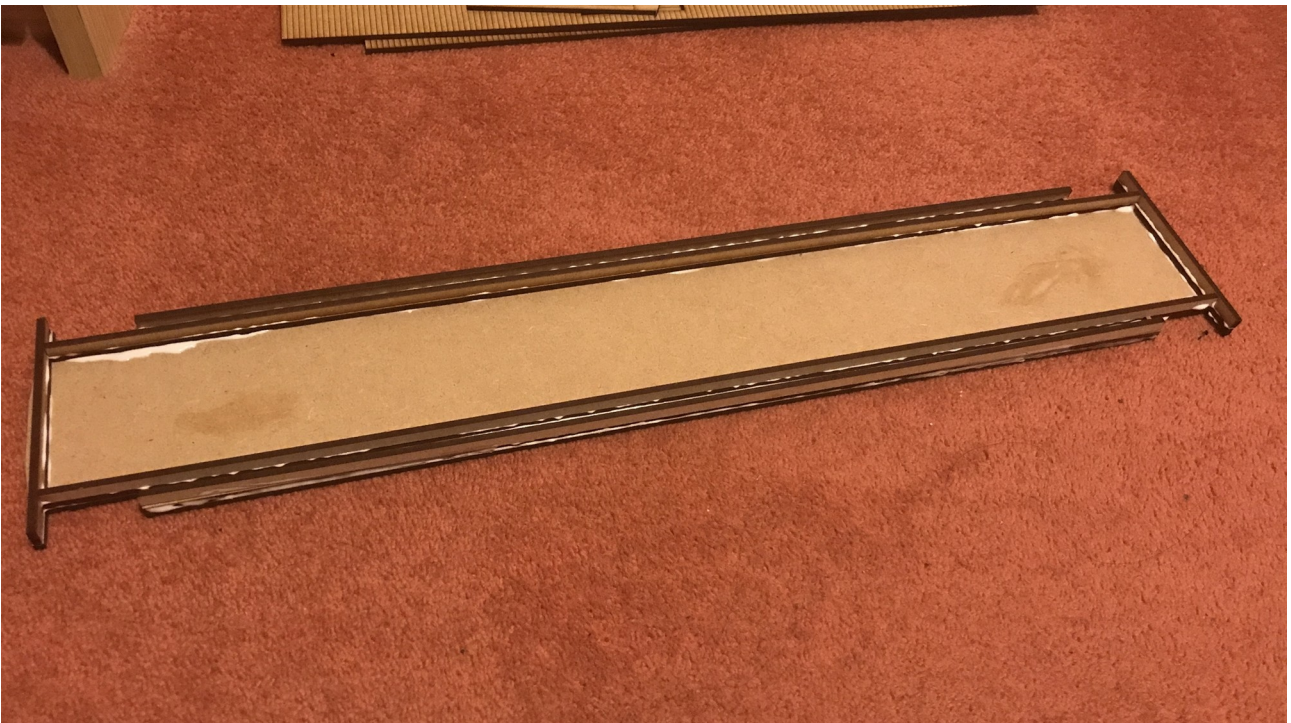
Please note, the surviving Cabooses have seen a variety of schemes over time especially during the Edaville ownership period. It is always best to reference against prototype images/known paint schemes.

# Please Turn over

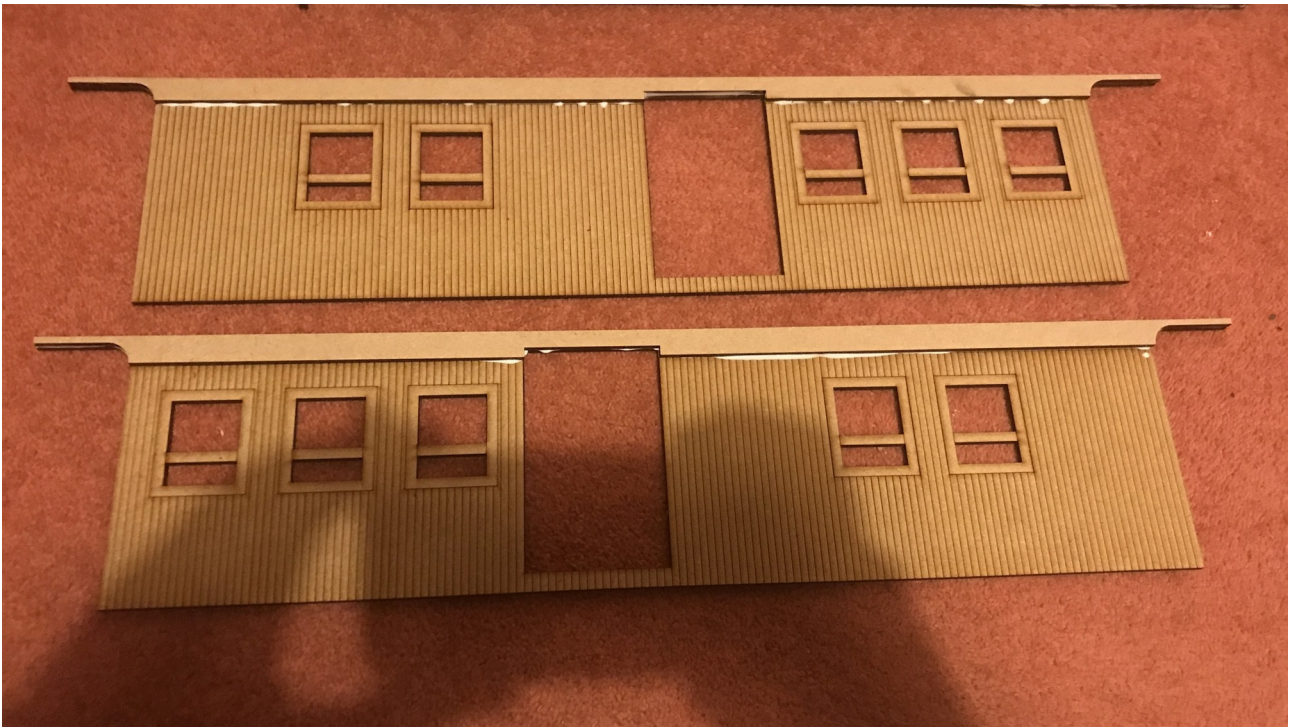
Please read though these instructions before beginning to assemble your  
kit



Start with the main floor section. These feature laser cut planks on the top side. Next, flip the part over and attach the frame underside sections to the floor. The components all sit end to end and sit on the bottom of the floor.



Next, attach the drawbar mounts to the ends. These sit on the shorter sections of underside framing. Then, attach the side frames to the model. There are two of these that sit on the outside of the model.



Next start on the sides. Glue the letterboards to the side panels of the caboose. The cut out on the letterboard will match with the door on the side.



Returning to the chassis, glue the end body pieces to the chassis. These sit over laser cut marks at each end of the main chassis.



Once dry, attach one of the side pieces. These sit so the bottom of the door is level with the floor and the sides sit level with the top of the end pieces.



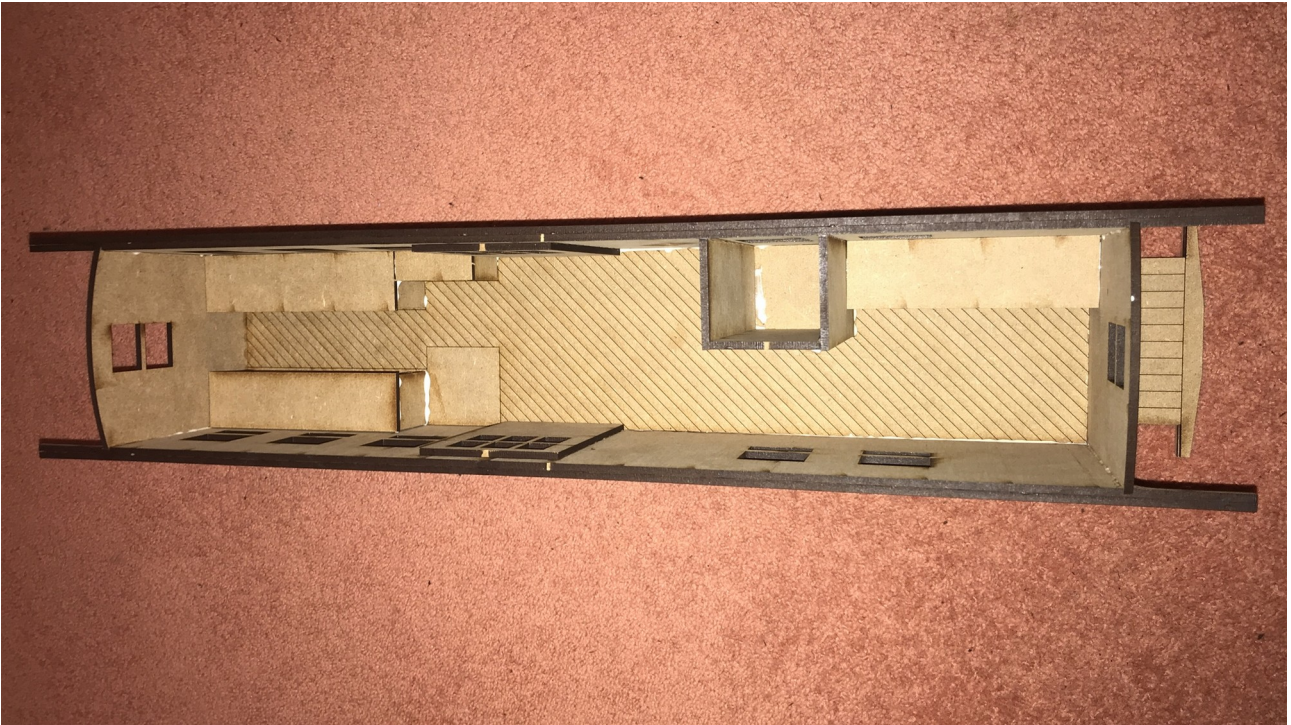
Now attach the second side.



Now attach the doors. The doors sit inside the body with overlaps on each side of the door.



Interior time. Glue the uprights inside the body. These sit inside the long thin sections laser etched on the floor. It is now the best time to glue the toiler compartment in place.



Now add the seat tops.



Roof time. Start with the end with the most windows. Using the roof planks as a rough guide, glue the roof supports into the model. We recommend two for this section. The roof planks are glued across the model and sit flush with the end of the model. To aid with aligning them, see the next step.



Glue the first side of the Cuplola on the roof. These sit on the sides of the model and flush with the roof section already installed. We recommend adding this part and the parts mentioned in the step before at the same time.



Now glue the rest of the cuplola sides in place.





Add the remaining roof supports to the roof area. One in the Cuplola and 2 on the rear section.



Glue in the rear section of the caboose roof. This sits both flush with the cuplola side and the end of the caboose.



Now glue on the cuplola roof.



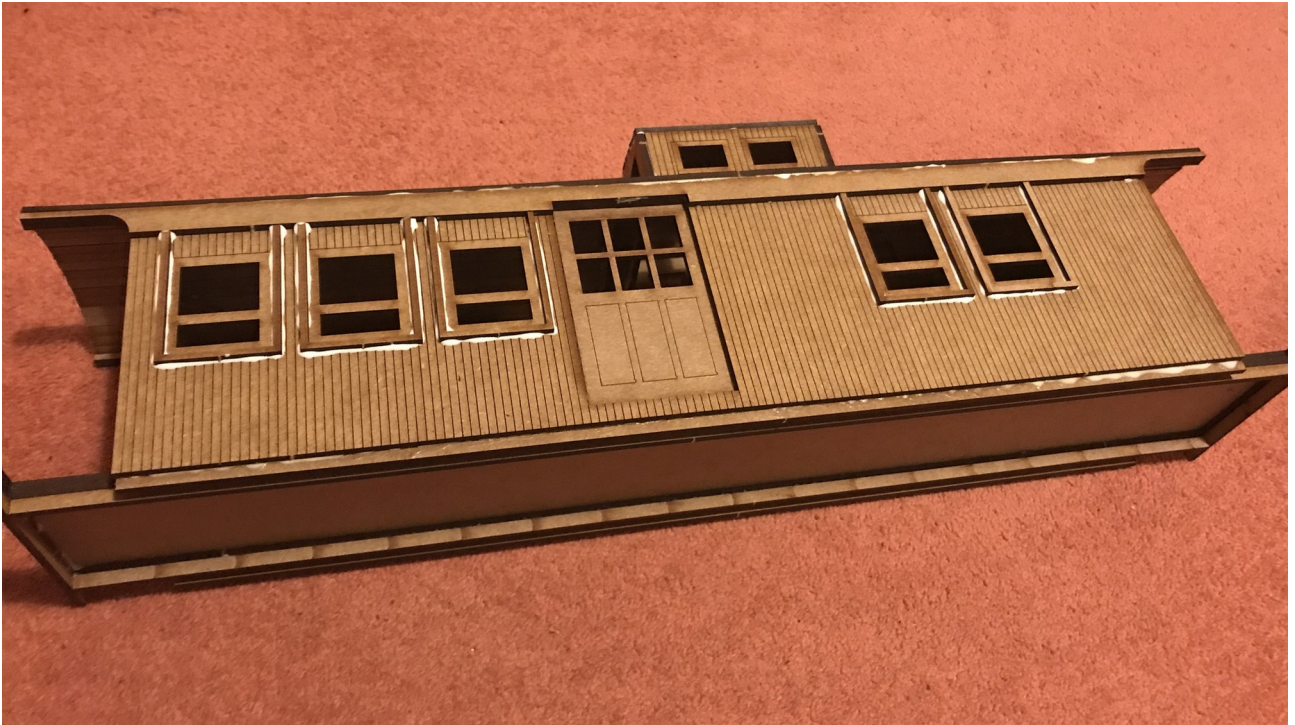
Now attach the bogies and couplings. The bogies sit in the middle of the caboose with the edge of the bogie sat just behind the platform section. The top of the coupling box should sit level with the bottom of the floor section. The bogies should be installed with room to swing for curves. Note, if in doubt, reference again prototype pictures.



With the bogies installed, time to add the steps. Glue the U shape parts of the step to the step plank to make a L shape.



Now glue them onto the platforms so they are level with the top of the platform.



This final step only applies to BMS-302 552 and BMS-303 553. There is some window beading which needs adding to the sides. These are the bigger of the U shapes included with your kit.

Your Model is now complete.



We hope you enjoy your Bowaters Models kit! If you have any questions, don't hesitate to contact us on [info@bowatersmodels.co.uk](mailto:info@bowatersmodels.co.uk)

We thank you for your custom.