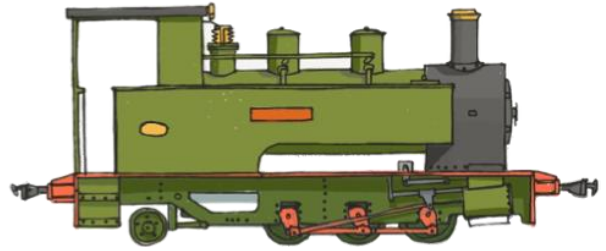


# Bowaters

## MODELS

specialising in distinctive 16mm models



## Bowaters Models – BMGL-002 Instructions



### Requires

- Glazing Material

### Required Tools

- Fine Sandpaper/Emery paper or boards
- Small Files
- PVA Glue
- Super Glue
- Sharp Craft Knife

## Prototype Information

These engines were originally built for various users around the country including the GWR and LNER. When these were withdrawn, a number became available for further purchase of which a small number were brought by various preserved railways. The most famous of these is Isebrook which is the former GWR 12 which was sold into industrial service.

## About the Kit

The kit is a wooden kit comprising of a set of laser cut wooden parts and 3D printed sections.

## Chassis Fitting

This kit is designed for a Bowaters Models Power Bogie which is included as part of your kit. This is assembled as per the instructions. Make sure the chassis works in the way you intend it before fitting to the chassis. Note, this kit is designed for either Manual control using switches (single speed) or using full Radio Control for which space has been left within the model.

## Couplings

This kit is designed to make use of the Walsall Engineering 3 Link Couplings. These are slotted onto the buffer beams and held into place using the supplied split pin.

## Instruction notes

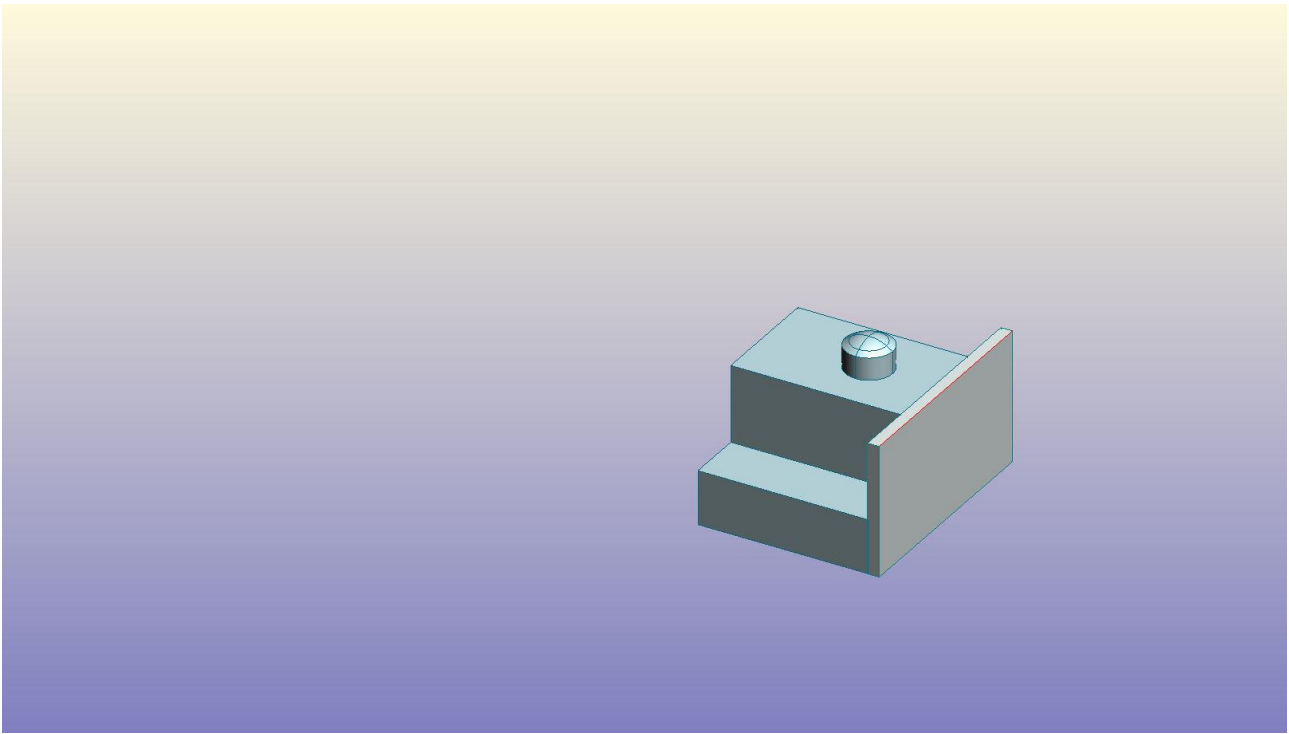
With these instructions, there are images which show various stages of the construction of two coach kits. They are of the digital test build for BMGL-002 which may not be representative of the kit you have brought. They are for reference purposes only.

## Painting

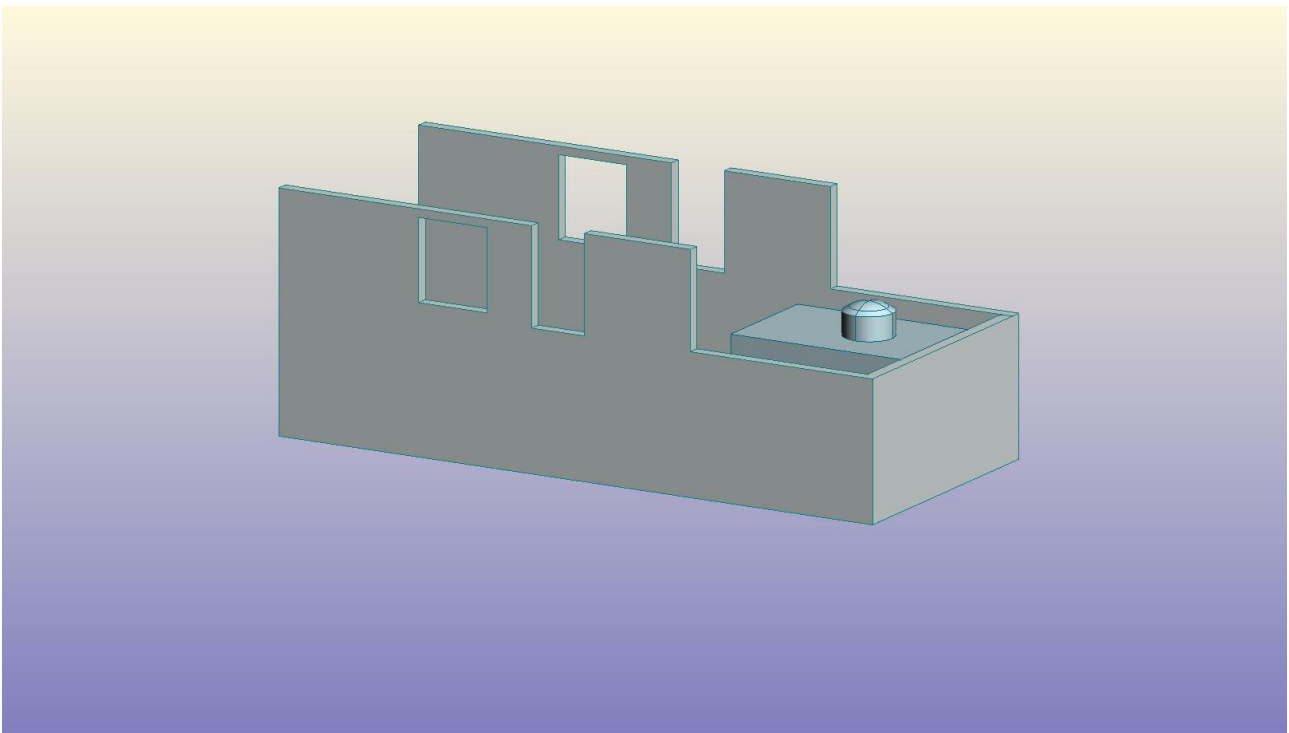
Over their service, these engines have carried several liveries. It is recommended you choose your prototype and paint it appropriately.

# Please Turn over

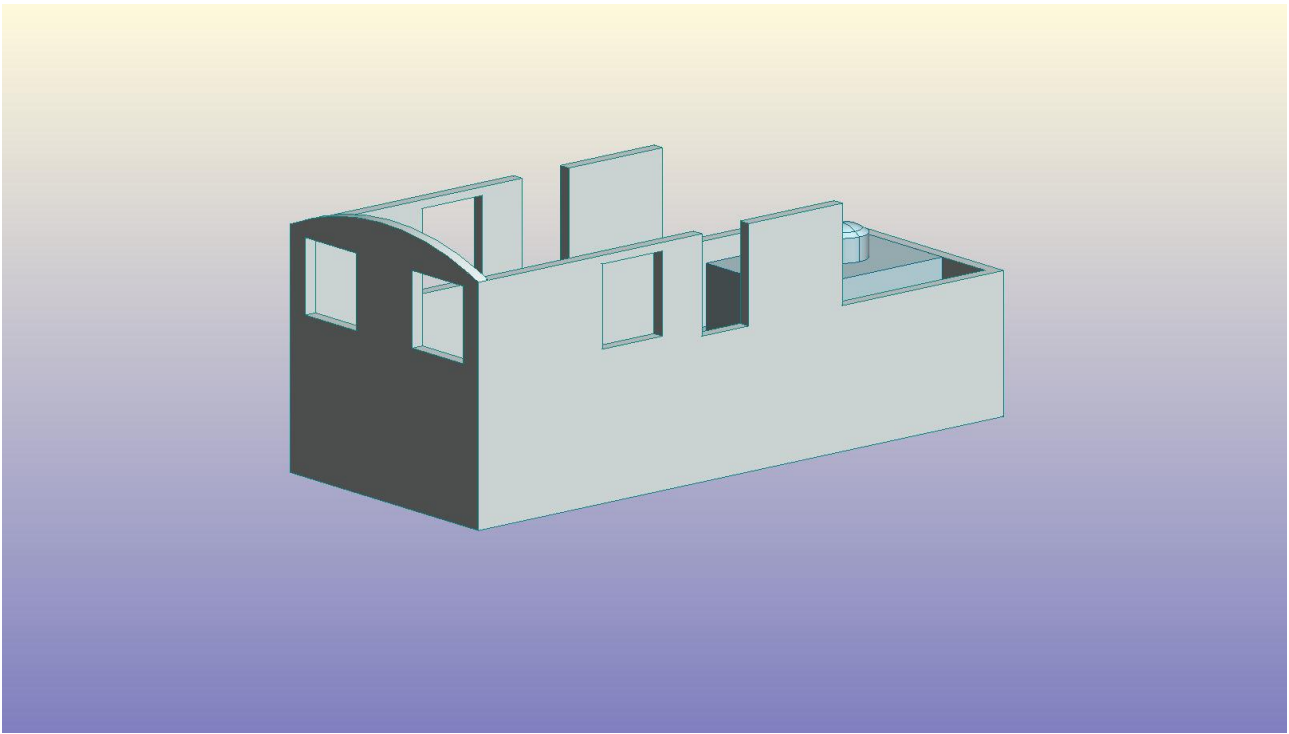
Please read though these instructions before beginning to assemble your  
kit



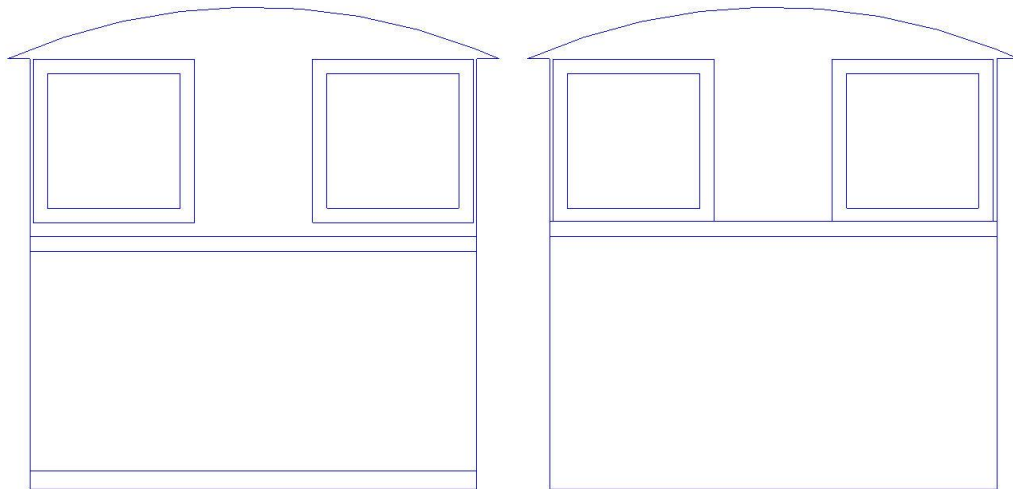
*To start assembly of the Sentinel, we recommend starting the cab and bunker. Start by gluing the bunker rear onto the 3D printed part provided.*

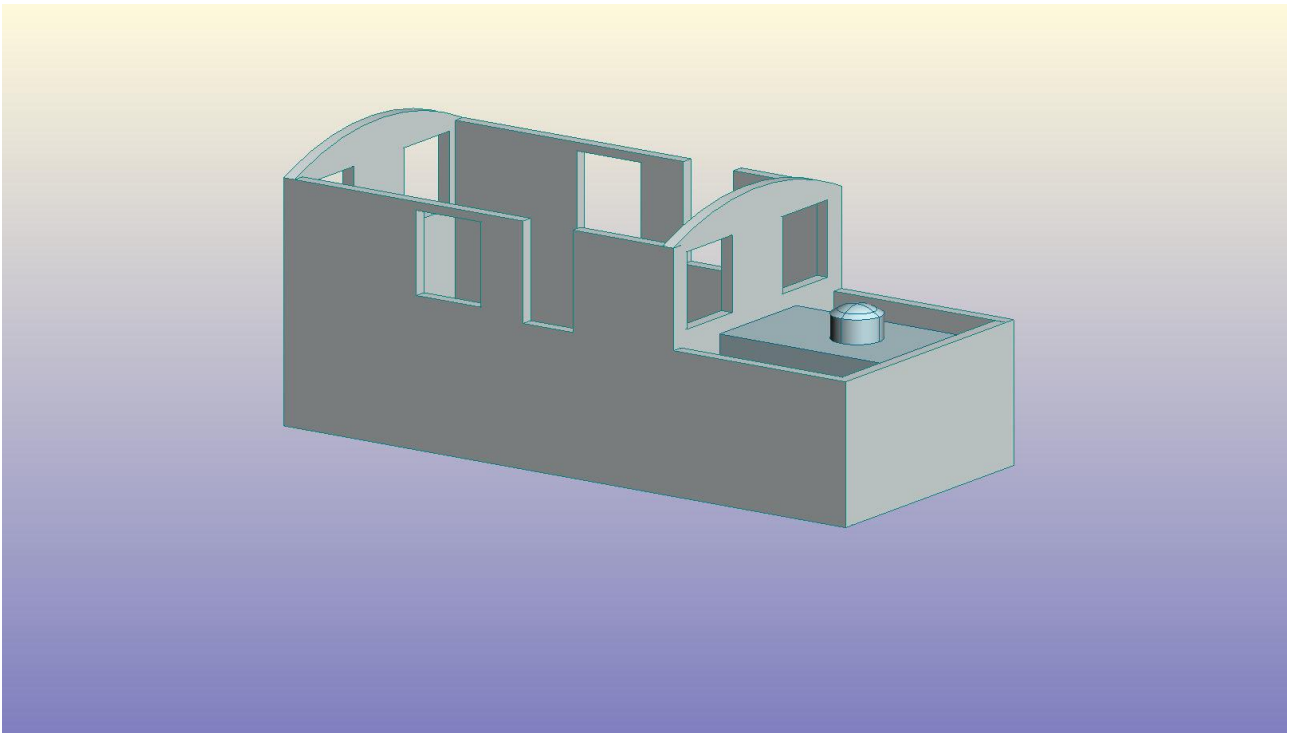


*Then, glue on the cab sides onto the bunker.*

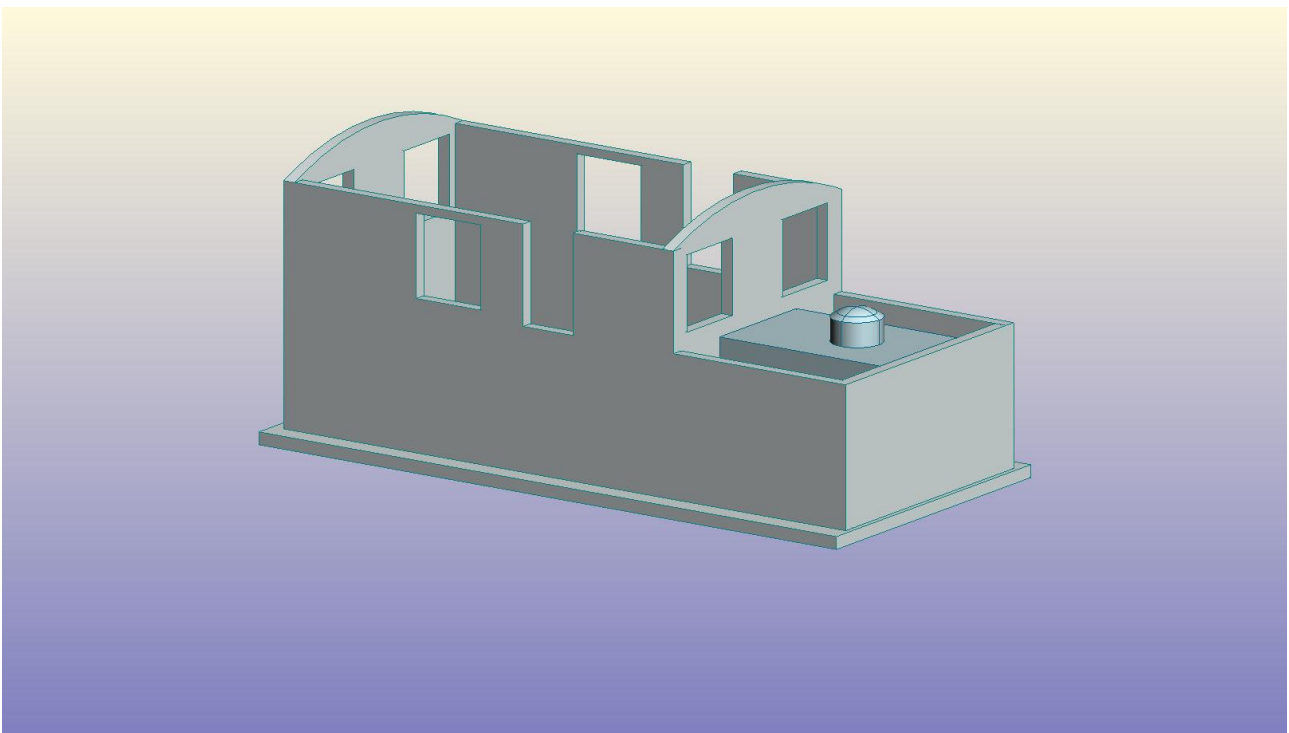


*Now glue on the cab front to the model. For reference (see below), the piece on the left is the front of the cab.*

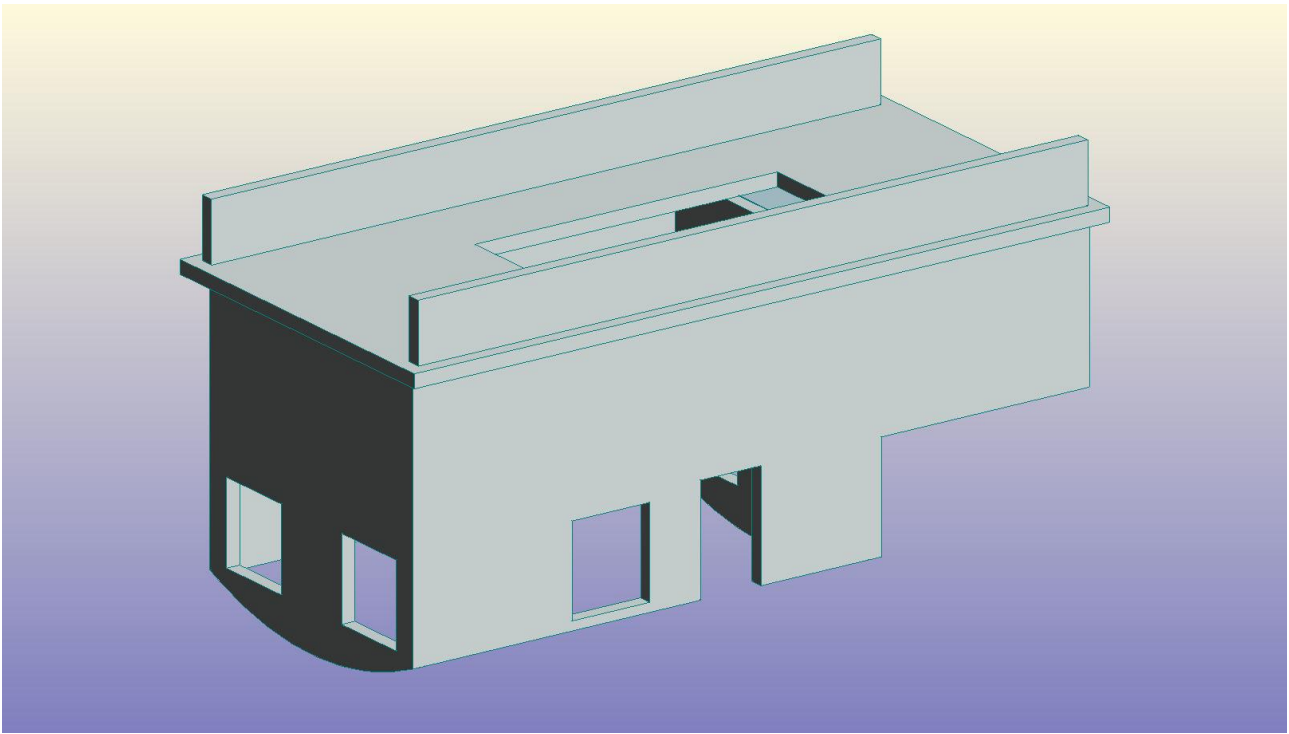




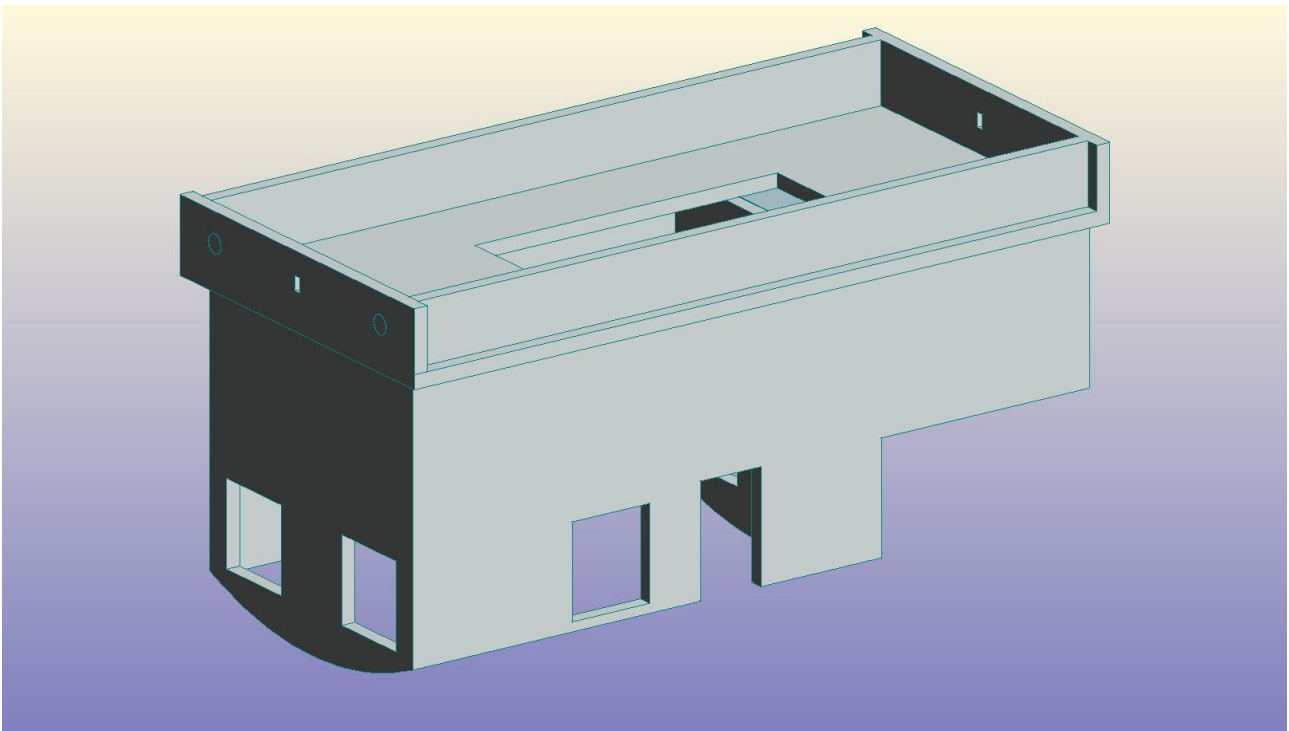
*Now glue in the rear of the cab.*

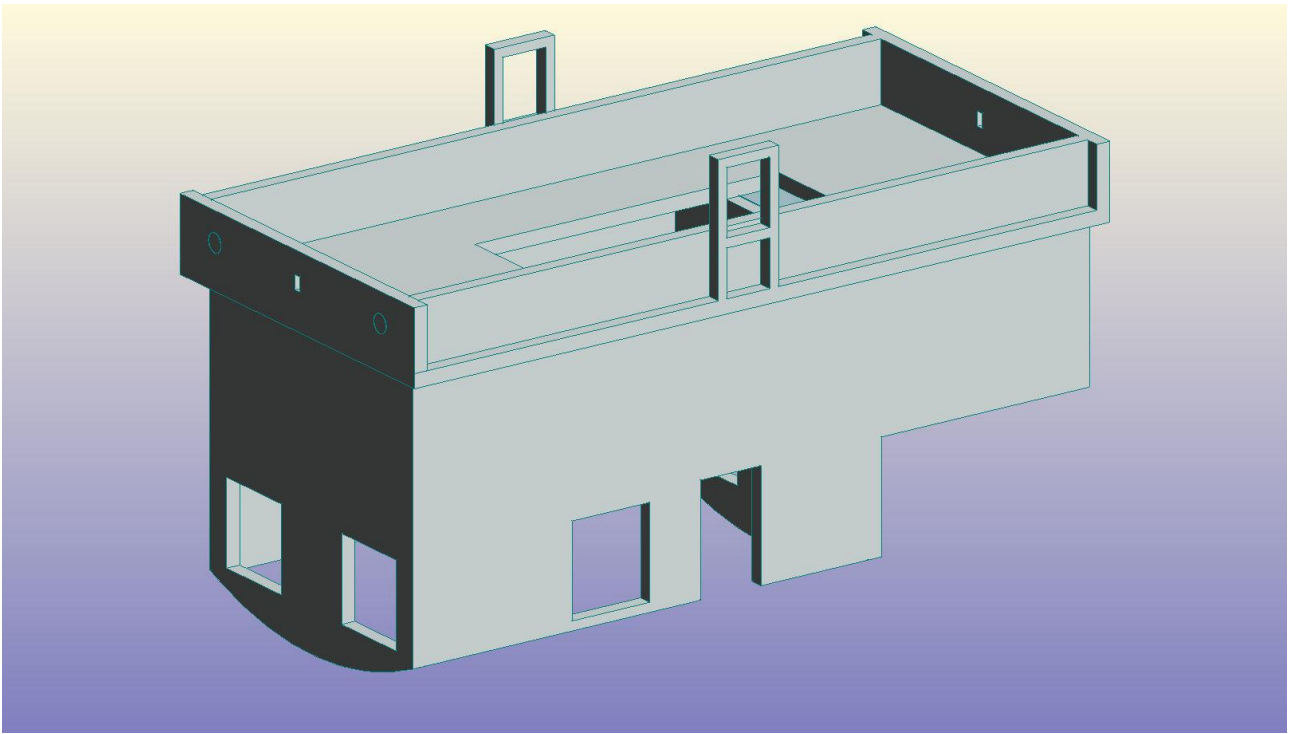


*Time to start assembly of the chassis. Glue the cab/bunker onto the chassis plate. This sits in the middle of the chassis plate.*

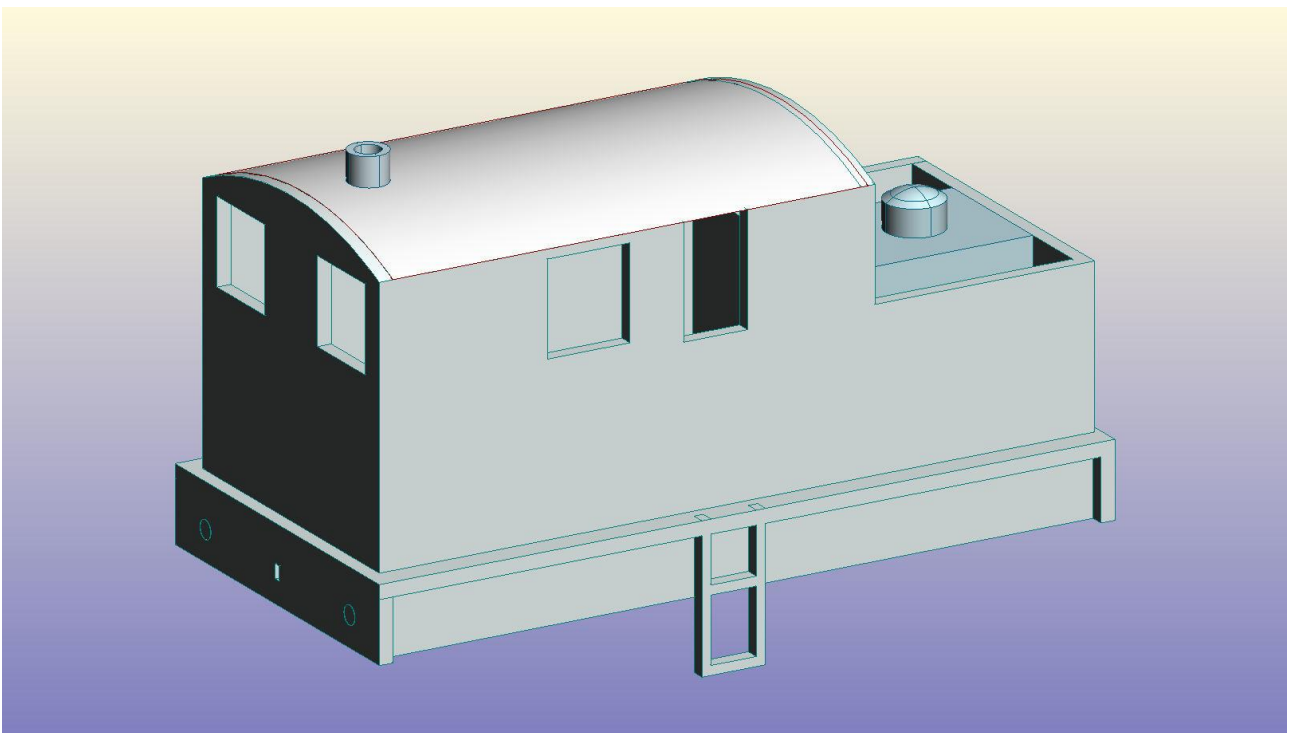


*Now glue on the sides and bufferbeams onto the bottom. We recommend starting with the bufferbeams (which go at each end of the model) and then gluing the side pieces in. For reference, these sit 3mm inside of the edge of the model side.*

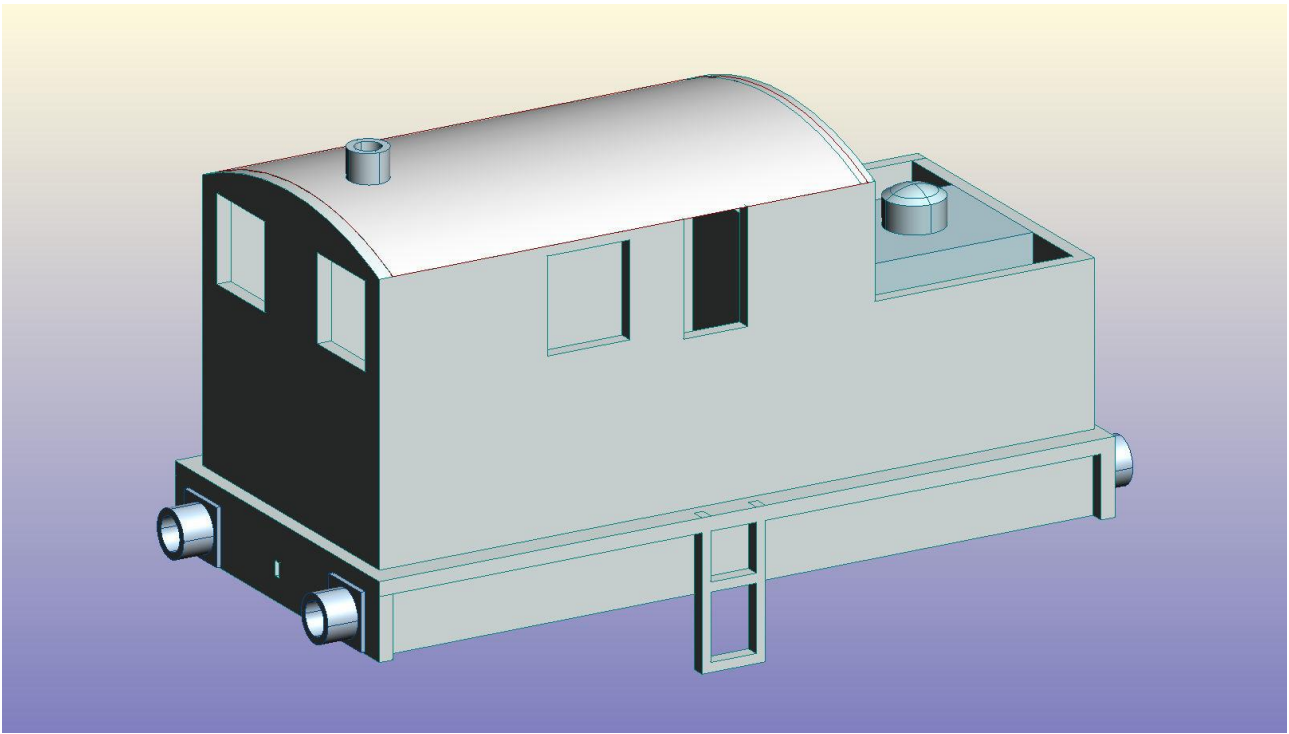




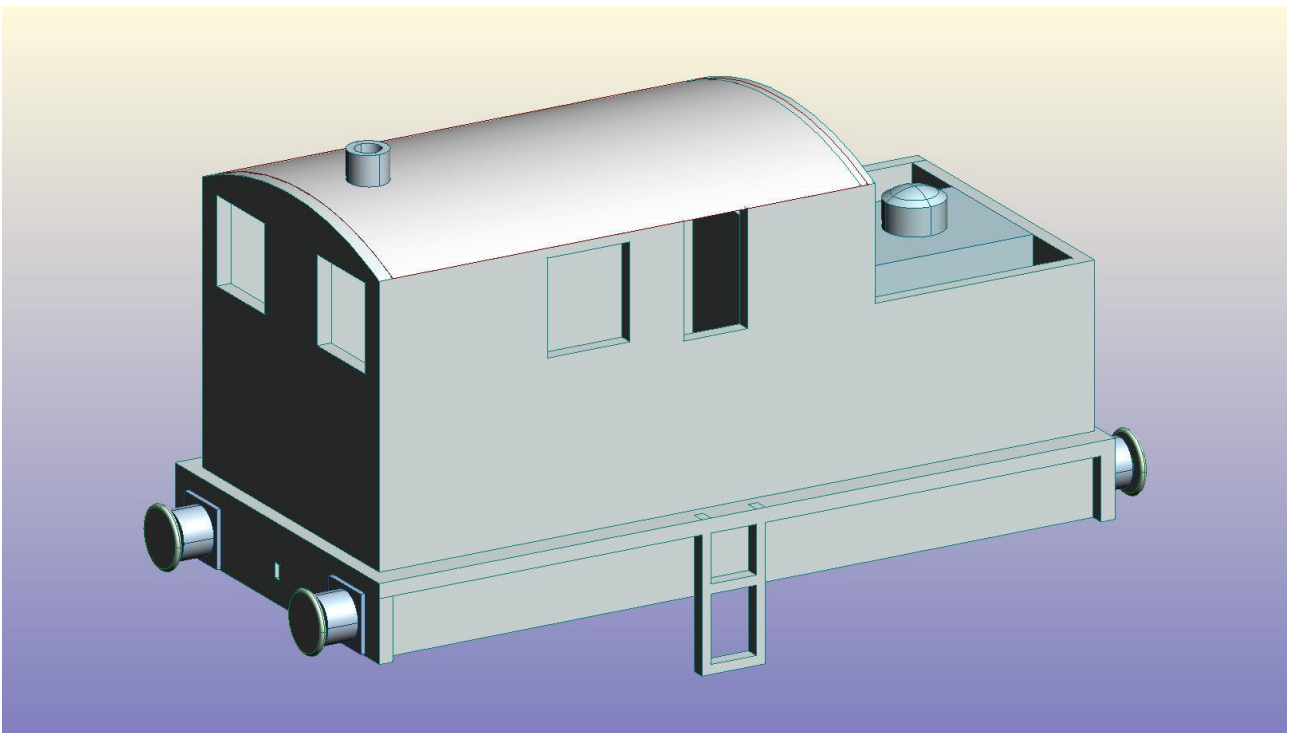
*Now, glue on the cab steps onto the side of the chassis.*



*To finish the body, you can assemble the cab roof by gluing the chimney onto the roof. We recommend leaving this loose as it will give access to the battery compartment within the cab.*



*Now glue on the buffer housings onto the bufferbeams over the etched marks on the beams themselves.*



*Now glue in the buffers into the housings. The couplings can then be slot in though the slot in the bufferbeam and held in place with their spring/split pin. The chassis can then be mounted using 4 of the Chassis spacers included in your kit. These are small rectangles with a small hole in the middle.*

*Your model is now complete.*





We hope you enjoy your Bowaters Models kit! If you have any questions, don't hesitate to contact us on [info@bowatersmodels.co.uk](mailto:info@bowatersmodels.co.uk)

We thank you for your custom.