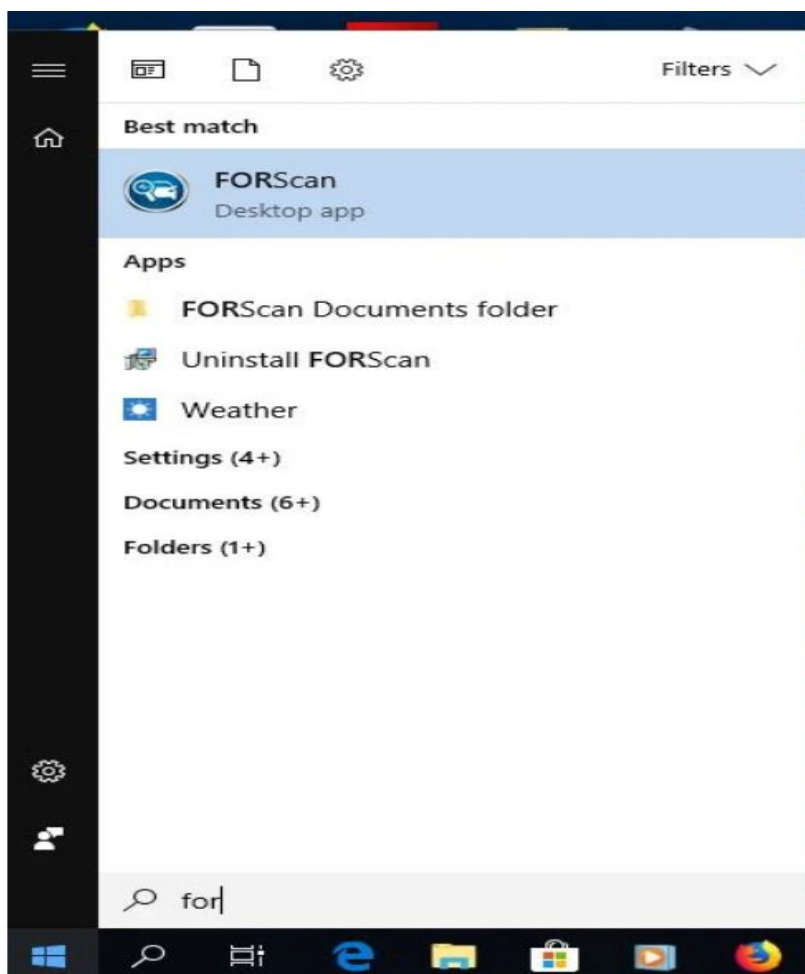


OHP BLUETOOTH DEVICE - INSTALLATION GUIDE

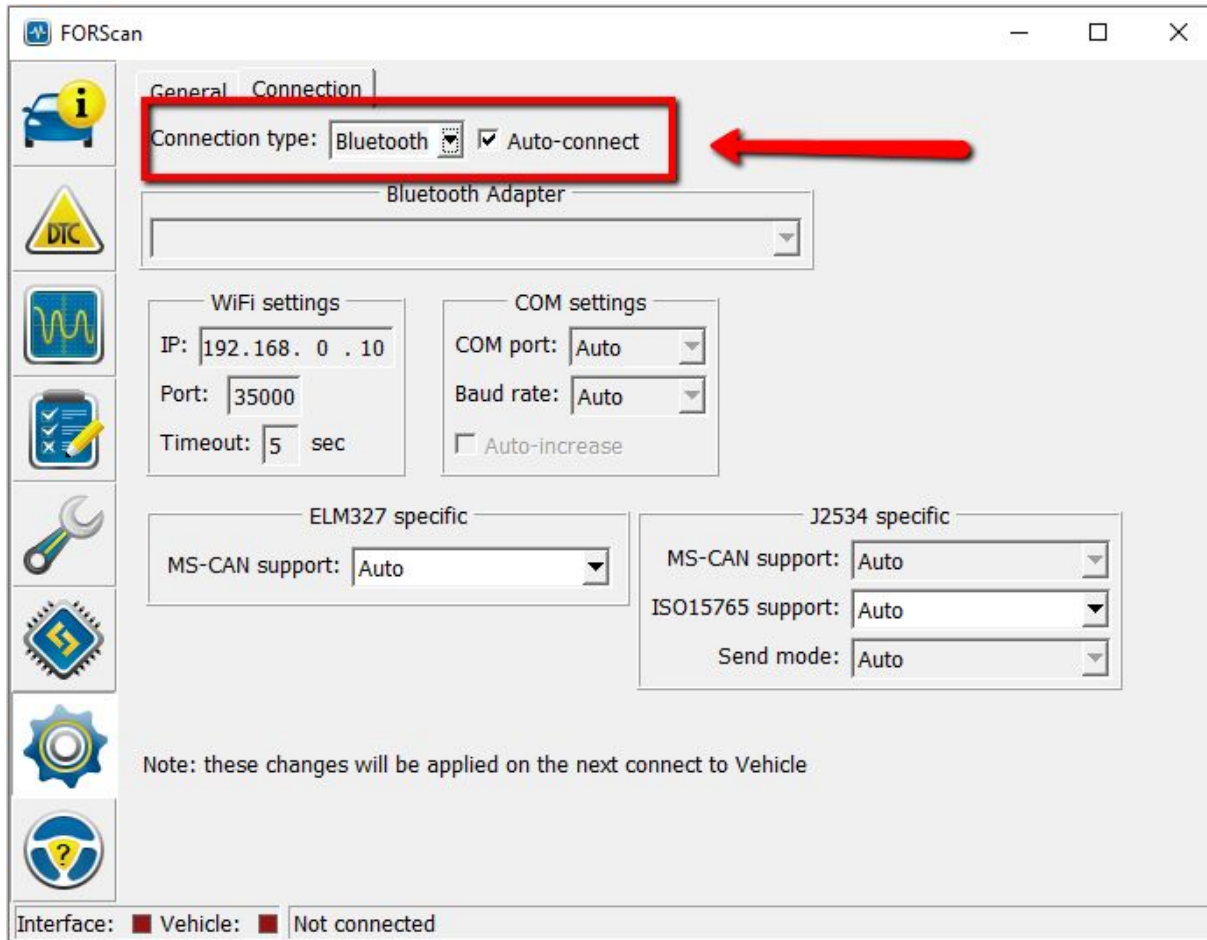
There are two ways to use and connect the OHP OBD2 Bluetooth device to your vehicle, one is to connect it via desktop/laptop/tablet Windows computer and the other one is via Android phone. Below are the steps on how to install the device:

I - Via Desktop/Laptop/Tablet Windows Computers

1. Plug the device into your vehicle's OBDII port.
2. Turn on the Bluetooth on your desktop/laptop/tablet Windows computer. Search and connect to available Bluetooth signal from the OBD2 device.
3. Download the FORScan software here: <https://forscan.org/download.html>. Then install it on your computer.
4. Open the FORScan software.



5. Go to Settings and select Bluetooth under the Connection tab. Make sure to check the Auto-connect box.



6. All set. You are good to go.

II - Via Android Phones

1. Plug the device into your OBDII port.
2. Open Phone settings, turn on Bluetooth and check and connect to available Bluetooth network from the OBD2 device.
3. Download and install the FORScan Lite phone app. Download the app at Google Play Store.

FORScan Lite
Alex Savin Tools
★ ★ ★ ★ ★ 1,971
3+
⚠ You don't have any devices.
Add to Wishlist

Information
information about vehicle and interface

Log
Check log of operations

Errors
Diagnostic trouble codes

Table
View PIDs in Table mode

Dashboard
View PIDs in Dashboard mode

Graph
View PIDs in Graph mode

Vehicle

Model: **Ford Focus**
Engine: Zetec
Capacity: 1.8L
Generation: 2002 MY
Fuel: Gasoline
Transmission gear: Manual
VIN: FORSCAN

IC - Instrument Cluster
Bus: PWM
Part number: WM5F-10849-CK
Software version: v1 2004-01-28

PCM - Powertrain Control Module
Bus: PWM

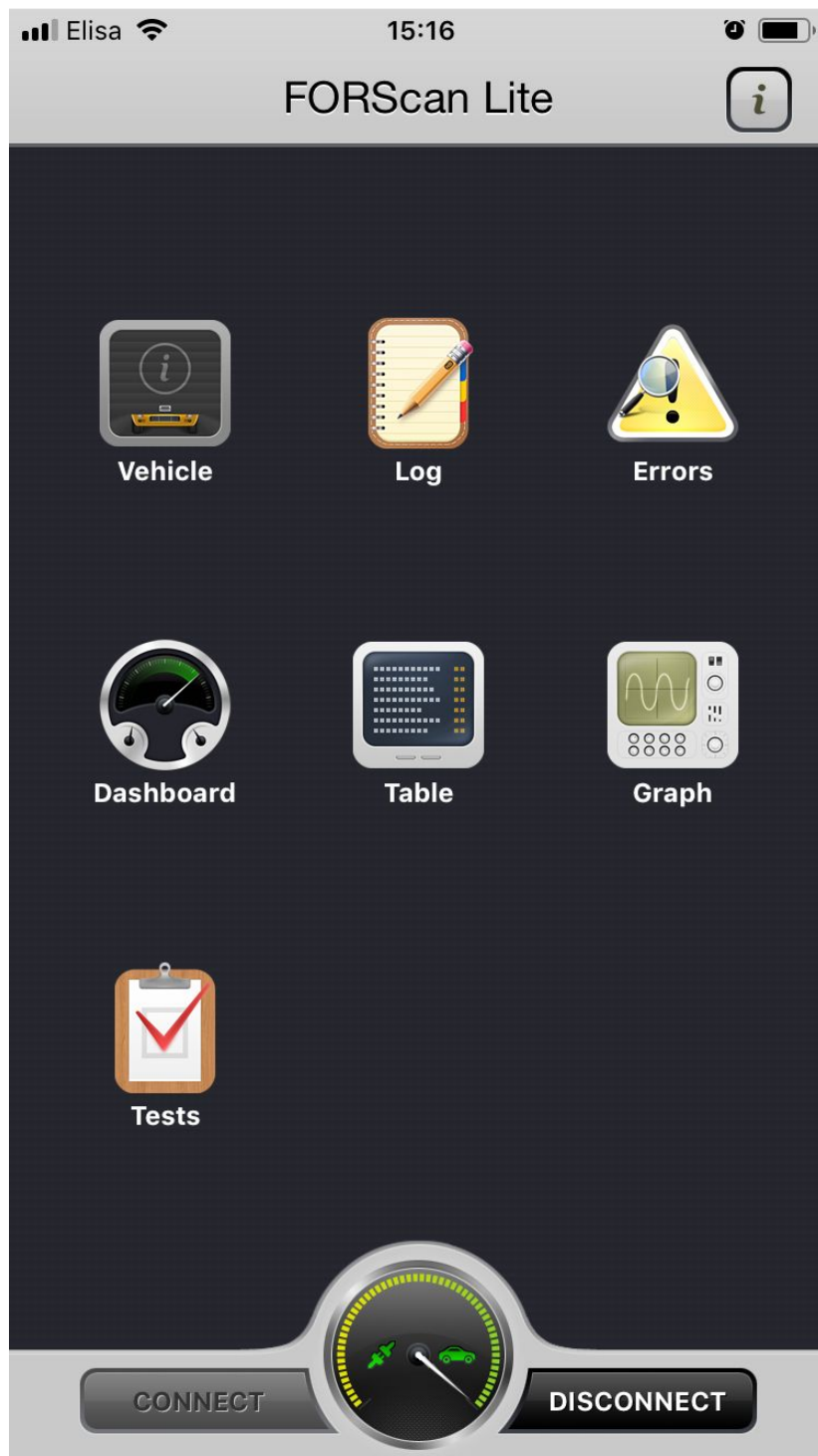
EATC - Electronic Automatic Temperature Control
Bus: ISO
Part number: 2S4H-18C612-BJ
Software version: v1 2004-01-28

MC - Message Center

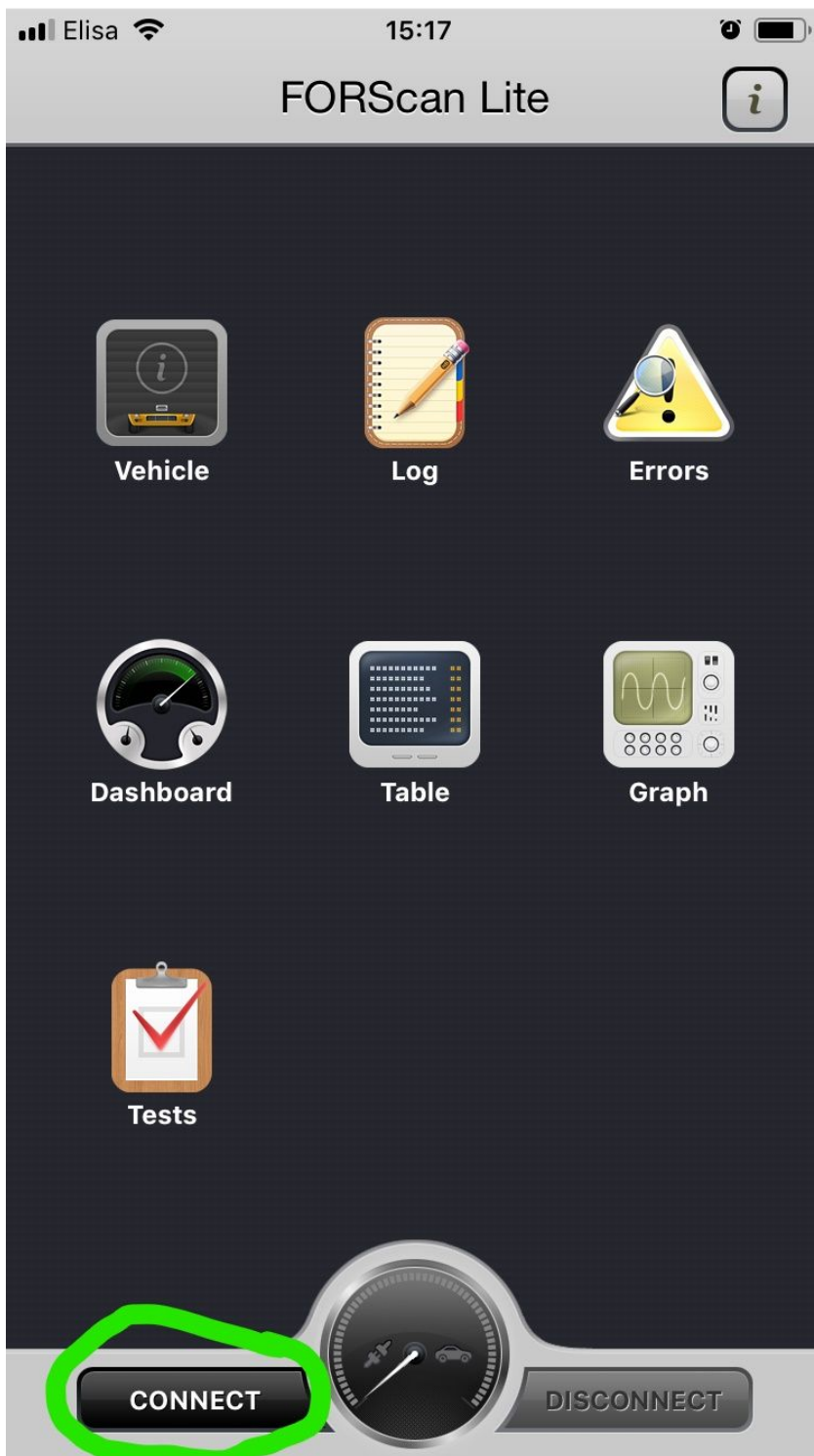
Log

- ✓ [14:04:44.659] ABS - Anti-Lock Brake / Traction Control Module
- ▲ [14:04:44.583] DTCs in GEM: B1244, B2256, B1428
- ✓ [14:04:44.541] GEM - Generic Electronic Module
- ▲ [14:04:44.328] DTCs in RCM: B1994, B1877, B1318
- ✓ [14:04:44.293] RCM - Restraint Control Module
- ▲ [14:04:44.201] DTCs in MC: B1318
- ✓ [14:04:44.167] MC - Message Center
- ▲ [14:04:44.106] DTCs in EATC: B2308
- ✓ [14:04:44.072] EATC - Electronic Automatic Temperature Control
- ▲ [14:04:43.994] DTCs in PCM: P0460, P0113, P0602, P0174, P0443
- ✓ [14:04:43.943] PCM - Powertrain Control Module
- ▲ [14:04:43.940] DTCs in IC: U1262
- ✓ [14:04:43.907] IC - Instrument Cluster
- ✓ [14:04:43.941] Ford Focus Zetec 1.8L 2002 MY

4. Open FORScan Lite phone app.



5. Using the FORScan Lite phone app, push connect to the vehicle.



6. All set. You are good to go.

***Note:** You **CANNOT** apply configurations, programming functions, and some service procedures using FORScan Lite. Use the FORScan software instead of using Windows laptop, desktop computer, or tablet if you wish to do so.