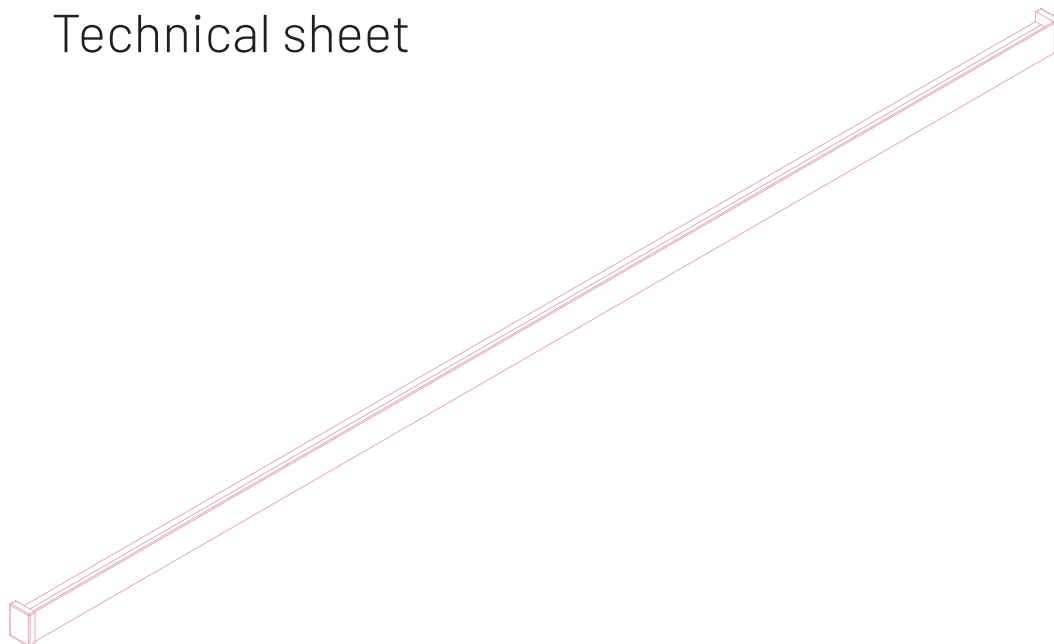


---

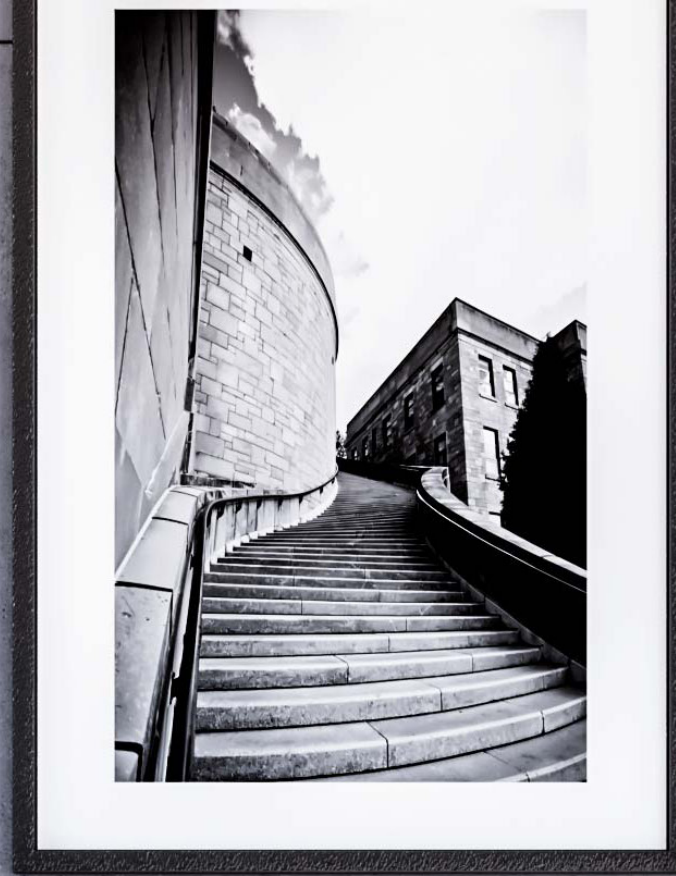
# Rise

Scheda tecnica  
Technical sheet



**Damiano Latini s.r.l.**  
Via Tangenziale 14/16,  
62010 - Montecosaro (MC)  
email: [info@damianolatini.it](mailto:info@damianolatini.it)  
P.IVA 01410060436

---







## RISE

Rise somma funzionalità ed eleganza, grazie al suo design minimalista. Si compone di diversi accessori che permettono di personalizzare la barra e integrarla all'ambiente di utilizzo. Estremamente versatile ed elegante ottimizza gli spazi e senza rinunciare all'estetica del design.

Rise adds functionality and elegance, thanks to its minimalist design. It consists of several accessories that allow you to customize and integrate it into the environment of use. Extremely versatile and elegant, it optimizes spaces without renouncing the design.







# RISE

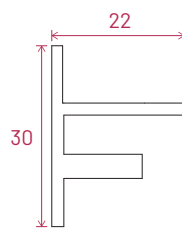
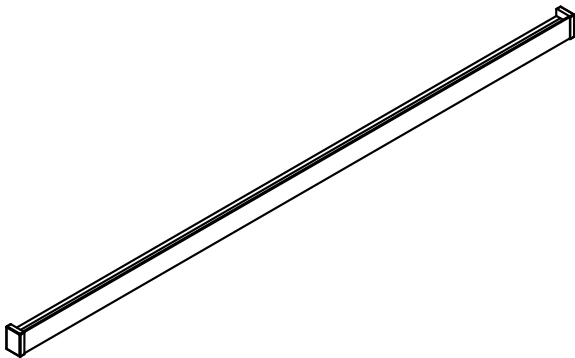
Materiale / Materials  
Alluminio / Aluminium



	<b>RISE 900</b>	<b>RISE 1200</b>	<b>RISE 3100</b>
Kg.	0.4	0.55	1.5
L cm	90.0	120.0	310.0
H cm	3.0	3.0	3.0
P cm	2.3	2.3	2.3

## FINITURE / FINISHES

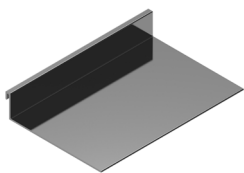
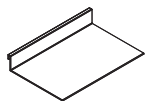
-  RAL 7016
-  Bianco / White



u = mm

Mensola / Shelf

Materiale / Materials  
Alluminio / Aluminum

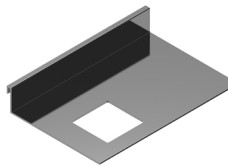
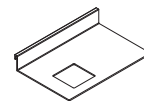


RISE-SH

Kg.	0.37
L cm	20.0
H cm	3.2
P cm	13.5

Mensola / Shelf

Materiale / Materials  
Alluminio / Aluminum

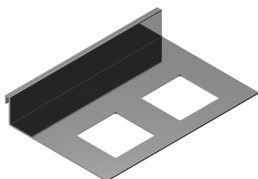
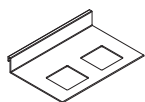


RISE-SH1

Kg.	0.35
L cm	20.0
H cm	3.2
P cm	13.5

Mensola / Shelf

Materiale / Materials  
Alluminio / Aluminum

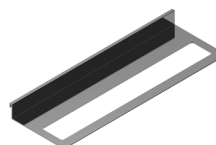
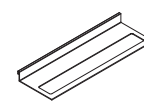


RISE-SH2

Kg.	0.33
L cm	20.0
H cm	3.2
P cm	13.5

Porta salviette / Towel bar

Materiale / Materials  
Alluminio / Aluminum

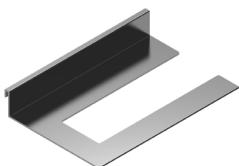
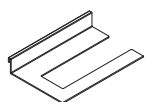


RISE-TH

Kg.	0.27
L cm	40.0
H cm	3.2
P cm	13.5

Portarotolo / Roll holder

Materiale / Materials  
Alluminio / Aluminum

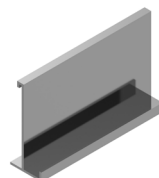
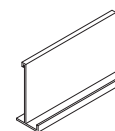


RISE-RH

Kg.	0.30
L cm	20.0
H cm	3.2
P cm	13.5

Porta tablet / Tablet holder

Materiale / Materials  
Plexiglass / Plexiglas

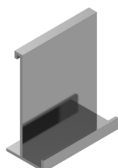
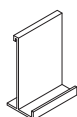


RISE-PT

Kg.	0.41
L cm	24.6
H cm	15.0
P cm	9.1

Porta cellulare / Phone holder

Materiale / Materials  
Plexiglass / Plexiglas

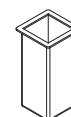


RISE-PC

Kg.	0.20
L cm	12.0
H cm	15.0
P cm	9.1

Bicchieri / Tumbler holder

Materiale / Materials  
Acciaio / Steel

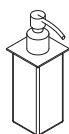


RISE-TH

Kg.	0.36
L cm	6.0
H cm	12.2
P cm	6.0

Dispenser / Dispenser

Materiale / Materials  
Acciaio / Steel



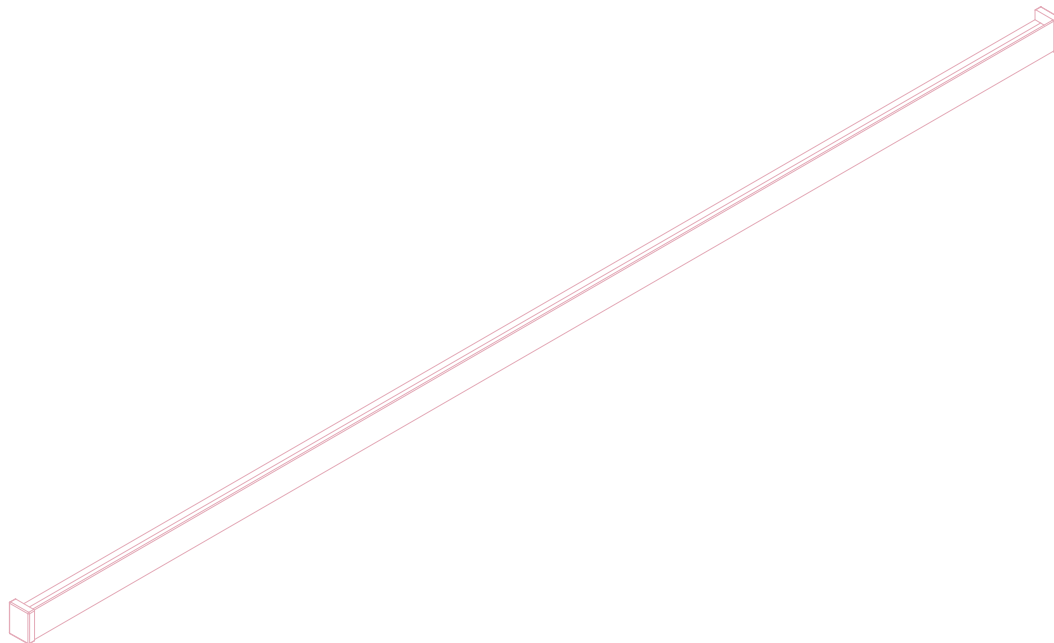
RISE-DI

Kg.	0.58
L cm	6.0
H cm	17.5
P cm	6.0

---

# Rise

Scheda di montaggio  
Assembly instructions



Damiano Latini s.r.l.  
Via Tangenziale 14/16,  
62010 - Montecosaro (MC)  
email: [info@damianolatini.it](mailto:info@damianolatini.it)  
P.IVA 01410060436

---

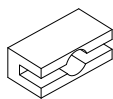


# Rise

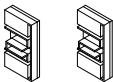
## Materiale | Materials

**A** Vite da muro + tassello  
Self-tapping screws +  
wall plug  
N.2 pcs (4 x 25 mm)

**B** Grani a testa esagonale  
Hexagonal head grains  
N.4 pcs (5 x 5 mm)



Attaccaglia per muro  
Wall holder profile  
N.2 pcs (14 x 10 mm)



Elementi di chiusura  
Closing element  
N.2 pcs



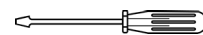
Profilo in alluminio  
Aluminium profile  
N.1 pcs

## Strumenti necessari | Required tools

Trapano | Drill



Cacciavite a croce |  
Phillips Screwdriver



Chiave a brugola |  
Allen key




This is in the box!

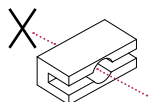
Punta trapano | Drill bit



### 1 Prendere le misure | Mark measures

Segnare a muro dove forare.

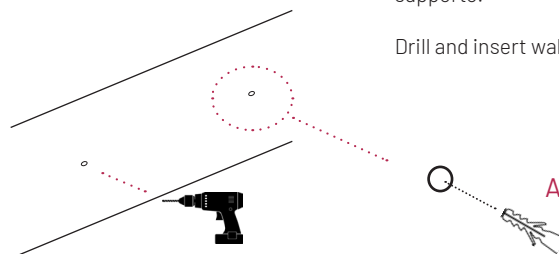
 Mark on the wall where to drill.



### 2 Forare il muro | Drill the wall

Forare ed inserire il  
supporto.

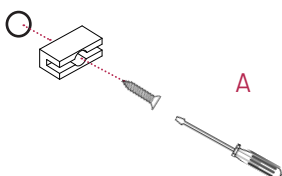
Drill and insert wall plug.



### 3 Avvitare l'attaccaglia | Screw holder profile

 Infilare **TUTTE** le viti e distanziali nel  
Back, per poi spingerlo a muro.

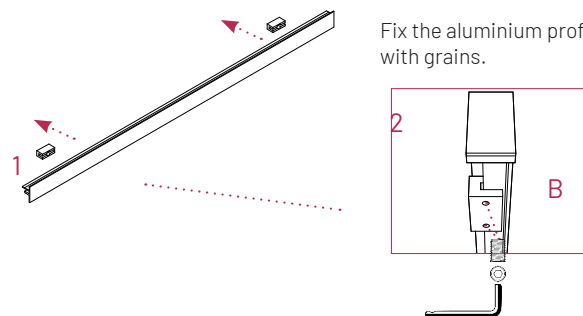
Predisporre **ALL** screws and wall  
spacers on Back, then fit on wall.




### 4 Avvitare alla parete | Screw into the wall

Fissare il profilo con i grani.

Fix the aluminium profile  
with grains.



### 5 Montare i tappi | Fit closing element

 Incastrare gli elementi di chiusura  
alle estremità.

Fit closing elements to edges.

