

nubia Z50S Pro

Quick Start Guide

LEGAL INFORMATION

Copyright © 2023 Nubia Technology Co., Ltd.

All rights reserved.

All the copyrights of this document herein belong to Nubia Technology Co., Ltd. Without the written permission of copyright owner, no part of this publication may be excerpted, reproduced, translated by any person or entity in any form or by any means.

This document is subject to change without prior notice.

Nubia Technology Co., Ltd. keeps the right to make the final explanation to this document.

Disclaimer

Nubia Technology Co., Ltd. expressly disclaims any liability for faults and damages caused by unauthorized modifications of the software.

Images and screenshots used in this guide may differ from the actual product. Content in this guide may differ from the actual product or software.

Trademarks

Android™ is a trademark of Google LLC.

The *Bluetooth*® word mark and logos are registered trademarks owned by the Bluetooth SIG, Inc. and any use of such marks by ZTE Corporation is under license.



For DTS patents, see <http://patents.dts.com>. Manufactured under license from DTS, Inc. (for companies headquartered in the U.S./Japan/Taiwan) or under license from DTS Licensing Limited (for all other companies). DTS, DTS:X, DTS:X Ultra, and the DTS:X logo are registered trademarks or trademarks of DTS, Inc. in the United States and other countries. © 2021 DTS, Inc. ALL RIGHTS RESERVED.



Wi-Fi CERTIFIED 6™ and the Wi-Fi CERTIFIED 6™ Logo are trademarks of Wi-Fi Alliance®.



**Snapdragon
sound**

Snapdragon Sound is a product of Qualcomm Technologies, Inc. and/or its subsidiaries.

Snapdragon and Snapdragon Sound are trademarks or registered trademarks of Qualcomm Incorporated.



Leading Version

Snapdragon is a product of Qualcomm Technologies, Inc. and/or its subsidiaries.

licensed by
Qualcomm

This product implements certain patented technologies licensed by Qualcomm Incorporated.

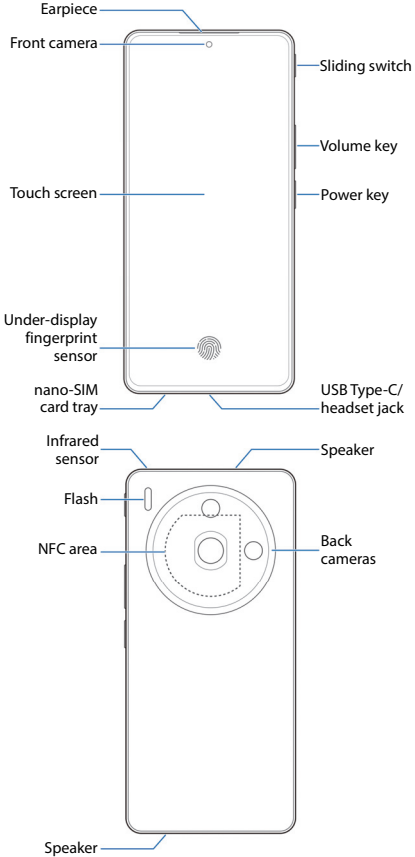
Qualcomm and the Licensed by Qualcomm logo are trademarks or registered trademarks of Qualcomm Incorporated.



Covered by one or more claims of the HEVC patents listed at patentlist.accessadvance.com

Other trademarks and trade names are those of their respective owners.

Getting to Know Your Phone



Your phone supports 2.4 GHz and 5 GHz Wi-Fi.

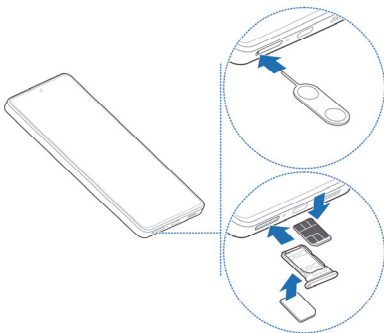
Setting Up Your Phone

The nano-SIM cards can be installed or removed while the phone is turned on.

WARNING!

To avoid damage to the phone, do not use any other kind of SIM cards, or any non-standard nano-SIM card cut from a SIM card. You can get a standard nano-SIM card from your service provider.

1. Insert the tip of the tray eject tool into the hole on the card tray.
2. Pull out the card tray and place the nano-SIM card(s) into the card slot(s) as shown. Carefully slide the tray back into place.



NOTE:

Please use the tray eject tool included in the box. Otherwise the card tray may not be ejected.

CAUTION:

Never replace the included tray eject tool with sharp objects. Ensure that the tray eject tool is perpendicular to the hole. Otherwise, the phone may be damaged.

NOTE:

If two nano-SIM cards are installed, both cards can connect to the 5G network, and you can use either card for mobile data.

Charging the Phone

Your phone's battery should have enough power for the phone to turn on, find a signal, and make a few calls. You should fully charge the battery as soon as possible.

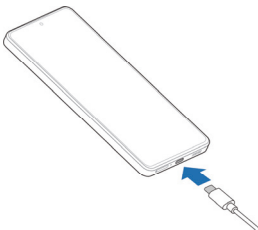
WARNING!

Use only ZTE-approved chargers and USB Type-C cables. The use of unapproved accessories could damage your phone or cause the battery to explode.

WARNING!

Do not remove the back cover. The battery is not removable. Removal may cause fire or explosion.

1. Connect the adapter to the charging jack.





2. Connect the charger to a standard AC power outlet.
3. Disconnect the charger when the battery is fully charged.

NOTE:

If the battery is extremely low, you may be unable to power on the phone even when it is being charged. In this case, try again after charging the phone for at least 20 minutes. Contact the customer service if you still cannot power on the phone after prolonged charging.

Powering On/Off Your Phone

Make sure the battery is charged before powering on.

- Press and hold the **Power** key to turn on your phone.
- To power off, press and hold the **Power** key until the power off/restart menu appears, and then touch  > .

NOTE:

If the screen freezes or takes too long to respond, try pressing and holding the **Power** key for over 10 seconds to restart the phone.

Waking Up Your Phone

Your phone automatically goes into sleep mode when it is not in use for some time. The display is turned off to save power and the keys are locked to prevent accidental operations.

You can wake up your phone by turning on the display and unlocking the keys.

1. Press the **Power** key to turn the screen on.
2. Swipe up on the screen.

NOTE:

If you have set a face verification, a fingerprint, an unlock pattern, a PIN or a password for your phone, you'll need to use your face or fingerprint, draw the pattern, or enter the PIN/password to unlock your screen.

Lowering Blue Light




Blue light with wavelengths between 415 nm and 455 nm is considered harmful for the eyes. It may cause eye discomfort, suppress melatonin, and affect sleep quality and circadian rhythm. This product has the function of reducing blue radiant energy.

To avoid eye fatigue, it is recommended to place the product at an appropriate distance from your eyes and rest for 20 minutes to look into the distance after two hours of continuous viewing.


To enable eye protection, open the **Settings** app and touch **Display > Night Light > Turn on now**. Use **Turn on automatically** to enable eye protection between sunset and sunrise or during customized time. In addition, you can adjust the protection effect by changing the blue light filter and white point reduction levels.

Product Safety Information

	Don't make or receive phone calls while driving. Never text while driving.
	Keep your phone at least 5 mm away from your body while making calls.
	Small parts may cause choking.
	Your phone can produce a loud sound.
	To prevent possible hearing damage, do not listen at high volume levels for long periods. Exercise caution when holding your phone near your ear while the loudspeaker is in use.
	Avoid contact with anything magnetic.
	Keep away from pacemakers and other electronic medical devices.
	Turn off when asked to in hospitals and medical facilities.
	Turn off when told to on aircraft and at airports.
	Turn off when near explosive materials or liquids.
	Don't use at gas stations.
	Your phone may produce a bright or flashing light.
	Don't dispose of your phone in fire.
	Avoid extreme temperatures.
	Avoid contact with liquids. Keep your phone dry.
	Do not attempt to disassemble your phone.

	<p>Only use approved accessories.</p>
	<p>For pluggable equipment, the socket-outlet shall be installed near the equipment and shall be easily accessible.</p>
	<p>Don't rely on your phone as a primary device for emergency communications.</p>

Disposal of Your Old Appliance

	<ol style="list-style-type: none"> 1. When this crossed-out wheeled bin symbol is attached to a product, it means the product is covered by the European Directive 2012/19/EU. 2. All electrical and electronic products should be disposed of separately from the municipal waste stream via designated collection facilities appointed by the government or the local authorities. 3. The correct disposal of your old appliance will help prevent potential negative consequences for the environment and human health.
---	---

For this product's recycling information based on WEEE directive, please send an e-mail to weee@zte.com.cn