

10FT X 7.5FT LUMIÈRE LIGHT WALL®

LUMIÈRE LIGHT WALL®

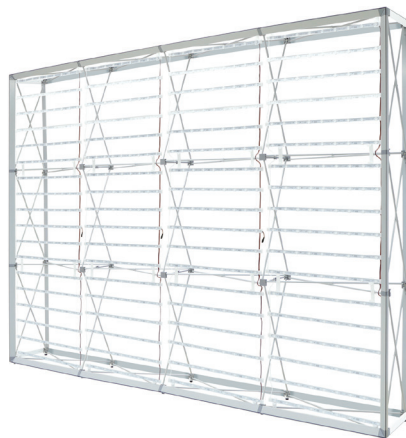
PRODUCT CODE: LLW4X3



On frame On graphic



Graphic Endcaps (Optional)



Frame



Channel Bars on Frame



Ladder Lights

PRODUCT DESCRIPTION

Illuminate your message with the Lumiere Light Wall®! Lumiere ladder lights make backlit graphics pop on this innovative combo display of silicone-edge graphics and portable RPL fabric pop ups. Plus, the Lumiere shrinks down in size: simply collapse the geometric frame and the SEG bungeed channel bars, and fold or roll the fabrics graphics. Setup requires 1 person and 5-10 minutes. SEG portability is easy and stylish.

DISPLAY DIMENSION	117.75" W x 88.75" H x 14.5" D
--------------------------	--------------------------------

GRAPHIC DIMENSIONS

MAIN GRAPHIC	118.5" W x 89" H
END CAP GRAPHIC	14.25" W x 89" H

GRAPHIC MATERIAL

UV Backlit Fabric

GRAPHIC FINISHING

Silicone beading is sewn around the perimeter of the fabric graphic. Silicone beading is hidden from view once installed.

DISPLAY CONSTRUCTION

Aluminum Frame

LADDER LIGHTS SPECIFICATION

EACH LIGHT BEAD	1.0W
ANGLE	170°
OPERATING VOLTAGE	DC12V/24V
TOTAL WATTAGE	420W
TOTAL AMPERAGE	18A

MODULAR LED CURTAIN 30W KIT 1X4

POWER (W): 95	LM/ (W): 110	LM/ (W): 10450
----------------------	---------------------	-----------------------

TRANSFORMER SPECIFICATION

OUTPUT	24V/3.75A
INPUT	AC100-240V/1.3A

SHIPPING WEIGHTS & DIMENSIONS

Lumiere Ladder Lights - 4 Units	
Shipping Weight	29 lbs
Shipping Dimensions	14" L x 12.5" W x 32.5" H
Lumiere Light Wall	
Shipping Weight	31 lbs (frame only) 34 lbs (with graphics)
Shipping Dimensions	34" L x 14" W x 9" H

LARGE QUANTITY FREIGHT

Lumiere Ladder Lights	
Freight Shipping	30 boxes per 48" L x 40" W x 28.5" H skids
Freight Weight	168 lbs
Lumiere Light Wall	
Freight Shipping	15 boxes per 48" L x 40" W x 48" H skids
Freight Weight	372 lbs (frame only) 408 lbs (with graphics)

GRAPHIC TURN AROUND TIME

2 business days after proof approval

AVAILABILITY	CA and PA
---------------------	-----------

Please Note: Lumiere Ladder Light® sets are placed on the front side of the frame only. They are not double-sided and may not be used as so.

10FT X 7.5FT LUMIÈRE LIGHT WALL®

LUMIÈRE LIGHT WALL®

PRODUCT CODE: LLW4X3

AVAILABLE ACCESSORIES



La Caja Case



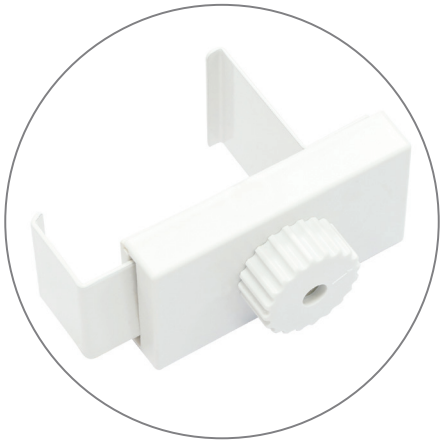
Genie Counter Case



Stabilization Feet



Straight Connector



L Link Connector



Internal Showcase



Lumiere Jumper Cable*

*Note: Lumiere Jumper Cable is used to connect the Lumiere Ladder Lights between the Internal Showcase.

10FT X 7.5FT LUMIÈRE LIGHT WALL®

LUMIÈRE LIGHT WALL®

PRODUCT CODE: LLW4X3

PARTS LIST



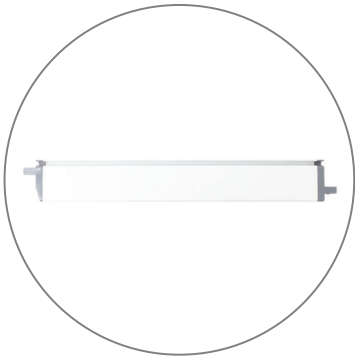
Qty 1 - Pop Up Frame



Qty 4 - 3 Section Channel Bars



Qty 4 - 4 Section Channel Bars



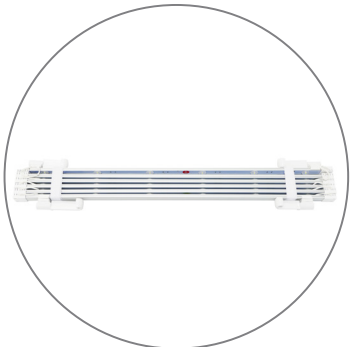
Qty 4 - End Cap Channel Bars



Qty 1 - Carry Bag



Qty 1 - Channel Bar Bag



Qty 12 - Ladder Lights



Qty 4 - Transformer



Qty 4 - Transformer Power Cord



Qty 4 - Ladder Light
Travel Bag

10FT X 7.5FT LUMIÈRE LIGHT WALL®

LUMIÈRE LIGHT WALL®
PRODUCT CODE: LLW4X3

SCAN FOR
VIDEO SET UP

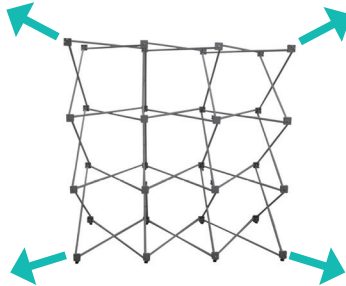


SET UP INSTRUCTIONS 1/2

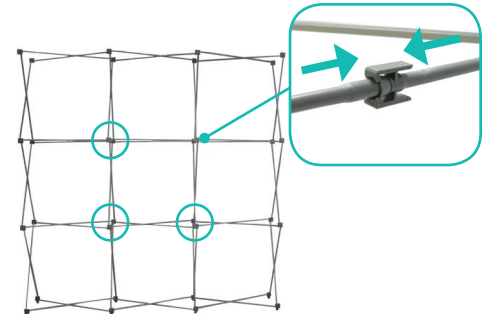
Set Up Pop Up Frame



a. Place frame with the adjustable feet facing down.

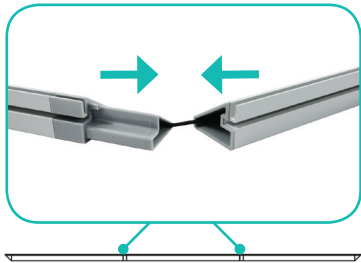


b. Expand the frame.

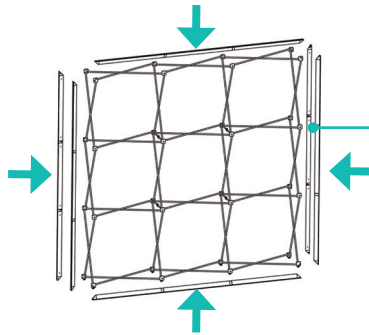


c. Close frame by pushing the outside of the frame until male and female ends connect.

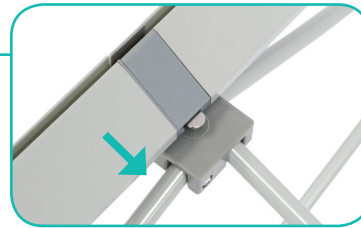
Insert Channel Bars



a. Expand each channel bar. Follow bungee to connect.



b. Attach channel bars to frame.



c. Slide channels bars onto frame, from top to bottom, then secure onto metal peg.



d. Attach the top and bottom end-caps on each side of the frame.

Unfold The Hooks



a. Locate each hook.



b. Turn each hook outward.



c. Twist each hook to face the front of the ladder light.

10FT X 7.5FT LUMIÈRE LIGHT WALL®

LUMIÈRE LIGHT WALL®

PRODUCT CODE: LLW4X3

SET UP INSTRUCTIONS 2/2

Hook Ladder Lights

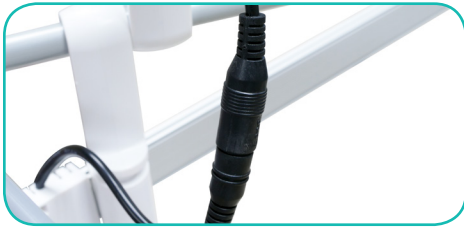


a. Hang ladder lights from top "x" bar. **Note:** Make sure to follow label that says "UP" or "DOWN".



b. Hang ladder lights in each section of the frame until reaching the bottom of the frame.

Connect Ladder Lights



a. Connect each ladder light together using the barrel connectors.



b. Connect bottom set of lights to the LED Driver using the barrel connectors



c. Insert power cord to the LED Driver. Plug other side into your main power outlet.

Install Graphic



a. In each corner, insert the silicone edge beading into the groove.



b. Then insert the remainder of the beading. Repeat blackout installation for the back frame.



c. Then repeat graphic installation on the end caps for each side.