

How to play

01.

Take care cutting out the clue cards on the next pages.

02.

Pick who is going to hide the clues and who is going to discover them.

This game works well if a grown-up hides the clues and little ones go on the adventure.

03.

The hider needs to pick the first clue (any card but the yay card).

04.

The object on the clue card is the location you will need to place the next clue you pick.

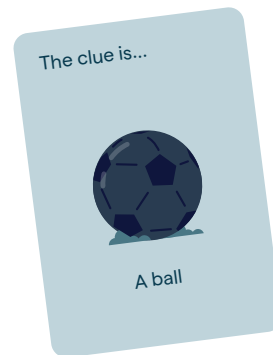
Follow this pattern until all of the cards have been hidden. (see below)

05.



The finish card is the yay card. Sometimes it can be nice to put some treasure such as a snack alongside this. However, We'll leave that up to you.

Example of how to hide the clues.



Example start card



Hide the next clue by a bush



Example next clue



Hide the next clue in a plant pot



Example next clue

The clue is...



A small plant pot

Copyright Pea Inc Ltd. All rights reserved.

The clue is...



A large plant pot

Copyright Pea Inc Ltd. All rights reserved.

The clue is...



A shed

Copyright Pea Inc Ltd. All rights reserved.

The clue is...



A welly boot

Copyright Pea Inc Ltd. All rights reserved.

The clue is...



A bush

Copyright Pea Inc Ltd. All rights reserved.

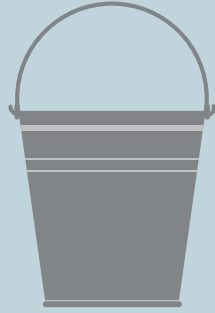
The clue is...



A watering can

Copyright Pea Inc Ltd. All rights reserved.

The clue is...



A bucket

Copyright Pea Inc Ltd. All rights reserved.

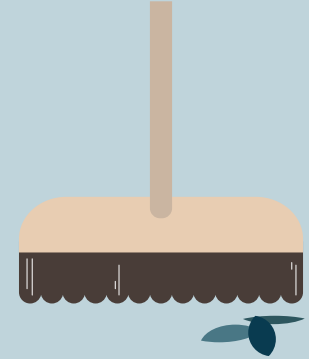
The clue is...



A ball

Copyright Pea Inc Ltd. All rights reserved.

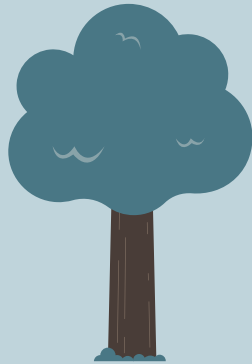
The clue is...



A broom

Copyright Pea Inc Ltd. All rights reserved.

The clue is...



A tree

Copyright Pea Inc Ltd. All rights reserved.

The clue is...



gardening gloves

Copyright Pea Inc Ltd. All rights reserved.



Finished


Copyright Pea Inc Ltd. All rights reserved.



Get creative.


To extend the game and add new hiding locations, we've added some blank clue cards for you to get creative.

The clue is...




Copyright Pea Inc Ltd. All rights reserved.

The clue is...




Copyright Pea Inc Ltd. All rights reserved.

The clue is...




Copyright Pea Inc Ltd. All rights reserved.

The clue is...




Copyright Pea Inc Ltd. All rights reserved.

The clue is...



Copyright Pea Inc Ltd. All rights reserved.

The clue is...



Copyright Pea Inc Ltd. All rights reserved.