

# OLIVIA MAY *zine*



**ISSUE 29**  
**APRIL 24**



The OM Zine is an interactive monthly publication from Olivia May. Stay up to date with all the latest news in fashion, styling, new arrivals and sale! See all your favourite designers & brands in one place, get inspired, and more with the OM Zine!

# WHAT'S INSIDE

**New Arrivals**

**Celestial**

**Beatrice B SS24**

**Editorial Highlight**

**Knitwear Care**

**New In: Accessories**

**Recent Editorials**

**April 2024  
Issue 29**

Explore springtime dressing, learn how to care for your favourite knitwear pieces, see the latest new arrivals to Olivia May this season and more in this brand new edition of the OM Zine. Keep reading to see the collection from Beatrice B and brand new accessory designer.

## OLIVIA MAY NEWS

**Front Cover Look-  
Celestial**

**Shop The Cover**

Get inspired with the brand new Spring/Summer collection from South Korean designer, SOH. See how we've styled their beautiful, subtle earthy tones with shoes from Lofina and jewellery from Angela Caputi in our editorial, online to read and shop now.



**Spring/Summer 24  
online now!**

**Shop New Arrivals**

Shop the brand new collections from top designers such as Rundholz Mainline, Dip and Black Label, Privatsachen, Mama B, Ewa I Walla, Album Di Famiglia, Magnolia Pearl, Elemenre Clemente and more! See brand new designers for SS24 like Lavi, Ecoalf, Via Mailbag, Aleksandr Manamis, High, Mei Meij, Sita Nevada and more!





# CELESTIAL

PHOTOGRAPHY Aurelija Karaliunaite MODEL Gabrielle Kusi Appiah STYLING Veneta Markova LOCATION Oxford

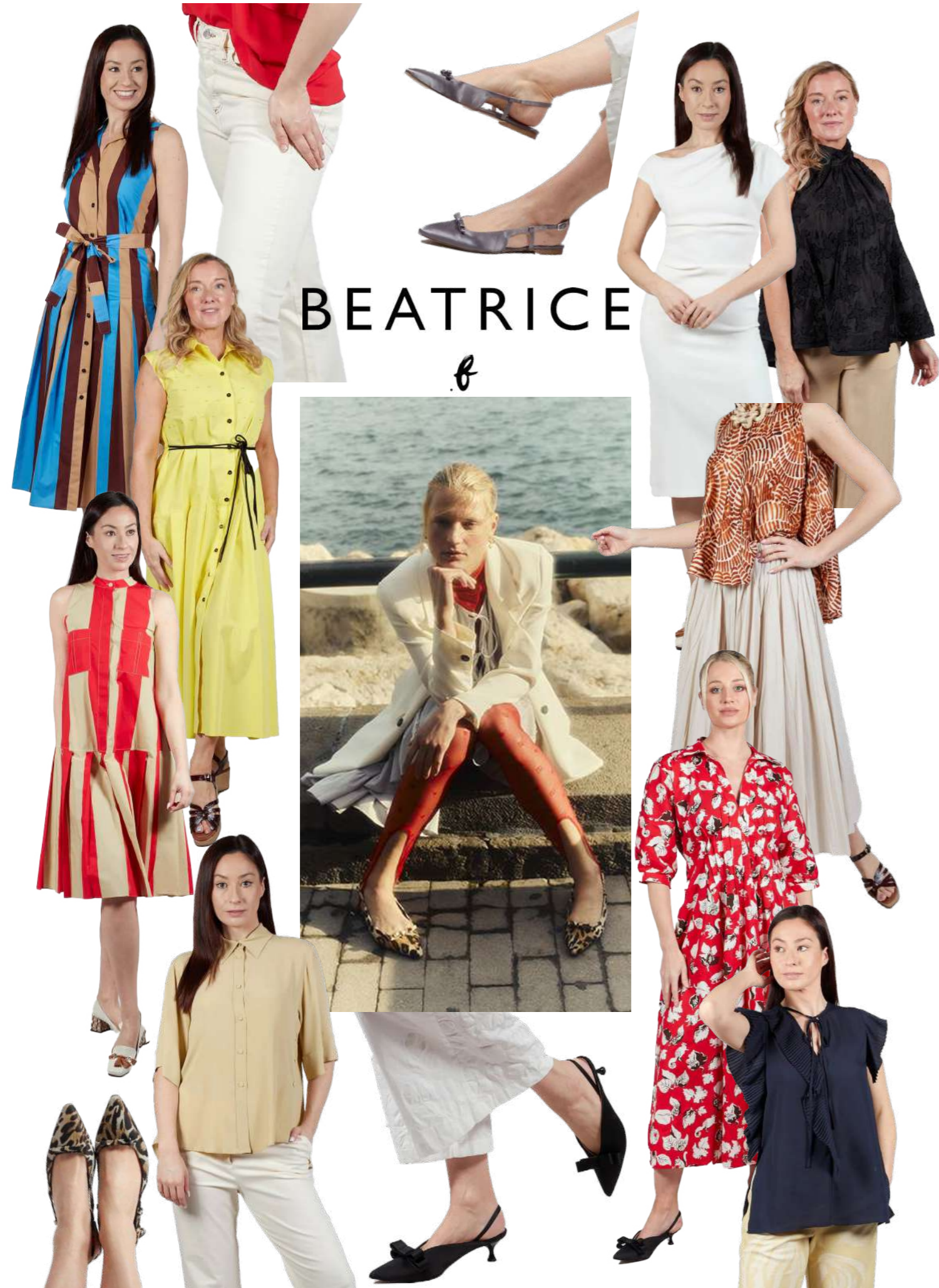
[SHOP THE EDITORIAL ONLINE](#)



# STYLING: LIGHTWEIGHT JACKETS

BEATRICE

*B*



# EDITORIAL HIGHLIGHT

Explore the bright colours of the Rundholz Mainline Spring/Summer 24 collection.



# KNITWEAR CARE TIPS

We have so many lovely pieces of knitwear to offer this season, so here is some of the ways we take care of our beloved knit pieces.

## HAND WASH

Gently hand wash knitted pieces with warm water and a gentle laundry detergent to keep the fibres soft and in shape



## DRY FLAT

After the gentle wash, lay your knitwear flat on a towel and roll up into the towel to remove any water. Then position to it's shape and leave to dry



## STEAM

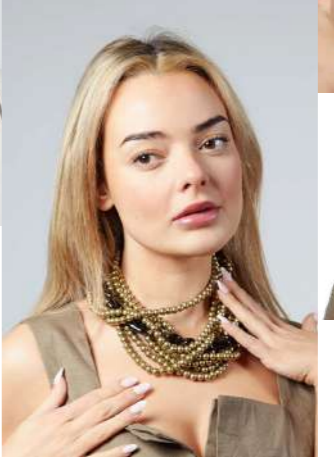
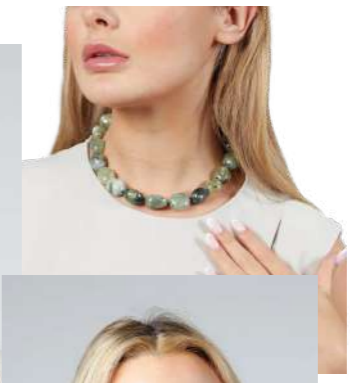
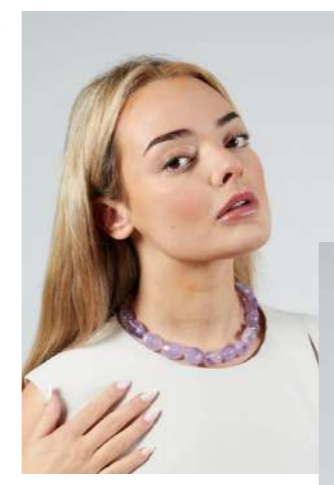
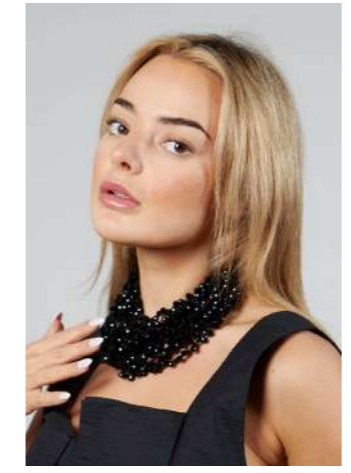
Steam your pieces instead of ironing to remove creases and pulls. Ironing flattens the fibres, whilst steaming relaxes them.





**SHOP ANGELA CAPUTI**  
VIEW THE FULL CATALOGUE ONLINE NOW

SN



**SHOP  
SITA  
NEVADO**

**NEW IN:  
ACCESSORIES**



**VIAMAILBAG**  
MADE IN ITALY



**SHOP VIA  
MAILBAG**



**CAMPOMAGGI**  
**SHOP NOW**



# SPRING ZEST

PHOTOGRAPHY Aurelija Karaliunaite MODEL Gabrielle Kusi Appiah STYLING Veneta Markova LOCATION Oxford

# STATE OF THE ART

PHOTOGRAPHY Eloise Arnott MODEL Hannah Walker STYLING Ann Whorrall LOCATION Cheshire





Olivia May Ltd 2024  
[www.oliviamay.org](http://www.oliviamay.org)