



X3 XR Series High Flow Intake

SKU(s): Stock Turbo 45mm (203FC0081), Paragon 43 (203FC0082), Paragon 46-50 (203FC0083)

INCLUDED PARTS

| |
|------------------------------------|
| (1) EVP Air Filter with Pre-Filter |
| (2) Rubber Rivet Nut |
| (2) Flanged Butten Head Screws |
| (1) Silicone Intake Tube |
| (1) XR Series Bracket |
| (1) Hardware Kit |

REQUIRED TOOLS

| |
|------------------------|
| 13mm Socket |
| 7mm Socket |
| T-30 Torx |
| Dremel or Cutting Tool |
| Silver Sharpie |

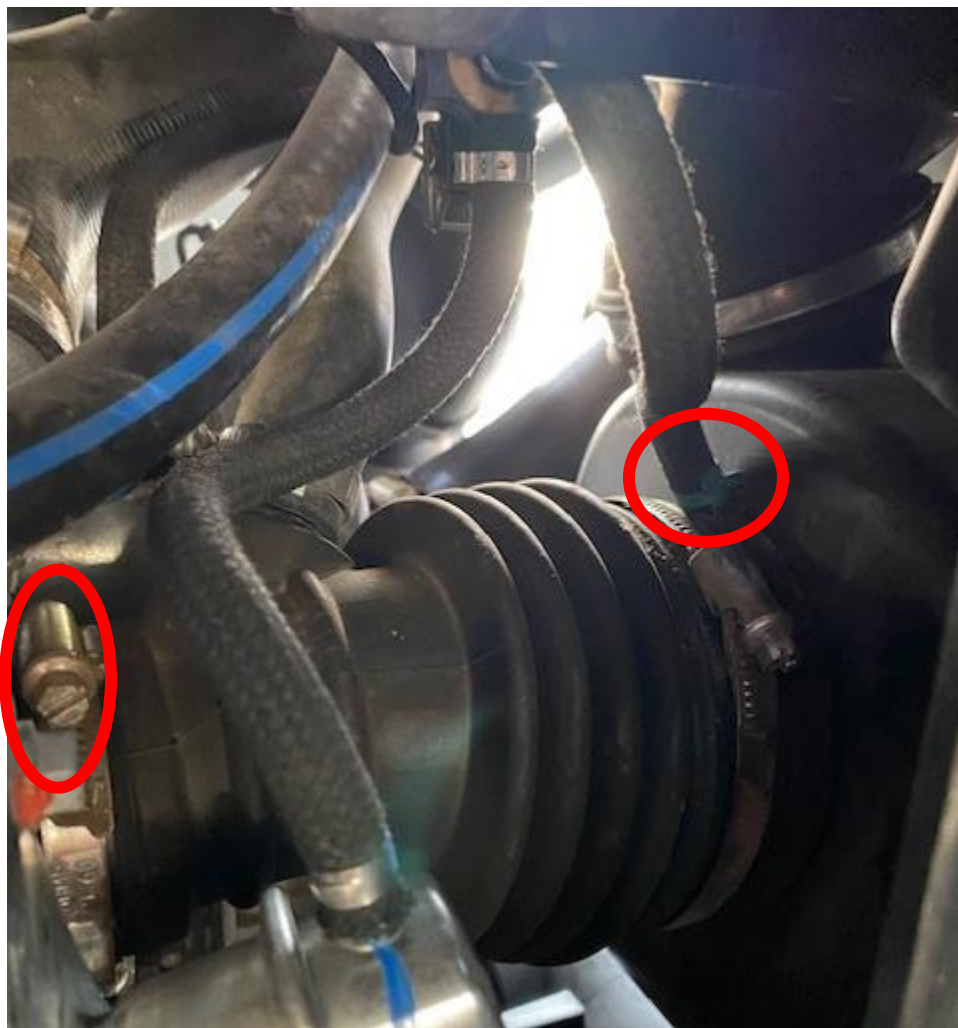


INSTALLATION STEPS:

Step 1: Remove the turbo access cover located on the firewall, between the seats.

Step 2: Remove or slide the drivers side seat forward.

Step 3: Through the turbo access cover, loosen the worm drive clamp connecting the intake tube to the turbo and the worm drive clamp connecting the air box to the intake above. Remove the boost reference port hose coming from the boost solenoid and the crank case breather hose.



Step 4: Remove the (2) 13mm bolts behind the seat that hold the air box to the firewall.



Step 5: Remove the OEM air box and filter. It is easier to remove the sway bar nut and push the sway bar forward. Below is the air box removed.



Step 6: Remove the cover over the coolant bottle and remove the white screen cover over the intake.

Step 7: Remove the Intercooler and plastic shroud.



Step 8: Build your silicone intake tube like shown below. 3/4-3/4" barb goes into the 3/4" hole with a pinch clamp for the crank case breather or boost recirculating valve. If you have a catch can, you will cap this plug with the 3/4" silicone cap. The 3/16" barb will go into the 3/16" port with a pinch clamp. This is for your boost reference port. Slide the silicone intake tube onto the turbocharger inlet, fasten down with new hardware through the access panel.



Step 9: Remove the (2) OEM M6 thread tabs from the plastic shroud, and place onto the bracket behind the drivers seat. See photo below.



Step 10: Mount the boost solenoid to the XR Series Bracket using the rubber rivet nuts and flanged button head screws.



Step 11: Mount the XR Series air filter bracket to the OEM firewall bracket. Tighten the silicone to the turbo inlet and XR Series air filter bracket.

Step 12: Install the pre filter and filter onto the XR Series bracket.





INSTALLATION INSTRUCTIONS

Thank you for choosing Evolution Powersports products. If you require further assistance, please call our Tech Support @ (715) 247-3862

Note: This product is exempt from the emission standards and related requirements of 40 C.F.R. § 1051 as provided by 40 C.F.R. § 1051.620, and California law [e.g., vehicle code §§ 27156 and 38391]. This product is sold only for use in connection with EPA certified, purpose-built, nonroad vehicles used solely for closed course, nonroad competition/racing and not used for any recreational purpose or on public highways or right of ways maintained by and open to the public. This product is sold only in connection with machines that do not fall under state and/or federal noise or emission standards/regulations. Purchasers who/that purchase this product represent and warrant that the product is purchased only in connection with EPA -certified, emission-regulations-exempt and noise-regulations-exempt competition/racing vehicles as interpreted under applicable state and/or federal law. Questions: Call Evolution Powersports at (715) 247-3862.

WE'D LOVE TO HEAR FROM YOU - LEAVE A REVIEW & STAY CONNECTED!   