



### **X3 Large Fuel Tank**

**SKU(s): 925FC0181 (Natural), 925FC0182 (Black), Fuel Pump Seal (925FC0183)**

#### **INCLUDED PARTS**

(1) 14.3USG Fuel Tank
(1) OEM Fuel Pump Seal

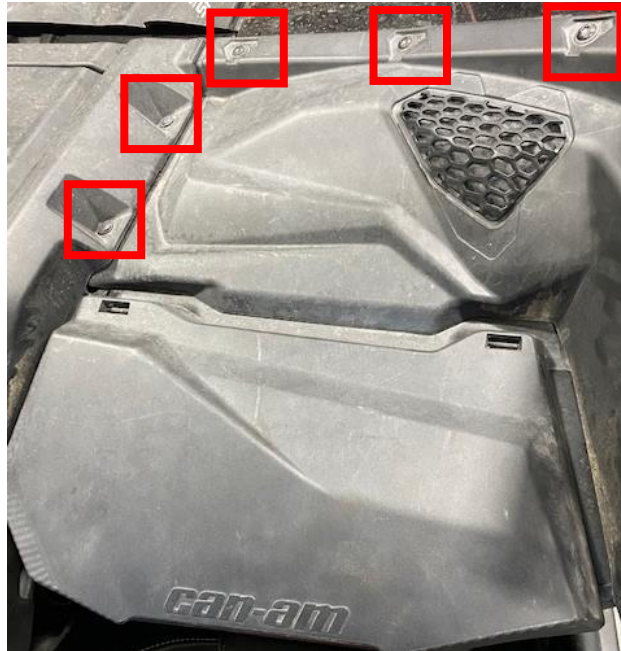
#### **REQUIRED TOOLS**

T-30 Socket and Ratchet
13mm Socket and Open-End Wrench
Push Dart Removal Tool

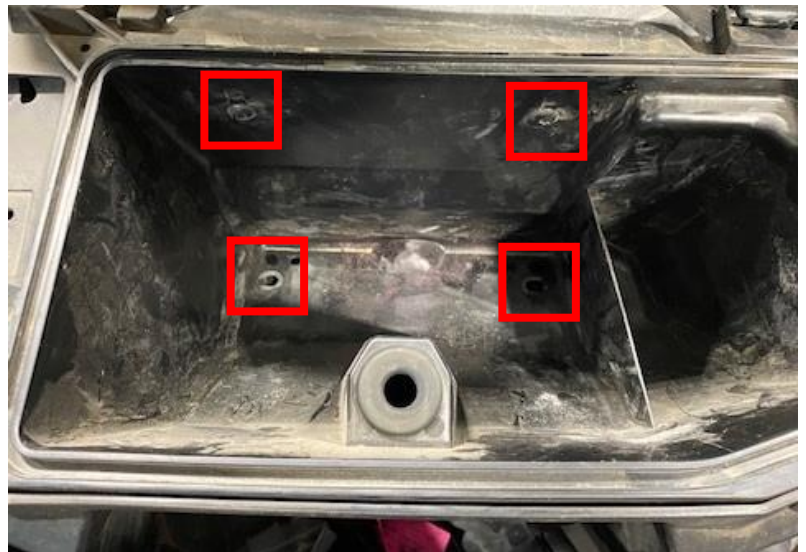
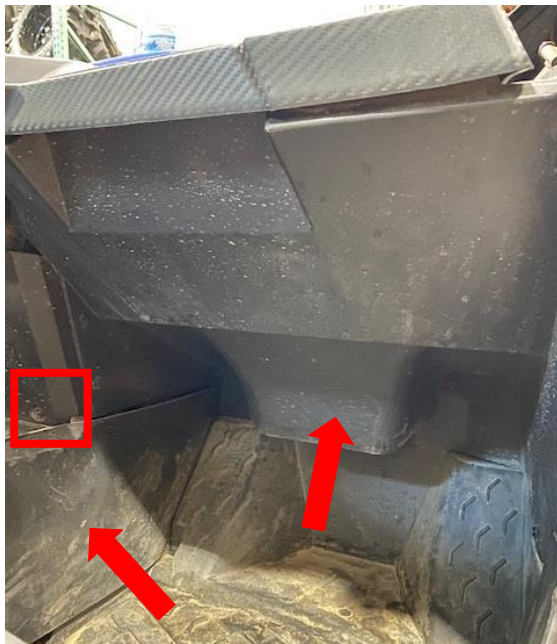


**Step 1:** Siphon all fuel out of the OEM tank, into a clean and safe container.

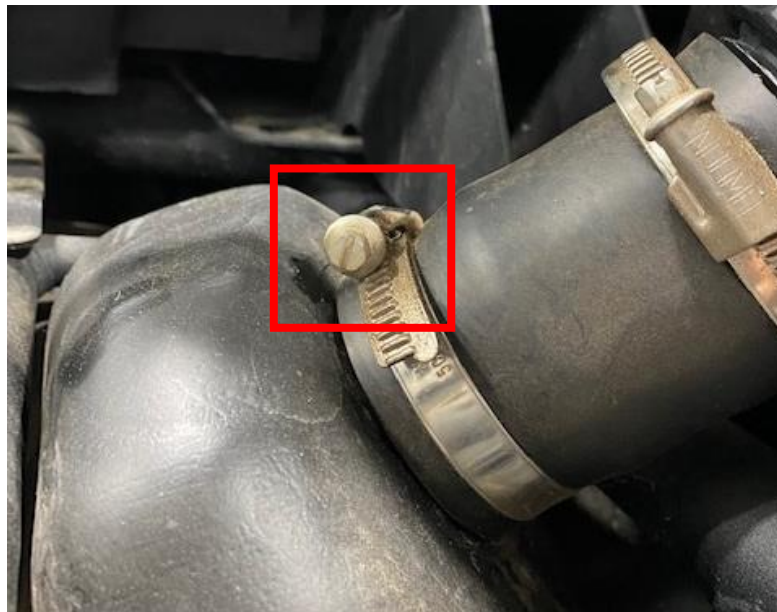
**Step 2:** Remove passenger side upper dash by removing (5) T-30 screws and (2) push darts.



**Step 3:** Remove passenger side of center council, underneath the glove box and glove box. Total of (8) push darts (two in the bottom of the glove box) and (6) T-30 screws.



**Step 4:** Now the fuel tank is visible, remove the breather vent hose (some have pinch clamps on them) disconnect fuel line and power plug to the fuel pump assembly. Also loosen the hose clamp on the bottom of the filler neck. No need to loosen the top.



**Step 5:** Loosen the (2) tanks straps with a 13mm socket and open-end wrench. No need to remove the straps from the firewall located in the front.



**Step 6:** Now the tank is ready to be removed, slip the filler neck hose off the tank and drop the tank out of the dash. Once removed, blow the old tank off with compressed air.

**Step 7:** Blow the inside of the new tank out, making sure all debris is removed.



**Step 8:** Install the new fuel pump assembly gasket into the new tank. It is easier to apply a light amount of grease on the inside of the gasket. Remove the oil cap and fuel pump assembly out of the old tank, and place into the new tank. Check your filter sock to see if it needs replacing. **NOTE: Make sure the float is clocked correctly and not on the side of the tank.**



**Step 9:** Install the new tank into the car, make sure all hoses can move freely. Install the filler neck back onto the tank, this will help hold the tank into place while fastening the straps. Fasten the tank straps until the straps touch the support bar. Reconnect the fuel line, power supply and breather vent. Install the supplied hose clamp onto the breather vent if loose.



**Step 10:** Reinstall the glove box and dash in the same order it was taken out.

**Step 11:** Remove the fuel cap and pour the fuel back into the tank that was siphoned out.

Thank you for choosing Evolution Powersports products. If you require further assistance, please call our Tech Support @ (715) 247-3862

**Note:** This product is exempt from the emission standards and related requirements of 40 C.F.R. § 1051 as provided by 40 C.F.R. § 1051.620, and California law [e.g., vehicle code §§ 27156 and 38391]. This product is sold only for use in connection with EPA certified, purpose-built, nonroad vehicles used solely for closed course, nonroad competition/racing and not used for any recreational purpose or on public highways or right of ways maintained by and open to the public. This product is sold only in connection with machines that do not fall under state and/or federal noise or emission standards/regulations. Purchasers who/that purchase this product represent and warrant that the product is purchased only in connection with EPA -certified, emission-regulations-exempt and noise-regulations-exempt competition/racing vehicles as interpreted under applicable state and/or federal law. Questions: Call Evolution Powersports at (715) 247-3862.