

X3 Blow-Off Valve V2 (BOV) Kit

SKU(s): 100FC0115

INCLUDED PARTS

| |
|------------------------------|
| (1) EVP Blow-Off Valve |
| (1) Blow-Off Valve Prefilter |
| (1) Silicone Vacuum Line Kit |
| (1) 13.3mm Pinch Clamp |
| (1) 11.3mm Pinch Clamp |
| (1) Manifold Port Adaptor |
| (2) Plastic Cable Ties |

REQUIRED TOOLS

| |
|-----------------------|
| T-30 Torx |
| Side Cutters |
| Flat Head Screwdriver |
| Spring Puller |

NOTE: THIS KIT REQUIRES THE EVP SILICONE CHARGE TUBE (TU-CAMX3T-SBH)



INSTALLATION STEPS:

NOTE: BOV operations will become more consistent after a few short minutes when the piston O-rings slide up and down in the BOV cylinder. You can also push your finger up and down on the piston before installing. These BOV kits come pre-lubricated.

Step 1: Remove BOV block off from the EVP silicone charge tube set (if installed).

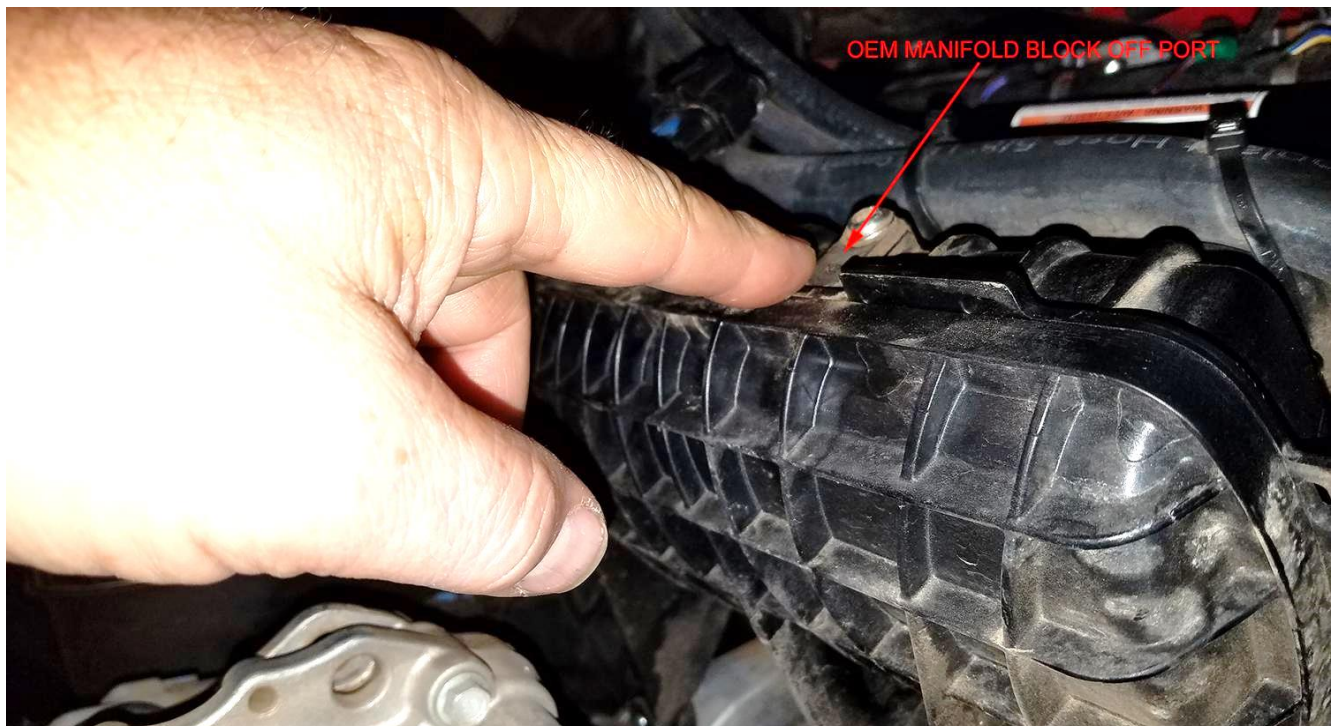
Step 2: Adjust BOV cap – for the Can Am X3, screw the adjustment cap clockwise until it stops.

Step 3: Install BOV Prefilter and **secure with supplied zip tie to the groove in the BOV body.**

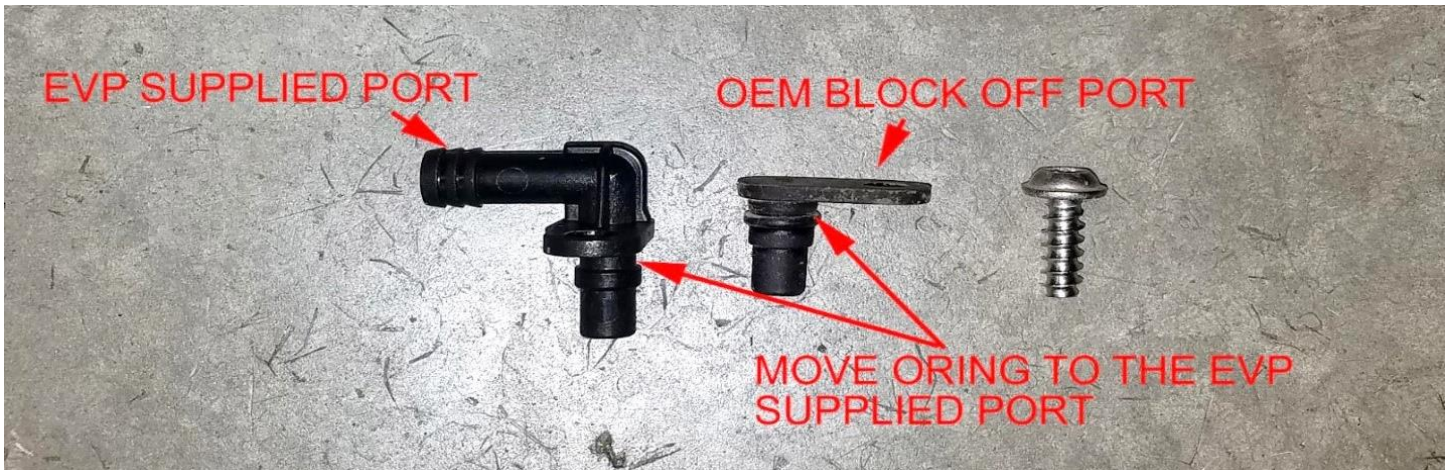
Step 4: Install EVP BOV into the EVP Silicone Charge Tube port and secure with supplied worm drive clamp.

Step 5: Remove OEM manifold port block off (see picture below) using a T-30 Torx. Pry up with screwdriver to remove (the O-ring is holding it in place.)

Step 6: Move the O-ring from the OEM block off port to the EVP supplied port and install into manifold in place of the block off.



Step 7: Connect EVP supplied hose to the Port – wet with water or brake cleaner to make it slide on easier. Install the other end of the silicone onto the BOV barb and secure with supplied pinch clamp.



Step 8: Make sure all steps were completed and all clamps are tight. Reinstall exhaust and all panels removed earlier.

Step 9: Drive vehicle – BOV spring tension can be adjusted for desired performance/sound by loosening/tightening the BOV cap. Do not loosen to the point where you can see the O-ring that seals the cap to the body. Less spring pressure will allow the BOV to blow off earlier, more pressure, later.

Thank you for choosing Evolution Powersports products. If you require further assistance, please call our Tech Support @ (715) 247-3862

Note: This product is exempt from the emission standards and related requirements of 40 C.F.R. § 1051 as provided by 40 C.F.R. § 1051.620, and California law [e.g., vehicle code §§ 27156 and 38391]. This product is sold only for use in connection with EPA certified, purpose-built, nonroad vehicles used solely for closed course, nonroad competition/racing and not used for any recreational purpose or on public highways or right of ways maintained by and open to the public. This product is sold only in connection with machines that do not fall under state and/or federal noise or emission standards/regulations. Purchasers who/that purchase this product represent and warrant that the product is purchased only in connection with EPA -certified, emission-regulations-exempt and noise-regulations-exempt competition/racing vehicles as interpreted under applicable state and/or federal law. Questions: Call Evolution Powersports at (715) 247-3862.