

Pro R Aluminum Coolant Tank/ECU Removal

Step 1: Located behind the passenger seat (if a 4 seater the rear passenger seat), remove the (4) push darts holding the sound dampener in.

Step 2: Located behind is the ECU. Remove the black clip. Remove the (4) T15 screws holding the ECU in place. Unclip the ECU connectors, left before the right.



Figure 1



Figure 2

Step 3: Remove the bed to CVT ducting, (2) worm drive clamps.

Step 4: Freely hold up the coolant reservoir tank, keeping the flat lip on the right side of the tank inline with the plastic edge. (Figure 71).

Step 5: Freely hold the supplied template up to the firewall. The bottom right hole should be 20mm center to center above the template. (Figure 72). Mark the (4) holes out with a sharpie. Cut the holes out with a 1/4" drill bit.



Figure 3



Figure 4

Step 6: Install the coolant reservoir tank with supplied (4) M6x16 screws and (4) locknuts after we install all the hoses.

Step 7: Coolant reservoir layout below:

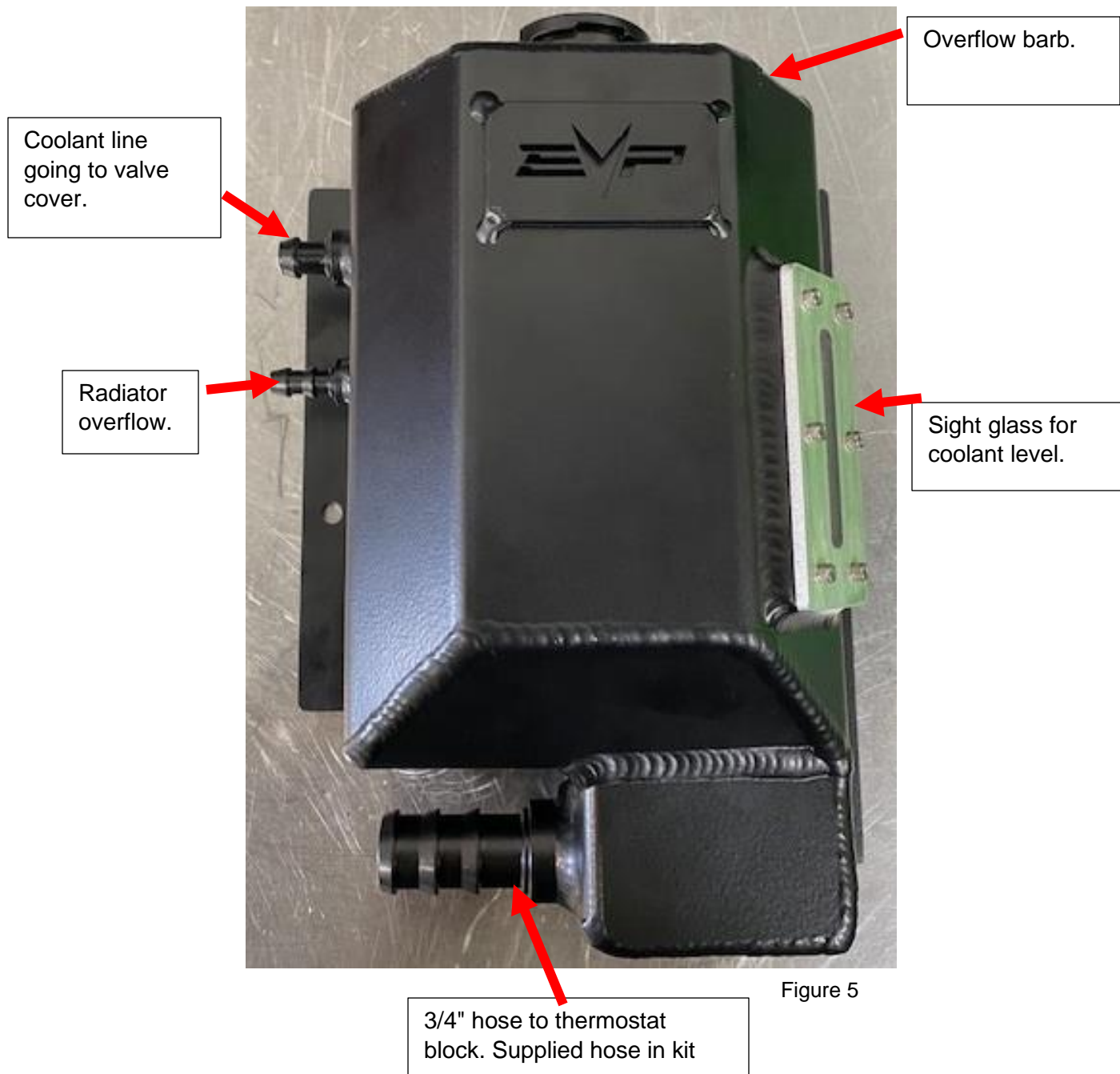


Figure 5

Step 8: Install the OEM radiator overflow onto the coolant tank. Use 15.7mm pinch clamp. Install the OEM valve cover hose onto the top bar. Use 18.5mm pinch clamp. Cut the pinch clamp holding the valve cover fitting on, install the 1/2" coupler and 1/2" hose. Use pinch clamps to fasten down. Reinstall the OEM fitting onto the end of this hose. See photos.

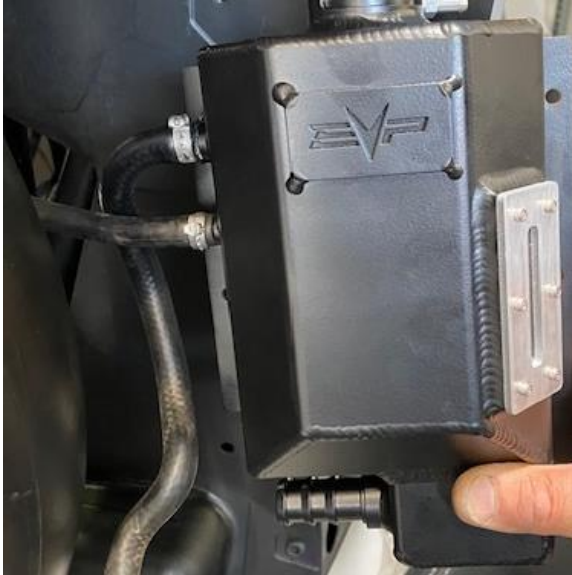


Figure 6



Figure 7



Figure 8

Step 9: Install the overflow, 6mm ID hose using a 1/2" P-clamp to hold the hose onto the firewall.



Figure 9

Step 10: Install the supplied hose from the large barb on the coolant tank to the thermostat block. Reuse (2) self-tightening OEM clamps.



Figure 10



Figure 11



INSTALLATION INSTRUCTIONS

Thank you for choosing Evolution Powersports products. If you require further assistance, please call our Tech Support @ (715) 247-3862

Note: This product is exempt from the emission standards and related requirements of 40 C.F.R. § 1051 as provided by 40 C.F.R. § 1051.620, and California law [e.g., vehicle code §§ 27156 and 38391]. This product is sold only for use in connection with EPA certified, purpose-built, nonroad vehicles used solely for closed course, nonroad competition/racing and not used for any recreational purpose or on public highways or right of ways maintained by and open to the public. This product is sold only in connection with machines that do not fall under state and/or federal noise or emission standards/regulations. Purchasers who/that purchase this product represent and warrant that the product is purchased only in connection with EPA -certified, emission-regulations-exempt and noise-regulations-exempt competition/racing vehicles as interpreted under applicable state and/or federal law. Questions: Call Evolution Powersports at (715) 247-3862.

WE'D LOVE TO HEAR FROM YOU - LEAVE A REVIEW & STAY CONNECTED!   