



**Polaris XP Turbo/S & Pro XP & Ranger XP 1000 (P90X-HD 2021+ & P190X 2020) Secondary Roller Kit**

SKU(s): 404FP0036 (2020 Pro XP), 404FP0037 (2021+ Pro, XPT, Ranger)

**INCLUDED PARTS**

(3) Rhino Rollers

**REQUIRED TOOLS**

Clutch Compression Tool

Flat Blade Screwdriver

Circlip Tool

Compressed Air

Scotch Brite Green Pads

Brake Cleaner



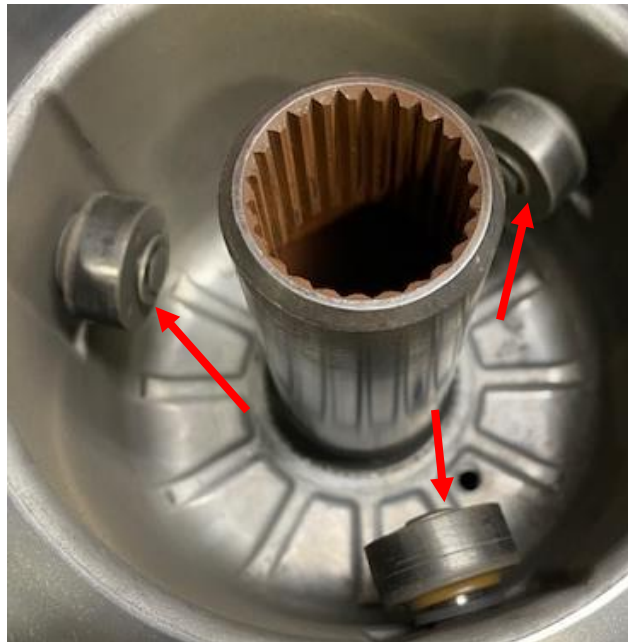
**Step 1:** Remove CVT outer clutch cover with an 8mm socket.

**Step 2:** Remove drive belt, remove Allen key.

**Step 3:** Use a 15mm socket and breaker bar/ impact to remove secondary clutch. Remove the bolt with washers.

**Step 4:** Separate both sheaves. Blow both sheaves out with compressed air. With a green scotch brite pad, clean the surfaces on both sheaves. With a rag and cloth clean the sheaves with brake cleaner.

**Step 5:** The stationary sheave will have (3) rollers in it. With a circlip tool or screwdriver, pop the circlip off on each pin axel.



**Step 6:** Once circlip is removed, slide the roller and circlip off the axle.



**Step 7:** Clean the thrust washers, circlips, and axles with brake cleaner.



**Step 8:** Reinstall thrust washer, new roller (make sure the indent is on the outside of the roller, against the thrust washer). Install circlip. Make sure rollers can freely spin.



**Step 9:** Re connect both sheaves, making sure helix is riding on all (3) rollers. Reinstall secondary clutch with correct washers and bolt. Torque down to 55 ft lbs. Reinstall CVT drive belt and outer clutch cover.



## INSTALLATION INSTRUCTIONS

Thank you for choosing Evolution Powersports products. If you require further assistance, please call our Tech Support @ (715) 247-3862

**Note:** This product is exempt from the emission standards and related requirements of 40 C.F.R. § 1051 as provided by 40 C.F.R. § 1051.620, and California law [e.g., vehicle code §§ 27156 and 38391]. This product is sold only for use in connection with EPA certified, purpose-built, nonroad vehicles used solely for closed course, nonroad competition/racing and not used for any recreational purpose or on public highways or right of ways maintained by and open to the public. This product is sold only in connection with machines that do not fall under state and/or federal noise or emission standards/regulations. Purchasers who/that purchase this product represent and warrant that the product is purchased only in connection with EPA -certified, emission-regulations-exempt and noise-regulations-exempt competition/racing vehicles as interpreted under applicable state and/or federal law. Questions: Call Evolution Powersports at (715) 247-3862.

WE'D LOVE TO HEAR FROM YOU - LEAVE A REVIEW & STAY CONNECTED!   