



Maverick R Rising Rate 340LPH Fuel Pump Assembly

SKU(s): 500FC0065

INCLUDED PARTS

(1) EVP Fuel Pump Assembly
(1) Vacuum Hose
(1) 20 AMP Fuse
(1) Fuel Pump Relay Harness

REQUIRED TOOLS

10mm Socket
T-30 Socket
Dielectric Grease
Rags



Step 1: Remove the center dash cover (if it hasn't already fell off).



Figure 1

Step 2: Remove the passenger side yellow panel. Slightly lift on each corner, (4) tabs are holding it in place.



Figure 2



Figure 3

Step 3: With a T-30 socket, remove the cage trim piece. You can open the fuel door to help remove.



Figure 4

Step 4: Remove the passenger side upper dash. (3) 10mm screws and (1) T-25 screw.

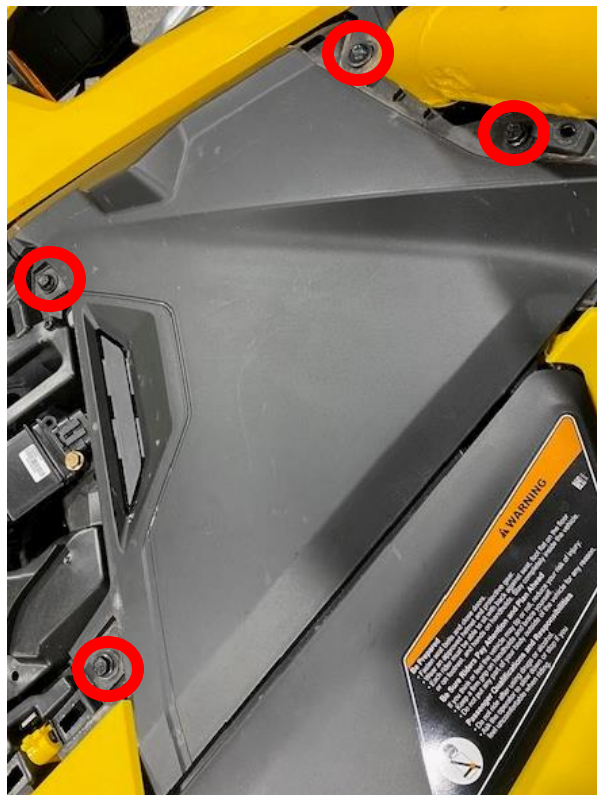


Figure 5

Step 5: Remove the fuel pump safety bracket by removing (2) 10mm screws. **NOTE:** Notice the arrow on the fuel pump is facing the middle of the box. When reinstalling make sure the arrow is facing the middle of the box or your fuel float will read incorrectly.

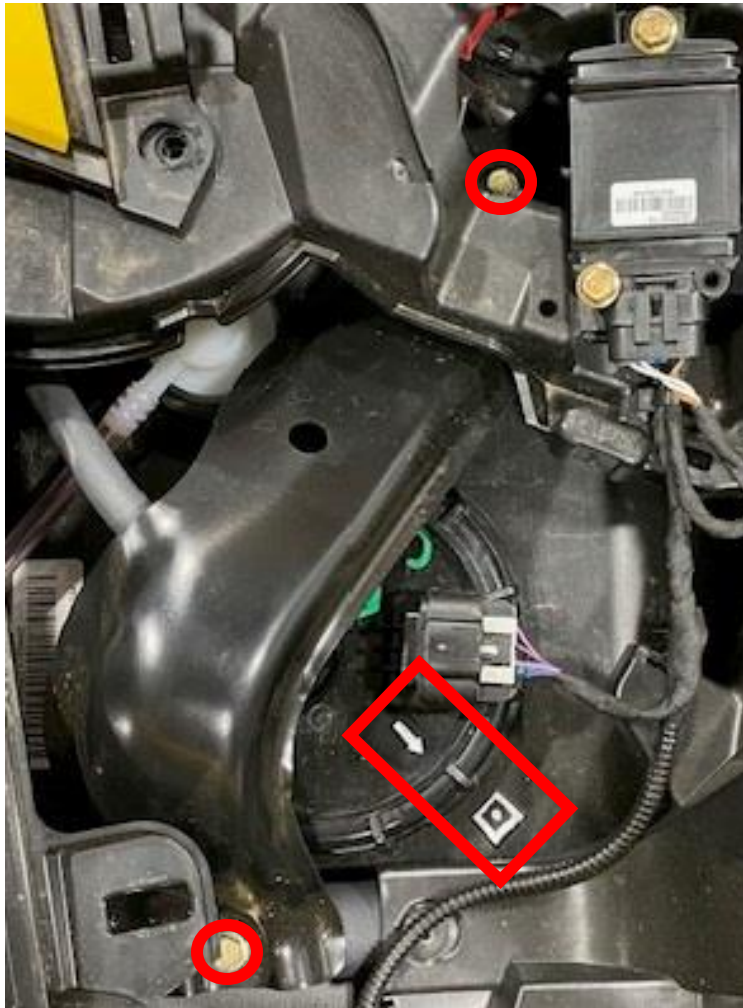


Figure 6

Step 6: Remove the silver safety clip on the electrical connector, then remove plug. Remove the blue safety clip on the fuel connector, press the black quick connect and remove the fuel hose.



Figure 7



Figure 8

Step 7: Remove the fuel pump nut, be careful not to damage it. The fuel pump assembly has springs so the hat might spring up about one inch. **NOTE: If you are changing fuel octane, drain your fuel tank now!**

Step 8: Install the new fuel pump assembly with a seal. Apply dielectric grease on the seal. Clock the fuel pump assembly correctly. Don't install the bracket yet.

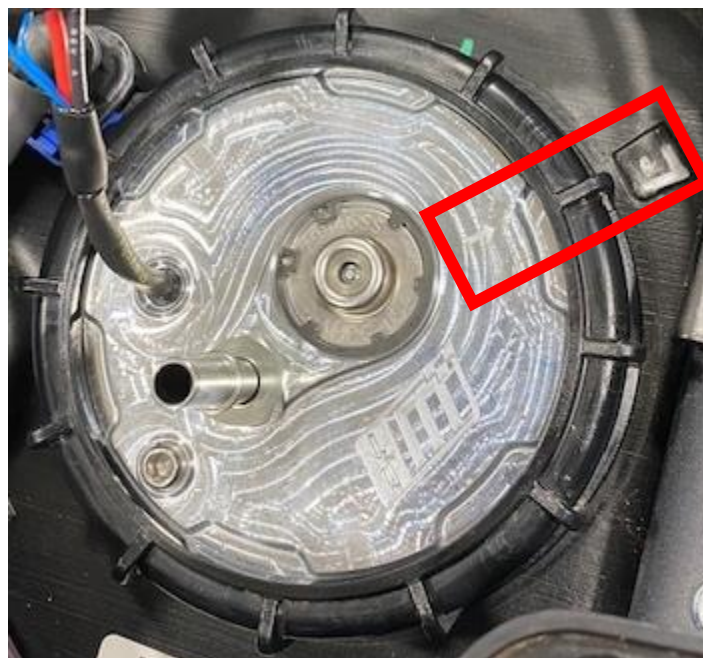


Figure 9

Step 9: Install the fuel pump relay harness into the vehicle. Use the positive and negative to the upper dash bus bar. Route the wires under the plastics, use a 10mm socket.



Figure 10

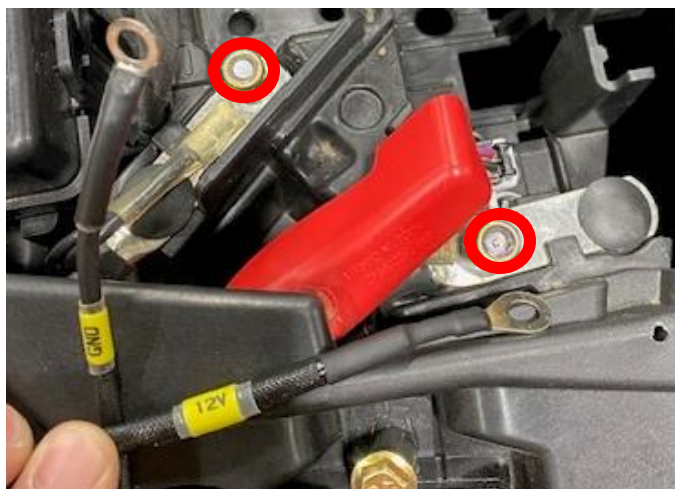


Figure 11



Figure 12

Step 10: Locate the plastic opening right in front of the fuel pump. Install the relay mounting clip into the slot. Mark with a sharpie and drill a 1/4" hole. Install supplied M6 flange screw and nut. Install the fuel pump harness to the fuel pump and OEM harness.



Figure 13



Figure 14



Figure 15

Step 11: Install supplied 3/16" 90 degree barb into the charge tube, use supplied pinch clamp to fasten. Install vacuum hose and clamp to the barb, route the hose through the firewall and up through the center tunnel, up the dash and to the fuel pump regulator. Loosely zip tie the hose (without kinking).



Figure 16



Figure 17

Step 12: Once the fuel pump relay harness, fuel line and vacuum line is connected; reinstall the fuel pump bracket. It is much easier to access everything with this removed.



Figure 18

Step 12: Behind the driver's seat you will find the fuse box. Locate the fuel pump fuse (F28), replace the 10amp with supplied 20amp.



Figure 19



NOTE: Plug the CodeShooter device into the vehicle and **UPDATE** your tune file for the rising rate fuel pump assembly. If you are changing your tune file make sure you have the correct fuel octane in the vehicle!

Step 13: Key the vehicle on a few times and look for fuel leaks. If everything checks out reinstall all plastics.

Thank you for choosing Evolution Powersports products. If you require further assistance, please call our Tech Support @ (715) 247-3862

***Note:** This product is exempt from the emission standards and related requirements of 40 C.F.R. § 1051 as provided by 40 C.F.R. § 1051.620, and California law [e.g., vehicle code §§ 27156 and 38391]. This product is sold only for use in connection with EPA certified, purpose-built, nonroad vehicles used solely for closed course, nonroad competition/racing and not used for any recreational purpose or on public highways or right of ways maintained by and open to the public. This product is sold only in connection with machines that do not fall under state and/or federal noise or emission standards/regulations. Purchasers who/that purchase this product represent and warrant that the product is purchased only in connection with EPA -certified, emission-regulations-exempt and noise-regulations-exempt competition/racing vehicles as interpreted under applicable state and/or federal law. Questions: Call Evolution Powersports at (715) 247-3862.*