



## Maverick R Plenum Clamp

SKU(s): 203FC0127

### INCLUDED PARTS

|                                |
|--------------------------------|
| (1) Top Plenum Clamp           |
| (1) Throttle Body Plenum Clamp |
| (1) Side Plenum Clamp          |
| (5) M6 x 14 Socket Cap Screw   |

### REQUIRED TOOLS

|                 |
|-----------------|
| 8, 10mm Socket  |
| T-30 Socket     |
| M5 Allen Wrench |
| Cutting Tool    |



For these instructions we removed the bed and intercooler for better photos. This section of instructions is not needed but does allow for more room. Skip to step 9.

**Step 1:** Remove wind dam. (2) push darts and (2) T-30 screws. Pop the front grill out of (4) grommets.



Figure 1



Figure 2

**Step 2:** Remove the driver side foam insert. (4) 10mm screws, (1) T-30, push out the intake duct.



Figure 3

**Step 3:** Remove the passenger side foam insert. (3) 10mm screws, (1) T-30.



Figure 4



Figure 5

**Step 4:** Remove the charge tubes from the intercooler.



Figure 6



Figure 7

**Step 5:** Remove (1) 10mm screw holding the coolant reservoir to the intercooler tray. Pull the reservoir back from the firewall, out of the clip. Strap the reservoir up.



Figure 8



Figure 9

**Step 6:** Disconnect both intercooler fans from the OEM harness.



Figure 10

**Step 7:** Remove (6) 10mm screws on the intercooler tray. Behind the seats, remove (4) rubber plugs and access (4) 10mm screw. Total of 10 screws.

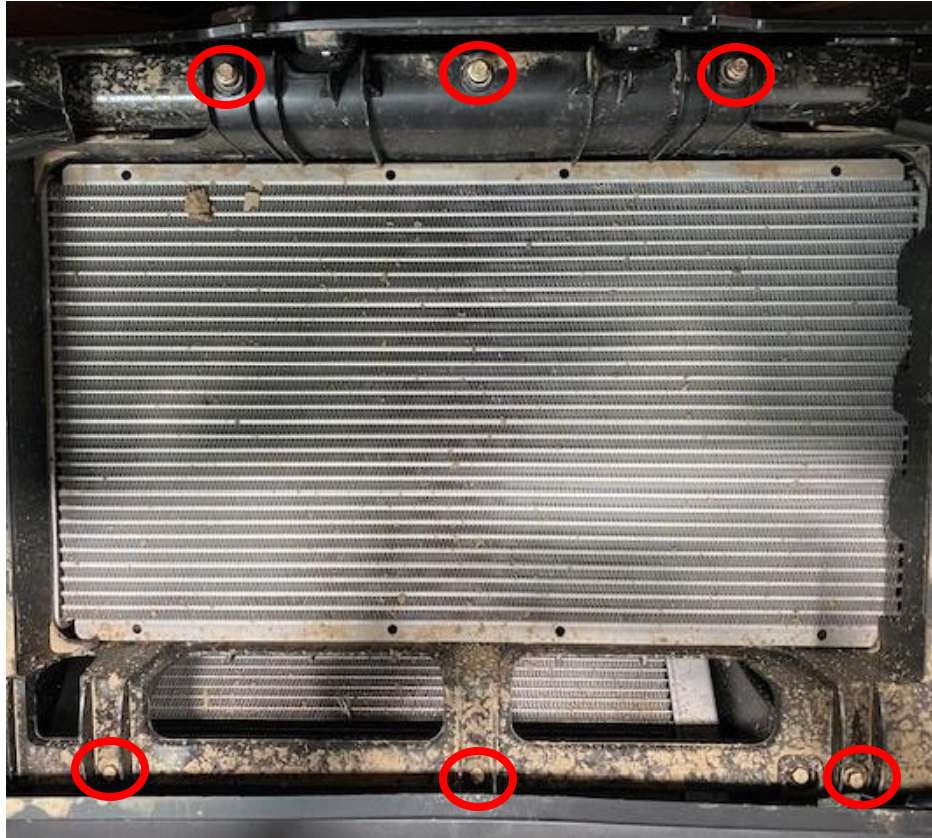


Figure 11

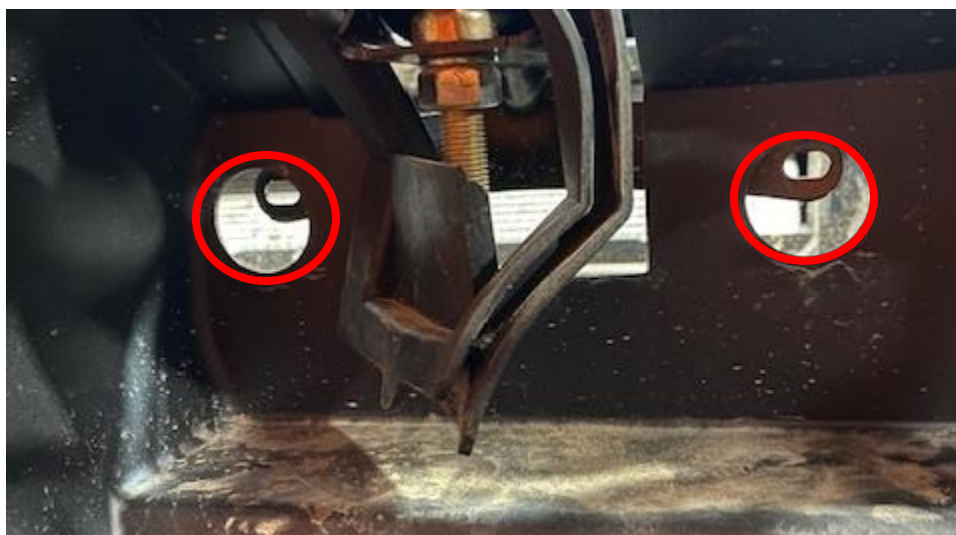


Figure 12

**Step 8:** Remove the intercooler.



Figure 13

**Step 9:** Remove the upper plastic cover on the plenum. (1) 8mm screw.



Figure 14

**Step 10:** Remove the coolant hose, transmission hose, and EVAP hose if your model is equipped. Remove the lower plastic tray by removing (5) 8mm screws.



Figure 15

**Step 11:** Install the top clamp, logo on the outside and inside clamp reuses (1) 8mm screw.



Figure 16



Figure 17



**Step 12:** Remove the throttle body from the plenum. Install the smallest clamp with the screw facing up. It is easiest to thread the screw onto the back of clamp for installation.



Figure 18



Figure 19



Figure 20

**Step 13:** Cut the zip tie on the front of the plenum holding the map sensor harness. Install the medium size clamp on the front of the plenum underneath the fuel rail.



Figure 21



Figure 22

**Step 14:** If you plan on running the OEM hose support bracket with the plenum clamps, you will have to notch out two areas shown below. Remove the support rib and notch a “C”.



Figure 23

**Step 15:** Reinstall all components in reverse order.

Thank you for choosing Evolution Powersports products. If you require further assistance, please call our Tech Support @ (715) 247-3862

**Note:** This product is exempt from the emission standards and related requirements of 40 C.F.R. § 1051 as provided by 40 C.F.R. § 1051.620, and California law [e.g., vehicle code §§ 27156 and 38391]. This product is sold only for use in connection with EPA certified, purpose-built, nonroad vehicles used solely for closed course, nonroad competition/racing and not used for any recreational purpose or on public highways or right of ways maintained by and open to the public. This product is sold only in connection with machines that do not fall under state and/or federal noise or emission standards/regulations. Purchasers who/that purchase this product represent and warrant that the product is purchased only in connection with EPA -certified, emission-regulations-exempt and noise-regulations-exempt competition/racing vehicles as interpreted under applicable state and/or federal law. Questions: Call Evolution Powersports at (715) 247-3862.