



## Maverick R High Flow Intake (HFI)

SKU(s): 203FC0129

### INCLUDED PARTS

(1) Intake Tube
(1) High Flow Air Filter and Pre Filter
(1) Venturi and Brackets
(1) Hardware

### REQUIRED TOOLS

10mm Socket
T-30 Socket
Dielectric Grease
Rags



**Step 1:** Remove the upper wind dam plastic above the intercooler and fresh air intake. (4) T-25.



Figure 1

**Step 2:** Remove the upper fresh air intake tube by loosening the worm drive on the air filter box and pushing the tube through the side panel.



Figure 2



Figure 3

**Step 3:** Remove the OEM air box buy loosening the worm drive clamp on the intake tube going to the turbocharger and (2) 13mm bolts located on the frame.



Figure 4



Figure 5

**Step 4:** Loosen the worm drive clamp on the valve cover breather tube. Loosen the worm drive on the intake tube located on the turbocharger. Remove the tube.



Figure 6

**Step 5:** If you are NOT running a catch can, remove the pinch clamp on the OEM intake hose and remove the hose assembly. This will be used in the new HFI tube.



Figure 7

**Step 6:** If you are NOT running a catch can you will install this hose onto the small port located on the new HFI tube. Use supplied pinch clamp.

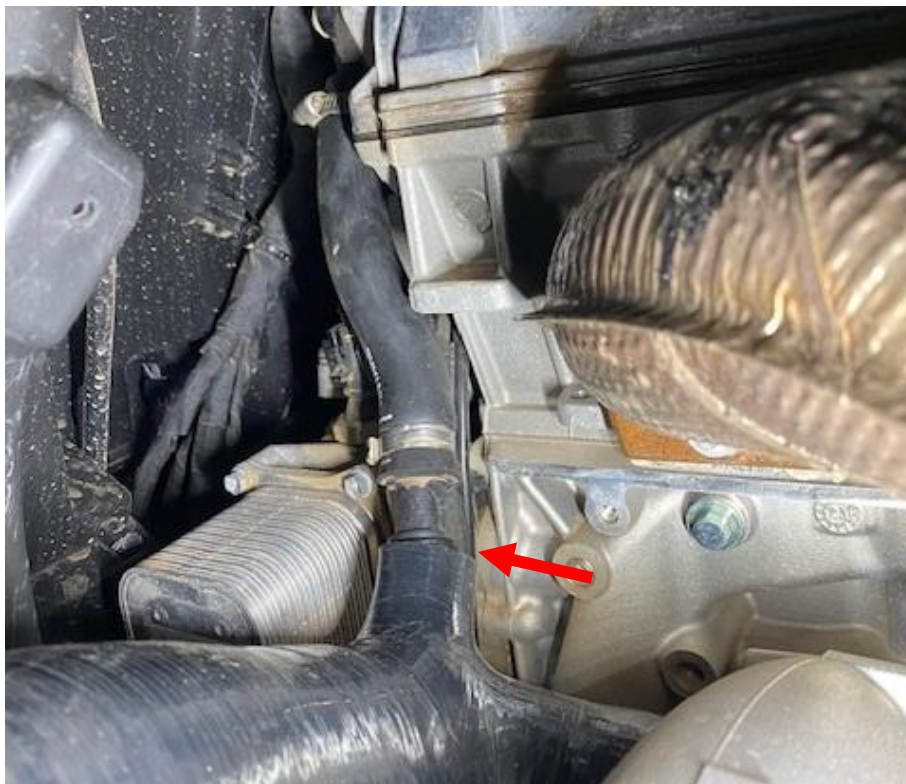


Figure 8

**Step 7:** If you ARE running a catch can, install supplied 3/4" barb and silicone cap in the valve cover breather port. If you are NOT running a boost recirculating valve, install the supplied plug in the larger port.



Figure 9

**Step 8:** Install the HFI tube onto the turbocharger with supplied 359 T-Bolt clamp, loosely.



Figure 10

**Step 9:** Install the other end of the HFI tube through the upper wind dam side panel.



Figure 11



Figure 12

**Step 10:** Install the air filter venturi and bracket, with supplied M6 flanged screws. See correct orientation below.



Figure 13



Figure 14

**Step 11:** Remove the (2) T-25 screws above the silicone tube.



Figure 15

**Step 12:** Slide the supplied 387 T Bolt clamp onto the tube, install the venturi and bracket onto the tube. Fasten down with the OEM hardware.



Figure 16

**Step 13:** Install the air filter bracket onto the intercooler shroud. Reuse OEM 10mm bolt. Keep this loose for now.



Figure 17

**Step 14:** Install the supplied pre-filter over the air filter. Make sure the pre filter goes over the M6 stud located on the top.



Figure 18



**Step 15:** Install the air filter onto the venturi with supplied 92-165mm worm drive. Install the air filter stud through the air filter bracket and secure with supplied M6 Nylock nut.



Figure 19



Figure 20

**Step 16:** With the HFI installed, you can go back and tighten all clamps if you haven't already. From turbocharger up to the air filter bracket.



Figure 21

**Step 17:** Flip the wind dam upside down, you will have to remove both dividers. Remove (2) 8mm screws and pull the dividers upward to unclip the bottoms.



Figure 22



Figure 23

**Step 18:** Reinstall the wind dam and fasteners.