

Exhaust O2 Bung

SKU(s): 953RU0149

INCLUDED PARTS

| |
|--------------------|
| (1) O2 Bung |
| (1) Block Off Bolt |

REQUIRED TOOLS

| |
|--------------------------|
| Drill and 7/8" Drill Bit |
| Tig Welder |
| Center Punch |
| Wire Brush |
| Grinder |
| 19,22mm Open End Wrench |
| Abrasive Pads |
| High Temp Anti-Seize |

NOTE: Always mount the O2 bung after the OEM O2 sensor, but before the muffler. Always mount the O2 bung from 10 O'clock to 2 O'clock (top side) of the exhaust pipe. This will keep your O2 sensor from catching condensation and foreign debris.



Step 1: Locate a good mounting spot for the O2 bung, sometimes this is easier to do with the exhaust mounted on the car. Try to keep it behind the OEM O2 sensor and in a 10-2 O'clock orientation (top side) of the exhaust. Sometimes the heat shield will need to be trimmed so this will give you a better configuration where you want the O2 bung located.

Step 2: Pull the exhaust off and bring it to a clean work bench.

Step 3: With an abrasive pad, clean the location to where the O2 bung will be placed.

Step 4: Measure out a 3/4" (0.7500") circle with a sharpie. As you can see in figure 1, the ID of the bung is 0.6500" so making the circle 0.7500" will ensure your O2 sensor won't touch the exhaust pipe.



Figure 1



Figure 2

Step 5: Take a hole punch and punch an indent into the middle of the circle (0.375") you drew with a sharpie. (Figure 3)

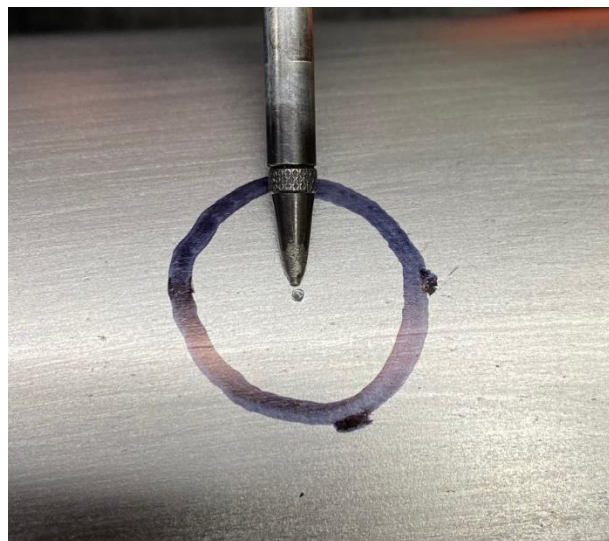


Figure 3

Step 6: Cut the hole out, with a Unibit (step drill) or a 7/8" bit. Do NOT cut more than 7/8". Make sure you cut directly straight down.

Step 7: Once the hole is complete, clean the top surface from debris and metal shards. You may need to use an abrasive pad. Blow out the inside of the exhaust with compressed air. (Figure 4).

Step 8: Center the O2 bung over the 7/8" hole.

Step 9: Tack weld (2) spots, cover the top of the bung with a plug or piece of wood to keep splatter out of the threads. Run a bead around the entire O2 bung. Make sure it has no leaks.

Step 10: Reconnect the exhaust to the machine, trim the heat shield if need be.

Step 11: Whether you are placing the block-plug or a O2 sensor into the bung, put anti-seize on the threads. Block off bolt is a 19mm, the O2 sensor is a 22mm. (Figure 5).



Figure 4



Figure 5



INSTALLATION INSTRUCTIONS

Thank you for choosing Evolution Powersports products. If you require further assistance, please call our Tech Support @ (715) 247-3862

Note: This product is exempt from the emission standards and related requirements of 40 C.F.R. § 1051 as provided by 40 C.F.R. § 1051.620, and California law [e.g., vehicle code §§ 27156 and 38391]. This product is sold only for use in connection with EPA certified, purpose-built, nonroad vehicles used solely for closed course, nonroad competition/racing and not used for any recreational purpose or on public highways or right of ways maintained by and open to the public. This product is sold only in connection with machines that do not fall under state and/or federal noise or emission standards/regulations. Purchasers who/that purchase this product represent and warrant that the product is purchased only in connection with EPA -certified, emission-regulations-exempt and noise-regulations-exempt competition/racing vehicles as interpreted under applicable state and/or federal law. Questions: Call Evolution Powersports at (715) 247-3862.

WE'D LOVE TO HEAR FROM YOU - LEAVE A REVIEW & STAY CONNECTED!   