



## **EVP S3 Fast-Back Cage**

**SKU(s):**

### **INCLUDED PARTS**

(1) EVP S3 Cage
(1) Hardware Kit

### **REQUIRED TOOLS**

Torque Wrench
T-20, T-30, T-40 Torx
16, 17mm socket
Blue Loctite
18mm open end wrench

**NOTE:** This cage requires a bed delete that is not included in this kit. EVP bed delete kit (Black (925FC0029), Brushed (925RC0034)). These installation instructions were done on a 2021 X3 Turbo RR XRS.



(EVP S3 Fast-Back Cage on a 2021 X3 Turbo RR)

### **INSTALLATION STEPS:**

**Step 1:** Remove passenger side dash by removing (5) T-30 Torxs and (2) push darts. (Figure 1)



(Figure 1)

**Step 2:** With a 17mm socket remove (2) front passenger pillar cage bolts from underneath the dash. On the drivers side the dash does NOT need to be removed. Remove (2) 17mm head bolts from the driver's side. (Figure 2)



(Figure 2)

**Step 3:** On the passenger/driver rear pillar, remove the black housing around the cage. Use a T-30 Torx and remove (2) screws. Pull the black housing straight back because there is a clip securing it to the vehicle. (Figure 3)

**Step 4:** Remove both shock reservoir claps off the OEM cage. Use an M5 Allen and remove (4) bolts per clap.

**NOTE:** This is only on the X3 Turbo RR not the DS Turbo/RR)

**Step 5:** Remove both rear fenders from the box, removing (5) T-30 Torx and (1) T-20 Torx underneath the box, next to the taillight.

**Step 6:** On the rear box pillars, remove (2) 13mm bolt and nut for each side. These are only accessible from underneath the box.

(See figure 4)

**Step 7:** On the top of the rear box pillar, remove (2) T-40 Torx and use a 14mm socket on the back side. Once this is complete you can pull the rear box pillars off the frame and out of the rear fender.

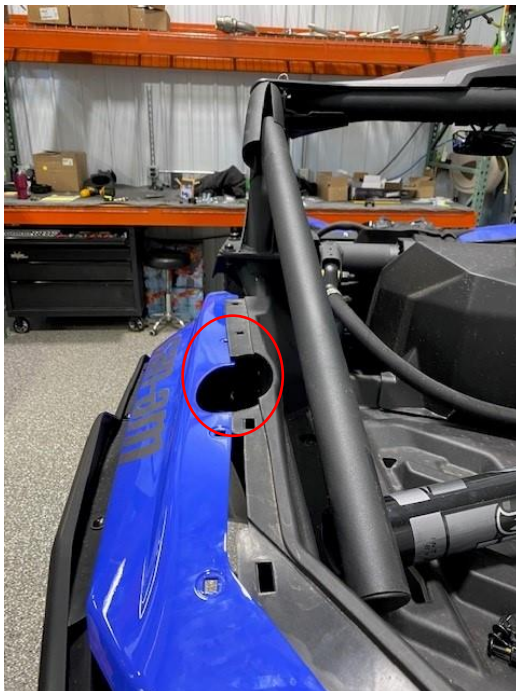
(See Figure 5).



(Figure 3)



(Figure 4)



(Figure 5)



**Step 8:** For both middle cage pillars, remove (3) bolts from the cage plates to the frame, using a 16mm socket and 18mm open end wrench. Do this to both sides. (See figure 6).

**Step 9:** With another set of hands, remove the cage from the vehicle by walking it towards the rear of the vehicle.

**Step 10:** Install the new EVP S3 cage the same way, walking the cage from the rear of the vehicle. Slide the front pillars in first.

**Step 11:** With blue Loctite and re-using the front OEM pillar bolts (4) (2 1/2" M12x1.75) hand tighten the front pillars.

**Step 12:** With blue Loctite, install (3) bolts per side on attaching the cage plate to the frame of the vehicle. This may take some prying to get all the holes lined up.

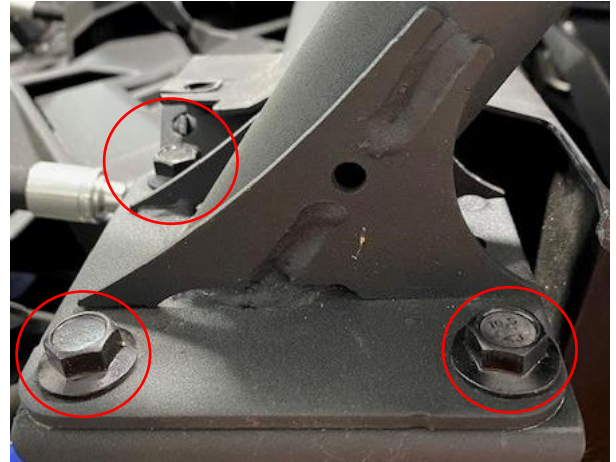
**Step 13:** Once all (10) cage bolts are installed, torque them all to 85 ft-lbs. (See figure 7)

**Step 14:** Remove the bed and install the bed delete kit if you do not already have one.

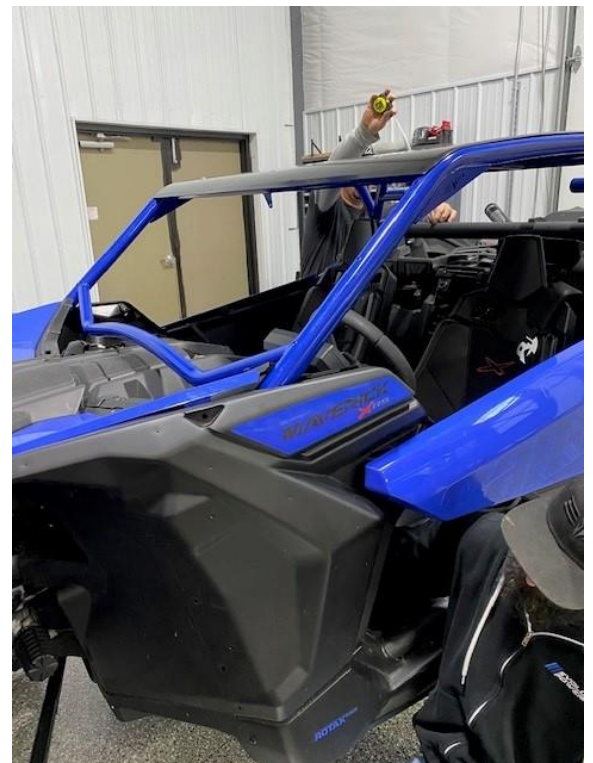
**Step 15:** If you are not doing a bed delete at this time, reassemble the rear fenders to the box using (5) T-30 Torx and (1) T-20 Torx by the taillight.

**Step 16:** Reinstall the front passenger dash using (5) T-30 Torx.

**Step 17:** Reinstall the shock reservoirs onto the shock reservoir tabs now located on the rear pillar of the cage. (See figure 8).



(Figure 6)



(Figure 7)



(Figure 8)



**Step 18:** If installing a DOT windshield, make sure your entire dash is installed. You must have your windshield off to access the front dash bolts.

**Step 19:** Place the windshield on the car/cage. Hand tighten (6) 4mm Allen bolts into the front pillars. (3) on each pillar.

**Step 20:** Hand tighten (2) 4mm Allen bolts with washers and locknuts on the middle of the windshield mounting it to the roof of the cage.

**Step 21:** Torque all (8) 4mm windshield bolts to 10 ft-lbs.





## INSTALLATION INSTRUCTIONS

Thank you for choosing Evolution Powersports products. If you require further assistance, please call our Tech Support @ (715) 247-3862

**Note:** This product is exempt from the emission standards and related requirements of 40 C.F.R. § 1051 as provided by 40 C.F.R. § 1051.620, and California law [e.g., vehicle code §§ 27156 and 38391]. This product is sold only for use in connection with EPA certified, purpose-built, nonroad vehicles used solely for closed course, nonroad competition/racing and not used for any recreational purpose or on public highways or right of ways maintained by and open to the public. This product is sold only in connection with machines that do not fall under state and/or federal noise or emission standards/regulations. Purchasers who/that purchase this product represent and warrant that the product is purchased only in connection with EPA -certified, emission-regulations-exempt and noise-regulations-exempt competition/racing vehicles as interpreted under applicable state and/or federal law. Questions: Call Evolution Powersports at (715) 247-3862.

WE'D LOVE TO HEAR FROM YOU - LEAVE A REVIEW & STAY CONNECTED!   