



Can Am Commander 1000R Shift-Tek Clutch Kit

SKU(s): 402FC0027, 401FC0009

Included Parts

Shift-Tek Helix Assembly
Helix Wrench
Secondary Holder
6 Primary Clutch Weights

REQUIRED TOOLS

Belt Changing Tool
M6 Allen Socket
Ratchet
Clutch Compression Tool
17mm Socket
Torque Wrench
8 mm Socket
T-25 Socket
Red Loctite





Clutch Weight Removal and Installation

Step 1: Remove clutch cover and belt.

Step 2: OEM cam arm removal, use a T25 Torx bit on one end of the pin and an 8mm socket on the other and remove the nut.

Step 3: Remove the pin

Step 4: Use a magnet to retrieve the cam arm – be careful to save the washers that are installed on both sides of the arm – these will be needed if you ever use the stock weights again. They are NOT needed for the installation of the EVP weights.

Step 5: For removing the stock cam arms and installing the adjustable arms the clutch will have to be compressed slightly to slide the cam arms into place. See picture below on where to do this.

Step 6: To install the new cam arms, slide an arm into the location where the previous arm was installed. Use a magnet to position the arm so the pin can be reinstalled. Reinstall nut onto pin.



Installation of the Helix

Step 1: Remove the secondary clutch with a 17mm socket and impact, mount it into a clutch compression tool. With a sharpie make alignment marks on both sheaves. (Figure 1)

Step 2: Use 13mm socket to take 3 fasteners out of the helix and carefully loosen the spring compression tool to remove tension. (Figure 2)



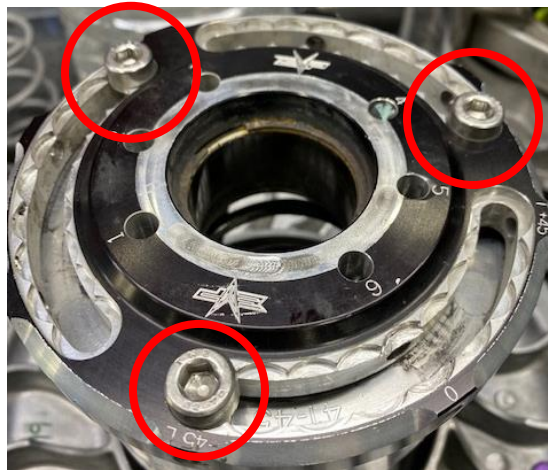
Figure 1



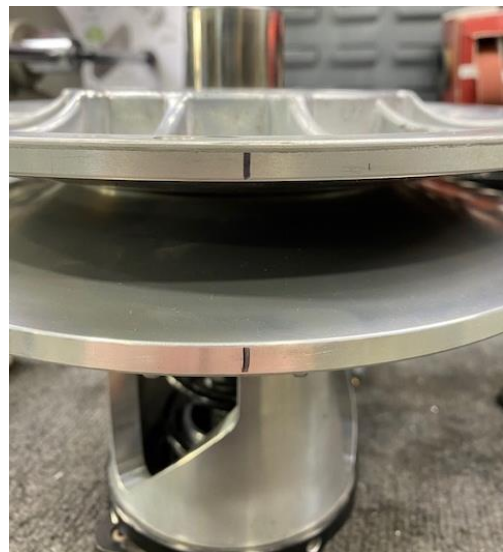
Figure 2

Step 3: Pull off both sheaves, remove spring cup and spring from the OEM helix.

Step 4: Grab the new helix, make sure the helix cap is adjusted to -45 degrees, if not loosen (3) Allen screws and clock the helix cap. Tighten the (3) Allen screws back down.



Step 5: Reassemble the secondary clutch on the clutch compression tool in this order: Helix assembly, place the spring in hole 4 of the spring cap, both sheaves in alignment. When compressing make sure the rollers are in line with the helix ramps. You may need to adjust with your hands while compressing.



Step 6: Apply Red Loctite onto the threads of the (3) 13mm bolts holding the helix to the sheaves.

Step 7: Reinstall the clutch on the vehicle and torque secondary bolt to 52 ft-lbs.



INSTALLATION INSTRUCTIONS

Step 8: Install the secondary holding tool onto the secondary, align the tool in between the fins. Allow the handle to rest against the primary bearing.



Step 9: Install the helix wrench into a slot around the Shift-Tek helix cap.



Step 10: Loosen all (3) M6 Allen head cap screws (do not remove). Apply pressure onto the helix wrench. You can now turn the helix cap to add or subtract torsion pressure on the spring. Once complete tighten the (3) M6 Allen head cap screws.



Step 11: Remove the helix wrench and secondary holder. Install the belt back onto the clutches. Remove the belt changing tool and spin the secondary a total of 5 times.



INSTALLATION INSTRUCTIONS

Thank you for choosing Evolution Powersports products. If you require further assistance, please call our Tech Support @ (715) 247-3862

Note: This product is exempt from the emission standards and related requirements of 40 C.F.R. § 1051 as provided by 40 C.F.R. § 1051.620, and California law [e.g., vehicle code §§ 27156 and 38391]. This product is sold only for use in connection with EPA certified, purpose-built, nonroad vehicles used solely for closed course, nonroad competition/racing and not used for any recreational purpose or on public highways or right of ways maintained by and open to the public. This product is sold only in connection with machines that do not fall under state and/or federal noise or emission standards/regulations. Purchasers who/that purchase this product represent and warrant that the product is purchased only in connection with EPA -certified, emission-regulations-exempt and noise-regulations-exempt competition/racing vehicles as interpreted under applicable state and/or federal law. Questions: Call Evolution Powersports at (715) 247-3862.

WE'D LOVE TO HEAR FROM YOU - LEAVE A REVIEW & STAY CONNECTED!   