

# HOLBORN VILLAGE AT HIGH CROSSING

## CONDOMINIUM PLAT-DANE COUNTY

### WILLIAMSON SURVEYING

2603007

Office of Register of Deeds  
 State of Wisconsin  
 Received for Record March 20  
 at 11:32 AM A  
 and recorded in vol. 2-4986  
 of Book Plat pages 1-5  
Open Book

**NOTES:**

All stoops, porches and patios are limited common elements. All P-DR (Private Driveways) are limited common elements for the units they are serving.  
 Area computations are based on architectural plan dimensions and do not supersede unit boundaries as set forth in the condominium declaration.  
 All other area not designated as limited common area is common area.

**DESCRIPTION:**

Lot 2, Certified Survey Map No. 7118, recorded in Volume 36 of Dane County Certified Surveys on pages 76,77,78 and 79 as Document No. 2472773 being part of the NW 1/4 of the NW 1/4 of Section 26 and also part of the NE 1/4 of the NE 1/4 of Section 27 all in T8N, R10E, City of Madison, Dane County, Wisconsin.

**SURVEYOR'S CERTIFICATE:**

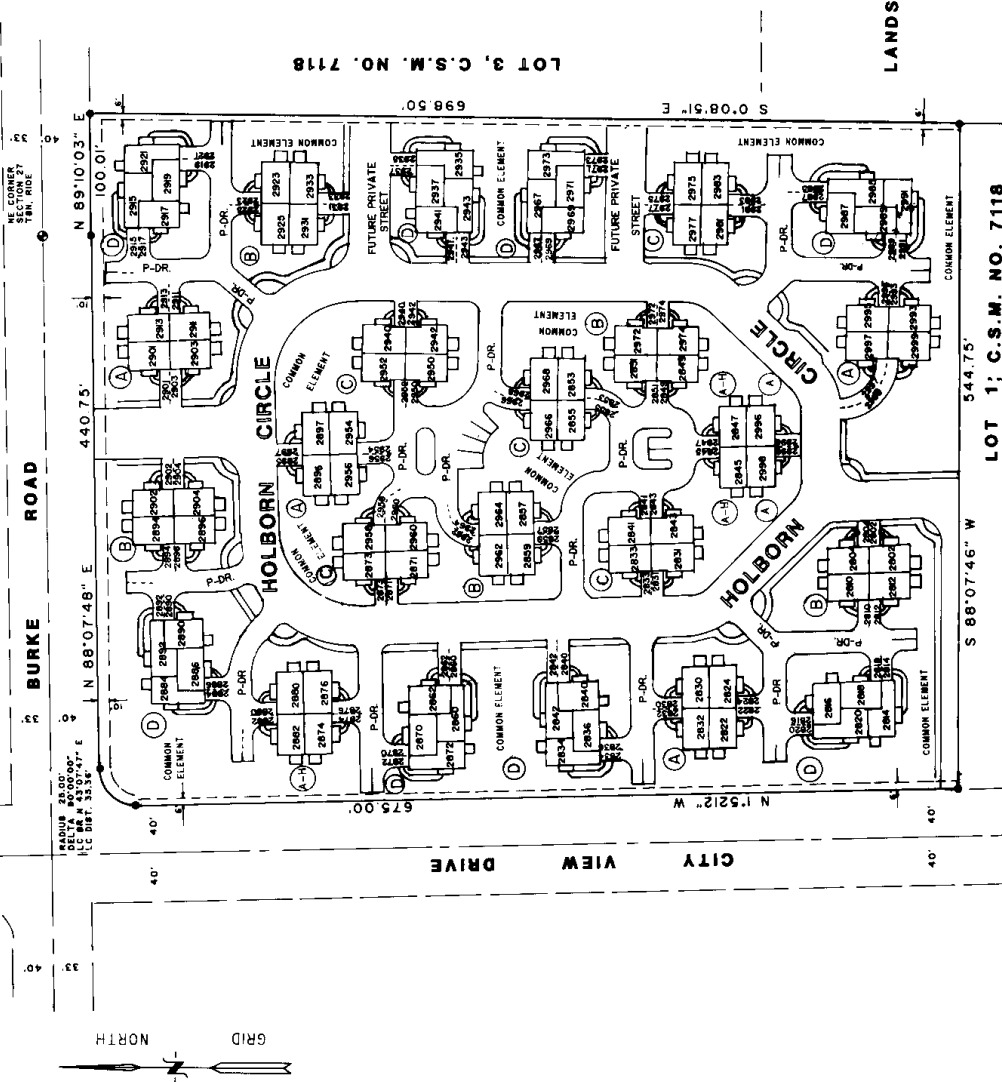
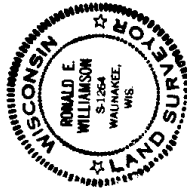
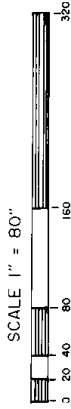
I, Ronald E. Williamson, Registered Land Surveyor, hereby certify that this plat is a correct representation of the condominium described and to be constructed and the identification and location of the unit and the common and limited common elements can be determined from the plat.

Date May 12, 1994  
 Ronald E. Williamson  
 Registered Land Surveyor S-1264

**LEGEND**

- - FOUND 1/4" IRON PIPE
- Ⓐ - DESIGNATED BUILDING LETTER

P-DR - PRIVATE DRIVEWAY



LOT 1; C.S.M. NO. 7118

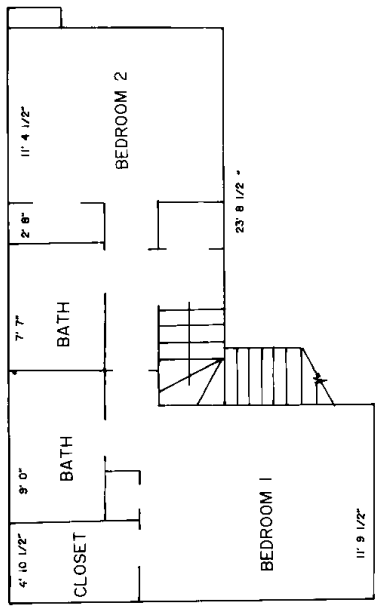
LOT 3, C.S.M. NO. 7118

LANDS

# HOLBORN VILLAGETHIGH CROSSING

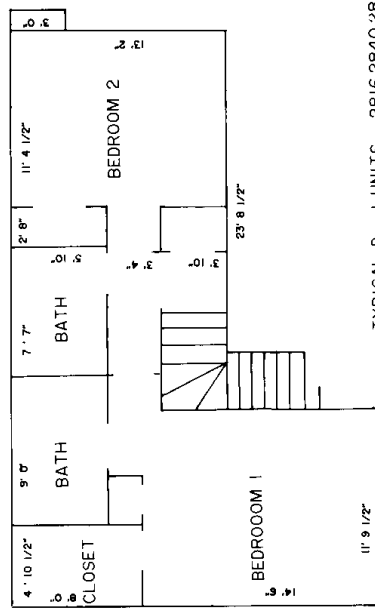
CONDOMINIUM PLAT  
DANE COUNTY SURVEYING  
WILLIAMSON SURVEYING

SECOND FLOOR 607 SQ. FT



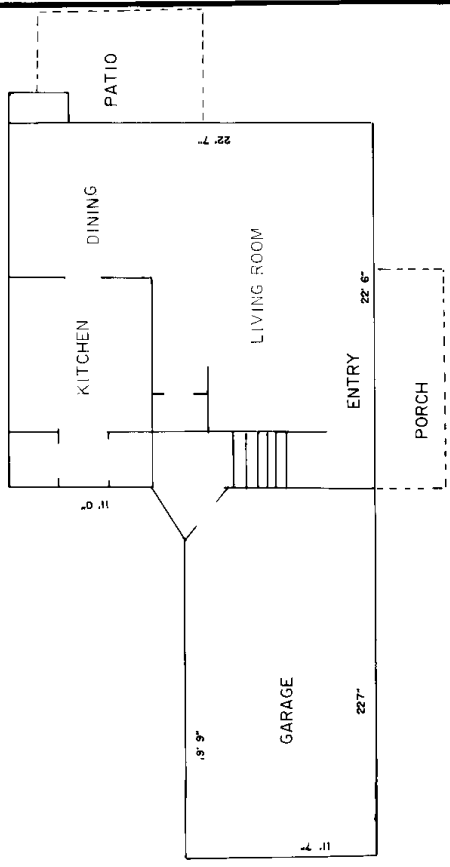
TYPICAL D. - 2 UNITS - 2814,2834,2872,2884  
2921,2935,2973,2991.

SECOND FLOOR 607 SQ.FT.



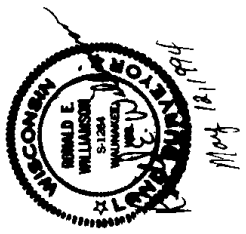
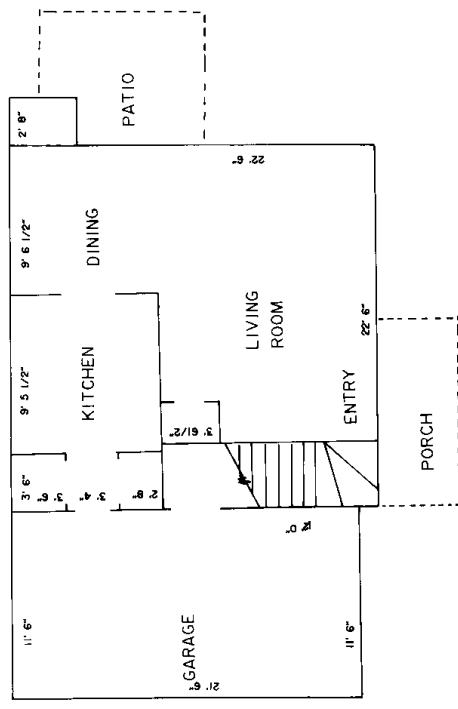
TYPICAL D. - 1 UNITS - 2816,2840,2862,2890,  
2917,2941,2969,2987.

FIRST FLOOR 755 SQ. FT.



SHEET 4 OF 5  
94W - 102

FIRST FLOOR 753 SQ.FT.

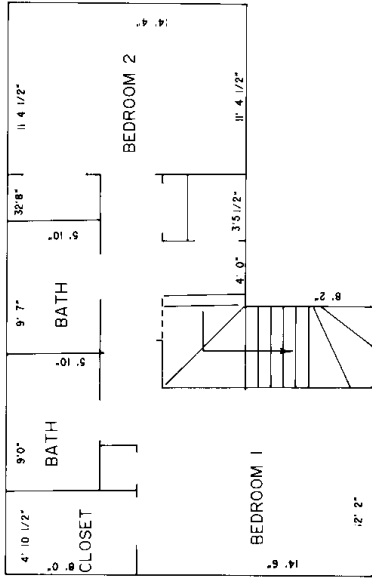


# HOLBORN VILLAGE AT HIGH CROSSING

## CONDOMINIUM PLAT - DANE COUNTY

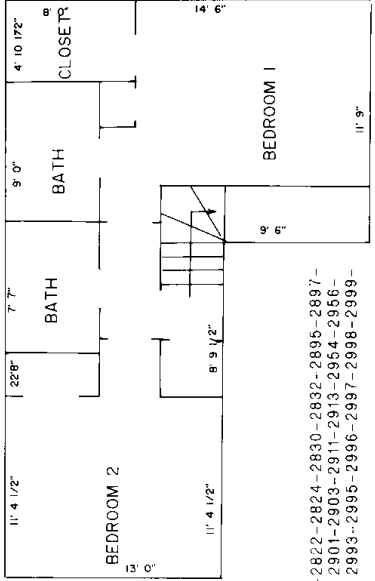
WILLIAMSON SURVEYING

607 SQ. FT.  
SECOND FLOOR



SCALE 1" = 6'

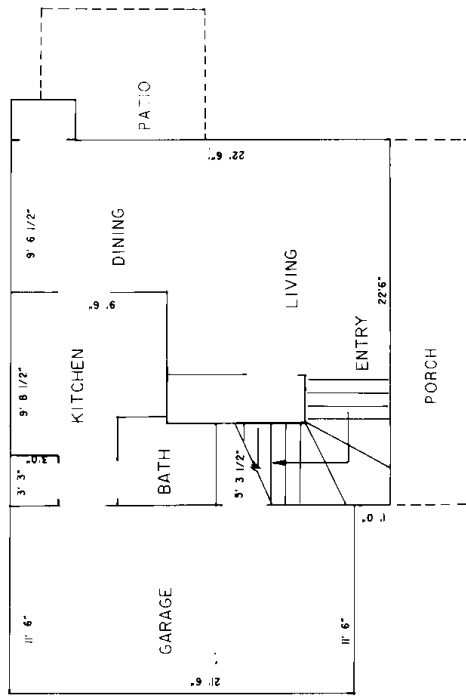
607 SQ. FT.  
SECOND FLOOR



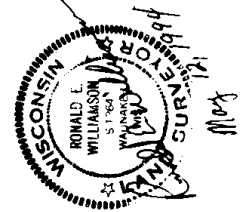
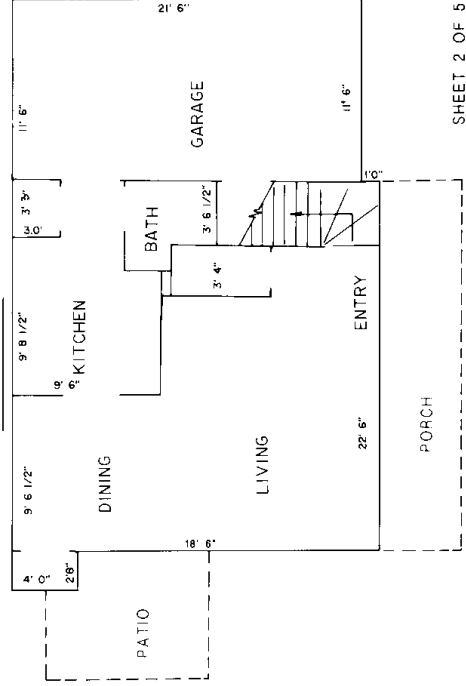
TYPICAL "A" UNITS - 2822-2824-2830-2832-2895-2897-2901-2903-2911-2913-2954-2956-2993-2995-2996-2997-2998-2999-

TYPICAL "A-H" UNITS - 2845-2847-2874-2876-2880-2882

753 SQ. FT.  
FIRST FLOOR



753 SQ. FT.  
FIRST FLOOR

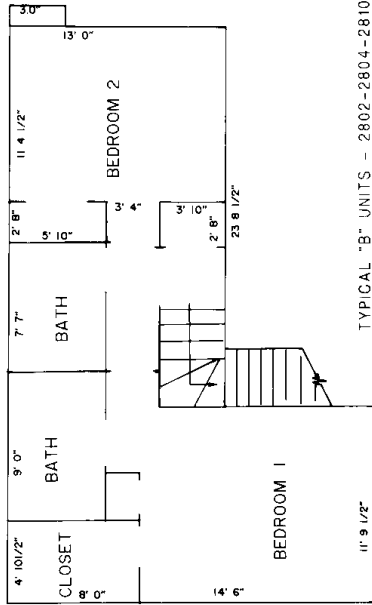


# HOLBORN VILLAGE AT HIGH CROSSING

CONDOMINIUM PLAT-DANE COUNTY

WILLIAMSON SURVEYING

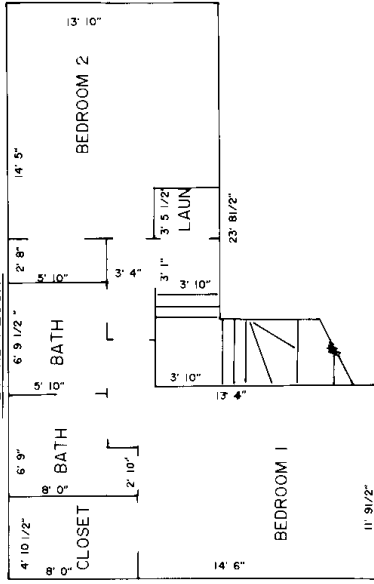
607 SQ. FT.  
SECOND FLOOR



SCALE 1" = 6'

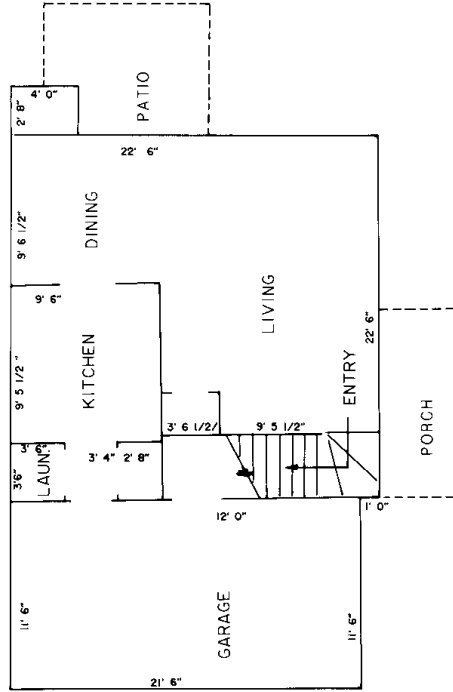
TYPICAL "B" UNITS - 2802-2804-2810-2812-2849-2851-2857-2859-2884-2886-2802-2804-2923-2925-2931-2933-2962-2964-2972-2974

607 SQ. FT.  
SECOND FLOOR

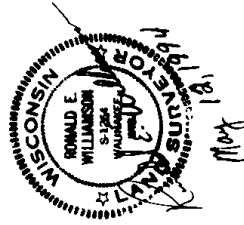
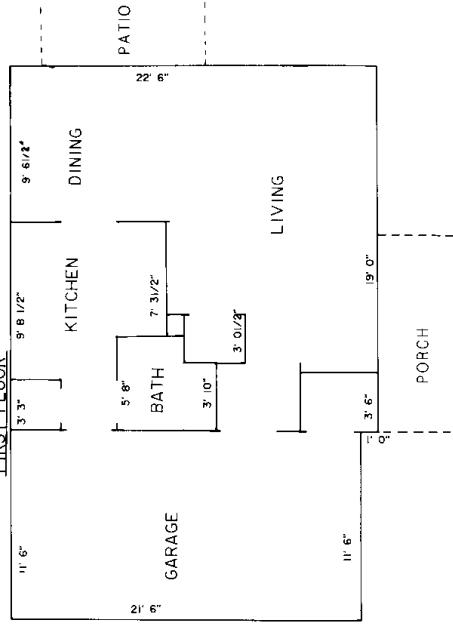


TYPICAL "C" UNITS - 2831-2833-2841-2843-2853-2855-2871-2873-2940-2942-2950-2952-2958-2960-2966-2968-2975-2977-2981-2983

753 SQ. FT.  
FIRST FLOOR



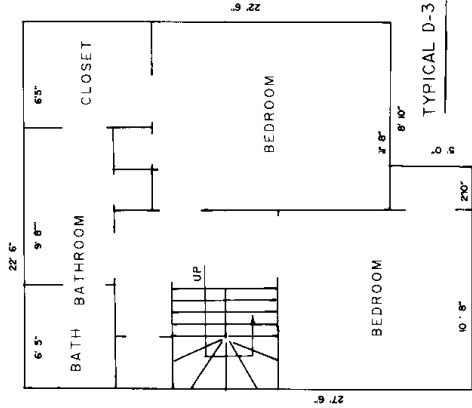
753 SQ. FT.  
FIRST FLOOR



# HOLBORN VILLAGE AT HIGH CROSSING

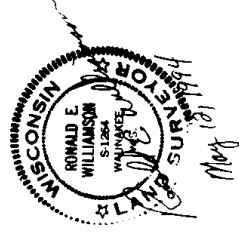
574 SQ. FT.  
 CONDOMINIUM PLAT - DANE COUNTY  
 WILLIAMSON SURVEYING

574 SQ. FT.  
 SECOND FLOOR

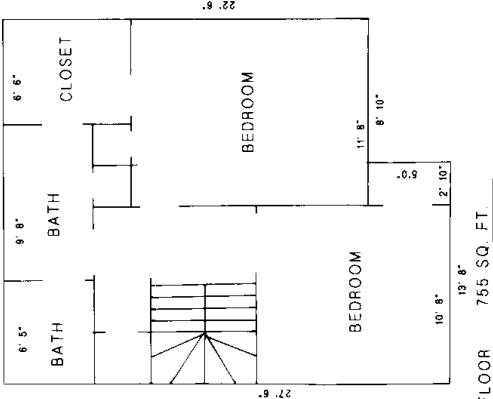


TYPICAL D-3 UNITS - 2818-2836-2870-2886-2937-2919-2971-2989

SCALE 1" = 6'

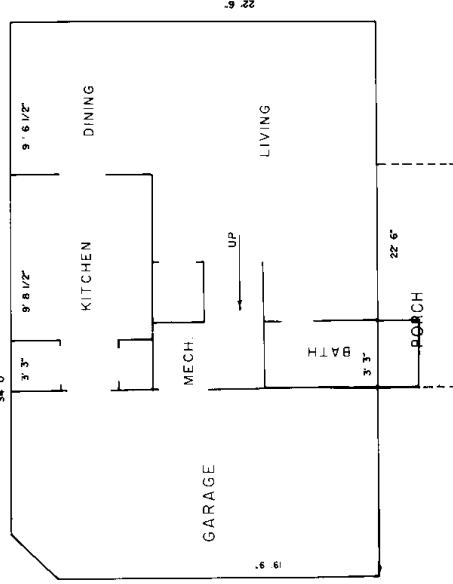


574 SQ. FT.  
 SECOND FLOOR



TYPICAL D-4 UNITS - 2820-2842-2860-2892-2915-2943-2967-2985

FIRST FLOOR 784 SQ. FT.



FIRST FLOOR 755 SQ. FT.

