

Cane-line Tex®

Material, Maintenance & Storing



Material

Cane-line Tex® is a coated polyester material, which is ideal for outdoor use and requires minimal maintenance.

Cushions made from Cane-line Tex® come with a QuickDryFoam® core, ensuring maximum drainage and air circulation. This allows the cushions to dry faster after having been exposed to rain and moisture. The QuickDryFoam® core also has an anti-bacterial protection, reducing the risk of mould and mildew forming on the cushion.

Maintenance & cleaning

Because the product is used outdoor over extended periods of time, regular cleaning with a soft brush and soapy water is important. This ensures the removal of superficial soil and debris, such as leaves, berries, pollen and bird droppings, before they have a chance to build up and become more difficult to remove.

It is important to place your cushions in an upright position when not in use. This ensures optimum drainage, thereby minimising the risk of mould and mildew. The anti-bacterial protection in the cushion core is most effective with correct drainage of the cushion.

Please note, that despite the anti-bacterial protection, mildew can still form between the inner and outer covers, if the cushion is not properly drained or cleaned. In case of food or drink spills, wash the spot immediately with warm soapy water and allow the cushion to dry in an upright position. White Cane-line Tex®: White furniture is more delicate and prone to staining and thus requires more regular cleaning.

Cleaning stubborn stains

For stubborn stains or built-up soil, carefully wash with a recommended stain remover, such as Vanish (Vanish Oxi Action), and/or a high-pressure cleaner set at moderate.

It is a good idea to remove the core from the cover and wash and dry them separately. Make sure to clean both sides of the outer cover. Please note, that cushion covers are machine washable at 30°C.

Storing

There are several ways to properly store your furniture in autumn and winter months for maximum protection and to make spring cleaning easier.

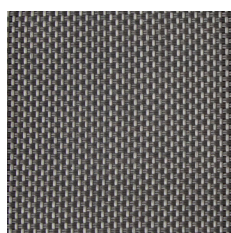
Furniture Frames

- 1) It is best to store furniture frames indoors.
- 2) Alternatively, they can be stored on a covered terrace, patio or carport, where they are protected from the elements.
- 3) Finally, furniture frames can be stored outdoors under a furniture cover. Please note, however, that condensation can form under the furniture cover, which can cause mould and mildew. Therefore, make sure to lift the cover away from the furniture frame to ensure proper air circulation and minimise condensation.

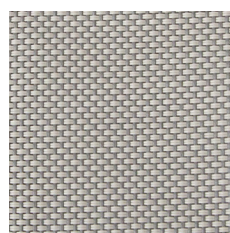
Furniture cushions

- 1) It is best to store cushions indoors in a ventilated room.
- 2) Alternatively, they can be stored in a cushion box on a covered terrace, patio or carport, protecting them from the elements and ensuring proper ventilation.
- 3) Do not store your cushions on the furniture frames if you live in a moist climate, as this can cause mould and mildew to form on the surface, making spring cleaning more difficult.

Variants



Grey (TXG)



Light grey (TXL)

For further questions, please contact info@cane-line.com or visit Cane-line.com

Cane-line®
- life made comfortable