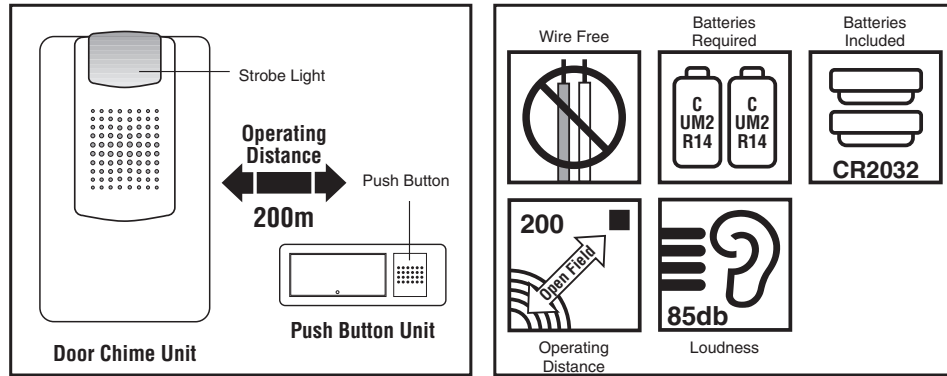


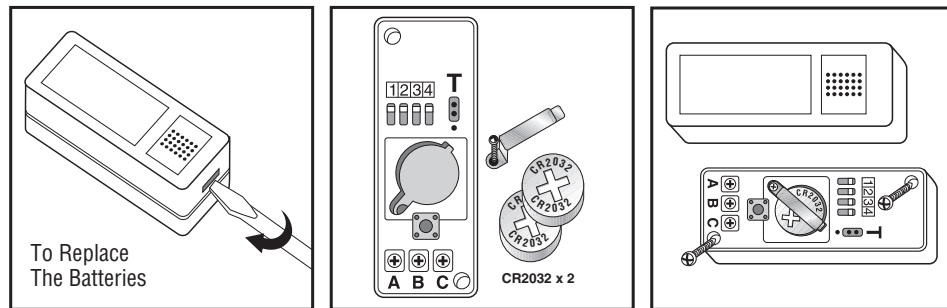
Byron Wire Free Portable Door Chime Kit with Strobe Light TX12 & TX14



No wiring is required for this Wire Free Door Chime Kit. When the Push Button is pressed, it sends a wire free signal to the door chime unit that activates the chime. As the operating range is up to 200 metres (640 ft. approx. - in open field), you can mount or take the door chime virtually anywhere in the home. However, the transmission range of the wire free signal will be reduced if the signal is transmitted through a number of walls or ceilings. Metal and UPVC doorframes will also reduce the operating range.

Push Button Unit

2 x 3volt Lithium batteries (CR2032) have already been installed. Your Push Button is ready to use.



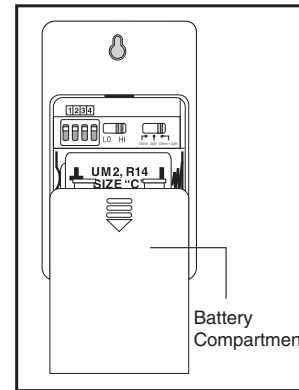
Remove the back of the case by pushing in the tab on the side with a small, flat screw driver.

Remove the locking screw from the battery fastener. Insert 2 x 3 volt CR2032 Lithium batteries (Byron SX-100) in the battery compartment, ensuring the battery polarity matches the internal markings, then tighten the screw on the battery fastener to hold the batteries firm in it's compartment.

Using the two holes on the back of Push Button as a template, mark the fixing position for the unit. Drill holes and fit wall plugs and secure the Push Button unit with screws (self tapping N3 x 16mm screw).



Door Chime with Strobe Light Unit

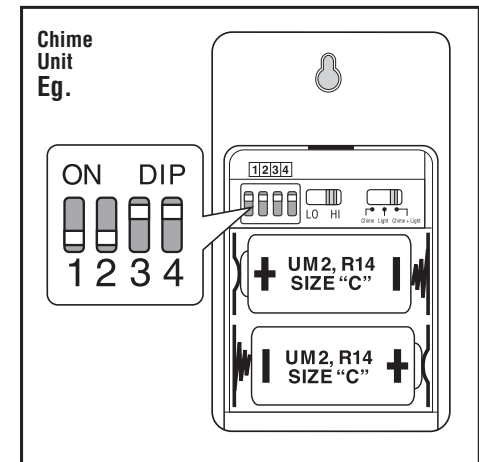
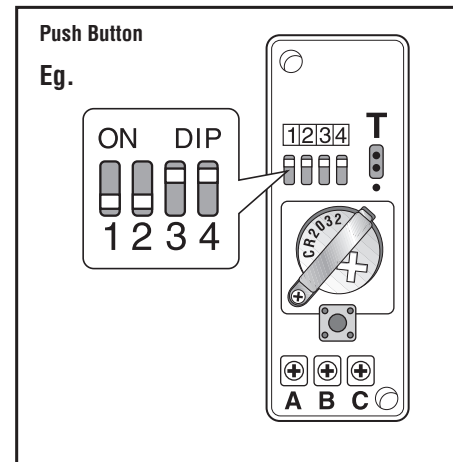


Slide open the battery compartment door. Insert 2 x 1.5 volt alkaline batteries ("C", UM2, R14 - not included) into the battery compartment, ensuring the battery polarity matches the internal markings. It will beep twice to indicate that it is ready for new operation code registration (Please see Digital Code Set Up). Close the battery door, then the chime unit is ready to use.

It has a slotted hang hole on the rear of the unit, this will enable the chime unit to be hooked onto a screw and easily removed or relocated to another room. Drill hole and fit wall plug (if fixing to masonry) and screw (self-tapping 3 x 16mm screw) to fixing position. Leave a gap of 3mm between the screw head and the wall. Locate the keyhole slot on the back of the unit over the screw.



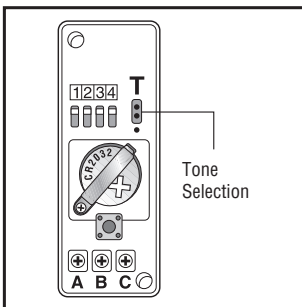
Digital Code Set Up



The unit comes from the factory on a pre-set radio frequency digital code. However, should your door chime activate intermittently for no reason at all, it is possible that a similar unit is operating nearby on the same frequency digital code. The encoded frequency of the Push Button (transmitter) and be changed to avoid this problem. The Door Chime unit is equipped with advanced self-learning operation code ability therefore no setting is needed.

- Push Button unit:** Remove the back of the case by pushing in the tab on the bottom with a small, flat screwdriver.
- Door Chime Unit:** Slide open the battery compartment.
- There is a 4 position dipswitch marked 1,2,3 & 4. Use an insulated tool to alter the dip switch levers to the "ON/Off" position, which can be altered to achieve a total of sixteen (16) possible digital codes.
- Select any combination ensuring it is set to the same code on both Push Button and Door Chime units. E.g. If the 1st & 2nd dipswitches are down in your Push Button, then 1st & 2nd dipswitches must be down in your chime unit.
- Test to ensure correct operation before final installation.

Tone Selection



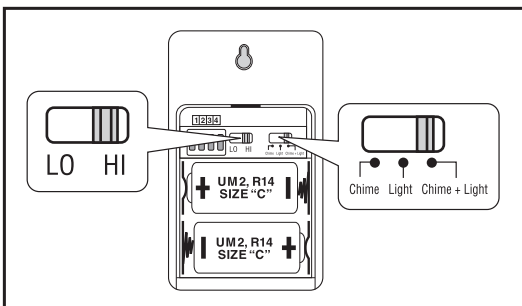
The tone selector is located inside the push button unit, a small jumper switch on the top right corner of the battery compartment marked with "T". When a jumper switch is added onto the 2 pins on the top, the tone will change from "Westminster" tone to "Ding-Dong". The push button is pre-set to "Westminster" therefore, if no change is required, it should not be adjusted.

Additional Byron "TX" range products can be purchased for compatibility.

Door Chime Operation

When the Push Button is pressed, it sends a wireless signal to the Door Chime and it will sound as well as the Strobe Light flashing for about 10 seconds. The sound and light will stop as soon as the melody ends. For repeat sound, press the button again. Holding the button in will **NOT** repeat the sound.

Sound Volume Adjustment



The sound volume control can be adjusted to high or low, the high-low switch is located in the battery compartment of Door Chime unit

Strobe Light Operation

When the door chime sounds, the strobe light on the front will also flash, which will stay on for about 10 seconds to maximizing attention. However, if Strobe light function is not required, you can switch it off. There is a 3-ways switch, you can select to operate it into the following ways:

- Chime and Light:** Door Chime will sound as well as the Strobe Light flashing to maximizing attention.
- Light Only:** The Strobe Light on the Door Chime unit will flash.
- Chime Only:** Door Chime unit will sound.

The function selector is located in the battery compartment of the unit, simply slide the switch to the desired function, the chime unit will operate accordingly.

Important

- Do not mount either unit close to fireplace or expose to high temperatures.
- Do not expose the Door Chime unit to direct sunlight or moisture.
- Always use alkaline battery. Please dispose of old, defective batteries in an environmentally friendly manner in accordance with the relevant legislation.
- Make sure that no naked flame sources, such as lighted candles, should be placed on the unit.
- The unit should not be exposed to dripping or splashing and that no objects filled with liquids, such as vases, shall be placed on the unit.
- CAUTION:** Replace only with the same or equivalent type of battery that are recommended by the manufacturer.
- CAUTION:** Danger of explosion if battery is incorrectly installed or replaced.

Trouble Shooting & User Hints

Problem	Possible Causes	Suggested Remedy
Chime does not sound but LED lights on Push Button	<ol style="list-style-type: none"> Units are out of range (max. range 200m) Push Button and chime units are not on same digital code 	<ol style="list-style-type: none"> Operate the Chime unit within the operation range (200m) Re-set the digital code (see Digital Code Set Up)
Chime does not sound plus no lights on Push Button LED	<ol style="list-style-type: none"> Flat Converter battery Wrong polarity of battery in converter 	<ol style="list-style-type: none"> Change the battery Re-insert battery as internal marking in right polarity
Chime sounds without Push button being pressed	A similar wirefree door chime product is operating nearby on the same frequency digital code	Change the digital code (see Digital Code Set Up)

Important: There are no serviceable parts in the unit, do not attempt to repair it.

Specification

A. Push Button Unit

Power : 2 x 3 volt Lithium battery (CR2032 - included)
 Consumption : 7.0mA - ON
 0.003mA - OFF

B. Door Chime unit

Power : 2 x 1.5volt batteries ("C", UM2 or R14 - not supplied)
 Consumption : Chime only - 100mA,
 Strobe Light only - 200mA,
 Chime + Strobe Light - 280mA
 0.3mA - Stand-by

Operating Temperature : -10°C to +40°C
 Operating Distance : 200 metres (640 feet approx.) in open field
 Selectable Tone : "Westminster" & "Ding-Dong"
 Selectable Digital Code : Total sixteen (16) possible digital codes
 strobe Light : Flash about 8 times in 10 seconds

Type R2 Device - device where the sound output is created by the initial operation of the control and where the period of sound output continues for designed duration irrespective of condition of the control.

CE 0681

