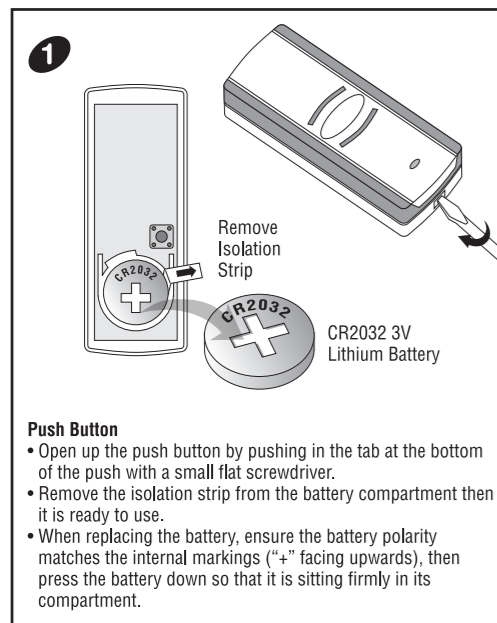
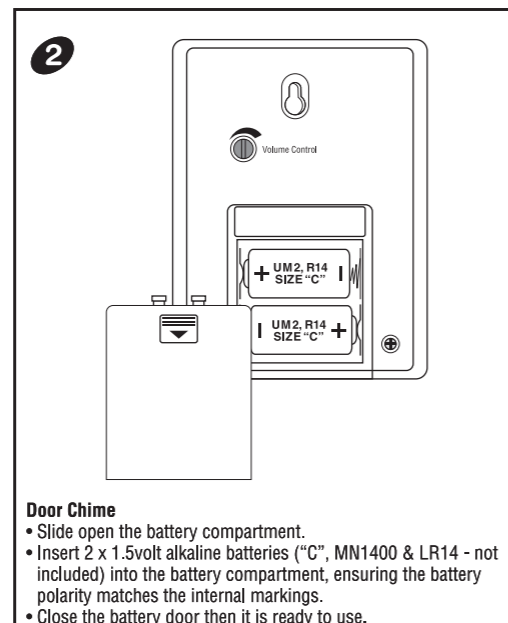


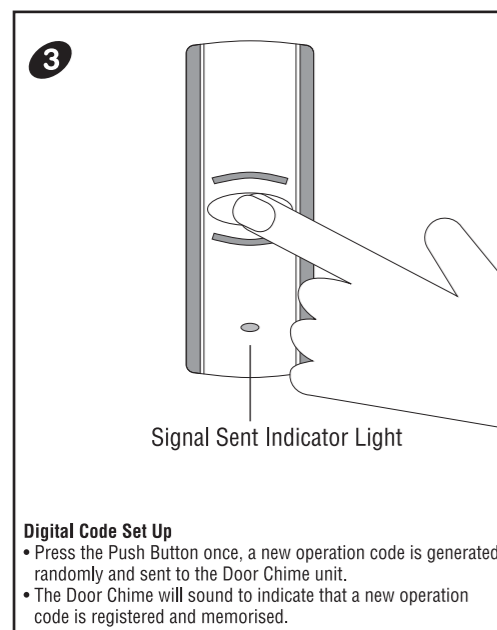
Wire Free Recordable MP3 Chime Kit SX-225/SX-226



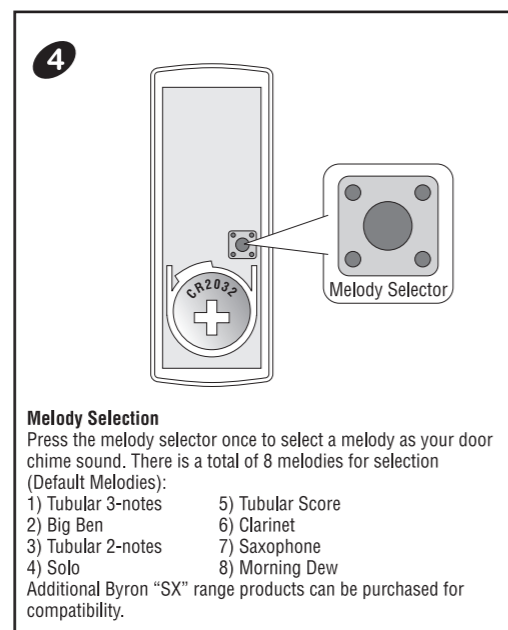
- Push Button**
- Open up the push button by pushing in the tab at the bottom of the push with a small flat screwdriver.
 - Remove the isolation strip from the battery compartment then it is ready to use.
 - When replacing the battery, ensure the battery polarity matches the internal markings ("+" facing upwards), then press the battery down so that it is sitting firmly in its compartment.



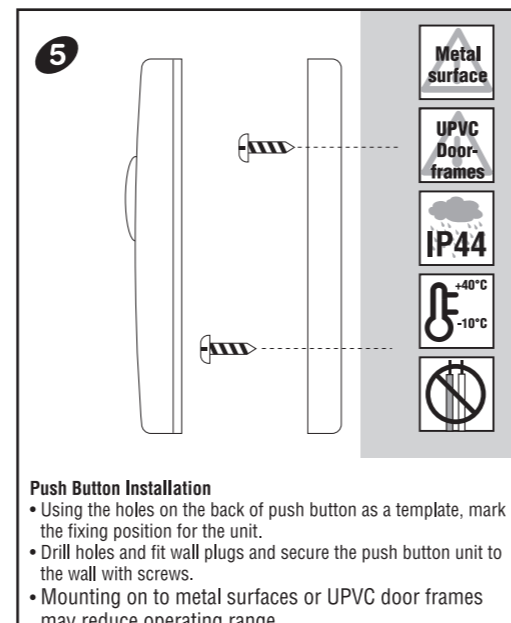
- Door Chime**
- Slide open the battery compartment.
 - Insert 2 x 1.5volt alkaline batteries ("C", MN1400 & LR14 - not included) into the battery compartment, ensuring the battery polarity matches the internal markings.
 - Close the battery door then it is ready to use.



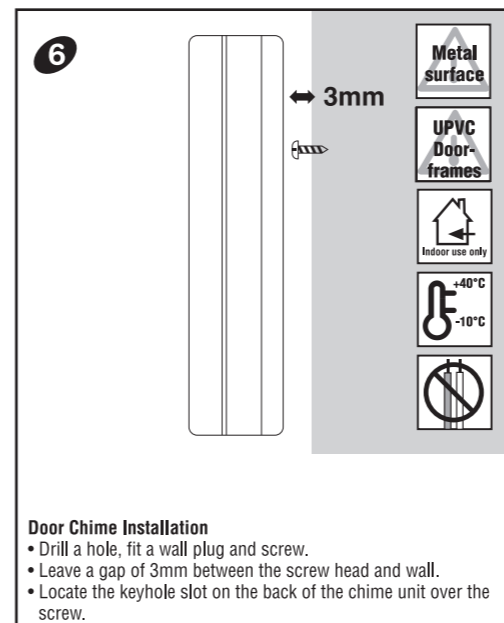
- Digital Code Set Up**
- Press the Push Button once, a new operation code is generated randomly and sent to the Door Chime unit.
 - The Door Chime will sound to indicate that a new operation code is registered and memorised.



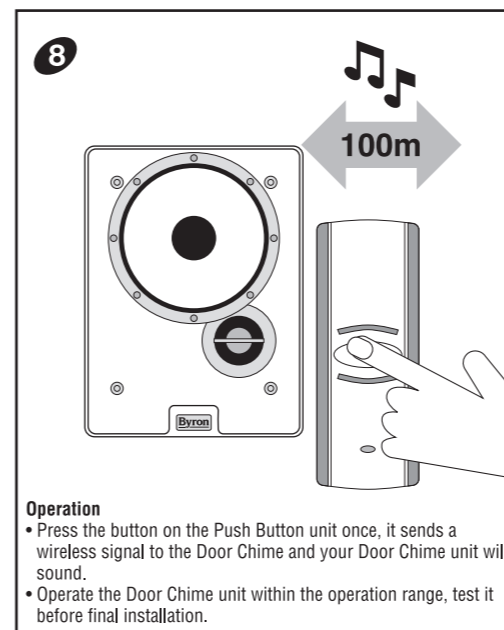
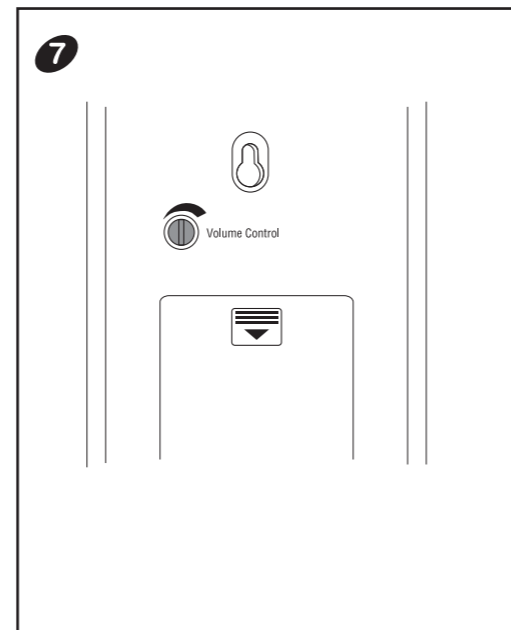
- Melody Selection**
- Press the melody selector once to select a melody as your door chime sound. There is a total of 8 melodies for selection (Default Melodies):
- | | |
|--------------------|------------------|
| 1) Tubular 3-notes | 5) Tubular Score |
| 2) Big Ben | 6) Clarinet |
| 3) Tubular 2-notes | 7) Saxophone |
| 4) Solo | 8) Morning Dew |
- Additional Byron "SX" range products can be purchased for compatibility.



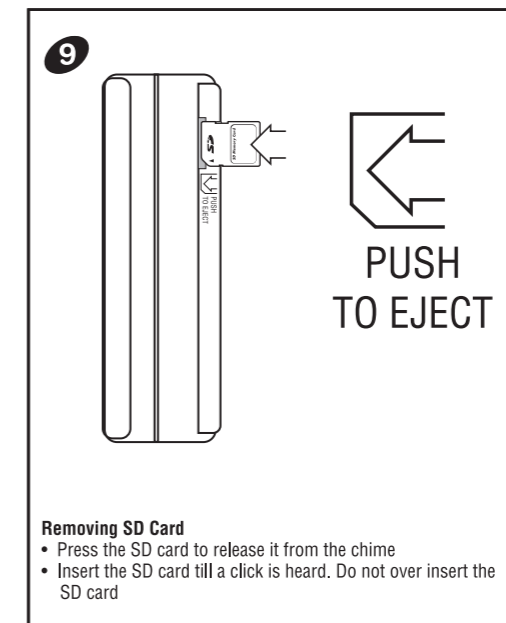
- Push Button Installation**
- Using the holes on the back of push button as a template, mark the fixing position for the unit.
 - Drill holes and fit wall plugs and secure the push button unit to the wall with screws.
 - Mounting on to metal surfaces or UPVC door frames may reduce operating range.



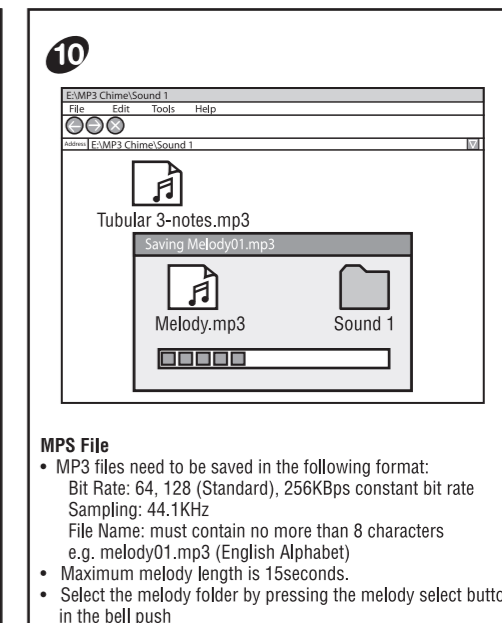
- Door Chime Installation**
- Drill a hole, fit a wall plug and screw.
 - Leave a gap of 3mm between the screw head and wall.
 - Locate the keyhole slot on the back of the chime unit over the screw.



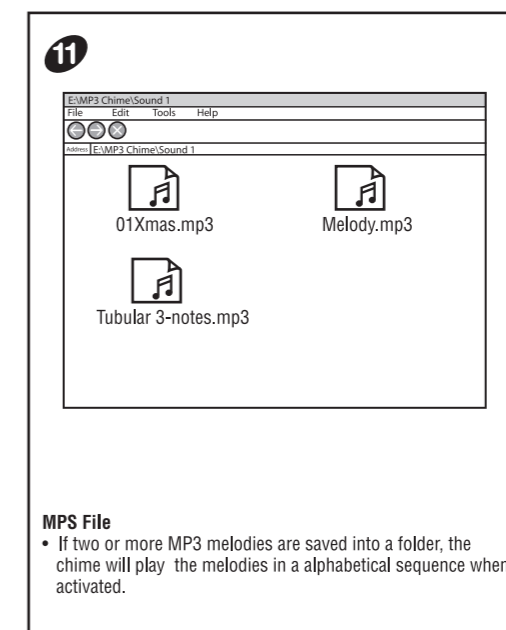
- Operation**
- Press the button on the Push Button unit once, it sends a wireless signal to the Door Chime and your Door Chime unit will sound.
 - Operate the Door Chime unit within the operation range, test it before final installation.



- Removing SD Card**
- Press the SD card to release it from the chime
 - Insert the SD card till a click is heard. Do not over insert the SD card



- MPS File**
- MP3 files need to be saved in the following format:
Bit Rate: 64, 128 (Standard), 256Kbps constant bit rate
Sampling: 44.1KHz
File Name: must contain no more than 8 characters
e.g. melody01.mp3 (English Alphabet)
 - Maximum melody length is 15seconds.
 - Select the melody folder by pressing the melody select button in the bell push



- MPS File**
- If two or more MP3 melodies are saved into a folder, the chime will play the melodies in a alphabetical sequence when activated.

Push Button unit

Power: 1 x 3volt Lithium battery (CR2032 - included)

Door Chime unit

Power: 2 x 1.5volt alkaline batteries ("C", MN1400 & LR14 - not included)

Melody Selection

There are 8-melodies for selection:

- | | |
|--------------------|------------------|
| 1) Tubular 3-notes | 5) Tubular Score |
| 2) Big Ben | 6) Clarinet |
| 3) Tubular 2-notes | 7) Saxophone |
| 4) Solo | 8) Morning Dew |

Additional Byron "SX" range products can be purchased for compatibility.

Digital Code Set Up

The Door Chime kit is equipped with an advanced and self-learning coding ability therefore no code setting is needed. Read the following instructions before use.

1. First time operation:

Insert the batteries into the Push Button and the Door Chime unit/s. Press the Push Button once, it will generate a new operating code randomly and send a wireless signal to the Door Chime and it will sound to indicate that new operation code is registered and memorised.

2. Interference from a similar Wire Free unit operating nearby:

a) Simply remove the batteries from the Push Button and Door Chime unit/s and wait for 10 seconds, this will erase the memory.

b) Insert the batteries into the Push Button and the Door Chime unit/s. Press the Push Button once, it will generate a new operating code randomly and send a wireless signal to the Door Chime and it will sound to indicate that new operation code is registered and memorised.

3. Front and back door Bell Push operation:

a) Remove the batteries from the Push Buttons (Front & Back Door) and Door Chime unit/s and wait 10 seconds, it will erase the memory.

b) Insert the batteries into the Push Buttons and Door Chime unit/s.

c) Press the front door Push Button once, it will generate a new operation code randomly and send a wireless signal to the door chime unit and it will sound to indicate that a new operation code is registered and memorised.

d) After, (within 2 minutes) press the back door Push Button once, it will generate a new operation code randomly and send a wireless signal to the door chime unit and it will sound to indicate that new operation code is registered and memorised. The door chime unit has the ability to memorise both operation codes.

e) Test to ensure correct operation before final installation.

Adjust the volume

Use a small flat screwdriver to adjust the sound volume.

Downloading MP3 Sounds:

The SD Memory Card Is pre-programmed with 8 default sounds, each sound is saved in a separate folder sound 1, sound 2sound 8. Press the melody selector in the push button once to select the next pre-programmed melody folder saved on the SD card.

To download your own MP3 melodies to the door chime:

- Place the SD card into a compatible SD card reader
- Open the sound file to be changed, replace the mp3 file with the new MP3 melody. It is recommended to save the pre-programmed melody for future use.
- MP3 files need to be saved in the following format:
Bit Rate: 64, 128 (Standard), 256Kbps constant bit rate
Sampling: 44.1KHz
File Name: must contain no more than 8 characters e.g. melody12.mp3 (English Alphabet)
- Maximum melody length is 15seconds.
- Select the melody folder by pressing the melody select button in the bell push

- If two or more MP3 melodies are saved into a folder, the chime will play the melodies in a alphabetical sequence when activated

Editing MP3 Files:

Additional software is required for editing MP3 files to the required duration and bit rate, Byron's recommends the following software packages:

- | | |
|------------------------|---|
| a) Goldwave (PC only) | www.goldwave.com/ |
| b) Audacity (PC & Mac) | http://audacity.sourceforge.net/ |

The recommends editing programs and websites are not part of Byron Electrical Ltd. Byron's is not responsible for the content of external internet sites, links or downloaded software.

Important

- Do not mount either unit close to a fireplace or expose to high temperatures.
- Do not expose the Door Chime unit to direct sunlight or moisture
- Always use alkaline battery. Please dispose of old, defective batteries in an environmentally friendly manner in accordance with the relevant legislation.
- Make sure that no naked flame sources, such as lighted candles, should be placed on the unit.
- The unit should not be exposed to dripping or splashing and no objects filled with liquids, such as vases, should be placed on the unit.
- CAUTION:** Replace only with the same or equivalent type of battery that is recommended by the manufacturer.
- CAUTION:** Make sure batteries are installed correctly as per the internal markings.
- IMPORTANT:** There are no serviceable parts in the units, do not attempt to repair it.

Trouble Shooting & User Hints

If the door chime unit does not sound, please check the following:

- Flat batteries in either Push Button or Door Chime units - change the batteries.
- Wrong battery polarity in either Push Button or Door Chime units - re-insert the batteries.
- Push Button and Door Chime units are not on the same operation codes - re-set the code (see digital code set up).
- Units are out of range - Operate the Chime unit within the operation range

Specification

Operating Temperature: -10C - +40C

Operating Distance: 100metre (330ft approx. - in open field & at suitable condition)

Selectable Tone: Total Eight (8) melodies available

Digital Code: Total two hundred fifty six (256) possible digital codes

SD Card: Fat32 - 128MB Memory (Min)

"Type R2 Device - device where the sound output is created by the initial operation of the control and where the period of sound output continues for the designed duration irrespective of condition of the control."

