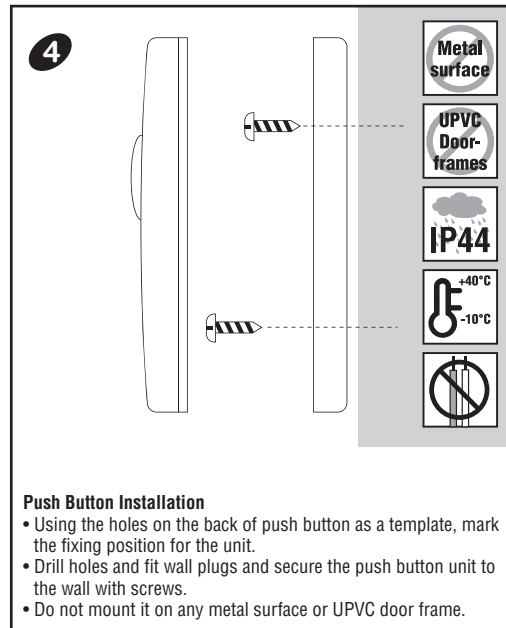
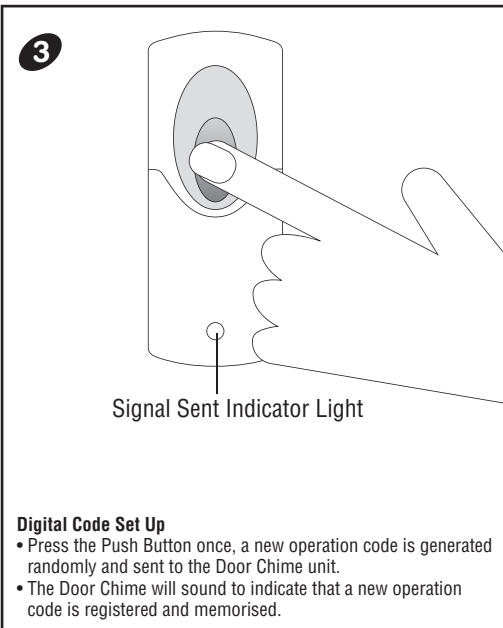
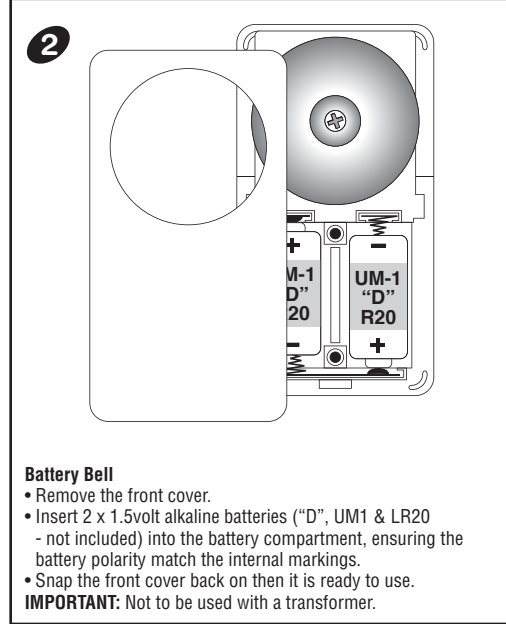
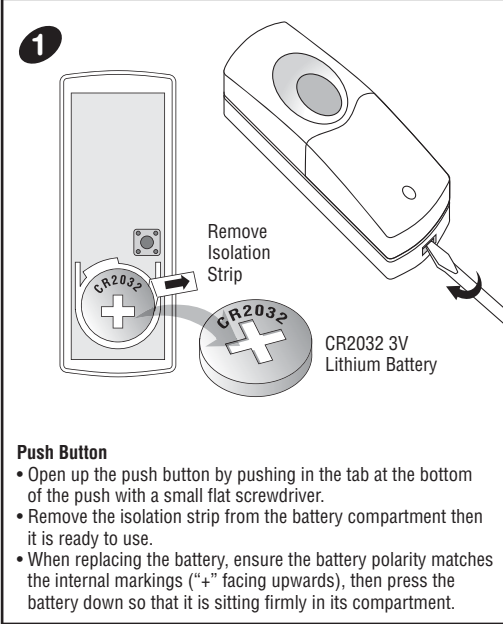


Wire Free Battery Bell Model SX-15i

SX-15i



Wire Free Battery Bell Kit

Push Button unit

Power: 1 x 3volt Lithium battery (CR2032 - included)

Door Chime unit

Power: 2 x 1.5volt alkaline batteries (“D”, UM1 & R20 - not included)

Door Chime Operation

Press the button on the Push Button once, it sends a wireless signal to the battery bell unit and it will sound. The sound will stop as soon as the melody ends. For repeat sound, press the button again. Hold the button in will **NOT** repeat the sound.

Digital Code Set Up

The Door Chime kit is equipped with an advanced random and self-learning operation coding ability therefore no setting is needed. Read the following instructions before use.

1. First time operation:

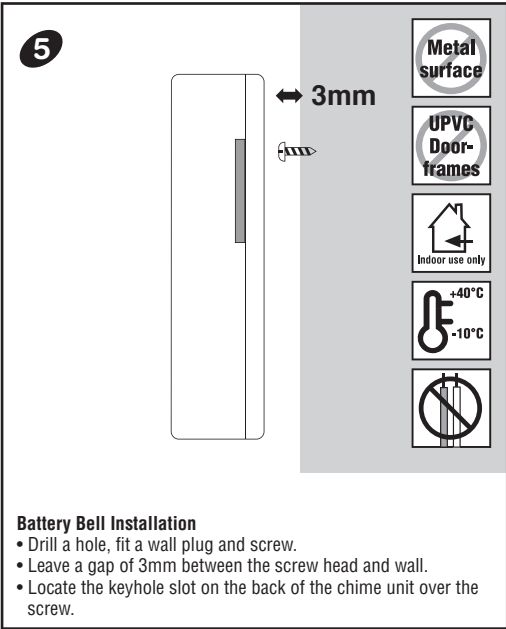
After battery installation on the Push Button and Door Chime units, press the Push Button once and it will generate a new operation code randomly and send a wireless signal to the Door Chime unit. The door chime unit will sound to indicate that new operation code is registered and memorised.

2. Interference from a similar unit operating nearby:

- Simply remove the batteries from the Push Button and Door Chime units and rest for 10 seconds, this will erase the memory.
- Insert the batteries into the Push Button and the Door Chime units. Press the Push Button once, it will generate a new operation code randomly and send a wireless signal to the Door Chime and it will sound to indicate that new operation code is registered and memorised.

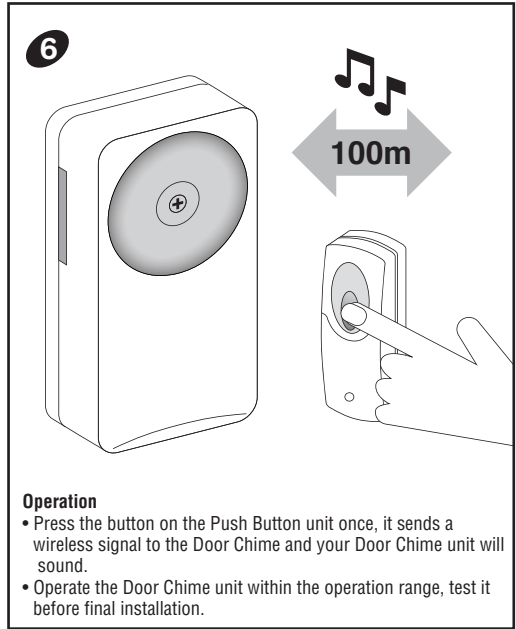
3. Front and back door Bell Push operation:

- Remove the batteries from the Push Buttons (Front & Back Door) and Door Chime units and rest for 10 seconds, it will erase the memory.
- Insert the batteries into the Push Buttons and Door Chime units.
- Press the front door Push Button once, it will generate a new operation code randomly and send a wireless signal to the door chime unit and it will sound to indicate that a new operation code is registered and memorised.
- After, (within 2 minutes) press the back door Push Button once, it will generate a new operation code randomly and send a wireless signal to the door chime unit and it will sound to indicate that new operation code is registered and memorised. The door chime unit has the ability to memorise both operation codes.
- Test to ensure correct operation before final installation.



Battery Bell Installation

- Drill a hole, fit a wall plug and screw.
- Leave a gap of 3mm between the screw head and wall.
- Locate the keyhole slot on the back of the chime unit over the screw.



Operation

- Press the button on the Push Button unit once, it sends a wireless signal to the Door Chime and your Door Chime unit will sound.
- Operate the Door Chime unit within the operation range, test it before final installation.

Important:

- Make sure new set of alkaline battery is used in first time operation.
- Make sure the batteries are installed properly and the battery polarities match the internal markings.
- Change the frequency digital codes if door chime activate intermittently for no reason at all (see digital set up).
- Do not use the Chime unit with transformer

Important

1. Do not mount either unit close to fireplace or expose to high temperatures.
2. Do not expose the Battery Bell unit to direct sunlight or moisture
3. Always use alkaline battery. Please dispose of old, defective batteries in an environmentally friendly manner in accordance with the relevant legislation.
4. Make sure that no naked flame sources, such as lighted candles, should be placed on the unit.
5. The unit should not be exposed to dripping or splashing and no objects filled with liquids, such as vases, should be placed on the unit.
6. **CAUTION:** Replace only with the same or equivalent type of battery that is recommended by the manufacturer.
7. **CAUTION:** Make sure batteries are installed correctly as per the internal markings.
8. **CAUTION:** Danger of explosion if battery is incorrectly installed or replaced.
9. **IMPORTANT:** There are no serviceable parts in the units, do not attempt to repair it.

Trouble Shooting & User Hints

If the door chime unit does not sound, please check the followings:

- a) Flat batteries in either Push Button or Battery Bell units - change the batteries.
- b) Wrong battery polarity in either Push Button or Battery Bell units - re-insert the batteries.
- c) Push Button and Door Chime units are not on the same operation codes - re-set the code (see digital code set up).
- d) Units are out of range - Operate the Battery Bell unit within the operation range.

Specification

Operating Temperature: -10C - +40C
 Operating Distance: 100metre (330ft approx. - in open field & at suitable condition)
 Digital Code: Total two hundred fifty six (256) possible digital codes

“Type R2 Device - device where the sound output is created by the initial operation of the control and where the period of sound output continues for the designed duration irrespective of condition of the control.”

CH Byron Electrical Ltd
 Byron House
 34 Sherwood Rd, Astonfield
 Bromsgrove, B60 3DR
 UK
 Tel: 0845 2301231
 e: support@chbyron.com
 w: www.chbyron.com



Byron 433MHz

R&TTE APPROVED **CE0681**

A	⌘	IRL	⌘	UK	⌘	M	⌘
B	⌘	I	⌘	BG	⌘	N	⌘
DK	⌘	L	⌘	CZ	⌘	SLO	⌘
FIN	⌘	NL	⌘	EST	⌘	SLO	⌘
F	⌘	P	⌘	H	⌘	CH	⌘
D	⌘	E	⌘	IS	⌘	PL	⌘
GR	⌘	S	⌘	LV	⌘	RO	⌘
LT	⌘						

CH Byron Electrical United Kingdom. www.chbyron.com