

HOME
easy

RE-INVENTING THE HOME

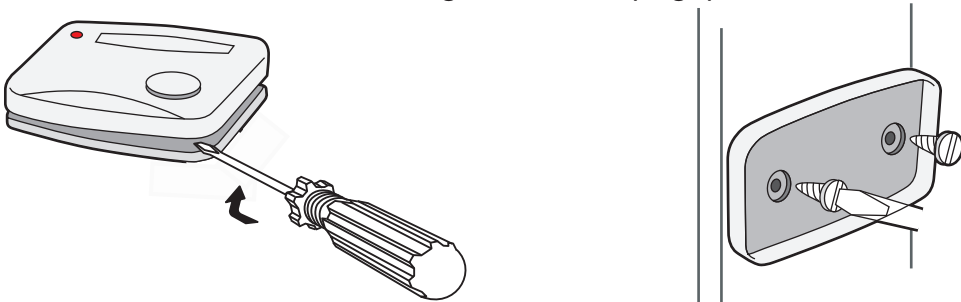
The HE-306 Plug-in Door Chime adds extra control to your HomeEasy products. When the bell push is pressed a wire free signal is sent to the plug-in door chime, activating the "Ding Dong" alert and a selectable light setting. The operating range of the HE-306 is up to 40metres (open distance), allowing you to plug the chime unit into virtually any socket in the home.

The transmission range of the wire free signal can be reduced if the signal is transmitted through a number of walls or ceilings. Metal surfaces and UPVC door frames can also affect the operating range.

Installation Guide:

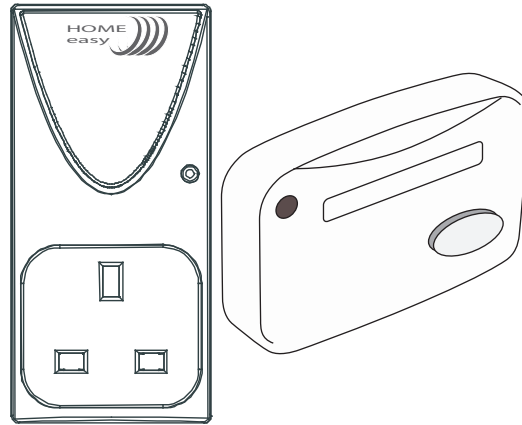
Important: mounting the bell push unit onto a UPVC door frame or metal surface will reduce the operating range and may cause the units to work intermittently.

1. The bell push can be attached to the door frame or adjacent brick surface using either the self adhesive tabs or using screws & wall plugs provided.

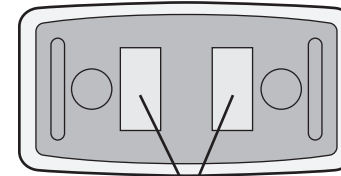


2. Unclip the cover from the bell push and using the 2 holes on the back of the Bell Push casing as a template (pierce holes as required), mark and drill the fixing holes and then attach the bell push using the screws provided.

HE-306 Home Easy Plug-In Door Chime



V1.0 Self Adhesive Strips: make sure the surface is free from dirt and grease. Remove the protective strips from the back of the bell push and push firmly against the door frame or wall.



Self Adhesive Strips

Setup :

When the bell push is pressed, the plug-in door chime receiver will sound alert and switch the On socket for between 2min and 20min. Ideal for switching on table light for added security (*Incandescent lighting only*).

Plug the plug-in chime into a standard 3 pin socket and switch the power on, the chime unit now needs to be paired with the bell push (See Pairing/Deleting Bell Push & Chime).

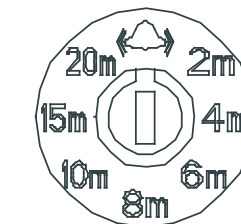
The plug-in chime has 7 timer settings and one visual alert. Using a small screwdriver rotate the dial on the back of the plug-in chime to select the required time.

Visual Alert

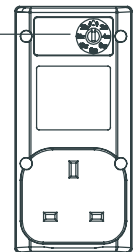
 - Socket switch On/Off 4 times

Timer Settings

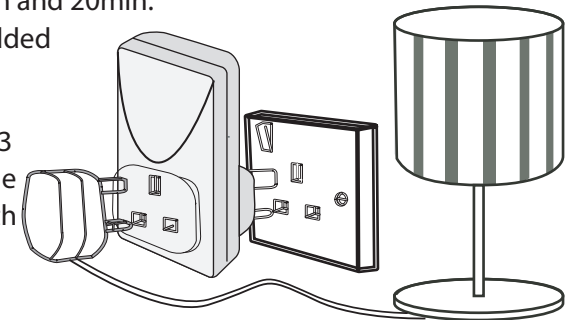
2M - 2minutes
4M - 4 minutes
6M - 6 minutes
8M - 8 minutes
10M - 10 minutes
15M - 15 minutes
20M - 20 minutes



Timer Select



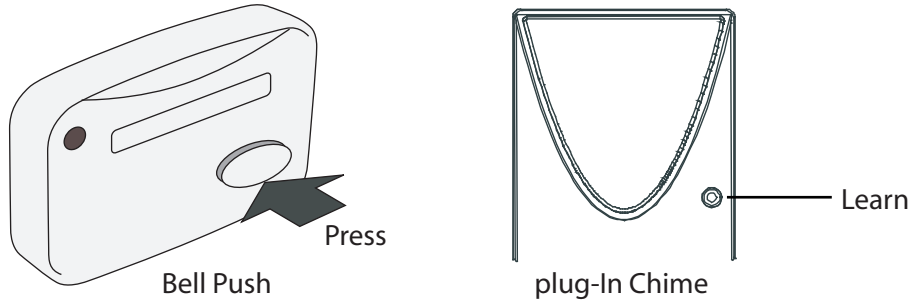
3. When the bell push is pressed, the plug-in door chime receiver will sound and switch the socket "On" for between 2min and 20min. Ideal for switching on table light for added security (*Incandescent lighting only*).



The chime will always make a "Ding Dong" sound when the bell push is pressed.

Pairing/Deleting Bell Push & Chime:

To pair the bell push with the plug-in chime receiver, insert the plug-in chime unit into a plug socket and switch on the power, now press the "Learn" button. The LED will start to flash, now press the button on the bell push, the LED will stop flashing. The units are now paired together place your selected electrical product into the receiver socket; you can now test the units by pressing the bell push.



Deleting Bell Push:

To delete a bell Push that has been paired with a plug-in chime receiver, simply press the "Learn" button. The LED will start to blink; press the bell push button, the LED will blink twice to confirm that the bell push has been removed from the receiver sockets memory.

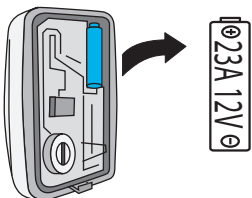
Reset Plug-In Chime:

To reset the plug-in chime unit, press and hold the learn button for more than 6 seconds, the LED will start to flash quickly. Release the button and then press the "Learn" button again for a further 6 seconds, the LED will blink twice to confirm the plug-in chime has been reset.

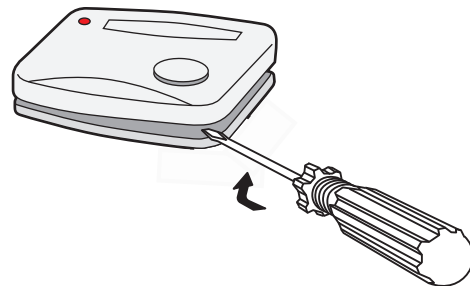
Changing Batteries:

1. Unclip the front cover from the front of the Bell Push using a small screw driver.

2. Remove the battery and replace using a new '23A' battery, making sure the polarity is correct.



3. Replace the front cover making sure the clips are correctly aligned and firmly push the case together.



Always dispose of old batteries in an environmentally responsible way

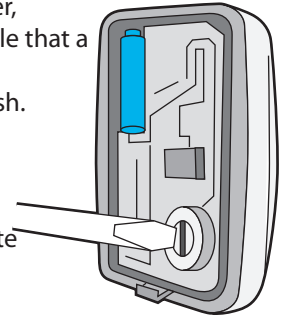
Bell Push Code Setting:

The bell push comes from the factory on a pre-set digital code. However, should your chime activate intermittently for no reason at all, it's possible that a similar unit is operating nearby on the same digital code. To resolve the problem you need to change the digital code in the back of the bell push.

1. Delete the bell push from the memory from the plug-in chime units memory (See Deleting Bell Push).

2. Remove the back of the bell push and using a small screw driver, rotate the digital code select dial to a new setting, this can be any new position.

3. You now need to pair the bell push back with the plug-in door chime. See Pairing/Deleting Bell Push & Chime.



Help Section :

No Activation: Check the battery level and polarity, replace with new batteries if necessary

Check to make sure that the bell push is paired the plug-in door chime unit.

Is the Plug-in door chime within the operating range, see RF range help.

RF Range: The radio signals operating distance is reduced when the signal has to pass through walls. The radio signals achieve a range of 40m; this can be reduced depending on the type of material.

Product Specification:

Wire Free Bell Push: HE-306T
 Battery: 23A (included)
 Range: 40Metres (Open Distance)
 Frequency: 433.92MHz

Plug-in Door Chime Receiver: HE-306R
 Input: 230-240V ~AC
 Load: 300W (Incandescent)
 Frequency: 433.92MHz
 Indoor Use Only

Warning: Never Exceed the Product Specification

Contact:

C H Byron
 34, Sherwood Rd
 Aston Fields
 Bromsgrove
 B60 3DR

Helpline: 0845 2301 231

Tel: 0845 2301231
 Fax: 01527 57701
 Web: www.chbyron.com
 E-mail: support@chbyron.com

Byron		433MHz	
R&TTE APPROVED			
CE 0560			
A	IRL	UK	M
B	L	BG	N
DK	LI	CZ	SK
FIN	NL	EST	SLO
F	P	H	CH
D	E	IS	PL
GR	S	LV	RO
LT			
CH Byron Electrical United Kingdom. www.chbyron.com			