

□ DC515 XX P2/BS

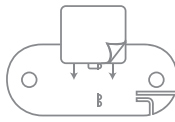
DE Contents **DE** Inhalt **FR** Contenu **NL** Inhoud **FI** Sisältö
 UK Contents **UK** Contento **ES** Contenido **PT** Conteúdo
 GR Περιεχόμενα **SE** Innehåll



x1



x1



x1

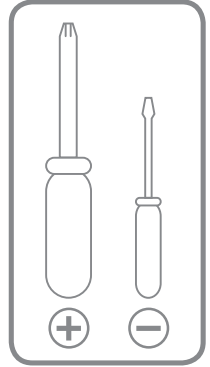


x2

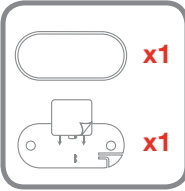
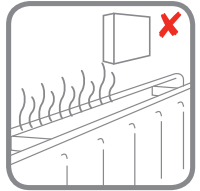
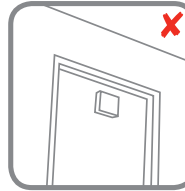
CR2032



x1

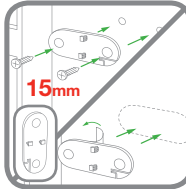
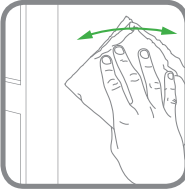
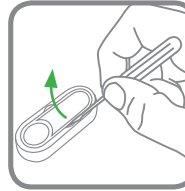
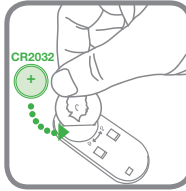


DE Getting started **DE** Erste Schritte **FR** Démarrage **NL** Aan de slag
 FI Aloituspäivät **UK** Kom i gang **IT** Operazioni preliminari **ES** Para empezar
 PT Para começar **GR** Πρώτα βήματα **SE** Kom i gång

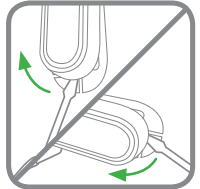
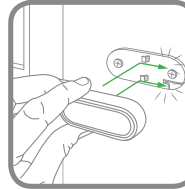


x1

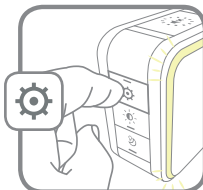
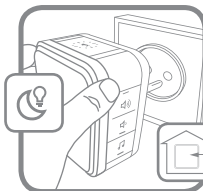
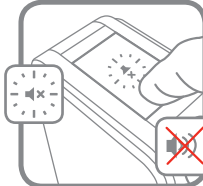
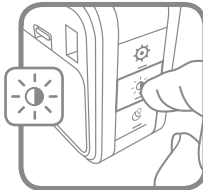
x1



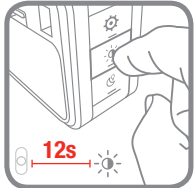
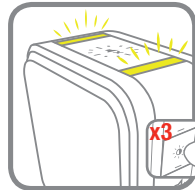
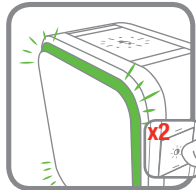
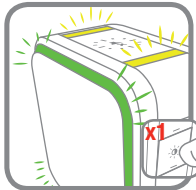
15mm

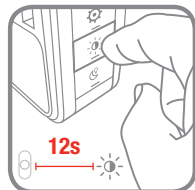


08 Optional features 09 Optionale Funktionen 10 Options disponibles 11 Opzioni
 12 Valinnaiset ominaisuudet 13 Valgfrie funksjoner 14 Funzionalità opzionali
 15 Opciones disponibles 16 Funções opcionais 17 Προαιρετικές λειτουργίες πρόσθετων
 18 Möjliga funktioner



	Hello	Ding Dong	Westminster	Marimba	Piano	Bell	Telephone	Soft Alert
	•	•					•	•
	•	•	•	•			•	•
	•	•	•	•	•	•	•	•





08 Linking 09 Einernen
 10 Programmation 11 Verknüpfung
 12 Linkitämisen 13 Forbinde
 14 Collegamento 15 Enlace 16 Pro-
 gramação 17 Ουδέσση 18 Länkning



08 Trouble shooting 09 Fehlerbehebung 10 Dépannage 11 Probleemoplossing
 12 Vianmääritys 13 Problemlösning 14 Risoluzione dei problemi 15 Solución de
 problemas 16 Resolução de problemas 17 Αντιμετώπιση προβλημάτων 18 Felsökning

livewell.honeywell.com

