

Clear summer Villás



Notes before assembling

Bring your own tools

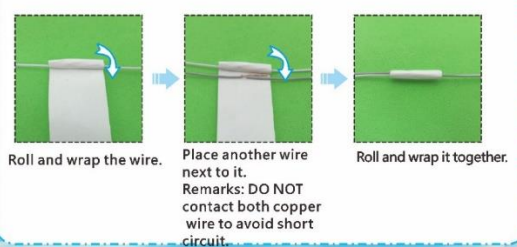
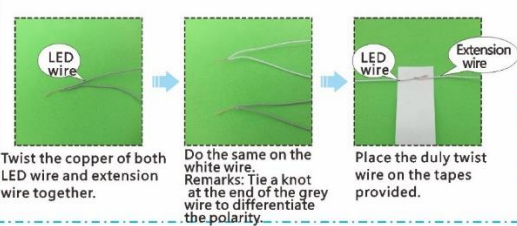
- Scissors: Can be used to cut printed paper, cloth, etc.
- Screw Driver: For fixing screws, mostly can be used to install doors and music components.
- Tweezers: For holding small materials and rolling up iron wire.
- Cutter knife: For peeling off power wire skin and cutting off materials.
- Ruler: For measuring materials to identify the number of materials so as to enhance work efficiency.

Warnings

- The product is not suitable for children under 14 years old. The should be under custody of adults when playing with the product.
- There are small parts, please do not swallow them for avoiding dangerous accidents.
- Please also play attention to the sharp-pointed materials to avoid injuries.

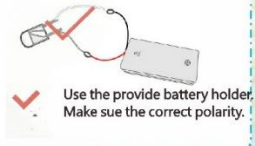
Making tips

1. LED wiring indication: White=Positive; Grey=Negative.
2. Use a craft blade to carefully skim over the plastic to bare the copper wire.
3. For LED wiring extension, please refer to the below steps:

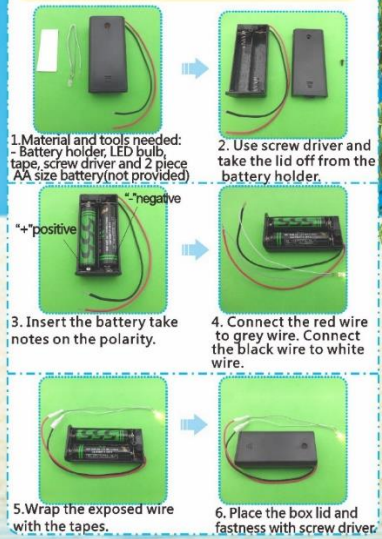


Tips for assembling

1. Pictures shown on the package may be slightly different from the actual product.
2. Please use the provided tracing paper for cutting purpose to achieve the best outcome.
3. Product designs and specification may be subject to change without advance notice for purpose of making improvement.
4. Testing on LED function:



How to assemble the battery holder



Product Introduction



2

Unit:cm

							A07 Printing paper (3pieces of A3) &The template (1piece of A4)	
	A01 Wooden board(original) 0.5*21*32 (1pieces)	A02 Wooden board(original) 0.3*13.5*21.9 (1piece)	A03 Wooden board(original) 0.5*7.8*18.5 (1piece)	A04 Wooden board(original) 0.3*7.8*10.5 (1piece)	A05 Wooden board(white) 0.5*9.5*11 (1piece)	A06 Wooden board (original) 0.3*7.5*7.5 (1piece)		
	B01 Wooden log(white) 0.2*2.5*7.8 (1piece)	B02 Wooden bead (white) 0.2*1.5*3.1 (3pieces)	B03 Wooden bead (blue) 0.2*1.5*3.1 (3pieces)	B04 Wooden log(white) 0.2*1.5*7.8 (1piece)	B05 Wooden log(white) 0.2*0.7*7.8 (1piece)	B06 Wooden log(blue) 0.2*1.5*6.5 (1piece)	B07 Wooden log(blue) 0.2*0.7*6.5 (1piece)	
B08 Wooden log (white) 0.2*1.5*5.2 (1piece)	B09 Wooden log (white) 0.2*0.7*5.2 (1piece)	B10 Wooden log (blue) 0.2*1.5*3.9 (1piece)	B11 Wooden log (blue) 0.2*0.7*3.9 (1piece)	B12 Wooden log(white) 0.2*1.5*2.6 (1piece)	B13 Wooden log(white) 0.2*0.7*2.6 (1piece)	B14 Wooden log(blue) 0.2*1.3*1.5 (1piece)	B15 Wooden log(blue) 0.2*0.7*1.3 (1piece)	B16 Wooden log-round shape (white) φ=0.4*1.5 (9 pieces)
B17 Wooden bead (green) 0.3*0.3*1.5 (3 pieces)	B18 Wooden bead(blue) 0.2*3.1*6.2 (1piece)	B19 Wooden log-round shape (original) φ=0.7*7 (1piece)		B20 Wooden bead -round shape(white) 0.2*1*1 (2pieces)	B21 Wooden bead -round shape(white) 0.2*1.3*1.3 (2pieces)	B22 Wooden log(blue) 0.5*0.5*2.5 (3pieces)	B23 Wooden log(blue) 0.2*0.4*3.1 (1piece)	
B24 Wooden bead(white) 0.2*1.8*3.1 (1piece)	B25 Wooden log(blue) 0.2*0.4*7.7 (1piece)	B26 Wooden bead (white) 0.2*1.8*7.7 (1piece)		B27 Wooden bead (blue) 0.2*1.9*4 (1piece)	B28 Wooden log(blue) 0.2*0.4*4.5 (2pieces)			
B29 Wooden bead(white) 0.2*1.5*5.6 (1piece)		B30 Wooden bead(white) 0.2*1.5*6.8 (1piece)		B31 Wooden bead (white) 0.2*1.8*12 (1piece)				

3

Stair

1. Material needed as shown.

2. Attach B04&B05 to B03 as shown.

3. Attach B03, B04 and B05 together as shown.

4. Fix B05&B07 to combination as shown.

5. Following above step to do the stair.

6. Cut off 2piece of C01(1.5cm) and attach the two side of B16 as shown.

7. Cut off 10 pieces of C02(2cm) and attach them to the B16 as shown.

8. Attach combination to combination as shown. Use the knife and cut a gap on B05 as shown.

9. Cut off A07-1 and fold it as shown.

10. Cut off one piece of C25(1.5), attach it to B62 as shown.

11. Attach B56 on C25 and fix the power wire as shown. Use the knife and cut a gap on A07-1-2, the power wire through the gap as shown. Then paste B63 and A07-1-1 on it.

12. Cut off a piece of C22 according to the template of C22, attach it on C24 and cut off it, paste it and C24 on C22 as shown.

Sofa

1. Attach C61 on B35 as shown. 2. Attach B34 to B35 as shown. 3. Attach B36 to B34 and B35 as shown. 4. Attach another B34 to the combination as shown.

5. Cut off C08 according to the template of C08(1)&(2). Attach them on B39&B38 as shown.

6. Cut off C09 according to the template of C09(1), cover up the combination with it as shown.

7. Cut off C09 according to the template of C09(2), and then fold in half.

8. Attach C09 around the combination as shown.

9. According to above same steps to make two cushions as shown.

10. Attach cushions on the sofa form.

11. Attach B34&B37 to make one seat sofa form.

12. According to the big sofa step to do the one seat sofa. the wooden log is B40, the template of C08(3).

13. Attach cushion on sofa form.

14. Use the awl to make a hole on B41 as shown.

15. attach B42 to B43 as shown.

16. Attach B41 to the combination as shown. Cut off the C12 according to the template of C12 and paste it on the table as shown.

Piano



1. Attach B46 to B50 as shown.

2. Attach B51 to B52 and then paste it to the combination as shown.

3. Attach A07-3 to B53 to make the keyboard. Paste B55 to the keyboard as shown.

4. Attach the keyboard to the combination as shown. Attach B53 to B54 as shown and then paste it to combination.

5. Attach B56 on B57 as shown.

6. Attach the combination to combination as shown. Attach three B58 to the combination as shown.

7. Attach B102 and B44 to the combination as shown.

8. Fold A07-4 in a "Z" form according to the lines.

9. Attach the musical notes to the piano as shown.

10. Attach B59, B60 and B61 as shown.

11. Cut off C08 & C54 according to the template of piano stool, attach them together as shown.

12. Cut off C10 according to the template of piano stool, cover up the combination with it as shown. Attach it to B59 as shown.

Bed



1. Cut off C08 & C54 according to the template of the bed back rest, attach them together as shown.

2. Cut off C10 according to the template of the bed back rest, cover up the combination with it as shown.

3. Attach B63 & B65 well as shown.

4. Attach B66, B67 and B68 to the bed back rest to make the bed form as shown.

5. Cut of C26 & C27 according to the template of quilt, paste them to the bed form as shown.

6. Attach B70, B71, B72 together as shown.

7. Following above step to do the bedside table.

8. Cut off C28 according to the template of pillow C28, apply the glue according to the red lines as shown.

9. Fold the cloth in half, insert some cotton to B28 as shown.

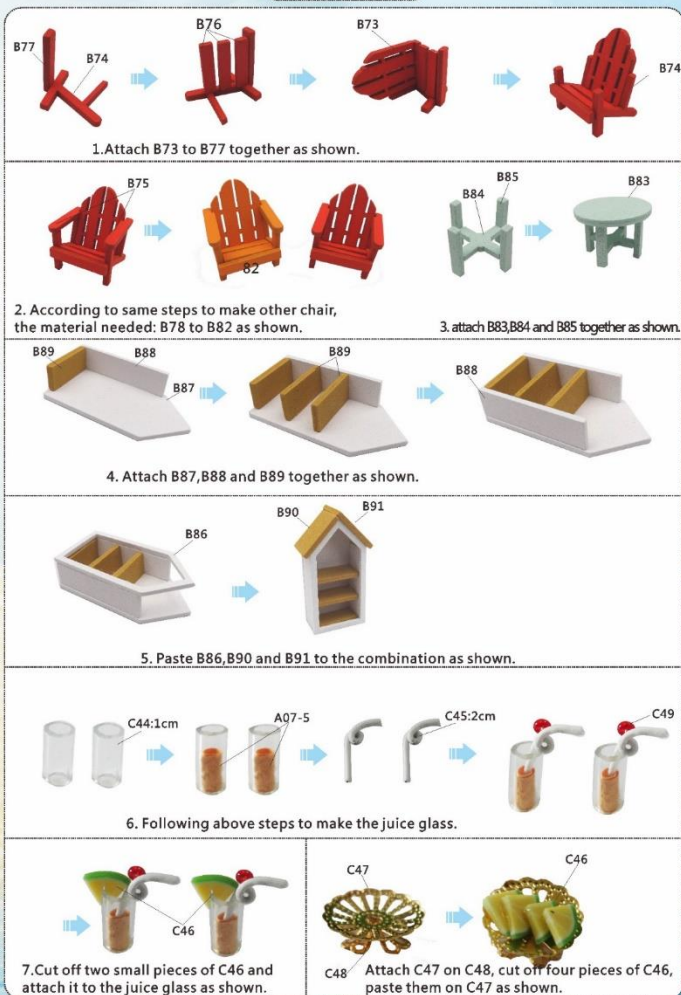
10. Remove the excess cotton.

11. Apply the glue on the top and fix it as shown, the pillow is done.

Repeat above same steps to form other pillows, two pieces of C28, four pieces of C10, two pieces of C09.

8

Table&Chairs



1. Attach B73 to B77 together as shown.

2. According to same steps to make other chair, the material needed: B78 to B82 as shown.

3. Attach B83, B84 and B85 together as shown.

4. Attach B87, B88 and B89 together as shown.

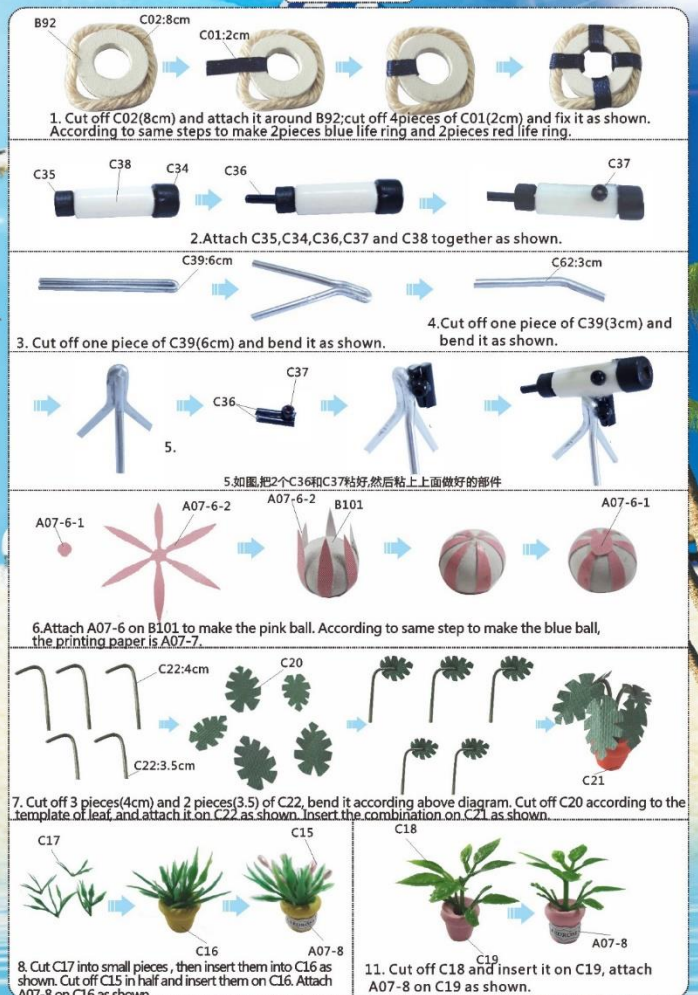
5. Paste B86, B90 and B91 to the combination as shown.

6. Following above steps to make the juice glass.

7. Cut off two small pieces of C46 and attach it to the juice glass as shown.

Attach C47 on C48, cut off four pieces of C46, paste them on C47 as shown.

Life ring



1. Cut off C02(8cm) and attach it around B92; cut off 4 pieces of C01(2cm) and fix it as shown. According to same steps to make 2 pieces blue life ring and 2 pieces red life ring.

2. Attach C35, C34, C36, C37 and C38 together as shown.

3. Cut off one piece of C39(6cm) and bend it as shown.

4. Cut off one piece of C39(3cm) and bend it as shown.

5. 如图,把2个C36和C37粘好,然后粘上上面做好的部件

6. Attach A07-6 on B101 to make the pink ball. According to same step to make the blue ball, the printing paper is A07-7.

7. Cut off 3 pieces(4cm) and 2 pieces(3.5) of C22, bend it according above diagram. Cut off C20 according to the template of leaf, and attach it on C22 as shown. Insert the combination on C21 as shown.

8. Cut C17 into small pieces, then insert them into C16 as shown. Cut off C15 in half and insert them on C16. Attach A07-8 on C16 as shown.

11. Cut off C18 and insert it on C19, attach A07-8 on C19 as shown.

9

Outer frame

1. Attach A07-9 on A01 as shown. Cut off A07-10 and attach it on the back of A01. cut off C05 according to the template of swimming pool and attach it on A07-10 as shown.

2. Attach A07-11 on A02, attach A07-13 on the back of A02 as shown.

3. Attach A07-14 on A03, attach A07-15 on the back of A03 as shown.

4. Attach A07-16 on A04, use a knife to cut a small opening in the position as shown. Attach A04 to B01 as shown.

5. Attach A07-17 on A05 as shown. (PS: glued to the side without sprayed)

6. Attach A07-18-1 on A06 and attach A07-18-2 around A06 as shown. Cut off the excess of A07-18-2 as shown.

7. Used C04 to wrap up B19 as shown. Pasted B20 and B21 to the combination as shown.

8. Attach A01, A02 and A03 together as shown. (specific location reference the dotted lines on A01)

Music machine core material		
D04 Music machine core 1piece	D05 Music machine core handle 1piece	D06 Screw 3pieces

Music machine core manual guide
(If you have purchased the music machine core, please fix it firstly)

Paste D04 on A02 where there is a hole for it as shown in the diagram. Fix D05&D06 on the back of the wall as shown.

9. Attach combination to combination as shown.

10. Cut off 2 pieces of C03(8cm), bend it according to the template of railing as shown.

10

Outer frame

1. Attach 2 pieces of B17 along the small check on A05 as shown, put on the C03 on it, paste B17 as shown.

2. Cut off 4 pieces of C02(3cm) and attach to B16 as shown. Then attach the railing along the small circle on A05 as shown.

3. 把救生圈粘在绳子上

4. According to above diagram, attach the railing & door well as shown.

5. Attach B29 to B32 as shown. Cut off C06 according to the template of swimming pool edge and attach it on A01 as shown.

6. Attach B99&B100 to make the flower shed roof as shown.

7. Attach the flower shed roof to the combination as shown.

8. attach A07-19 on C54 and cut off it, then attach it as shown.

9. Attach one piece of C56 on small opening of the wall as shown.

10. Cut off C25(1.5cm) and fix one piece of C56 in it as shown. Attach C60 to C25 to make small lamp as shown.

11. attach C31, C32 & C56 together as shown.

12. Attach B95 to B96 as shown, fix one piece of C56 on it as shown.

13. Paste B95& B97, B98 to the combination as shown.

14. Cut off one piece of C03(1cm) and bend it as shown. then fix C03 on C14 as shown.

15. Attach one piece of C56 to C52 as shown.

16. Install all of the lamps and fix power wires along the dotted lines as shown. (PS: the coffee table lamp power wires need to pass through the small opening of the B01 as shown.)

Lamp wiring installation drawing

Small lamp
Coconut tree lamp
Lighthouse Lamp
Coffee table lamp

Cut of C13 according to the template of coffee table carpet.

11

Outer frame

1. Cut off all power wires to right size.

2. Peel off the skin at the end of each power wire. Twisted the same color of power wires together as shown.

3. connect the red wire to grey wire, connect the black wire to white wire.

4. Wrap the exposed wire with the tapes C57.

5. Fix the power wire of two floor wall lamp along the dotted lines as shown.

6. Attach some C52 to C19 as shown. Paste some C52 on the flower shed roof as shown.

7. Attach some C53 on C52 as shown.

8. Attach some C53 on the grass. Cut out small pieces of C17&C18 and paste them on grass as shown.

9. Attach C33 on the wall. Cut out a piece of C02(10cm) and paste it on C33, attach the life ring on it as shown.

10. Attach C33 on the wall, cut out C23 according to the template of wall deco of two floor. Attach A07-2 on cardboard and cut out it. Paste all of them to the C23 as shown.

11. Attach B94 on the wall, paste C24 and C42 to the cabinet. Paste the book of A07-20 to the cabinet. Attach A07-21 to cardboard and cut out, paste it on cabinet as shown.

12. Attach A07-22 on B33, paste C07 on B33 as shown.

13. Attach B33 as shown.

14. Cut off 2 pieces of C39(4cm) and bend it according to the template of swimming pool railing as shown. Paste them well as shown. C54

15. Attach the combinations well as shown.

16. Attach combination parts well as shown.

17. cut out a piece of C03(8cm), warp B93 with C03 and paste it on the side of lighthouse as shown.

18. Attach A07-3 on C54 and cut out it, paste another part of A07-23 on it as shown.

19. Attach A07-24 on C54 and cut out it to make the frame as shown.

20. Fold A07-20 in a "Z" form according to the line to make the book. (PS: others book making method are same)

21. Cut out C29 according to the template and attach it as shown.

12

Installation of dust proof cover (For updated version, the parts need to be purchased separately)

D01 Transparent cover
0.15*21*32 (1piece)

D02 Transparent cover
0.15*14.5*32 (2pieces)

D03 Transparent cover
0.15*14.5*20.7 (2pieces)

1. Tear off kraft paper of each piece of transparent cover.

Paste D01, D02 and D03 together to complete the dust proof cover as shown.

Photo of Dust proof cover(daytime)

Photo of Dust proof cover(night)

13

Photo Gallery

