

DIY mini house kits – Charming house

S902



S902 Instruction manual

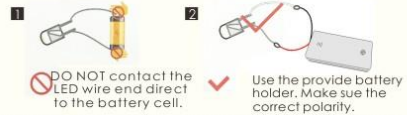
NOTICE OF ASSEMBLE

Tips for assembling

1. Pictures shown on the package may be slightly different from the actual product.
2. All the materials are taken in the operation step, put the remaining materials back into the original pocket until the installation is completed. (Avoid material loss during installation)
3. The dimensions indicated in the step diagram are "cm".
4. If there have template paper material, please cut the material according to the template to avoid mistakes.
5. According to the part rule example at the bottom of this page, refer to the part on the part number drawing, find the material object and compare with the material list, confirm and install. (Wooden parts only)
6. Glue should not be applied too much, so as not to dry longer, overflow will affect the effect of the finished product.
7. Part shapes may differ from the photographs depending on the production batch.

Testing on LED function

Be sure to test the LED lights before making the lighting, note that the LED white wire to the negative, gray wire to the positive reference to the following figure operation test.



DO NOT contact the LED wire end direct to the battery cell.

Use the provide battery holder. Make sue the correct polarity.

Product comes with tool:



1 White glue:
It dries slowly and can paste materials firmly without trace. Can be used to paste wallpaper and printed paper.

2 Ruler:
For measuring materials to identify the number of materials so as to enhance work efficiency.

3 Scissors:
Can be used to cut printed paper, cloth, etc.

4 Cutter knife:
For peeling off power wire skin and cutting off materials.

Bring your own tools:



1 Alcohol gel:
It dries fast and can paste materials firmly but may leave some trace. Can be used to paste small metal materials and small components of furniture.

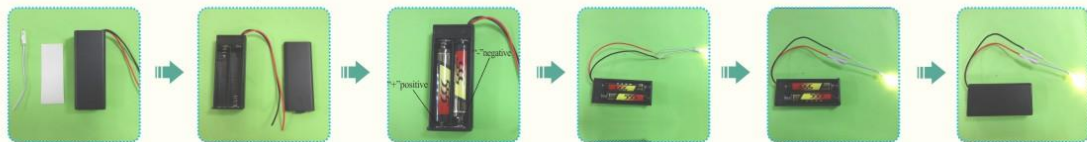
2 Tweezers:
For holding small materials and rolling up iron wire.

3 Screw Driver:
For fixing screws, mostly can be used to install doors and music components.

4 Drill:
Can be used to drill holes in timbers, roll up hard iron wire or fix screws.

5 Needle-nose pliers:
For cutting, bending wire, folding harder material.

How to assemble the battery holder



1 Material and tools needed:
- Battery holder, LED bulb, tape, screw driver and 2 piece AA size battery(not provided)

2 Use screw driver and take the lid off from the battery holder.

3 Insert the battery take notes on the polarity.

4 Connect the red wire to grey wire, Connect the black wire to white wire.

5 Wrap the exposed wire with the tapes.

6 Place the box lid and fastness with screw driver.

Example of parts rule:

A01: The parts are directly in the box.; B01: parts in bag B; C01: part in bag C, and so on.

(Note: display the printing paper A09-01 in the step: the printing paper is placed directly in the box, part number is A09-01)

details of miniature kit

Name	Material package
printing paper	Bag A-A09 (All printing and template papers are shown on A09 paper.)
Television	bag C + bag E + printing paper
Dining table	bag C + bag D + printing paper
Shelving	bag C + printing paper
Wooden shoes	bag C + printing paper
wall light	bag C + bag D + bag E + printing paper
Bed	bag D + printing paper
Fruit tree	bag D
Orange tree	bag D
Big potted plant	bag D + bag E
Medium potted plant	bag D
Small potted plant	bag D
Wall shelving	bag B
lucky cat	printing paper
photo	printing paper
outer frame	bag A + bag B + bag E + printing paper
battery holder	bag E
dust cover	bag A

Welcome to the little DIY world, now come with me!

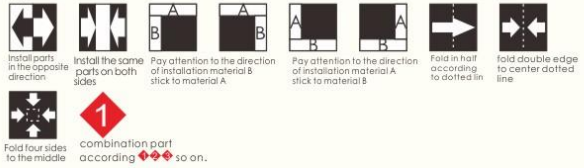
Thumbnail of material list(reference only)



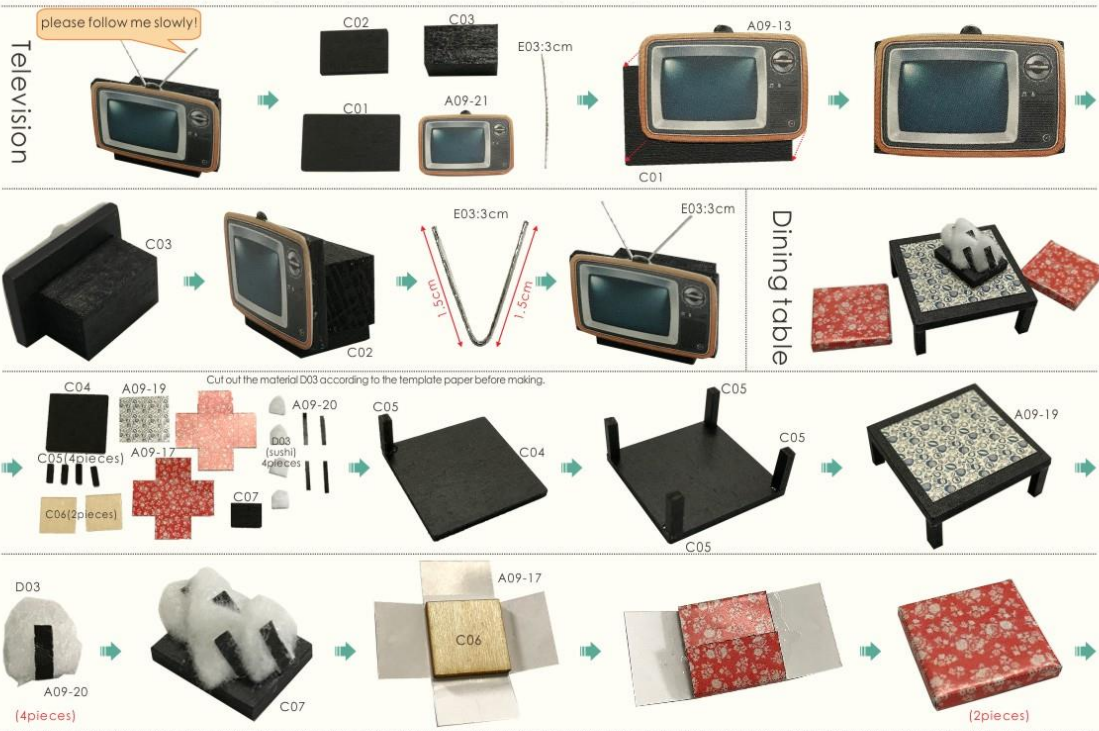
Thumbnail of printing paper & template paper(reference only)



Symbol description used



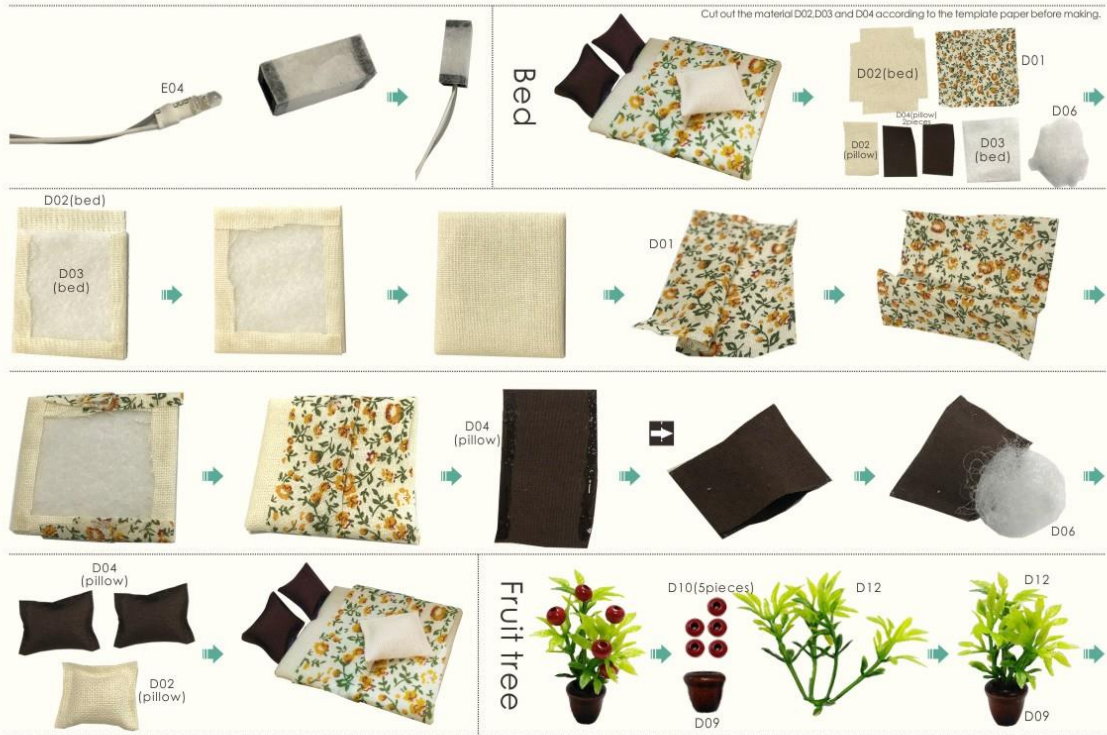
2



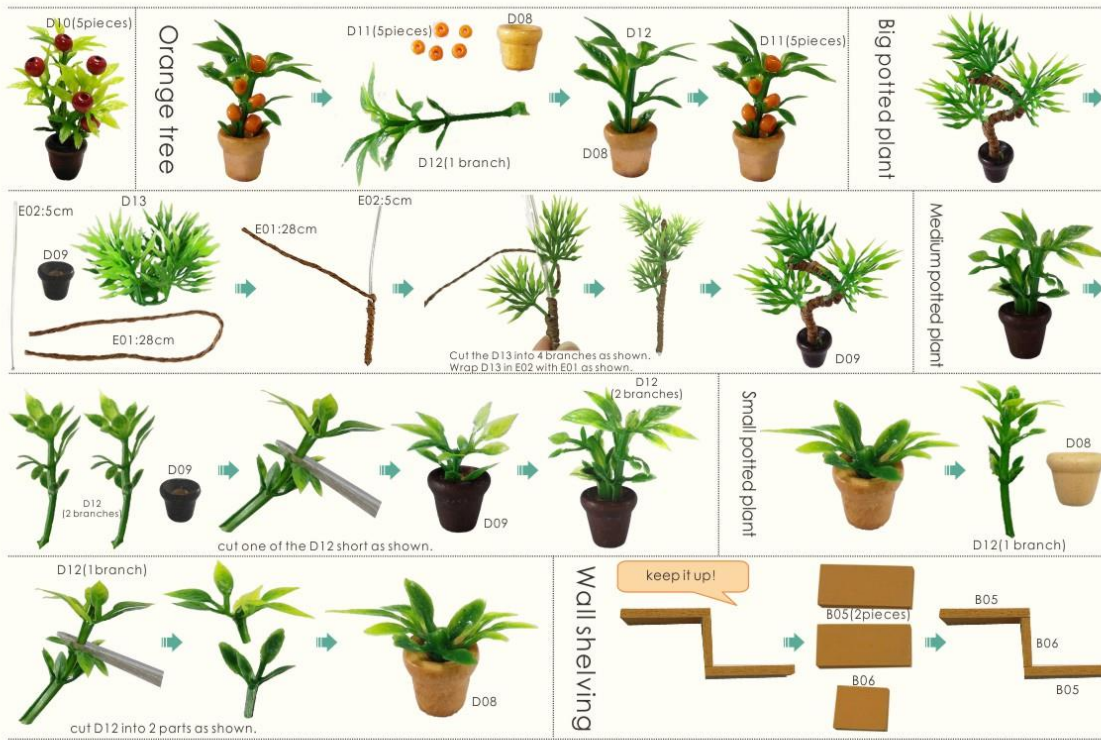
3



4



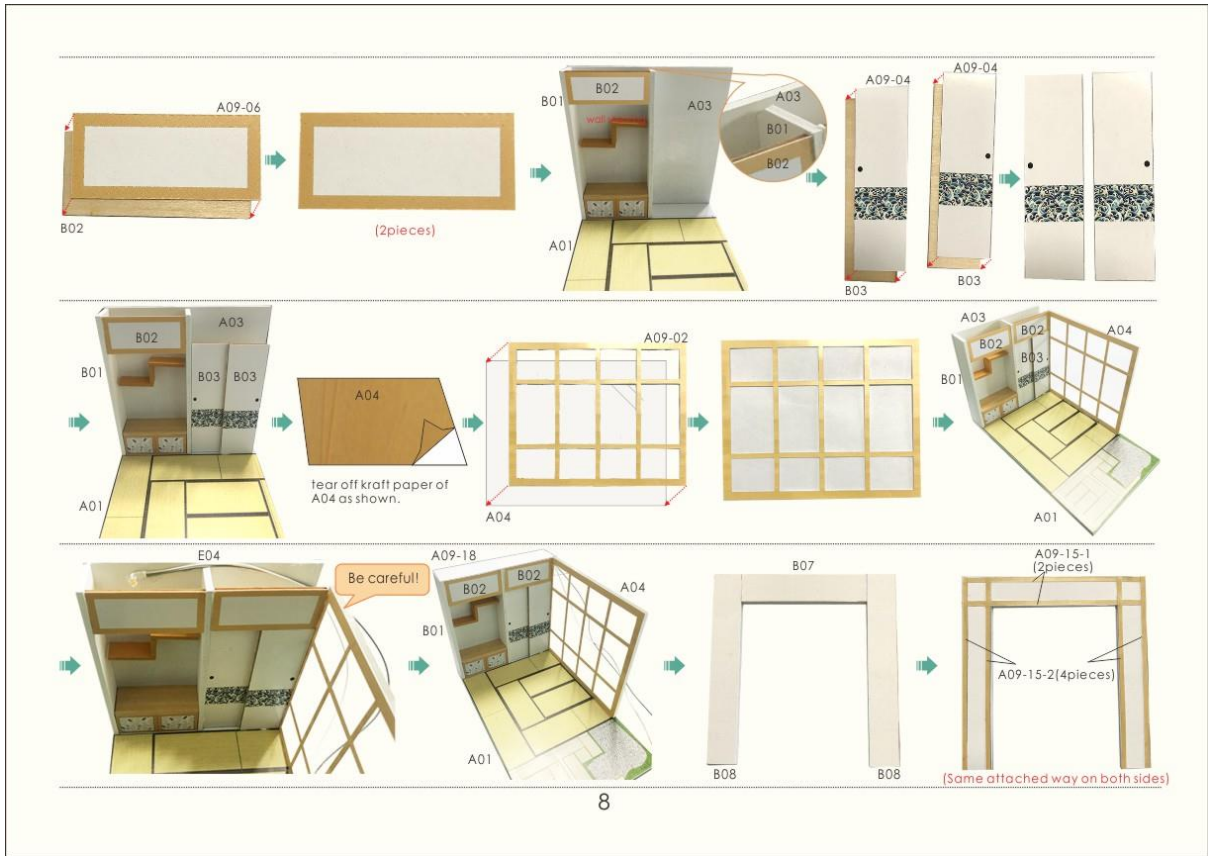
5



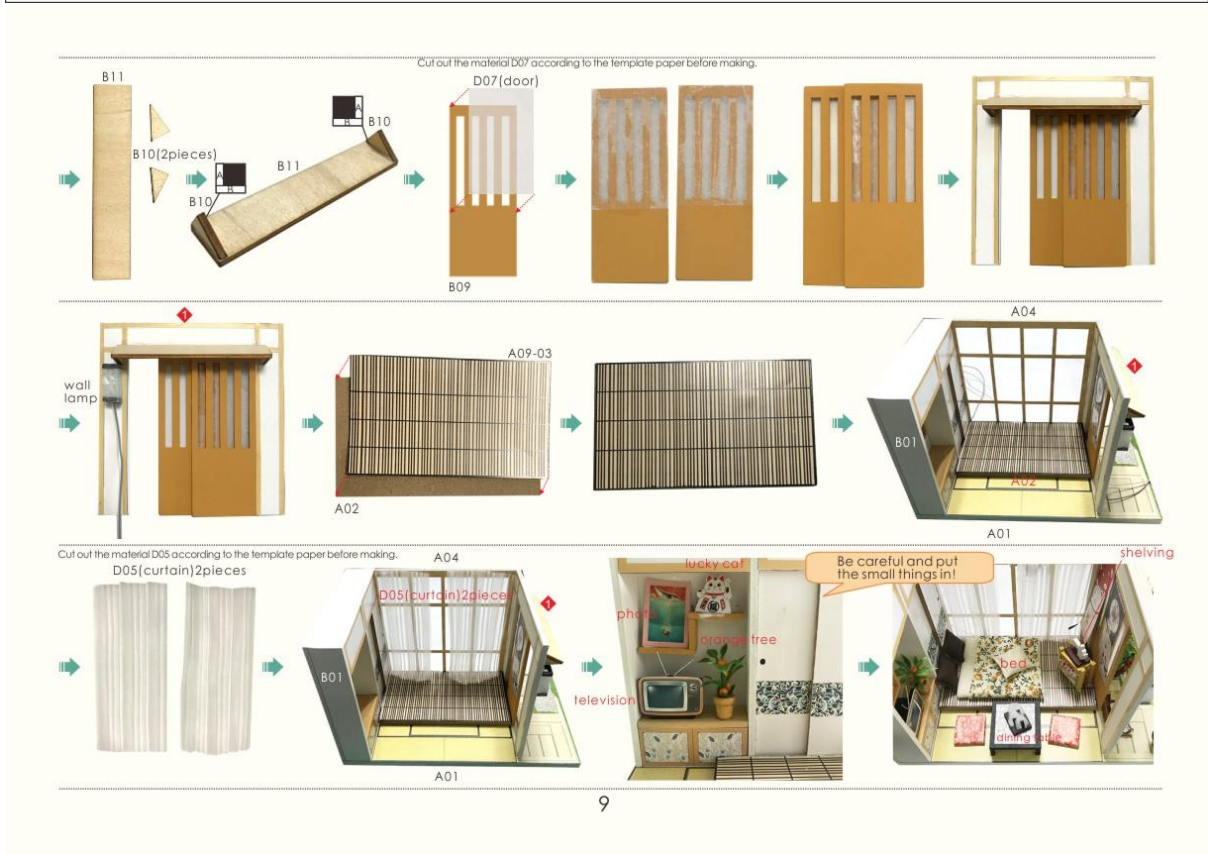
6



7



8



9



How to assemble the battery holder

Statement: the lamp wires cannot be inserted into the output socket.

- Can use 7 batteries
- Please notice the place of anode and cathode when put in the batteries
- Rechargeable batteries are not blunt electricity
- Rechargeable batteries can only be charged under adult supervision
- Rechargeable batteries should be removed from the toy before charging
- Different types of batteries cannot mix;
- Do not mix new batteries in use with semi-used batteries.
- Run out of battery should be removed from the toy
- The power shall not be short circuit



Attach A09-22 well as shown.

Installation of dust proof cover



Photo of Dust proof cover



Attention: Please keep the instruction for future enquires after installation.

S902 Material list unit: cm

(1/2)

<p>Bag A</p>	<p>scale 1: 7 A01 board (white edge) 16.8*9.7*0.5cm (1 piece)</p>	<p>scale 1: 4 A02 board (wood color) 10.1*6*0.5cm (1 piece)</p>	<p>scale 1: 5 A03 board (white) 9.7*9.7*0.3cm (1 piece)</p>	<p>scale 1: 5 A04 transparent cover 10.4*9.7*0.2cm (1 piece)</p>	<p>scale 1: 7 A05 transparent cover 16.8*9.7*0.15cm (1 piece)</p>	<p>scale 1: 6 A06 transparent cover 14.7*9.7*0.15cm (1 piece)</p>	<p>scale 1: 5 A07 transparent cover 9.7*9.2*0.15cm (1 piece)</p>
<p>scale 1: 4 A08 transparent cover 9.7*4.2*0.15cm (1 piece)</p>	<p>Bag B</p>	<p>scale 1: 4 B01 wood (white) 9.7*1.8*0.3cm (2 pieces)</p>	<p>scale 1: 2 B02 wood (wood color) 4.4*2*0.2cm (2 pieces)</p>	<p>scale 1: 3 B03 wood (wood color) 7.7*2.3*0.2cm (2 pieces)</p>	<p>scale 1: 2 B04 wood (wood color) 4.4*1.8*0.2cm (2 pieces)</p>	<p>scale 1: 1 B05 wood (pale yellow) 2.2*1*0.2cm (2 pieces)</p>	<p>scale 1: 1 B06 wood (pale yellow) 1.2*1*0.2cm (1 piece)</p>
<p>scale 1: 3 B07 wood (white) 6.4*1.5*0.3cm (1 piece)</p>	<p>scale 1: 6 B08 wood (white) 9.7*1.5*0.3cm (2 pieces)</p>	<p>scale 1: 3 B09 wood (pale yellow) 8.2*3.2*0.2cm (2 pieces)</p>	<p>scale 1: 1 B10 wood (wood color) 1.5*0.7*0.2cm (2 pieces)</p>	<p>scale 1: 3 B11 wood (wood color) 7.5*1.5*0.2cm (1 piece)</p>	<p>Bag C</p>	<p>scale 1: 1 C01 wood (black) 2.5*1.5*0.2cm (1 piece)</p>	<p>scale 1: 1 C02 wood (black) 1.8*1.2*0.2cm (1 piece)</p>
<p>scale 1: 1 C03 wood (black) 1.8*1*1cm (1 piece)</p>	<p>scale 1: 2 C04 wood (black) 3*3*0.2cm (1 piece)</p>	<p>scale 1: 1 C05 wood (black) 1*0.3*0.2cm (4 pieces)</p>	<p>scale 1: 1 C06 wood (black) 1.8*1.8*0.2cm (2 pieces)</p>	<p>scale 1: 1 C07 wood (black) 1.5*1.2*0.2cm (1 piece)</p>	<p>scale 1: 1 C08 wood (yellow) 1.8*1.2*0.2cm (3 pieces)</p>	<p>scale 1: 1 C09 wood (yellow) 2.5*0.3*0.2cm (4 pieces)</p>	<p>scale 1: 1 C10 wood (brown) 1.5*1*0.2cm (1 piece)</p>
<p>scale 1: 1 C11 wood (white) 1.4*1*0.3cm (1 piece)</p>	<p>scale 1: 1 C12 wood (wood color) 1*0.7*0.2cm (4 pieces)</p>	<p>scale 1: 1 C13 wood (black) 0.8*0.8*0.2cm (2 pieces)</p>	<p>Bag D</p>	<p>D01 cloth (yellow/white) 7*7cm (1 piece)</p>	<p>D02 cloth (米白色) 9*7cm (1 piece)</p>	<p>D03 non-woven (white) 6*6cm (1 piece)</p>	<p>D04 cloth (brown) 5*5cm (1 piece)</p>
<p>D05 cloth (white) 10*8cm (1 piece)</p>	<p>D06 cotton (white) (some)</p>	<p>D07 paper (white) 7*7cm (1 piece)</p>	<p>D08 wooden bead (wood color) (2 pieces)</p>	<p>D09 wooden bead (dark brown) (3 pieces)</p>	<p>D10 wooden bead (red) (5 pieces)</p>	<p>D11 small bead (orange) (5 pieces)</p>	<p>D12 artificial plant (green) (2 pieces)</p>