

S901

DIY mini house kits – Future space



S901 Instruction manual

NOTICE OF ASSEMBLE

Making tips

1. LED wiring indication: White=Positive; Grey=Negative.
2. Use a craft blade to carefully skim over the plastic to bare the copper wire.
3. For LED wiring extension, please refer to the below steps:



Twist the copper of both LED wire and extension wire together.



Do the same on the white wire. Remarks: Tie a knot at the end of the grey wire to differentiate the polarity.



Place the duly twist wire on the tapes provided.



Roll and wrap the wire.



Place another wire next to it. Remarks: DO NOT contact both copper wire to avoid short circuit.



Roll and wrap it together.

Warnings

- The product is not suitable for children under 14 years old. The should be under custody of adults when playing with the product.
- There are small parts, please do not swallow them for avoiding dangerous accidents.

Tips for assembling

1. Pictures shown on the package may be slightly different from the actual product.
2. Please use the provided tracing paper for cutting purpose to achieve the best outcome.
3. Product designs and specification may be subject to change without advance notice for purpose of making improvement.
4. Testing on LED function:



DO NOT contact the LED wire end direct to the battery cell.



Use the provide battery holder. Make sue the correct polarity.

How to assemble the battery holder



1. Material and tools needed:
- Battery holder, LED bulb, tape, screw driver and 2 piece AA size battery(not provided)



2. Use screw driver and take the lid off from the battery holder.



3. Insert the battery take notes on the polarity.



4. Connect the red wire to grey wire. Connect the black wire to white wire.



5. Wrap the exposed wire with the tapes.



6. Place the box lid and fastness with screw driver.

S901 Material list

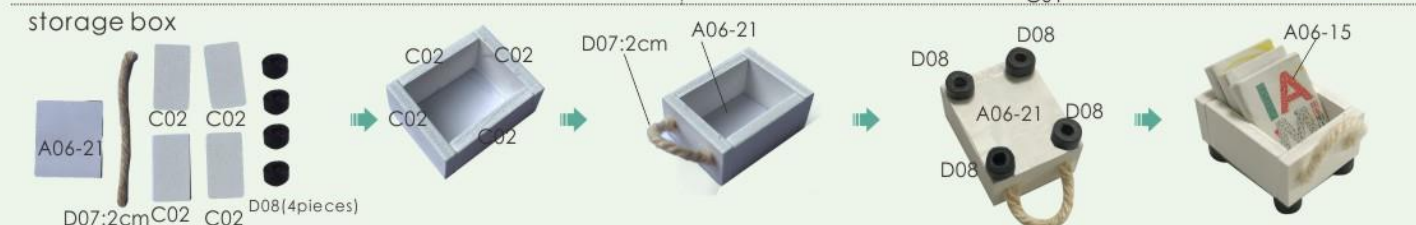
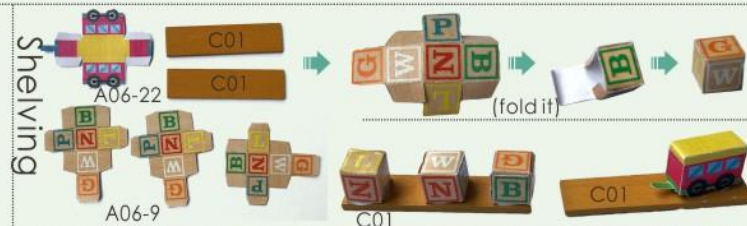
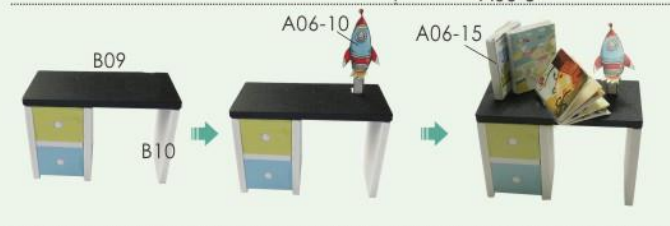
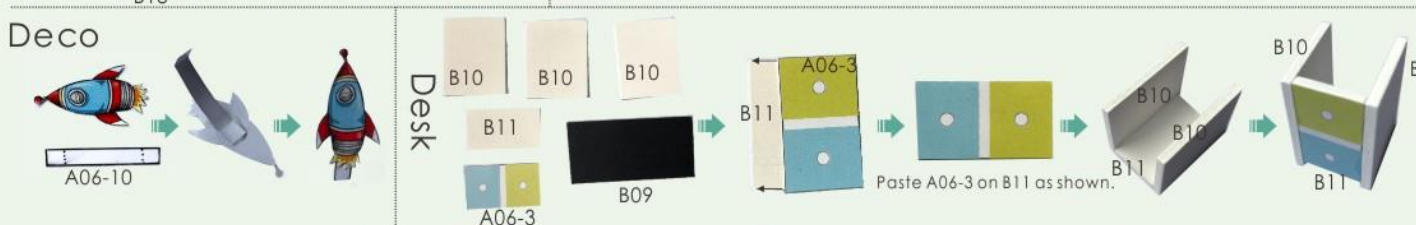
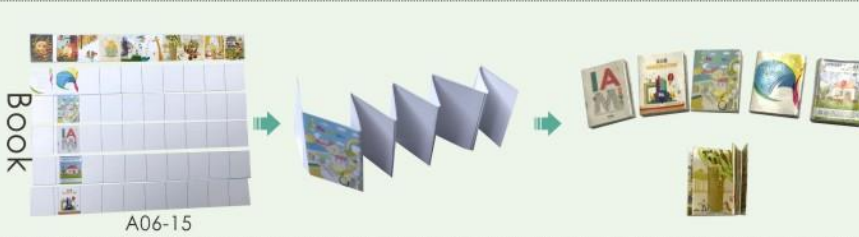
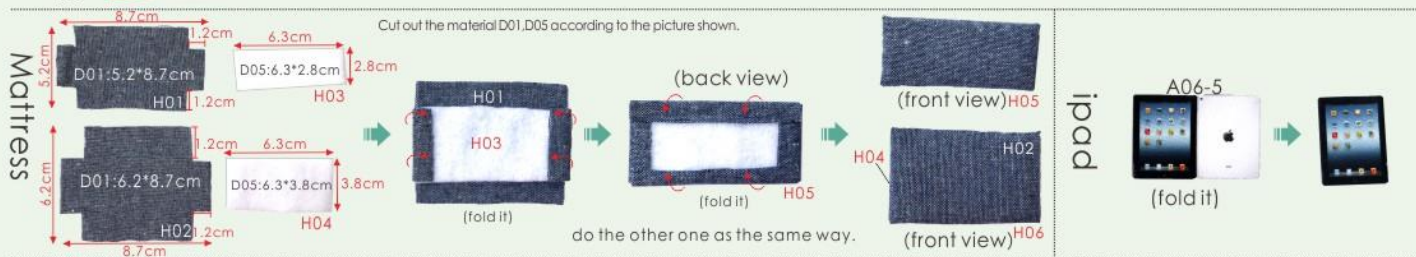
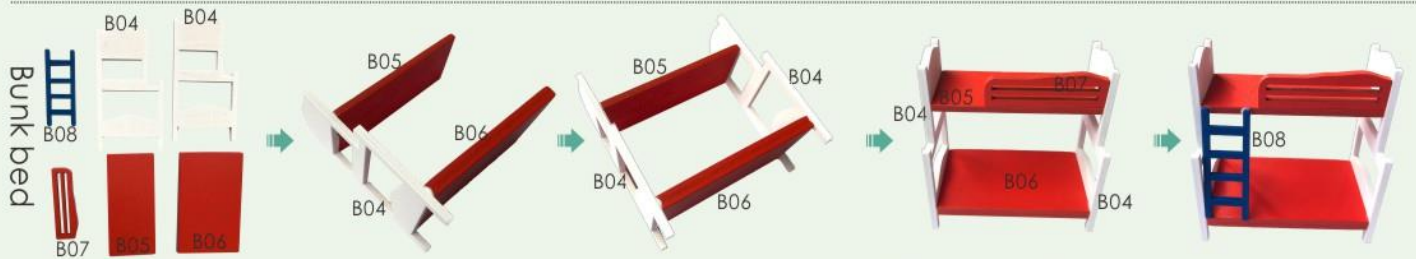
Unit: cm

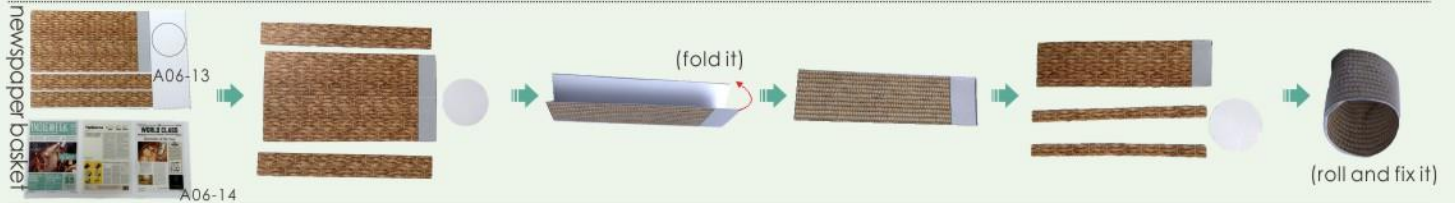
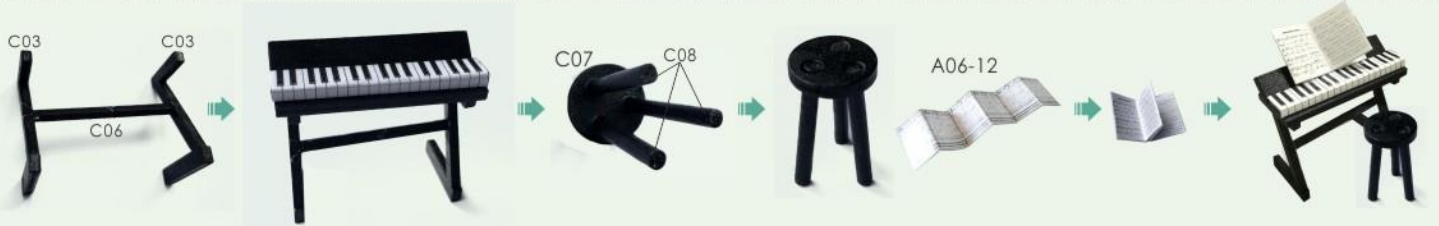
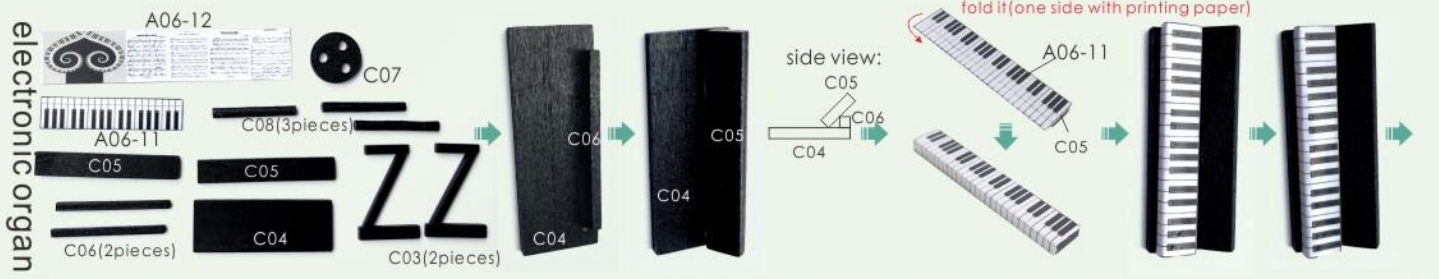
(1/1)

<p>Bag A</p> <p>scale 1: 6 A01 board (white edge) 16.8*9.7*0.5cm(1piece)</p>	<p>scale 1: 6 A02 board (white) 12.3*9.7*0.5cm(1piece)</p>	<p>scale 1: 4 A03 transparent cover 9.7*4.5*0.2cm(2pieces)</p>	<p>scale 1: 6 A04 transparent cover 16.8*9.7*0.15cm(2pieces)</p>	<p>scale 1: 4 A05 transparent cover 9.7*9*0.15cm(2pieces)</p>	<p>Bag B</p> <p>scale 1: 1 B01 wood (light yellow) 2.2*0.6*0.3cm(2pieces)</p>	<p>scale 1: 2 B02 round wood (light yellow) 3.6*0.2*0.2cm(1piece)</p>	<p>scale 1: 1 B03 round wood (light yellow) 2.5*0.4*0.4cm(1piece)</p>	<p>scale 1: 3 B04 wood (white) 7.4*4*0.3cm(2pieces)</p>	<p>scale 1: 3 B05 wood (red) 6.5*3*0.3cm(1piece)</p>	<p>scale 1: 3 B06 wood (red) 6.5*4*0.5cm(1piece)</p>	<p>scale 1: 2 B07 wood (red) 4.5*1.4*0.2cm(1piece)</p>	<p>scale 1: 2 B08 wood (blue) 4.5*1.7*0.2cm(1piece)</p>	<p>scale 1: 2 B09 wood (black) 4.5*2.2*0.2cm(1piece)</p>	
<p>scale 1: 2 B10 wood (white) 2.8*2.2*0.2cm(3pieces)</p>	<p>scale 1: 1 B11 wood (wood color) 2.6*1.5*0.2cm(1piece)</p>	<p>scale 1: 2 B12 wood (dark blue) 4*2*0.2cm(1piece)</p>	<p>scale 1: 2 B13 wood (dark blue) 2.2*2*0.2cm(1piece)</p>	<p>scale 1: 1 B14 wood (dark blue) 1.6*0.3*0.2cm(2pieces)</p>	<p>Bag C</p> <p>scale 1: 2 C01 wood (yellow) 3.8*0.9*0.2cm(2pieces)</p>	<p>scale 1: 1 C02 wood (white) 1.8*1*0.15cm(4pieces)</p>	<p>scale 1: 2 C03 wood (black) 2.7*1.8*0.2cm(2pieces)</p>	<p>scale 1: 2 C04 wood (black) 4*1.5*0.2cm(1piece)</p>	<p>scale 1: 2 C05 wood (black) 4*0.7*0.2cm(2pieces)</p>	<p>scale 1: 1 C06 wood (black) 3.2*0.2*0.2cm(2pieces)</p>	<p>scale 1: 1 C07 wood (black) 1.5*1.5*0.2cm(1piece)</p>	<p>scale 1: 1 C08 round wood (black) 2.5*0.3*0.3cm(3pieces)</p>	<p>scale 1: 2 C09 wood (white) 4.5*1.6*0.2cm(1piece)</p>	<p>scale 1: 3 C10 wood (white) 8.1*0.5*0.2cm(1piece)</p>
<p>D01 cloth (blue) 19*7cm(1piece)</p>	<p>D02 cloth (brown/white) 8*5cm(1piece)</p>	<p>D03 cloth (yellow) 5*4cm(1piece)</p>	<p>D04 cloth (white) 9.7*7cm(1piece)</p>	<p>D05 non-woven (white) 7*7cm(1piece)</p>	<p>D06 cotton (white) (some)</p>	<p>D07 hemp rope (light yellow) 23*cm(1piece)</p>	<p>D08 wooden bead (black) (4pieces)</p>	<p>D09 wooden bead (wood color) (1piece)</p>	<p>D10 iron wire (green) 18cm(1piece)</p>	<p>D11 eyelet (bronze) (2pieces)</p>	<p>D12 LED lamp with wire (2piece)</p>	<p>D13 battery holder (1piece)</p>	<p>D14 adhesive paper (white) (1piece)</p>	<p>D15 sandpaper (1piece)</p>

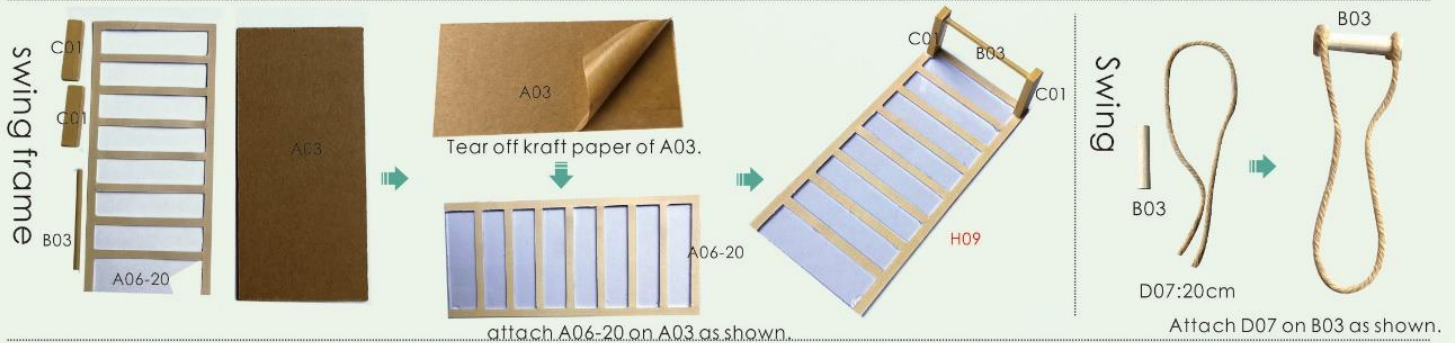
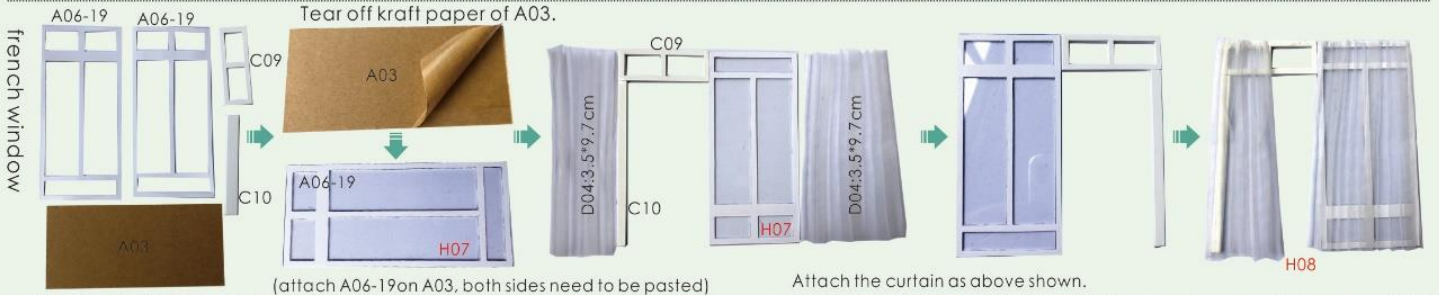
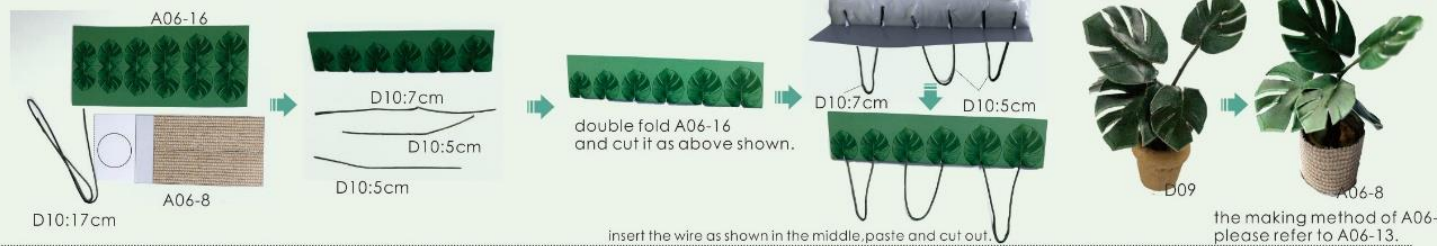
Product information







Potted plant

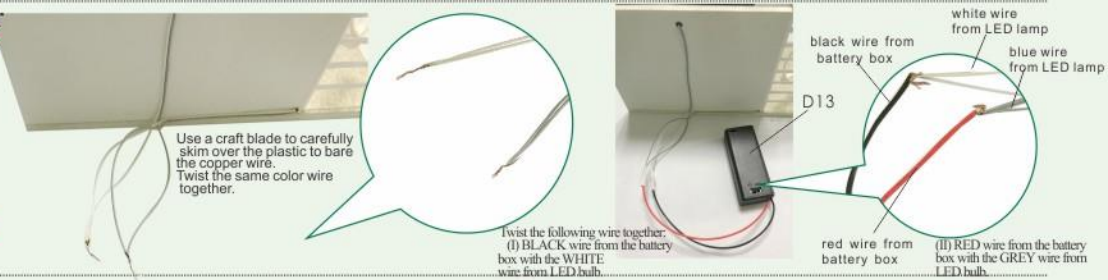




How to assemble the battery holder

Statement: the lamp wires cannot be inserted into the output socket.

- Can use 7 batteries
- Please notice the place of anode and cathode when put in the batteries
- Rechargeable batteries are not blunt electricity
- Rechargeable batteries can only be charged under adult supervision
- Rechargeable batteries should be removed from the toy before charging
- Different types of batteries cannot mix;
- Do not mix new batteries in use with semi-used batteries.
- Run out of battery should be removed from the toy
- The power shall not be short circuit



7

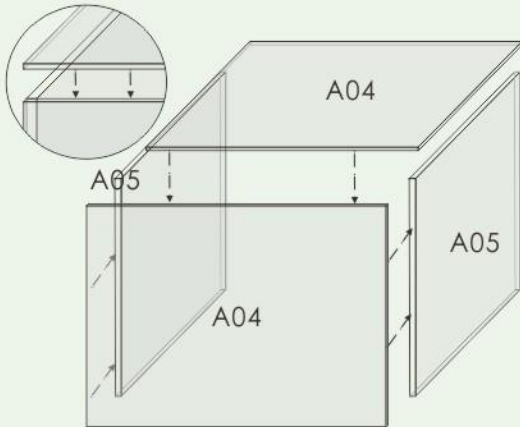


8

Installation of dust proof cover



1. Tear off kraft paper of each piece of transparent cover.



2. Paste A04 and A05 together to complete the dust proof cover as shown.

Photo of Dust proof cover

