

# FIRST LOVE



M915 Instruction manual

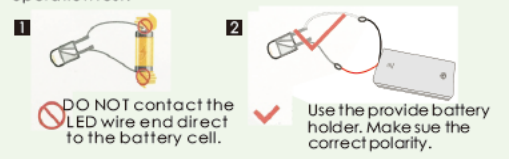
## NOTICE OF ASSEMBLE

### Tips for assembling

1. Pictures shown on the package may be slightly different from the actual product.
2. All the materials are taken in the operation step, put the remaining materials back into the original pocket until the installation is completed. (Avoid material loss during installation)
3. The dimensions indicated in the step diagram are "cm".
4. If there have template paper material, please cut the material according to the template to avoid mistakes.
5. According to the part rule example at the bottom of this page, refer to the part on the part number drawing, find the material object and compare with the material list, confirm and install. (Wooden parts only)
6. Glue should not be applied too much, so as not to dry longer, overflow will affect the effect of the finished product.
7. Part shapes may differ from the photographs depending on the production batch

### Testing on LED function

Be sure to test the LED lights before making the lighting, note that the LED white wire to the negative, gray wire to the positive reference to the following figure operation test.



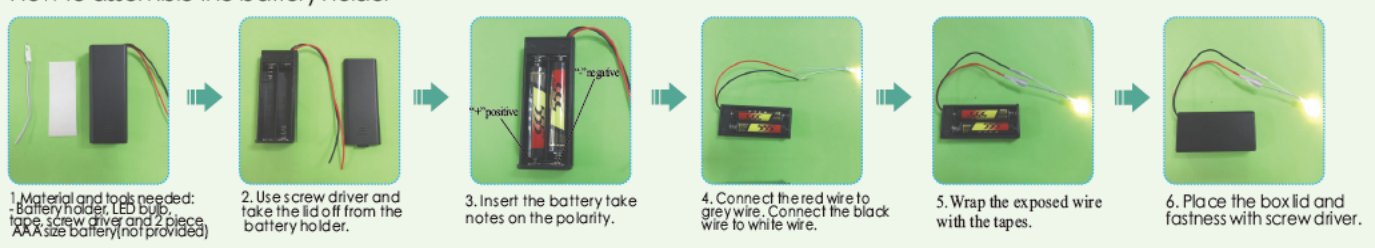
### Product comes with tool:

- |   |  |   |  |  |   |  |
|---|--|---|--|--|---|--|
| <b>1</b><br>  | <b>2</b><br>   | <b>3</b><br>  | <b>4</b><br>   | <b>5</b><br>   | <b>6</b><br>  | <b>7</b><br>   |
| <b>White glue:</b><br>It dries slowly and can paste materials firmly without trace. Can be used to paste wallpaper and printed paper. | <b>Ruler:</b><br>For measuring materials to identify the number of materials so as to enhance work efficiency. | <b>Scissors:</b><br>Can be used to cut printed paper, cloth, etc. | <b>Cutter knife:</b><br>For peeling off power wire skin and cutting off materials. | <b>Alcohol gel:</b><br>It dries fast and can paste materials firmly, but may leave some trace. Can be used to paste small metal materials and small components of furniture. | <b>Tweezers:</b><br>For holding small materials and rolling up iron wire. | <b>Screw Driver:</b><br>For fixing screws, mostly can be used to install doors and music components. |

### Bring your own tools:

- |   |  |
|---|--|
| <b>1</b><br>  | <b>2</b><br>   |
| <b>Drill:</b><br>Can be used to drill holes in timbers, roll up hard iron wire or fix screws. | <b>Needle-nose pliers:</b><br>For cutting, bending wire, folding harder material |

### How to assemble the battery holder



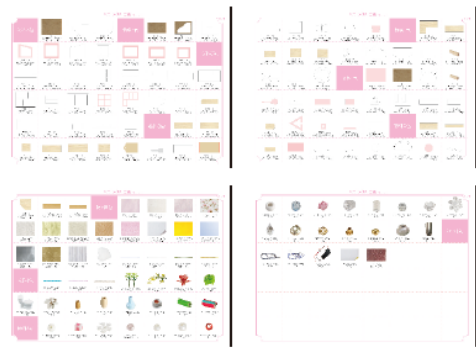
### Example of parts rule:

A01:The parts are directly in the box.;B01:parts in bag B;C01:part in bag C,and so on.  
(Note: display the printing paper A04-01 in the step: the printing paper is placed directly in the box, part number is A04-01)

# details of miniature kit

Name	Material package
printing paper	Bag A-A04(All printing and template papers are shown on A04 paper, total 4pieces of A3 )
refrigerator	D bag + printing paper
cabinet	D bag + H bag + J bag + K bag +printing paper
kit chen wall decoration	D bag + H bag + J bag + K bag +printing paper
dining table and chair	D bag + J bag + K bag + printing paper
sofa	E bag + H bag + K bag +printing paper
living room wall decoration	E bag + H bag + J bag+ printing paper
table	E bag + H bag + J bag + printing paper
swimming pool	E bag + J bag + printing paper
bed	F bag + H bag + printing paper
bedside cabinet	F bag + H bag + J bag + K bag + L bag +printing paper
book shelves	F bag + J bag + K bag + printing paper
chandelier	F bag + G bag + H bag + K bag + L bag+printing paper
bedroom accessories	F bag + H bag+ J bag+ printing paper
dressing table	G bag + H bag + K bag+ printing paper
small round table	G bag + H bag + J bag +printing paper
the bathroom	G bag + H bag + printing paper
potted plant	H bag + J bag + K bag + paper
outer frame	A bag + B bag + C bag + G bag + H bag + J bag + K bag + L bag +printing paper

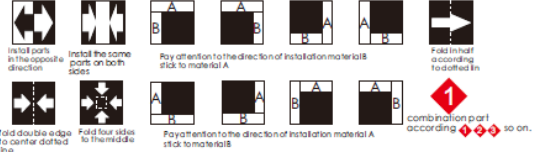
## Thumbnail of material list( reference only)



## Thumbnail of printing paper & template paper( reference only)

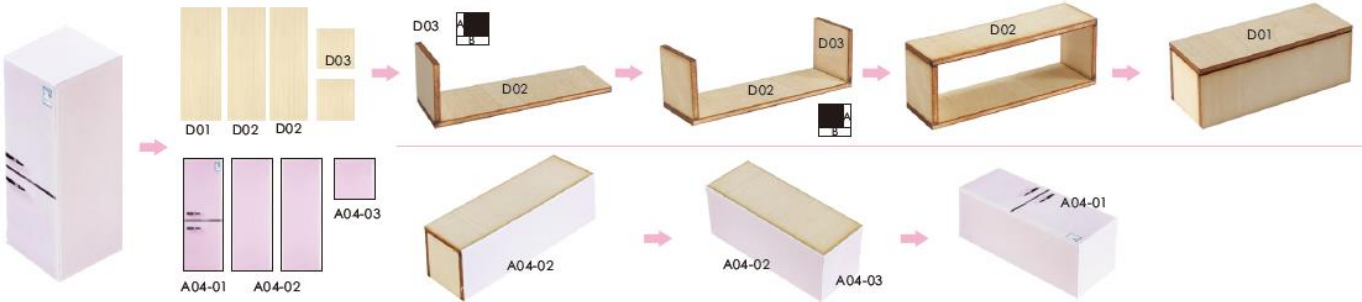


## Symbol description used



Welcome to the little DIY world, now come with me

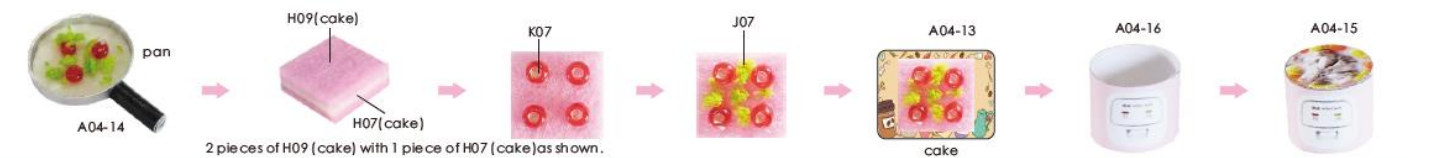
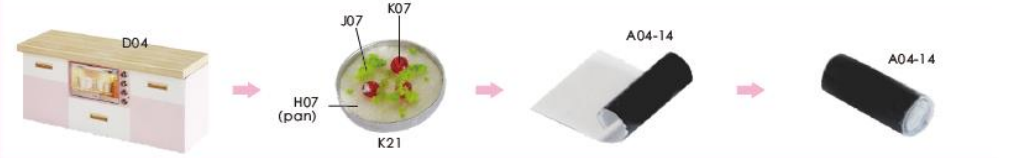
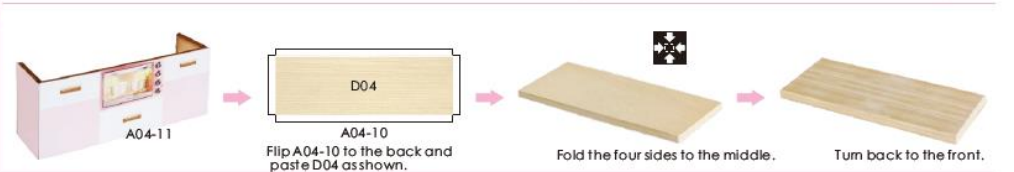
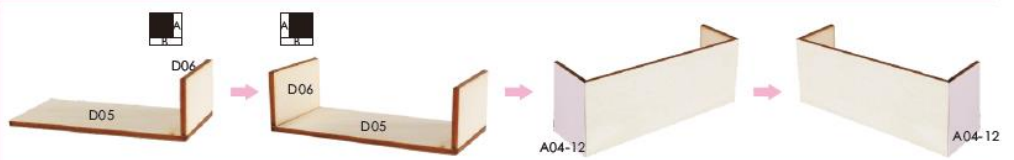
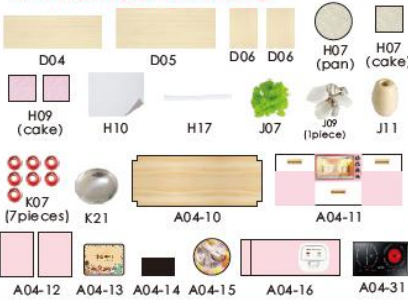
### Refrigerator



### Cabinet



Please cut out H07 (pan) (cake) and H09 (cake) according to the template paper before making.



When making, refer to the H17 wire electric cooker template for bending.



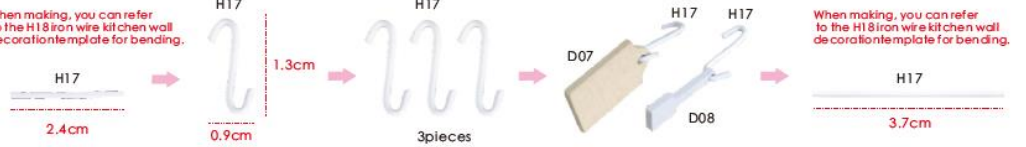
Cut out A04-27 to A04-40 printing sheets and affix to H10. Only A04-31 is used here, and the rest of the printing paper should be reserved for later steps.



Kitchen Wall Decoration



When making, you can refer to the H18 iron wire kit then wall decoration template for bending.



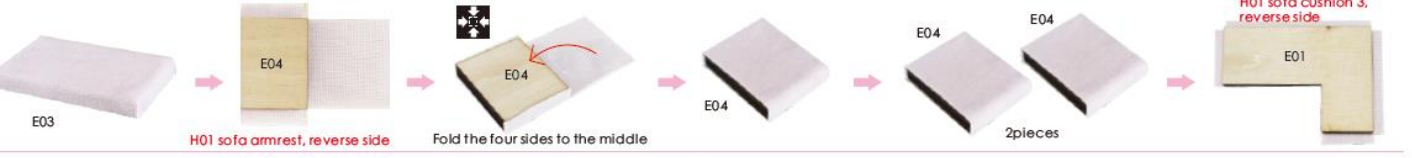
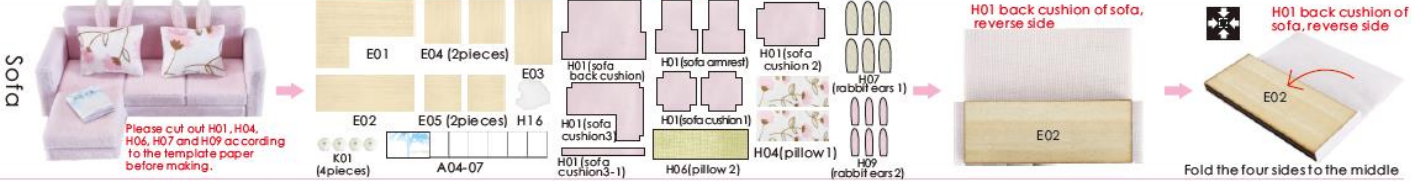
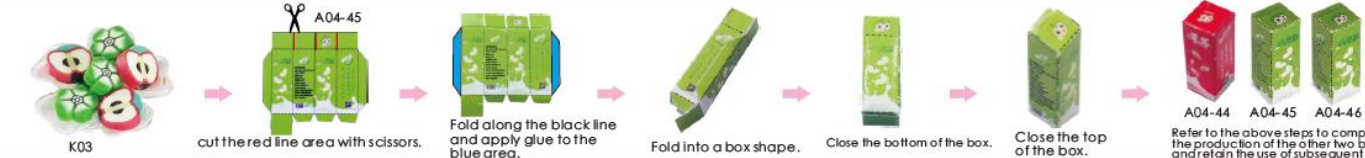
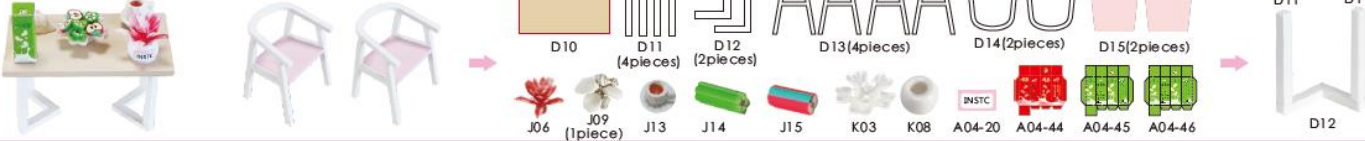
When making, you can refer to the H18 iron wire kit then wall decoration template for bending.

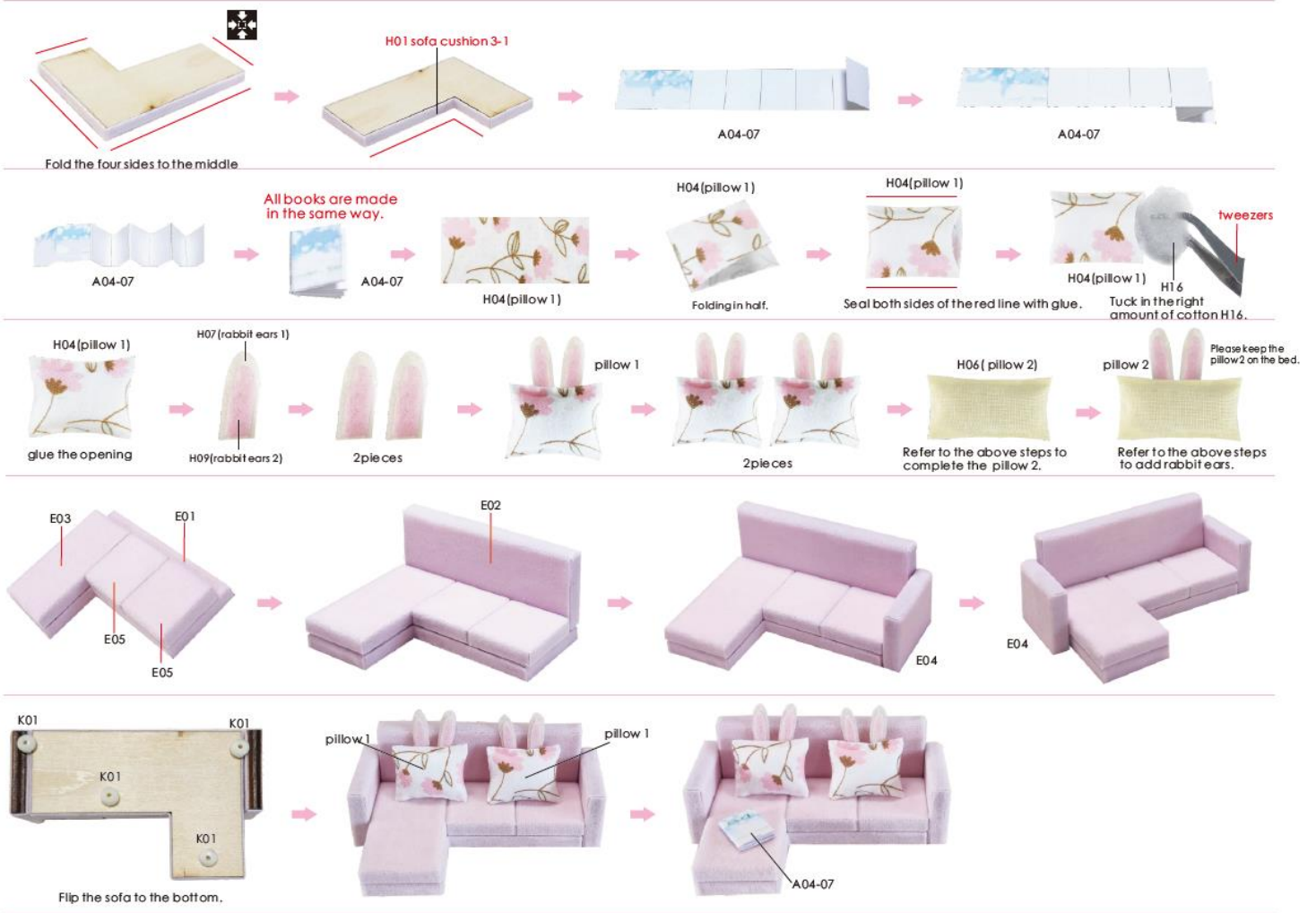


Add appropriate amount of J05 to H14 (Plant 1).

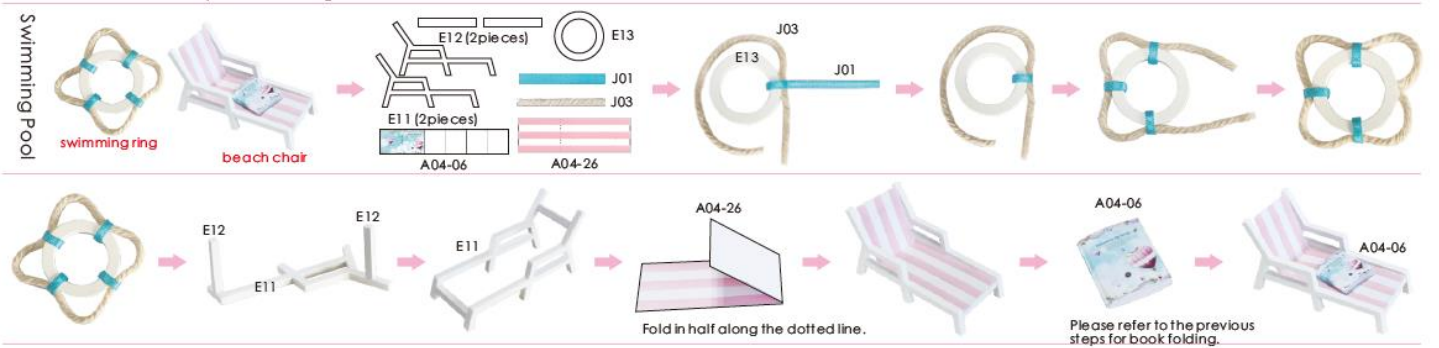
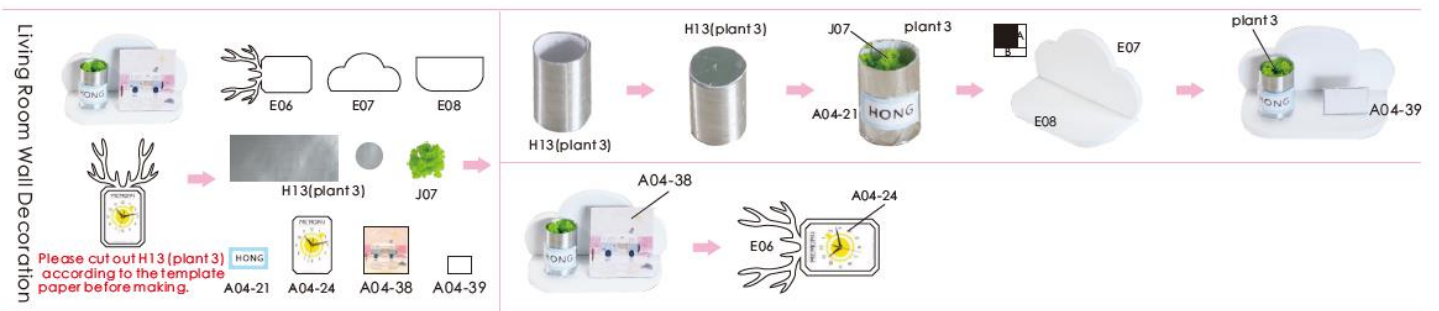
Refer to the above steps to complete the production of plants 2 and to retain the use of shelves.

Dining table and chair





6



7

**Bed**

Before making, please cut out H02, H03, H05, H07 and H09 according to the template paper.

Stick H07 (mattress-1) in the middle of F02.

Paste F02 with H07 face down and paste as shown in the figure.

Fold the four sides to the middle

Apply the glue to the red line.

Paste another piece of H02 (pillow 3) as shown in the picture.

Tuck in the right amount of cotton H16.

Glue the opening.

Please bring your own pen to draw cute expressions.

Flip H03 (sheet) to the back and fold back 16mm.

Flip H03 (sheet) back to the front and fold back 16mm.

tidy up back angle

Fold the book according to the previous steps.

**Bedside Cabinet**

8

When making, refer to the H17 wire bedroom light template for bending.

**台灯**

As shown in the figure, the wiring of the pasting lamp.

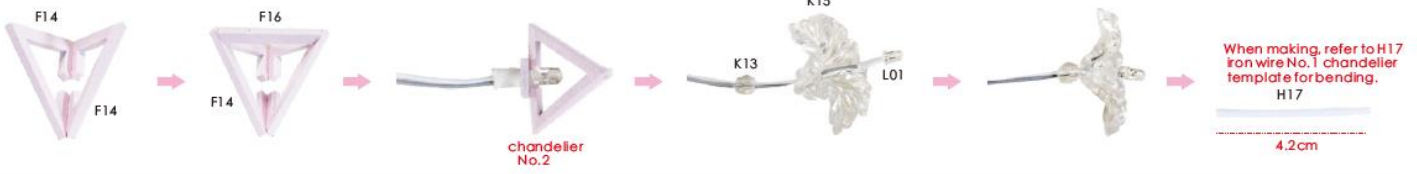
**Bookshelves**

Fold the book according to the previous steps.

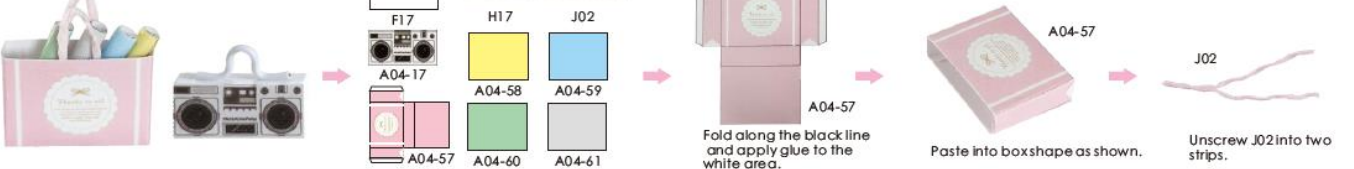
The previous steps have been made.

9

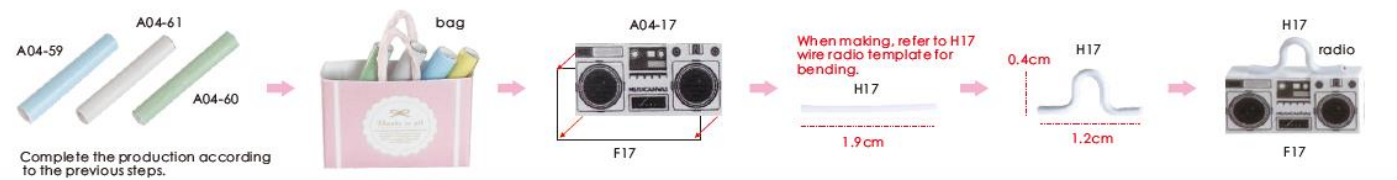
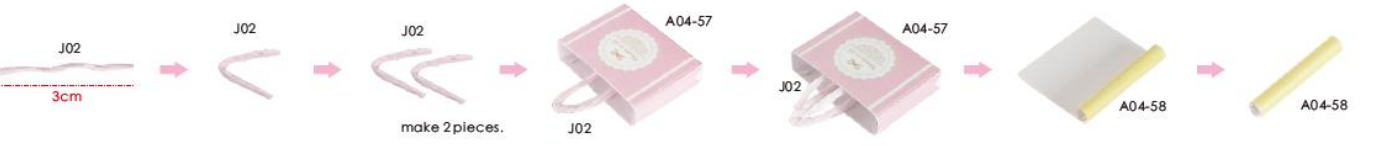
Chandelier



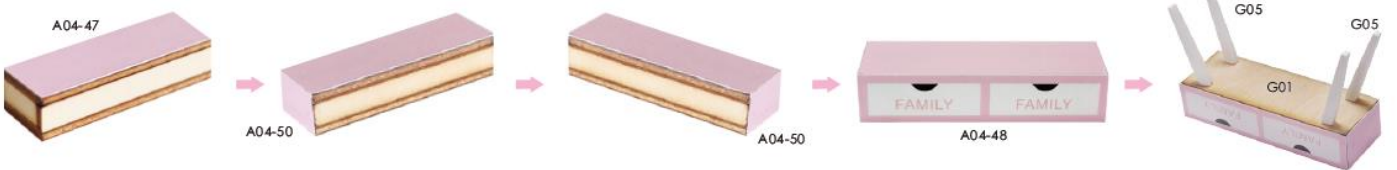
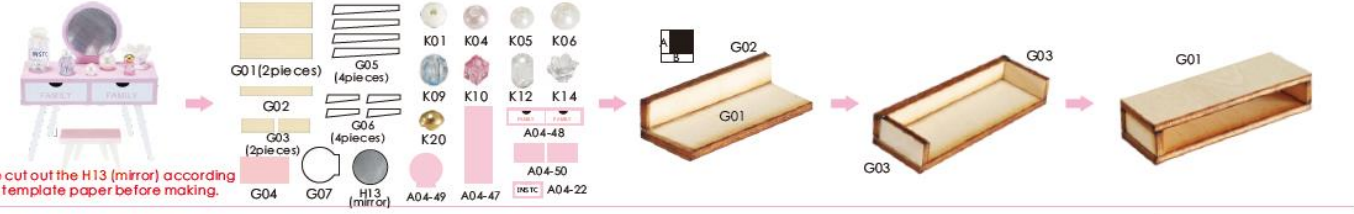
Bedroom accessories



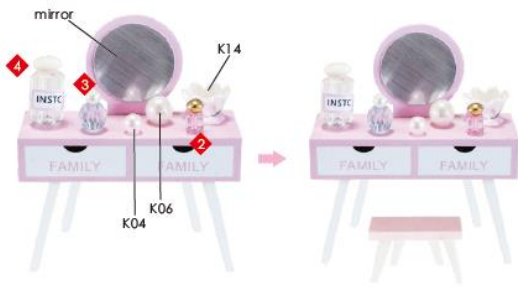
10



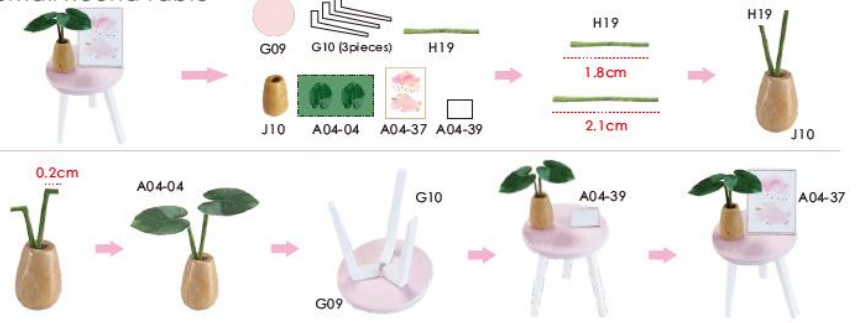
Dressing Table



11



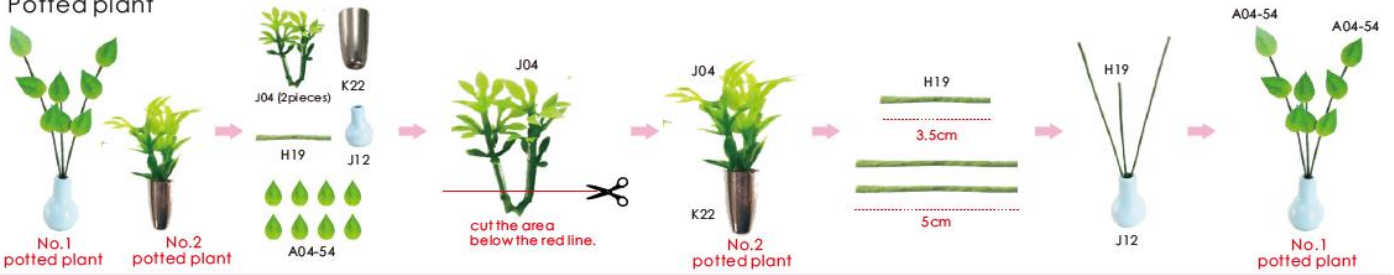
### Small Round Table



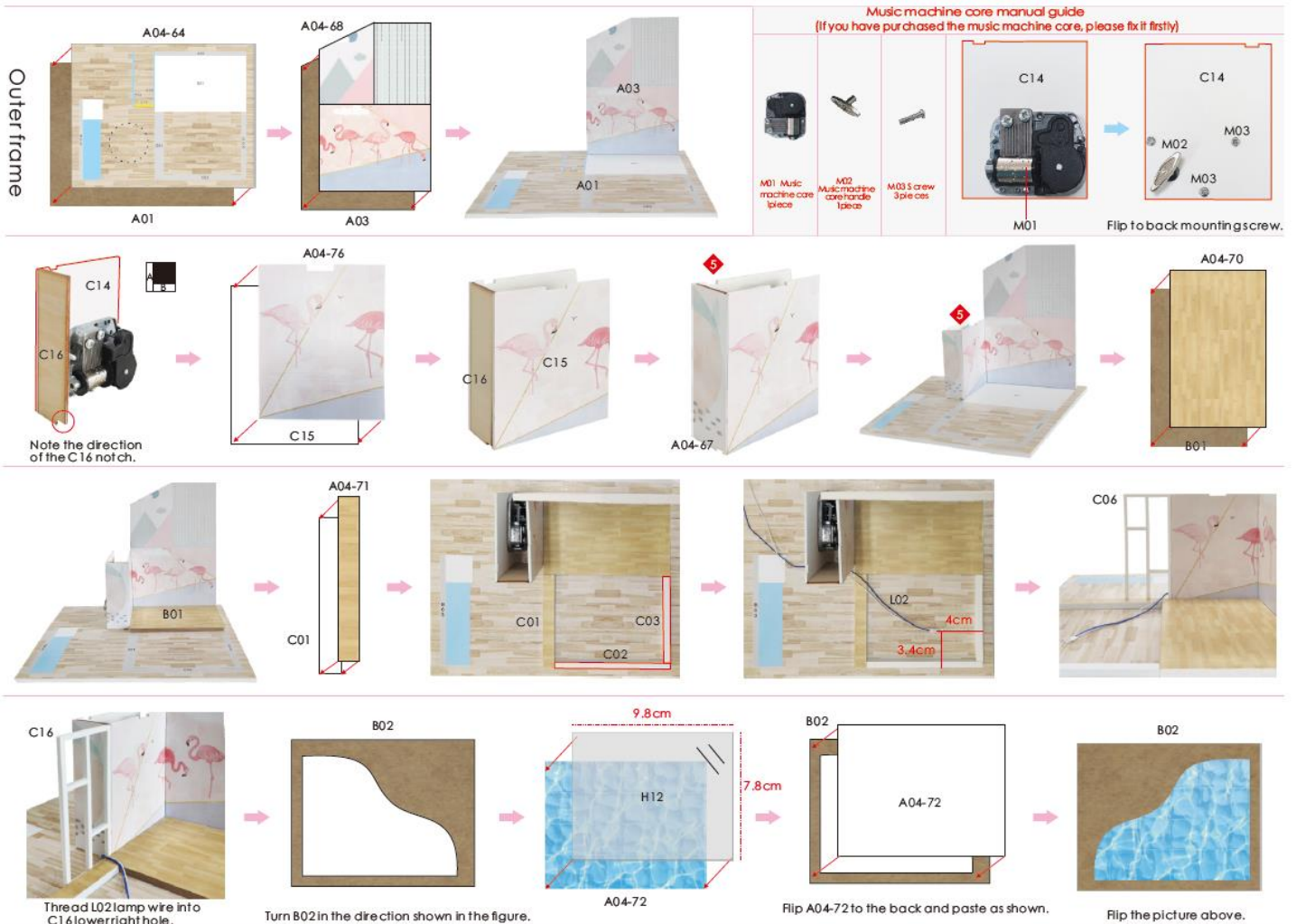
### The bathroom

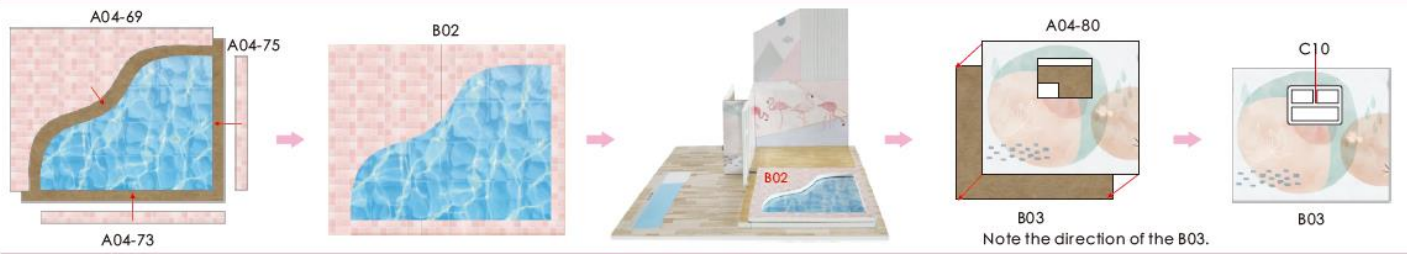


### Potted plant

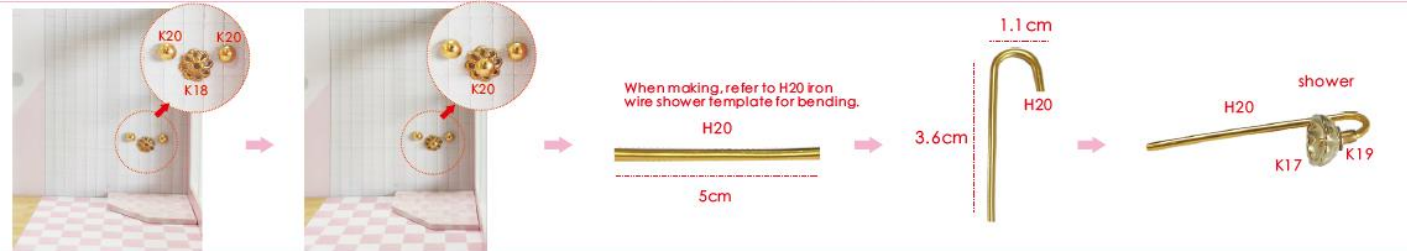
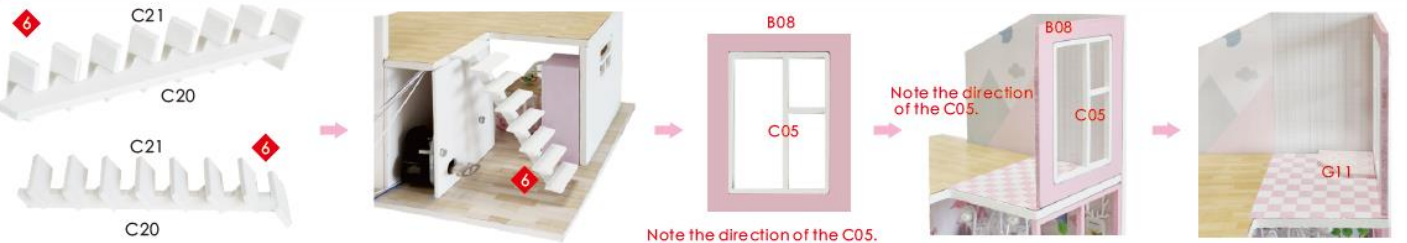
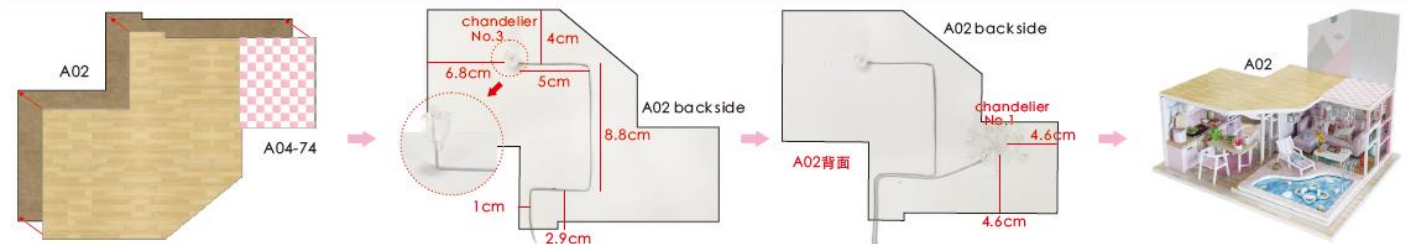


### Outer frame





14



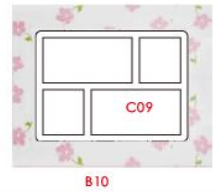
15



When making, refer to H18 wire handle template for bending.



Note the direction of the B10.



In the lower right corner, please leave a gap of 0.3mm.



Paste the lamp wire as shown in the figure.



Paste the lamp wire as shown in the figure.



Paste the lamp wire as shown in the figure.

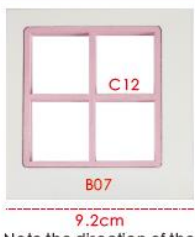
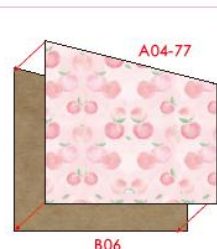


Note the direction of the B09.



Please leave a gap of 0.3cm above and to the left.

Please cut out the H15 according to the template paper before making.



Note the direction of the B07.

H15 (bedroom curtain)



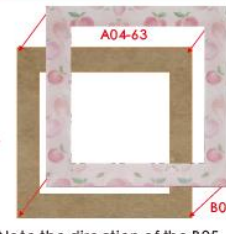
Please cut out the H15 (bedroom curtain) according to the template paper before making.



Paste the lamp wire as shown in the figure.



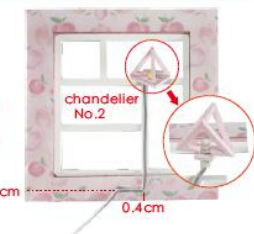
Thread the lamp wire into the C14 hole as shown in the figure.



Note the direction of the B05.



Note the direction of the B05.



Paste the lamp wire as shown in the figure.



Thread the lamp wire into the C14 hole as shown in the figure.



B04



### How to assemble the battery holder

Statement: the lamp wires cannot be inserted into the output socket.

- Can use 7 batteries
- Please notice the place of anode and cathode when put in the batteries
- Rechargeable batteries are not burnt electricity
- Rechargeable batteries can only be charged under adult supervision
- Rechargeable batteries should be removed from the toy before charging
- Different types of batteries cannot mix
- Do not mix new batteries in use with semi-used batteries.
- Run out of battery should be removed from the toy
- the power shall not be short circuit



Gather all the light wires to the back.



Distinguish lines of lights of the same color.



Use a craft blade to carefully skim over the plastic to bare the copper wire. Twist the same color wire together.



L03

Twist the following wire together:  
(I) BLACK wire from the battery box with the WHITE wire from LED bulb.  
(II) RED wire from the battery box with the GREY wire and blue wire from LED bulb.



L03

L04

Roll and seal the duly twist copper with the wire tape L04 provided.



Paste C17 wood as shown in the figure.



Put the battery box in.

### Installation of dust proof cover (For updated version, the parts need to be purchased separately)



scale 1:8  
M04 Transparent cover  
23\*18\*0.18cm  
1 piece



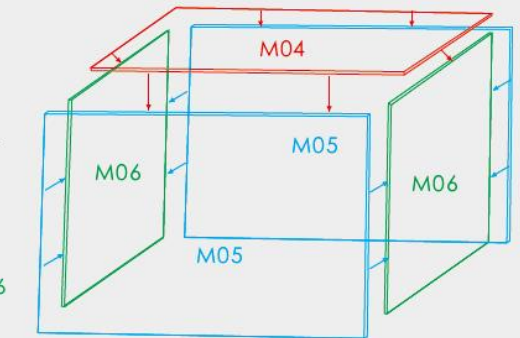
scale 1:8  
M05 Transparent cover  
23\*20\*0.18cm  
2 pieces



scale 1:8  
M06 Transparent cover  
20\*17.64\*0.18cm  
2 pieces



1. Tear off kraft paper of each piece of transparent cover.



2. Paste M04, M05 and M06 together to complete the dust proof cover as shown.