

First meet



Instruction manual

NOTICE OF ASSEMBLE

Tips for assembling

1. Pictures shown on the package may be slightly different from the actual product.
2. All the materials are taken in the operation step, put the remaining materials back into the original pocket until the installation is completed. (Avoid material loss during installation)
3. The dimensions indicated in the step diagram are "cm".
4. If there have template paper material, please cut the material according to the template to avoid mistakes.
5. According to the part rule example at the bottom of this page, refer to the part on the part number drawing, find the material object and compare with the material list, confirm and install. (Wooden parts only)
6. Glue should not be applied too much, so as not to dry longer, overflow will affect the effect of the finished product.
7. Part shapes may differ from the photographs depending on the production batch

Product comes with tool:

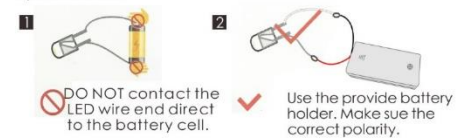
- | | | | | | |
|---|--|---|---|--|---|
| 1
 | 2
 | 3
 | 4
 | 5
 | 6
 |
| White glue:
It dries slowly and can paste materials firmly without trace. Can be used to paste wallpaper and printed paper. | Ruler:
For measuring materials to identify the number of materials so as to enhance work efficiency. | Scissors:
Can be used to cut printed paper, cloth, etc. | Cutter knife:
For peeling off power wire skin and cutting off materials. | Alcohol gel:
It dries fast and can paste materials firmly, but may leave some trace. Can be used to paste small metal materials and small components of furniture. | Tweezers:
For holding small materials and rolling up iron wire. |

Bring your own tools:

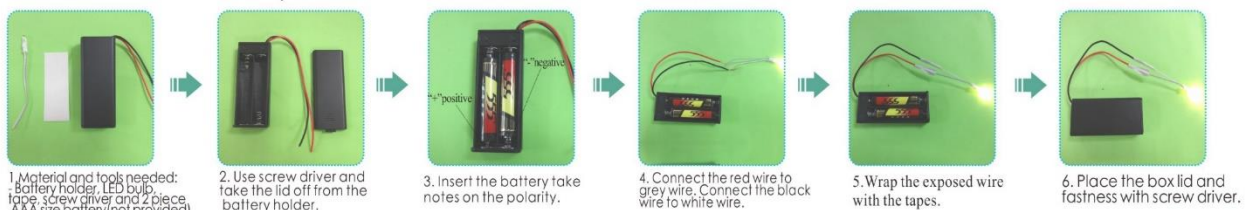
- | | | |
|--|---|---|
| 1
 | 2
 | 3
 |
| Screw Driver:
For fixing screws, mostly can be used to install doors and music components. | Drill:
Can be used to drill holes in timbers, roll up hard iron wire or fix screws. | Needle-nose pliers:
For cutting, bending wire, folding harder material. |

Testing on LED function

Be sure to test the LED lights before making the lighting, note that the LED white wire to the negative, gray wire to the positive reference to the following figure operation test.



How to assemble the battery holder



Example of parts rule:

A01: The parts are directly in the box.; B01: parts in bag B; C01: part in bag C, and so on.
(Note: display the printing paper A04-01 in the step: the printing paper is placed directly in the box, part number is A04-01)

details of miniature kit

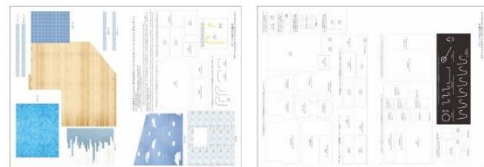
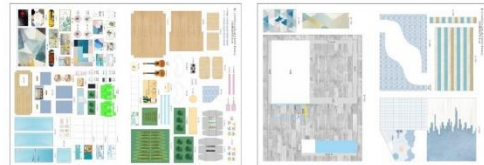
Name	Material package
printing paper	Bag A-A04(All printing and template papers are shown on A04 paper, total 4 pieces A3)
refrigerator	D bag + printing paper
cabinet	D bag + H bag + J bag + printing paper
kitchen decoration	D bag + H bag + J bag + printing paper
dining table and dining chair	D bag + H bag + J bag + printing paper
sofa	E bag + H bag + J bag + printing paper
living room wall decoration	E bag + H bag + J bag + printing paper
ted table	E bag + H bag + J bag + printing paper
swimming pool	E bag + H bag + printing paper
bed	F bag + H bag + printing paper
bedside table	F bag + H bag + J bag + K bag + printing paper
bookcase	F bag + H bag + J bag + printing paper
light	F bag + H bag + J bag + K bag
bedroom widget	F bag + H bag + J bag + printing paper
computer desk	G bag + H bag + J bag + K bag + printing paper
chair	G bag + H bag + printing paper
bathroom	G bag + H bag + printing paper
potted plant	J bag + H bag + printing paper
outer frame	A bag + B bag + C bag + G bag + H bag + J bag + K bag + printing paper

Welcome to the little DIY world, now come with me

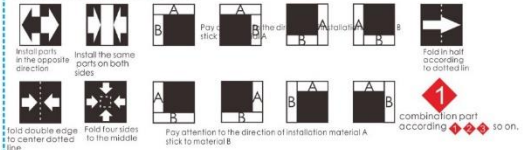
Thumbnail of material list (reference only)



Thumbnail of printing paper & template paper (reference only)



Symbol description used



Refrigerator

Assembly steps for the refrigerator: 1. Assemble side panels D01, D02, D02, D03. 2. Attach top panel D02 to side panels. 3. Attach bottom panel D02 to side panels. 4. Assemble front panels A04-01, A04-02, A04-02, A04-03. 5. Attach front panels to the main body. 6. Attach door panels A04-04 to the front.

Cabinet

Assembly steps for the cabinet: 1. Assemble side panels D04, D05, D06, D06. 2. Attach top panel D06 to side panels. 3. Attach front panel A04-10 to the main body. 4. Assemble front panels A04-08, A04-09, A04-10. 5. Attach front panels to the main body. 6. Assemble wash basin H13 with template paper H18, H21, H24, J05, J17, J18. 7. Attach wash basin to the main body. 8. Assemble top panels A04-11, A04-12, A04-16, A04-23. 9. Attach top panels to the main body. 10. Attach final top panel A04-11.

Notes:
 - Cut out the material H06 according to the template paper before making.
 - Cut out the red dotted area.
 - Flip H13 to the reverse.
 - Stick the template paper on the back of H13 and cut it out.
 - The face of the bright silver paper is facing inside, and the four sides are folded toward the middle.

When making, you can refer to the H18 iron wire electric cooker template for bending.

4.2cm
1.4cm
0.8cm
0.35cm
0.4cm
H18
2pieces
H18

When making, you can refer to the H18 iron wire electric cooker template for bending.

Only A04-19 to A04-39 printing paper and paste it on to H09.

Only A04-23 is needed here. Please save the remaining printed paper for the next step.

When making, you can refer to the H21 iron wire faucet template for bending.

2cm
0.5cm
1.4cm
H21
J17

When making, you can refer to the H18 iron wire kitchen wall decoration template for bending.

2.4cm
1.3cm
0.9cm
3pieces
H18
H18

When making, you can refer to the H18 iron wire kitchen wall decoration template for bending.

3.7cm
2.8cm
0.5cm
H18
H18

When making, you can refer to the H18 iron wire kitchen wall decoration template for bending.

2.1cm
1.8cm
0.2cm
H20
H20

When making, you can refer to the H18 iron wire kitchen wall decoration template for bending.

2.1cm
1.8cm
0.2cm
H20
H20

Cut out the material H06, H08 and H11 according to the template paper before making.

dining table
dining chair

H11 (grass)
Use scissors to cut it open as shown.

H11 (grass)
J06
2pieces
A04-17
A04-18
Use the left side of the dining table, the right side please keep to the computer table.

Cut the fruit strips into 1-2mm long with a knife.

[Cut each into 5 small pieces.]

Cut the red line area with a pair of scissors.

Fold along the black line and coat the blue area with glue.

Fold into the shape of a box.

Close the bottom of the box.

Close the top of the box.

2 pieces of H08 sandwiched with 1 piece of H06

cake

2pieces

Sofa

Cut out the material H01, H03 and H06 according to the template paper before making.

Fold four sides to the center.

E05 Face down with non-woven as shown.

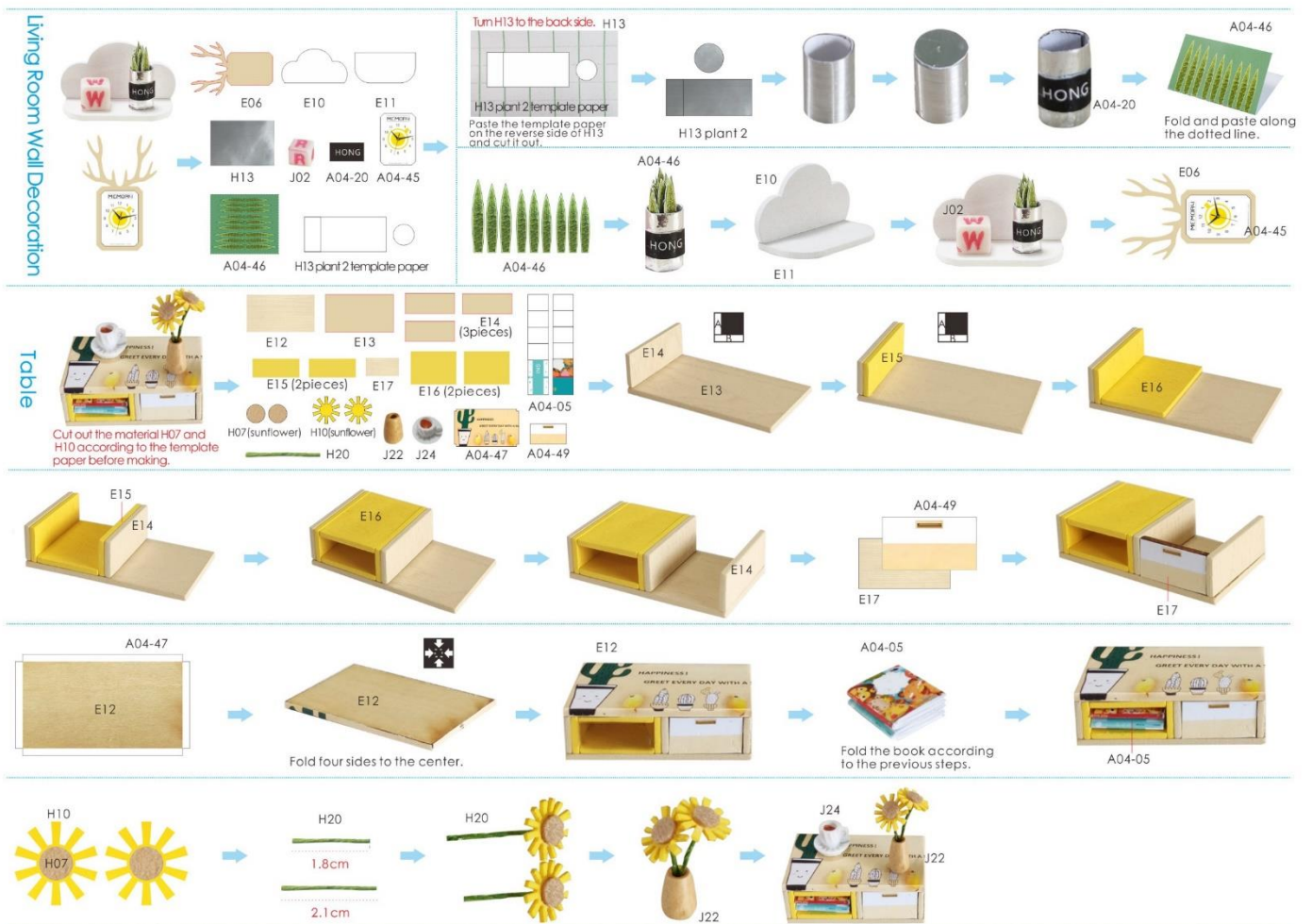
Fold four sides to the center.

2pieces

E03 Face down with non-woven as shown.

Fold four sides to the center.

Fold four sides to the center.



Swimming Pool

swimming ring beach chair

E19 (2pieces) E20 H16 H17

E18 (2pieces) A04-06 A04-48

H17 E20 H16

E19 E18 A04-48 A04-06 A04-06

Fold in half along the dotted line. Fold the book according to the previous steps.

Bed

Please cut out H01, H02, H04, H05 and H06 according to the template paper before making.

ukulele

F01 F02 F03 F04 (2pieces) F05

H01 (sheet) H02 (mattress) H04 (pillow 2) H05 (pillow 2) H06 (mattress-1)

A04-07 A04-51 A04-58 A04-50

F03 A04-58

Fold four sides to the center.

A04-51 F03 F01 F04 F03 F01

F02 H02 mattress F02 F02 Face down with non-woven as shown. H01 (sheet) Fold four sides to the center. 1.6cm 8.7cm 6.2cm 7.1cm 6.2cm Folding 1.6 cm as shown. 1.6cm 5.5cm 6.2cm Flip the image to the back and fold it back.

F02 H01 H04 (pillow 2) H05 (pillow 2) Make a pillow according to the previous steps. A04-07 Fold the book according to the previous steps. A04-50 F05

Bedside Cabinet

F06 (2pieces) F07 (2pieces) F08 (2pieces) A04-54

H18 J01 A04-40 A04-42 A04-62 A04-63

K01 J23

F07 A04-62

Fold four sides to the center. 2pieces

F08 F08 F07 F06 F06 F08 F07

2pieces

When making, you can refer to the H18 iron wire bedroom light template for bending.

H18 3.5cm 6cm 2.5cm 1cm H18 A04-54 A04-54 A04-54 J01 A04-54

Bookcase

Please cut out H01, H02, H03, H04 and H05 according to the template paper before making.

F10 (2pieces) F11 F12 (3pieces) F09 F13 (3pieces) F14 (3pieces) F15 (4pieces) H01 (bookshelf cloth) H02 (bookshelf cloth) H03 (bookshelf cloth) H04 (bookshelf cloth) H05 (bookshelf cloth) H13 H24 J02

A04-39 A04-41 A04-42 A04-57 A04-21

A04-59 A04-60 H13 (plant 1)

1.5cm 1.6cm 1.8cm

Legend:
 Blue: F10, F11, F12
 Green: F13, F14, F15
 Yellow: F13, F14, F15
 Red: F12

10

F11 → F10 → F13 → F10 → F13 → F14 → F15

F12 → A04-59 → A04-60 → F09 → H18 (1.9cm x 1.2cm) → H18 (0.4cm x 1.2cm)

Fold into a box.

When making, you can refer to the H18 iron wire radio template for bending.

Turn H13 to the back side. H13
Paste the template paper on the back side of H13 and cut it out.

H13 (plant 1) → H13 (plant 1) → H24 → H05 (bookshelf cloth)

H05 (bookshelf cloth) → Folding in half → Double fold → H05 (bookshelf cloth)

H01 (bookshelf cloth) H02 (bookshelf cloth) H03 (bookshelf cloth) H04 (bookshelf cloth)

Complete the folding of the four pieces of cloth according to the previous steps.

A04-42 → A04-41 → A04-39 → A04-60

J02 → A04-42 → F09 → A04-41 → A04-39 → A04-60

Light

Chandelier No.1 Chandelier No.2 Chandelier No.3 (2pieces)

F16 (2pieces) F17 F18 J04 (6pieces) J10 (3pieces) J12 (6pieces) J13 (6pieces) K01 (4pieces)

F17 → K01 → F16 → F16 → F16

11

J12 → J10 → K01 → H18 (4.2cm) → H18 (1.8cm) → J13 → 6pieces

When making, you can refer to the H18 iron wire chandelier 1 template for bending.

J10 → K01 → J08 → 2.5cm → 2pieces

Please cut out H01, H02, H03, H04 and H05 according to the template paper before making.

Shoe blanket cloth barrel slide plate

H01 (slippers) H02 (cloth barrel) H03 (cloth barrel) H04 (cloth barrel) H05 (cloth barrel)

F19 (4pieces) H18 A04-25 A04-53 A04-31 → H01 (slippers) H05 (slippers) → A04-31

J03 (8pieces) A04-27 A04-55 A04-56 H01 (slippers) H05 (slippers)

A04-55 → A04-53 → A04-56 → 2.2cm → H02 (cloth barrel) → 2.6cm → Gently roll up. → H02 (cloth barrel) → 2.2cm → H03 (cloth barrel) H04 (cloth barrel) H05 (cloth barrel) → Complete the folding of the four pieces of cloth according to the previous steps.

H18 → J03 → J03 → A04-25 back side → A04-27 back side → A04-25

Bedroom widget

Shoe blanket cloth barrel slide plate

A04-55 → A04-53 → A04-56 → 2.2cm → H02 (cloth barrel) → 2.6cm → Gently roll up. → H02 (cloth barrel) → 2.2cm → H03 (cloth barrel) H04 (cloth barrel) H05 (cloth barrel) → Complete the folding of the four pieces of cloth according to the previous steps.

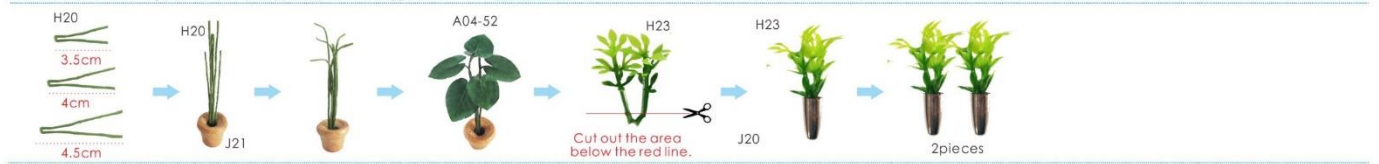
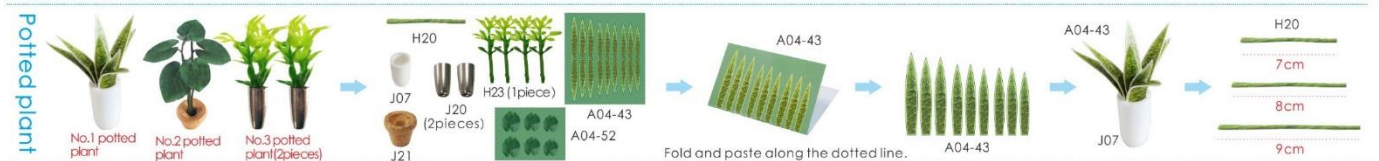
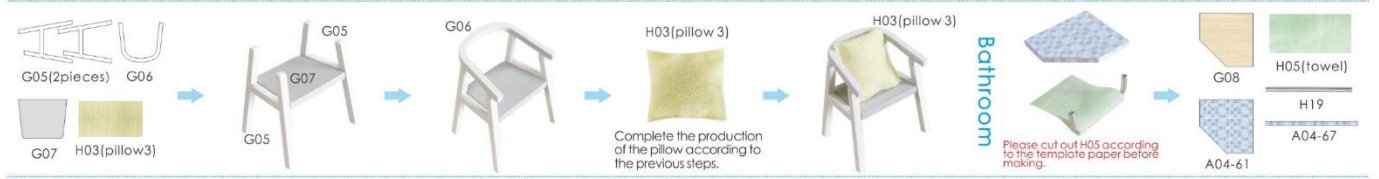
H18 → J03 → J03 → A04-25 back side → A04-27 back side → A04-25

Computer Desk

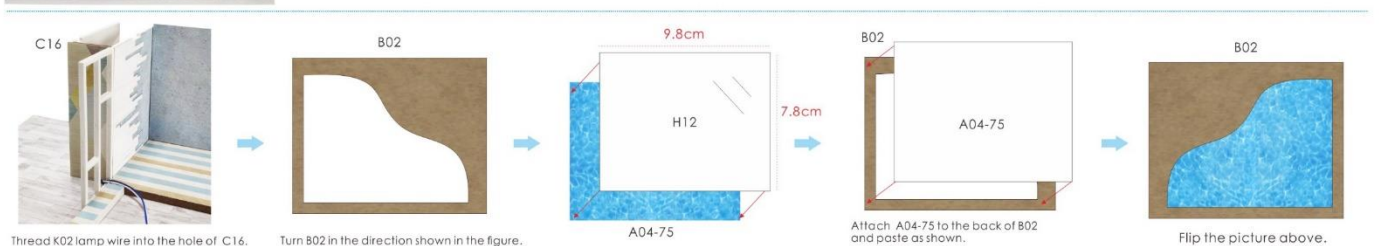
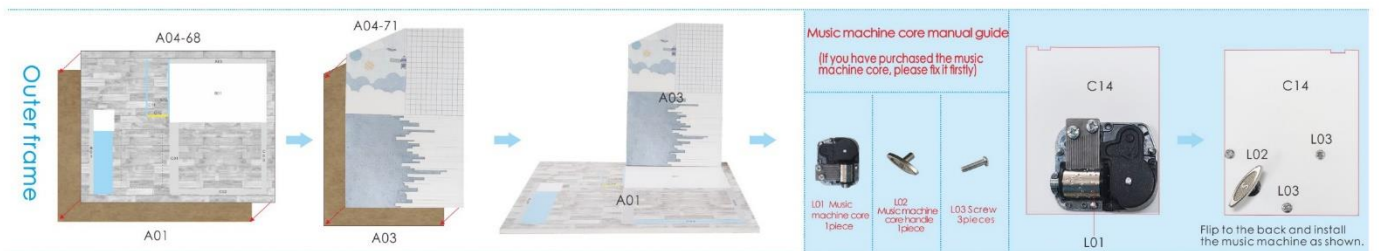
G01 G02 (4pieces) G03 J01 J02 K01 → A04-66 → A04-65

J03 (2pieces) H14 INSTC A04-14 A04-34 A04-38 → A04-66 → A04-65

J09 A04-64 A04-65 A04-66



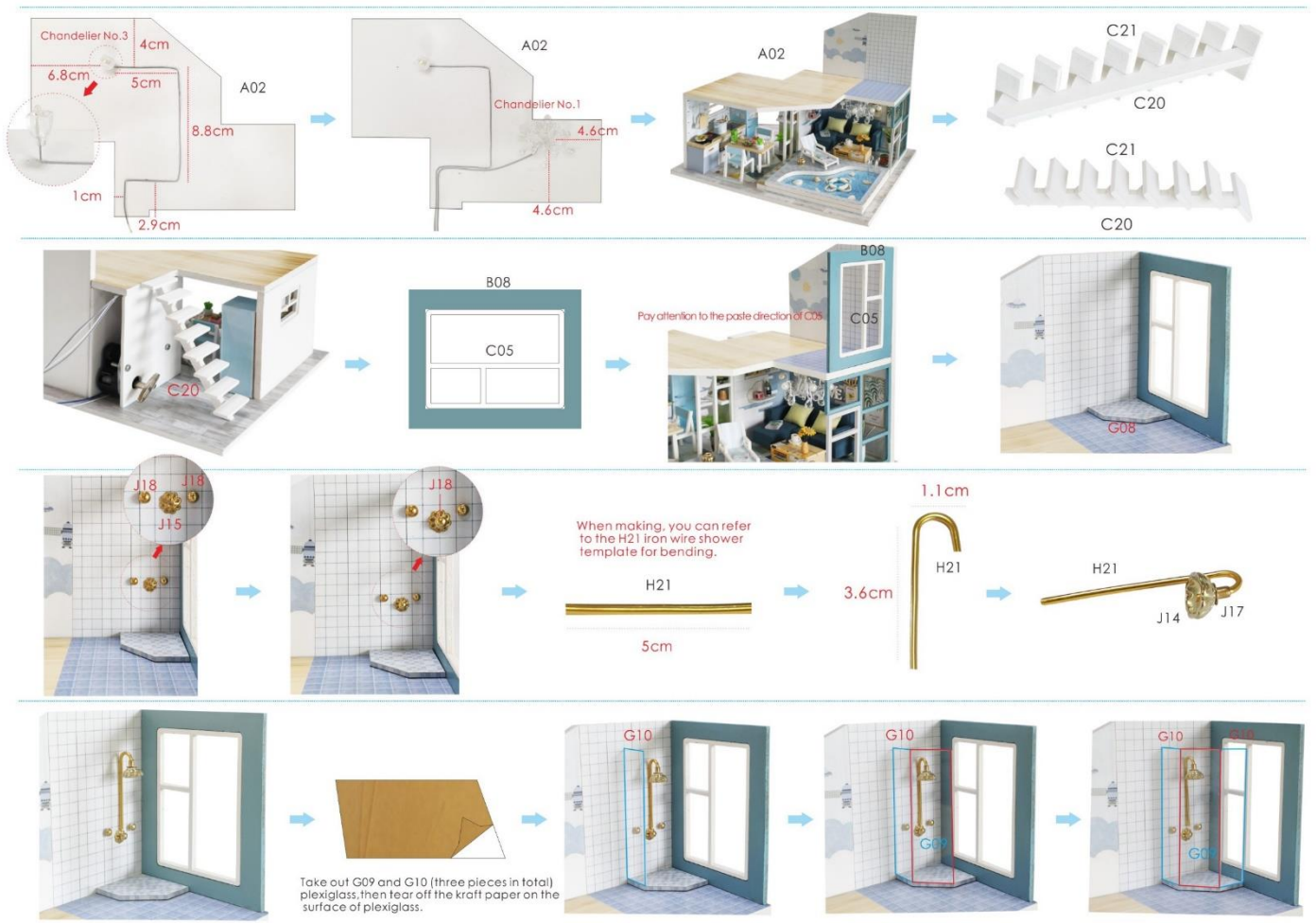
12



13



14



15



16



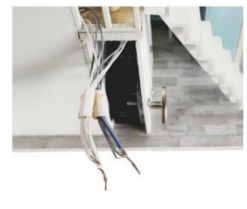
17



Gather all the light wires to the back.



Use a craft blade to carefully skim over the plastic to bare the copper wire. Twist the same color wire together.



Twist the following wire together:
 (I) BLACK wire from the battery box with the WHITE wire from LED bulb.
 (II) RED wire from the battery box with the GREY wire & BLUE wire from LED bulb.



Roll and seal the duly twist copper with the white tape K04 provided.



Paste C17 wood as shown in the figure.



Put the battery box in as shown.

Installation of dust proof cover (For updated version, the parts need to be purchased separately)



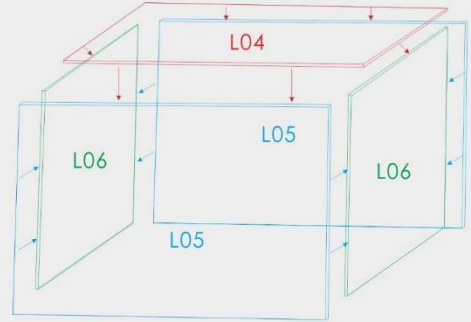
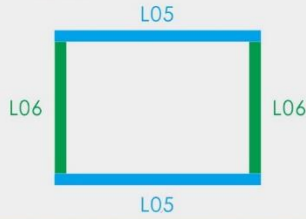
scale 1:8
 L04 Transparent cover
 23*18*0.15cm
 1 piece



scale 1:8
 L05 Transparent cover
 23*20*0.15cm
 2 pieces



scale 1:8
 L06 Transparent cover
 20*17.7*0.15cm
 2 pieces



M910 Material list unit:cm

(1/4)

Bag A		scale: 9 A01 board (white edge) 23*18*0.5cm(1piece)	scale: 8 A02 board (white) 21*16*0.5cm(1piece)	scale: 7 A03 board (white) 17.3*11.5*0.5cm(1piece)	Bag B		scale: 5 B01 board (white edge) 11.5*7*0.5cm(1piece)	scale: 5 B02 board (white edge) 10.6*8.5*0.5cm(1piece)	scale: 5 B03 board (white) 10*8.5*0.5cm(1piece)
scale: 5 B04 board (light grey) 9.5*9*0.5cm(1piece)	scale: 5 B05 board (blue-grey) 10*9.8*0.5cm(1piece)	scale: 5 B06 board (white) 9.5*9*0.3cm(1piece)	scale: 5 B07 board (white) 9.2*9*0.3cm(1piece)	scale: 4 B08 board (blue-grey) 8.3*7*0.3cm(1piece)	scale: 4 B09 board (blue-grey) 8.3*5.8*0.3cm(1piece)	scale: 4 B10 board (blue-grey) 6.7*5.5*0.3cm(1piece)	Bag C		
scale: 3 C01 wood (white) 8.5*1.1*0.5cm(1piece)	scale: 4 C02 wood (white) 10.4*0.6*0.5cm(1piece)	scale: 4 C03 wood (white) 7.9*0.6*0.5cm(1piece)	scale: 4 C04 wood (white) 7.5*7*0.3cm(1piece)	scale: 3 C05 wood (white) 6.7*4.8*0.3cm(1piece)	scale: 3 C06 wood (white) 8.5*3.5*0.3cm(1piece)	scale: 3 C07 wood (white) 8*3*0.3cm(1piece)	scale: 2 C08 wood (white) 5.6*2.8*0.3cm(1piece)	scale: 2 C09 wood (white) 5.2*4*0.3cm(1piece)	scale: 2 C10 wood (white) 3.5*2.5*0.3cm(1piece)
scale: 2 C11 wood (light grey) 5.5*3.4*0.3cm(1piece)	scale: 4 C12 wood (blue-grey) 6.8*6.6*0.3cm(1piece)	scale: 4 C13 wood (blue-grey) 8*7*0.3cm(1piece)	scale: 4 C14 wood (white) 8.5*6.8*0.2cm(1piece)	scale: 4 C15 wood (white) 8.5*6.8*0.2cm(1piece)	scale: 4 C16 wood (wood color) 8.5*2.4*0.2cm(1piece)	scale: 2 C17 wood (white) 5*2.4*0.2cm(1piece)	scale: 3 C18 wood (white) 7.3*1.8*0.2cm(1piece)	scale: 3 C19 wood (white) 3.7*1.8*0.2cm(1piece)	scale: 4 C20 wood (white) 10.8*1.2*0.5cm(1piece)
scale: 2 C21 wood (white) 3*1*0.2cm(8pieces)	Bag D		scale: 3 D01 wood (wood color) 7*2.5*0.2cm(1piece)	scale: 3 D02 wood (wood color) 7*2.3*0.2cm(2pieces)	scale: 2 D03 wood (wood color) 2.3*2.1*0.2cm(2pieces)	scale: 3 D04 wood (wood color) 7.5*2.5*0.3cm(1piece)	scale: 3 D05 wood (wood color) 7.5*3*0.2cm(1piece)	scale: 2 D06 wood (wood color) 3*2.1*0.2cm(2pieces)	scale: 1 D07 wood (beige) 1.8*1.3*0.15cm(1piece)
scale: 1 D08 wood (light grey) 1.5*0.6*0.15cm(1piece)	scale: 1 D09 wood (white) 2.4*1*0.2cm(1piece)	scale: 2 D10 wood (beige) 4.7*2.6*0.2cm(1piece)	scale: 1 D11 wood (white) 2.4*0.3*0.2cm(4pieces)	scale: 1 D12 wood (white) 1.5*1.5*0.2cm(2pieces)	scale: 2 D13 wood (white) 3.5*2.3*0.2cm(4pieces)	scale: 1 D14 wood (light blue) 1.9*1.9*0.2cm(2pieces)	scale: 1 D15 wood (light blue) 1.9*0.8*0.2cm(2pieces)	Bag E	
scale: 3 E01 wood (wood color) 7.2*5*0.5cm(1piece)	scale: 3 E02 wood (wood color) 7.2*2.6*0.5cm(1piece)	scale: 3 E03 wood (wood color) 4.4*2.4*0.5cm(1piece)	scale: 2 E04 wood (wood color) 2.8*2.2*0.5cm(2pieces)	scale: 2 E05 wood (wood color) 2.3*2.3*0.5cm(2pieces)	scale: 2 E06 wood (beige) 3.2*2.1*0.2cm(1piece)	scale: 1 E07 wood (white) 1*1*0.2cm(1piece)	scale: 1 E08 wood (white) 1*1*0.2cm(1piece)	scale: 1 E09 wood (white) 1.8*1*0.2cm(1piece)	scale: 1 E10 wood (white) 2.6*1.4*0.15cm(1piece)
scale: 1 E11 wood (white) 2.4*1.2*0.15cm(1piece)	scale: 2 E12 wood (wood color) 4*2*0.15cm(1piece)	scale: 2 E13 wood (beige) 4*2*0.15cm(1piece)	scale: 1 E14 wood (beige) 2.2*0.9*0.15cm(3pieces)	scale: 1 E15 wood (yellow) 2.2*0.9*0.15cm(2pieces)	scale: 1 E16 wood (yellow) 2.2*1.6*0.15cm(2pieces)	scale: 1 E17 wood (wood color) 1.6*0.9*0.15cm(1piece)	scale: 2 E18 wood (white) 4.6*2.4*0.2cm(2pieces)	scale: 1 E19 wood (white) 1.6*0.2*0.2cm(2pieces)	scale: 1 E20 wood (white) 2*2*0.3cm(1piece)
Bag F		scale: 3 F01 board (wood color) 7.5*3*0.5cm(1piece)	scale: 3 F02 board (wood color) 7.3*5*0.5cm(1piece)	scale: 2 F03 wood (wood color) 5.5*3.5*0.3cm(1piece)	scale: 1 F04 round wood (wood color) φ0.3*0.6cm(2pieces)	scale: 2 F05 wood (beige) 4*1.4*0.3cm(1piece)	scale: 2 F06 wood (white) 3.2*1.1*0.2cm(2pieces)	scale: 2 F07 wood (wood color) 3.6*1.5*0.2cm(2pieces)	scale: 2 F08 wood (wood color) 2.2*1.5*0.2cm(2pieces)
scale: 1 F09 wood (white) 1.8*0.9*0.3cm(1piece)	scale: 2 F10 wood (light blue) 5.5*1.5*0.2cm(2pieces)	scale: 2 F11 wood (light blue) 4.6*1.5*0.2cm(1piece)	scale: 2 F12 wood (light blue) 2.6*1.5*0.2cm(3pieces)	scale: 1 F13 wood (light blue) 1.5*1.5*0.2cm(3pieces)	scale: 1 F14 wood (light blue) 1.4*0.7*0.2cm(3pieces)	scale: 1 F15 wood (light blue) 1.3*0.5*0.2cm(4pieces)	scale: 1 F16 wood (light blue) 2*1.7*0.15cm(2pieces)	scale: 1 F17 wood (light blue) 0.7*0.7*0.15cm(1piece)	scale: 1 F18 wood (light blue) 1.7*0.3*0.15cm(1piece)
scale: 1 F19 wood (white) 1.7*0.8*0.2cm(4pieces)	Bag G		scale: 2 G01 wood (light blue) 5*2.5*0.2cm(1piece)	scale: 2 G02 wood (light blue) 5*2.5*0.2cm(1piece)	scale: 2 G03 wood (light blue) 5*2.5*0.2cm(1piece)	scale: 2 G04 wood (light blue) 5*2.5*0.2cm(1piece)	scale: 2 G05 wood (light blue) 5*2.5*0.2cm(1piece)	scale: 2 G06 wood (light blue) 5*2.5*0.2cm(1piece)	scale: 2 G07 wood (light blue) 5*2.5*0.2cm(1piece)

M910 Material list Unit: cm

(2/4)

scale: 1 D11 wood (white) 2.4*0.3*0.2cm(4pieces)	scale: 1 D12 wood (white) 1.5*1.5*0.2cm(2pieces)	scale: 2 D13 wood (white) 3.5*2.3*0.2cm(4pieces)	scale: 1 D14 wood (light blue) 1.9*1.9*0.2cm(2pieces)	scale: 1 D15 wood (light blue) 1.9*0.8*0.2cm(2pieces)	Bag E		scale: 3 E01 wood (wood color) 7.2*5*0.5cm(1piece)	scale: 3 E02 wood (wood color) 7.2*2.6*0.5cm(1piece)
scale: 3 E03 wood (wood color) 4.4*2.4*0.5cm(1piece)	scale: 2 E04 wood (wood color) 2.8*2.2*0.5cm(2pieces)	scale: 2 E05 wood (wood color) 2.3*2.3*0.5cm(2pieces)	scale: 2 E06 wood (beige) 3.2*2.1*0.2cm(1piece)	scale: 1 E07 wood (white) 1*1*0.2cm(1piece)	scale: 1 E08 wood (white) 1*1*0.2cm(1piece)	scale: 1 E09 wood (white) 1.8*1*0.2cm(1piece)	scale: 1 E10 wood (white) 2.6*1.4*0.15cm(1piece)	scale: 1 E11 wood (white) 2.4*1.2*0.15cm(1piece)
scale: 2 E12 wood (wood color) 4*2*0.15cm(1piece)	scale: 2 E13 wood (beige) 4*2*0.15cm(1piece)	scale: 1 E14 wood (beige) 2.2*0.9*0.15cm(3pieces)	scale: 1 E15 wood (yellow) 2.2*0.9*0.15cm(2pieces)	scale: 1 E16 wood (yellow) 2.2*1.6*0.15cm(2pieces)	scale: 1 E17 wood (wood color) 1.6*0.9*0.15cm(1piece)	scale: 2 E18 wood (white) 4.6*2.4*0.2cm(2pieces)	scale: 1 E19 wood (white) 1.6*0.2*0.2cm(2pieces)	scale: 1 E20 wood (white) 2*2*0.3cm(1piece)
Bag F		scale: 3 F01 board (wood color) 7.5*3*0.5cm(1piece)	scale: 3 F02 board (wood color) 7.3*5*0.5cm(1piece)	scale: 2 F03 wood (wood color) 5.5*3.5*0.3cm(1piece)	scale: 1 F04 round wood (wood color) φ0.3*0.6cm(2pieces)	scale: 2 F05 wood (beige) 4*1.4*0.3cm(1piece)	scale: 2 F06 wood (white) 3.2*1.1*0.2cm(2pieces)	scale: 2 F07 wood (wood color) 3.6*1.5*0.2cm(2pieces)
scale: 2 F08 wood (wood color) 2.2*1.5*0.2cm(2pieces)	scale: 1 F09 wood (white) 1.8*0.9*0.3cm(1piece)	scale: 2 F10 wood (light blue) 5.5*1.5*0.2cm(2pieces)	scale: 2 F11 wood (light blue) 4.6*1.5*0.2cm(1piece)	scale: 2 F12 wood (light blue) 2.6*1.5*0.2cm(3pieces)	scale: 1 F13 wood (light blue) 1.5*1.5*0.2cm(3pieces)	scale: 1 F14 wood (light blue) 1.4*0.7*0.2cm(3pieces)	scale: 1 F15 wood (light blue) 1.3*0.5*0.2cm(4pieces)	scale: 1 F16 wood (light blue) 2*1.7*0.15cm(2pieces)
scale: 1 F17 wood (light blue) 0.7*0.7*0.15cm(1piece)	scale: 1 F18 wood (light blue) 1.7*0.3*0.15cm(1piece)	scale: 1 F19 wood (white) 1.7*0.8*0.2cm(4pieces)	Bag G		scale: 2 G01 wood (light blue) 5*2.5*0.2cm(1piece)	scale: 2 G02 wood (light blue) 5*2.5*0.2cm(1piece)	scale: 2 G03 wood (light blue) 5*2.5*0.2cm(1piece)	scale: 2 G04 wood (light blue) 5*2.5*0.2cm(1piece)

M910 Material list unit: cm

(3/4)

scale: 1 G02 round wood (wood color) φ0.3*2.5cm(4pieces)	scale: 1 G03 wood (wood color) 1.2*0.7*0.3cm(1piece)	scale: 1 G04 wood (beige) 1.8*1.7*0.15cm(1piece)	scale: 2 G05 wood (white) 3*2.4*0.2cm(2pieces)	scale: 2 G06 wood (white) 2.7*2.4*0.2cm(1piece)	scale: 2 G07 wood (light grey) 2.3*1.8*0.2cm(1piece)	scale: 2 G08 wood (wood color) 3*3*0.2cm(1piece)	scale: 3 G09 plexiglass(transparent) 6.8*1.9*0.15cm(1piece)	
scale: 3 G10 plexiglass(transparent) 6.8*1.5*0.15cm(2pieces)	Bag H		H01 cloth (blue) 30*13cm (1piece)	H02 cloth (grey) 9.5*9.5cm (1piece)	H03 cloth (yellow) 8.5*8.5cm (1piece)	H04 cloth (white) 10.5*5cm (1piece)	H05 cloth (green) 12.5*5cm (1piece)	H06 non-woven fabric (beige) 14.5*9cm (1piece)
H07 non-woven fabric (brown) 2*1cm (1piece)	H08 non-woven fabric (pink) 3*1.2cm (1piece)	H09 cardboard (white) 18*11cm (1piece)	H10 sponge paper (yellow) 3*3cm (1piece)	H11 sponge paper (green) 3*3cm (1piece)	H12 PVC film (transparent) 9.8*7.8cm (1piece)	H13 paper (silver) 7*5cm (1piece)	H14 paper (yellow) 2.6*1.9cm (1piece)	
H15 lace (white) 9.5*8cm (1piece)	H16 ribbon (blue) 12cm (1piece)	H17 hemprope (beige) 11cm (1piece)	H18 iron wire (white) 66cm (1piece)	H19 iron wire (silver) 25cm (1piece)	H20 iron wire (green) 40cm (1piece)	H21 iron wire (golden) 10cm (1piece)	H22 cotton (white) some	
H23 artificial plant (green) (1piece)	H24 flower power (green) some	H25 resin toilet (white) (1piece)	H26 conch shell (random) (8pieces)	Bag J		J01 plastic bead (white) (6pieces)	J02 plastic bead (color) (3pieces)	J03 plastic bead (white) (13pieces)
J04 plastic bead (white) (6pieces)	J05 plastic bead (red) (8pieces)	J06 plastic bead (white) (2pieces)	J07 plastic bead (white) (1piece)	J08 plastic bead (transparent) (2pieces)	J09 plastic bead (transparent) (1piece)	J10 plastic bead (transparent) (3pieces)	J11 plastic bead (transparent) (1piece)	

M910 Material list unit: cm

(4/4)

J12 plastic bead (transparent) (1piece)	J13 plastic bead (transparent) (6pieces)	J14 plastic bead (golden) (3pieces)	J15 torus (golden) (2pieces)	J16 big torus (golden) (1piece)	J17 eyelet (golden) (2pieces)	J18 plastic bead (golden) (5pieces)	J19 plastic bead (silver) (1piece)
J20 plastic bead (silver) (2pieces)	J21 wooden bead (wood color) (1piece)	J22 wooden bead (wood color) (2pieces)	J23 wooden bead (wood color) (1piece)	J24 resin cup (white) (1piece)	J25 polymer clay (green) 1cm (1piece)	J26 polymer clay (red) 1cm (1piece)	Bag K
K01 LED lamp with wire (blue) (6pieces)	K02 LED lamp with wire (black) (1piece)	K03 battery holder (black) (1piece)	K04 adhesive paper (white) (1piece)	K05 sandpaper (red) (1piece)			