

M905

DIY mini house kits-- Auspicious Sign Loft



M905 Instruction manual

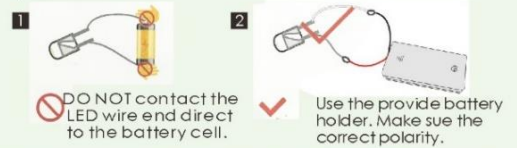
NOTICE OF ASSEMBLE

Tips for assembling

1. Pictures shown on the package may be slightly different from the actual product.
2. All the materials are taken in the operation step, put the remaining materials back into the original pocket until the installation is completed. (Avoid material loss during installation)
3. The dimensions indicated in the step diagram are "cm".
4. If there have template paper material, please cut the material according to the template to avoid mistakes..
5. According to the part rule example at the bottom of this page, refer to the part on the part number drawing, find the material object and compare with the material list, confirm and install. (Wooden parts only)
6. Glue should not be applied too much, so as not to dry longer, overflow will affect the effect of the finished product.
7. Part shapes may differ from the photographs depending on the production batch

Testing on LED function

Be sure to test the LED lights before making the lighting, note that the LED white wire to the negative, gray wire to the positive reference to the following figure operation test.



Product comes with tool:



1
White glue:
It dries slowly and can paste materials firmly without trace. Can be used to paste wallpaper and printed paper.

2
Ruler:
For measuring materials to identify the number of materials so as to enhance work efficiency.

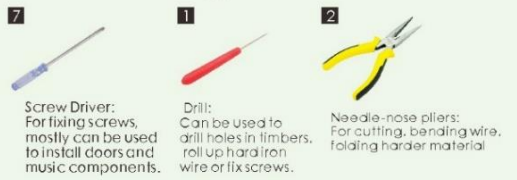
3
Scissors:
Can be used to cut printed paper, cloth, etc.

4
Cutter knife:
For peeling off power wire skin and cutting off materials.

5
Alcohol gel:
It dries fast and can paste materials firmly but may leave some trace. Can be used to paste small metal materials and small components of furniture.

6
Tweezers:
For holding small materials and rolling up iron wire.

Bring your own tools:

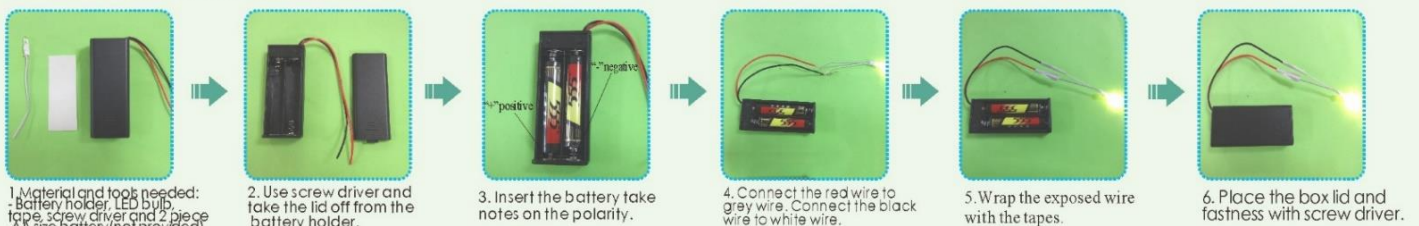


1
Screw Driver:
For fixing screws, mostly can be used to install doors and music components.

2
Drill:
Can be used to drill holes in timbers, roll up hard iron wire or fix screws.

3
Needle-nose pliers:
For cutting, banding wire, folding harder material.

How to assemble the battery holder



1 Material and tool needed:
- Battery holder, LED bulb, tape, screw driver and 2 piece AA size battery (not provided)

2 Use screw driver and take the lid off from the battery holder.

3 Insert the battery take notes on the polarity.

4 Connect the red wire to gray wire, Connect the black wire to white wire.

5 Wrap the exposed wire with the tapes.

6 Place the box lid and fastness with screw driver.

Example of parts rule:

A01: The parts are directly in the box.; B01: parts in bag B; C01: part in bag C, and so on.
(Note: display the printing paper A09-01 in the step: the printing paper is placed directly in the box, part number is A09-01)

M905 Material list Unit: cm

(1/4)

Bag A	scale:1:6 A01 board(wood color) 20*17*0.5(1piece)	scale:1:4 A02 board(vermilion) 11.5*5.8*0.5(1piece)	scale:1:3 A03 board(vermilion) 7*4.5*0.3(1piece)	scale:1:4 A04 board(vermilion) 10.8*4.5*0.3(1piece)	scale:1:2 A05 board(vermilion edge) 6.3*5*0.3(1piece)	scale:1:4 A06 board(vermilion) 12.5*7*0.5(1piece)	scale:1:6 A07 board(vermilion) 12.2*11.5*0.3(1piece)
scale:1:3 A08 board(vermilion) 8.5*8.2*0.3(1piece)	scale:1:3 A09 board(vermilion) 6.8*6.7*0.5(1piece)	scale:1:4 A10 board(vermilion) 6.7*6.7*0.5(1piece)	scale:1:3 A11 board(black edge) 9.4*4.8*0.3(1piece)	scale:1:3 A12 board(black edge) 9.4*4.8*0.3(1piece)	scale:1:2 A13 board(black edge) 5.5*4.2*0.3(1piece)	scale:1:2 A14 board(black edge) 5.5*4.2*0.3(1piece)	scale:1:3 A15 board(black edge) 7*4.8*0.3(1piece)
scale:1:5 A16 corrugate paper (black) 16*16(1piece)	Bag B		scale:1:3 B01 wood(vermilion) 6.8*2.3*0.2(2pieces)	scale:1:2 B02 wood(vermilion) 5.8*1.9*0.2(1piece)	scale:1:3 B03 wood(black) 7.8*2.5*0.2(2pieces)	scale:1:2 B04 wood(black) 4.6*0.3*0.2(2pieces)	scale:1:2 B05 wood(black) 4.6*0.3*0.2(2pieces)
scale:1:2 B06 wood(black) 4.8*0.3*0.2(1piece)	scale:1:2 B07 wood(black) 4.8*0.3*0.2(1piece)	scale:1:2 B08 wood(black) 4.3*0.3*0.2(1piece)	scale:1:2 B09 wood(black) 4.3*0.3*0.2(1piece)	scale:1:3 B10 wood(black) 9.4*1.2*0.2(1piece)	scale:1:2 B11 wood(black) 5.6*1*0.2(1piece)	scale:1:3 B12 round wood(black) 0.3*0.3*9.4(1piece)	scale:1:2 B13 round wood(black) 0.3*0.3*5.5(1piece)
scale:1:3 B14 wood(black) 6.6*2.1*0.2(1piece)	scale:1:2 B15 wood(light brown) 5.8*0.3*0.2(1piece)	scale:1:1 B16 wood(light brown) 3*0.3*0.2(4pieces)	scale:1:3 B17 wood(light brown) 7*0.3*0.2(1piece)	scale:1:1 B18 wood(light brown) 2.5*0.3*0.2(2pieces)	scale:1:2 B19 wood(light brown) 5.6*0.3*0.2(2pieces)	Bag C	
scale:1:2 C02 wood(light brown) 5*2.5*0.2(1piece)	scale:1:2 C03 wood(light brown) 3.7*2.6*0.2(1piece)	scale:1:2 C04 wood(light brown) 3*3*0.2(1piece)	scale:1:2 C05 wood(light brown) 3.8*2*0.2(1piece)	scale:1:3 C06 wood(light brown) 8.5*1.5*0.2(1piece)	scale:1:2 C07 wood(light brown) 5*0.8*0.2(1piece)	scale:1:1 C08 wood(black) 1*1*0.4(4pieces)	scale:1:2 C01 wood(light brown) 5*3*0.2(1piece)

M905 Material list Unit: cm

(2/4)

scale:1:2 C10 wood(grey) 3.4*2.2*0.2(1piece)	scale:1:2 C11 wood(grey) 3.4*1.3*0.2(1piece)	scale:1:1 C12 wood(grey) 1*1*0.4(2pieces)	scale:1:2 C13 wood(vermilion) 4.2*1.7*0.2(2pieces)	scale:1:2 C14 wood(vermilion) 5*1.8*0.2(1piece)	scale:1:2 C15 wood(vermilion) 6.4*0.6*0.2(2pieces)	scale:1:1 C16 wood(vermilion) 3*1.8*0.2(2pieces)	scale:1:2 C17 wood(black) 3.5*1.5*0.2(2pieces)	
scale:1:2 C18 wood(black) 3.7*1.7*0.2(2pieces)	scale:1:2 C19 wood(black) 5.5*0.3*0.2(1piece)	Bag D		scale:1:3 D01 wood(white) 7.1*4.2*0.2(1piece)	scale:1:1 D02 wood(white) 1.6*1.3*0.2(5pieces)	scale:1:1 D03 wood(white) 1.6*0.6*0.2(1piece)	scale:1:1 D04 wood(light brown) 1.8*0.8*0.2(2pieces)	
scale:1:2 D05 wood(wood color) 3.7*1.2*0.5(1piece)	scale:1:4 D06 wood(wood color) 11.2*1.2*0.3(1piece)	scale:1:1 D07 wood(wood color) 1.5*1.2*0.5(1piece)	scale:1:2 D08 wood(grey) 5.7*0.7*0.2(1piece)	scale:1:4 D09 wood(grey) 11.2*0.7*0.2(1piece)	scale:1:1 D10 wood(grey) 1.5*0.7*0.2(1piece)	scale:1:1 D11 wood(white) 2.4*1.5*0.4(2pieces)	side view: scale:1:1 D12 wood(grey) Length=1.5(2pieces)	
scale:1:2 D13 wood(wood color) 6.3*0.5*0.15(2pieces)	scale:1:3 D14 wood(wood color) 8*0.5*0.15(2pieces)	scale:1:2 D15 wood(wood color) 5.5*0.5*0.15(2pieces)	scale:1:1 D16 wood(wood color) 0.5*0.3*0.15(6pieces)	Bag E		scale:1:2 E01 wood(black) 4.6*1.6*0.2(1piece)	scale:1:2 E02 wood(black) 4.6*1.1*0.2(2pieces)	scale:1:1 E03 wood(black) 1.2*0.2*0.2(4pieces)
scale:1:2 E04 wood(black) 4.8*1.4*0.2(1piece)	scale:1:1 E05 wood(black) 1.4*0.7*0.2(2pieces)	scale:1:1 E06 wood(black) 1.4*1.1*0.2(1piece)	scale:1:1 E07 wood(black) 1.4*0.5*0.2(2pieces)	scale:1:1 E08 round wood (wood color) 0.4*0.4*1.3(3pieces)	scale:1:2 E09 wood(wood color) 3.4*2.4*0.2(1piece)	scale:1:2 E10 wood(white) 3.4*0.8*0.2(2pieces)	scale:1:1 E11 wood(white) 2*0.2*0.2(4pieces)	
scale:1:1 E12 wood(wood color) 1.6*1.4*0.2(1piece)	scale:1:1 E13 wood(white) 1.5*1.5*0.2(2pieces)	scale:1:1 E14 wood(black) 1.8*1.6*0.2(2pieces)	scale:1:1 E15 wood(black) 0.9*0.3*0.2(2pieces)	scale:1:1 E16 wood(black) 0.6*0.3*0.2(4pieces)	scale:1:1 E17 wood(black) 1.2*0.2*0.2(4pieces)	scale:1:1 E18 wood(black) 1.5*1*0.2(4pieces)	scale:1:1 E19 wood(black) 1.6*1.6*0.2(2pieces)	

M905 Material list

Unit: cm

(3/4)

Bag F	 scale 1:2 F01wood(light brown) 4.2*2*0.2(1piece)	 scale 1:2 F02wood(light brown) 4.2*0.2*0.2(2pieces)	 scale 1:1 F03wood(light brown) 2.8*0.8*0.2(1piece)	 scale 1:1 F04wood(light brown) 2*1*0.2(1piece)	 scale 1:1 F05wood(light brown) 1.6*0.2*0.2(2pieces)	 scale 1:2 F06wood(light brown) 5*4*0.2(1piece)	 scale 1:2 F07wood(light brown) 4*2.4*0.2(1piece)
 scale 1:2 F08wood(light brown) 3.8*0.8*0.2(1piece)	 scale 1:2 F09wood(light brown) 3.4*1.2*0.2(1piece)	 scale 1:2 F10wood(light brown) 3.4*0.7*0.2(2pieces)	 scale 1:1 F11wood(light brown) 0.8*0.2*0.2(2pieces)	 scale 1:1 F12 round wood (wood color) 0.4*0.4*1(2pieces)	 scale 1:1 F13wood(light brown) 2.4*2*0.2(1piece)	 scale 1:1 F14wood(light brown) 2.8*1.5*0.2(1piece)	 scale 1:1 F15wood(light brown) 1.6*1.4*0.2(2pieces)
 scale 1:1 F16wood(light brown) 2.2*0.6*0.2(1piece)	 scale 1:1 F17wood(light brown) 1.3*1.3*0.2(1piece)	 scale 1:1 F18wood(light brown) 0.9*0.2*0.2(2pieces)	 scale 1:1 F19wood(light brown) 1.2*0.9*0.2(2pieces)	Bag G	 scale 1:1 G01wood(black) 3.9*1.6*0.2(3pieces)	 scale 1:1 G02wood(black) 1.4*0.5*0.2(3pieces)	 scale 1:1 G03wood(light brown) 2*2*0.2(1piece)
 scale 1:1 G04wood(light brown) 0.6*0.3*0.2(4pieces)	 scale 1:1 G05wood(wood color) 2*2*0.2(1piece)	 scale 1:1 G06wood(wood color) 2*2*0.2(1piece)	 scale 1:1 G07wood(light brown) 2.8*2.5*0.2(1piece)	 scale 1:1 G08wood(black) 1*1*0.2(1piece)	 scale 1:2 G09 round wood(black) 0.3*0.3*3.8(1piece)	 scale 1:1 G10wood(brown) 1.5*1.5*0.15(2pieces)	 scale 1:1 G11wood(brown) 1.5*0.4*0.15(2pieces)
 scale 1:1 G12wood(brown) 1.6*0.8*0.15(1piece)	 scale 1:1 G13wood(brown) 1.3*0.6*0.15(1piece)	 scale 1:1 G14wood(brown) 1.4*1*0.2(2piece)	 scale 1:1 G15wood(brown) 0.6*0.2*0.2(2pieces)	 scale 1:1 G16wood(brown) 1.4*1.1*0.2(1piece)	 scale 1:1 G17wood(black) 1.4*1*0.4(1piece)	 scale 1:1 G18wood(wood color) 2.1*1.8*0.2(1piece)	 scale 1:1 G19wood(wood color) 0.9*0.4*0.2(4pieces)
 scale 1:1 G20wood(dark green) 1*0.4*0.15(6pieces)	 scale 1:4 G21wood(wood color) 6*3.5*0.2(1piece)		Bag H	 H01 cotton cloth(red) 9*7(1piece)	 H02 flower cloth (red/white) 6*4(1piece)	 H03 cloth(beige) 17*7(1piece)	 H04 cloth(brown) 5*4(1piece)

M905 Material list

Unit: cm

(4/4)

 H05 non-woven fabric (white) 9*7(1piece)	 H06 cotton(white) (some)	 H07 cardboard(white) 12*9(1piece)	 H08 paper(white) 4*2(1piece)	 H09paper(light brown) 18*3(1piece)	 H10 paper(pink) 5*4(1piece)	 H11 paper(silver) 3*3(1piece)	 H12 pvc film(transparent) 12*6(1piece)
 H13 rubber hose (transparent) length=15(1piece)	 H14 bead(white) (2pieces)	 H15 bead(gold) (1piece)	 H16 plastic bead (pink/transparent) (1piece)	 H17 plastic bead(white) (1piece)	 H18 plastic bead(white) (1piece)	 H19 plastic bead(yellow) (3pieces)	 H20 wooden bead (wood color) (4pieces)
 H21 wooden bead (wood color) (4pieces)	 H22 wooden bead (wood color) (1piece)	 H23 wooden bead (wood color) (1piece)	 H24 flower bud(pink) (6pieces)	 H25 flower bud(yellow) (3pieces)	 H26 flower bud(purple) (3pieces)	 H27 flower bud(light blue) (3pieces)	 H28 Iron wire(black) length=35(1piece)
 H29 iron wire(white) length=4(1piece)	 H30 artificial flower (red/white) (2pieces)	 H31 artifical plant(green) (2pieces)	 H32 artifical bamboo (green) (1piece)	 H33 artifical tree(green) (1piece)	 H34 dry moss(green) (some)	 H35 LED lamp with wire (7pieces)	 H36 battery holder(black) (1piece)
 H37 adhesive paper (1piece)	 H38 sand paper (1piece)						

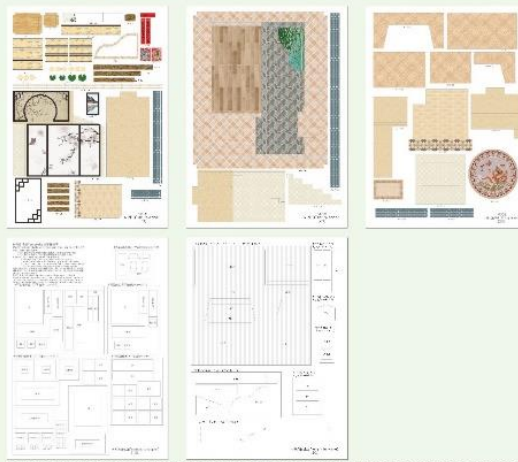
details of miniature kit

Name	Material package	Name	Material package
Printing paper	Bag A-A17(A1 printing and template papers are shown on A17 paper, total 5 pieces A4)	Slippers	H bag+ template paper
Taishi chair	E bag+ H bag+ template paper	Gate	A bag+ C bag+ printing paper+ template paper
Table	E bag+ H bag+ printing paper+ template paper	Steps	D bag+ printing paper
Small table	F bag+ printing paper	Roof	A bag+ B bag+ C bag+ printing paper+ template paper
Small chair	E bag+ H bag	Outer frame	A bag+ B bag+ C bag+ H bag+ printing paper+ template paper
Long chair	F bag+ H bag+ printing paper+ template paper	Battery holder	H bag
Bedside chair	F bag+ template paper		
Bed	E bag+ H bag+ template paper		
Dressing table&stool	F bag+ H bag+ template paper		
Floor lamp	G bag+ H bag+ printing paper		
Chandelier	G bag+ H bag+ printing paper		
Chandelier	G bag+ H bag+ printing paper		
Outer light	G bag+ H bag+ printing paper		
Potted plant	G bag+ H bag+ printing paper		
Lotus pond	G bag+ H bag+ template paper+ printing paper		
Flower pot	D bag+ H bag+ template paper		
Outer wall	D bag+ printing paper		
Hanger	G bag+ H bag		

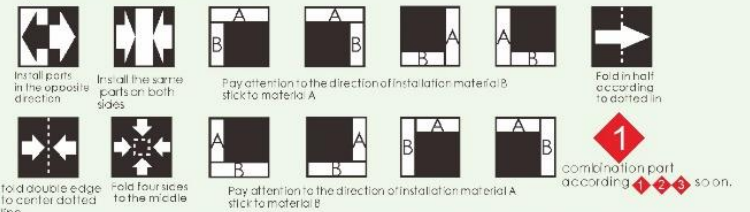
Thumbnail of material list(reference only)



Thumbnail of printing paper & template paper(reference only)

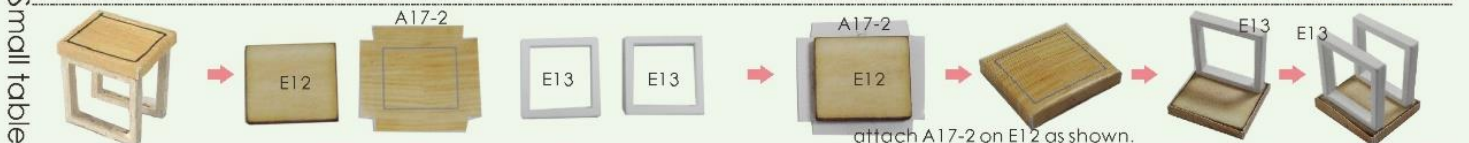
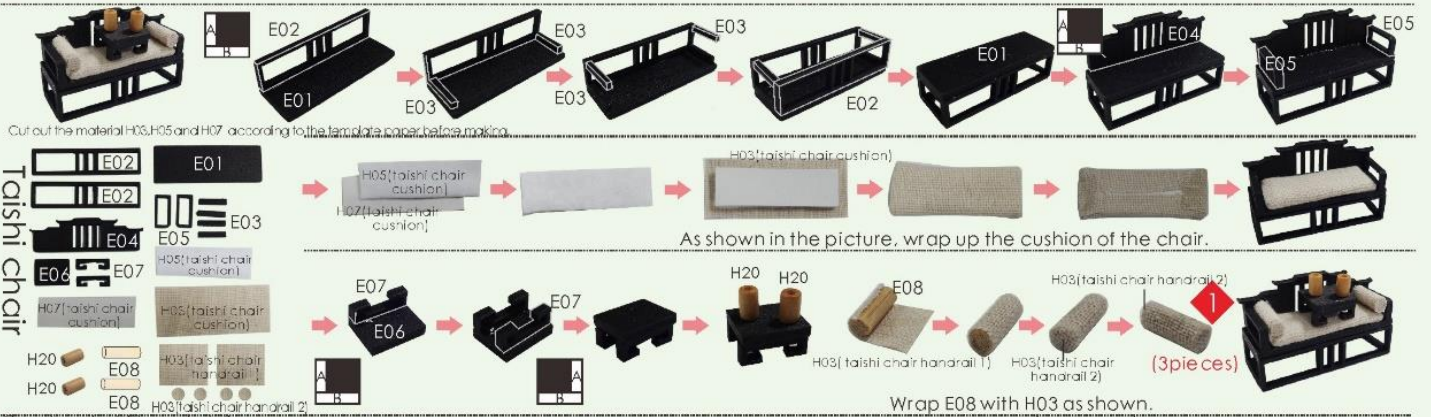


Symbol description used



Welcome to the little DIY world, now come with me!

2



3

Small chair

Small chair assembly diagram showing parts E14, E15, E16, E17, E18, E19, H05, H07, and H03. The diagram shows the assembly steps from parts to a completed chair with a red cushion. A red '2' is placed on the cushion template.

Cut out the material H05, H06 and H07 according to the template paper before making.

Wrap the cushion of the small chair as shown.

Small chair assembly steps showing the assembly of the chair frame from parts E14, E15, E16, E17, E18, and E19.

Pillow assembly diagram showing parts H01, H02, H03, and H06. The diagram shows the assembly of a pillow with a red floral pattern and a red cover. A red '2' is placed on the pillow template.

As shown, cut out the linen H03 according to the pillow template and glue it to the red line position. Fold it in half, put in the cotton H06, and glue the final notch as shown.

Attach H02 on the pillow.

Make 2 linen pillows and 5 red pillows in the same way.

Long chair

Long chair assembly diagram showing parts F01, F02, F03, F04, F05, H05, H07, and H03. The diagram shows the assembly of a long chair with a red cushion. A red '1' is placed on the chair frame.

Cut out the material H05, H06 and H07 according to the template paper before making.

Long chair assembly steps showing the assembly of the chair frame from parts F01, F02, F03, F04, and F05.

4

Long chair cushion assembly diagram showing parts H05, H07, and H03. The diagram shows the assembly of a cushion for the long chair. A red '1' is placed on the chair frame.

As shown, wrap the cushion of the long chair.

Bedside chair

Bedside chair assembly diagram showing parts F10, F11, F12, H05, H07, H03, H02, and H03. The diagram shows the assembly of a bedside chair with a red floral patterned cushion. A red '1' is placed on the chair frame.

Cut out the material H05, H06 and H07 according to the template paper before making.

Bedside chair assembly steps showing the assembly of the chair frame from parts F10, F11, and F12.

Bed

Bed assembly diagram showing parts F06, F07, F08, H05, H07, H03, H02, and H01. The diagram shows the assembly of a bed with a red floral patterned mattress. A red '1' is placed on the bed frame.

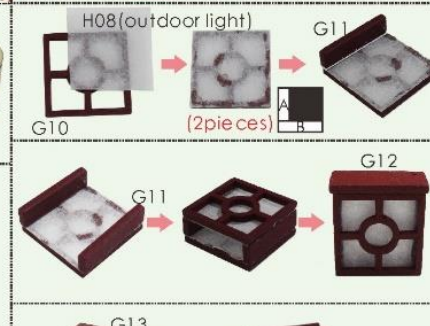
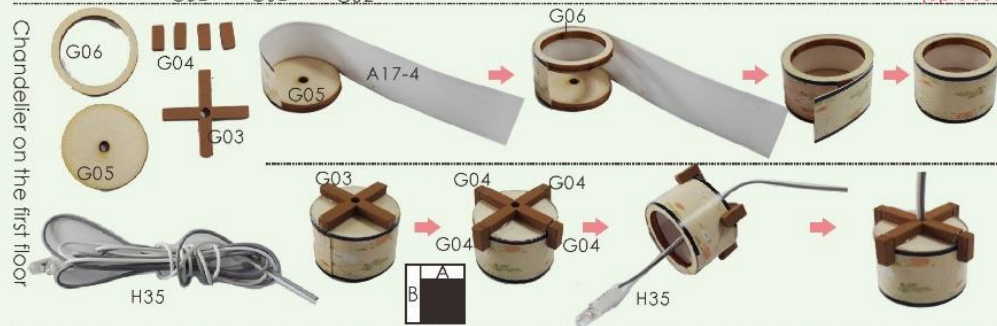
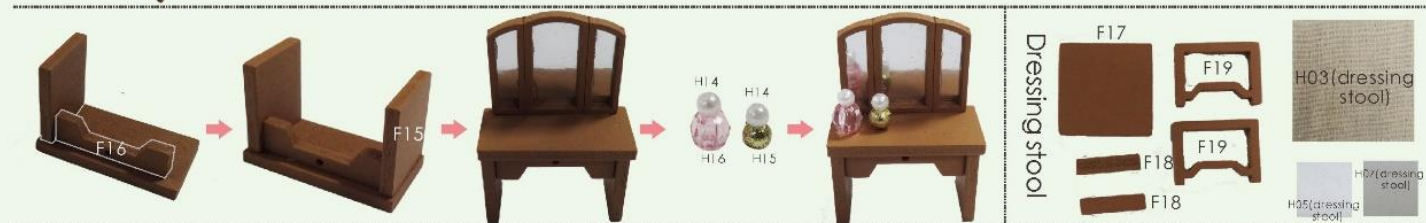
Cut out the material H01, H02, H03, H05 and H07 according to the template paper before making.

Refer to the previous practice of the taishi chair.

As shown, wrap the cushion of the bedside chair.

Wrap the mattress as shown.

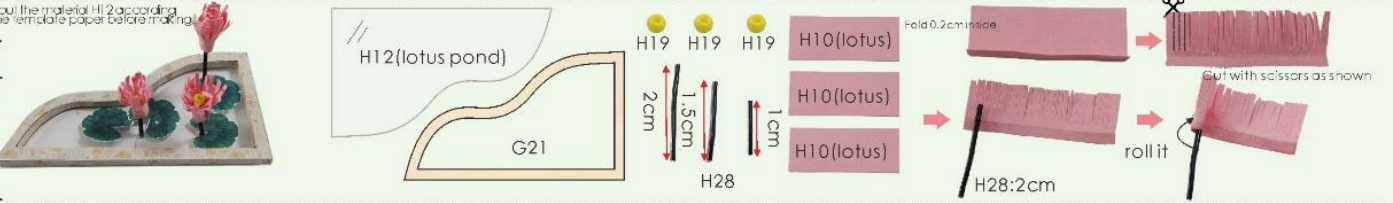
5



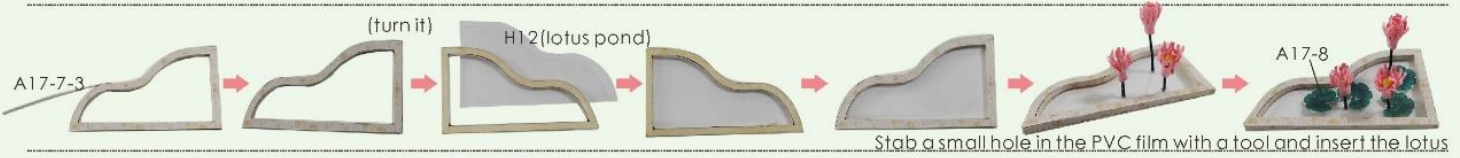
Potted plant



Lotus pond

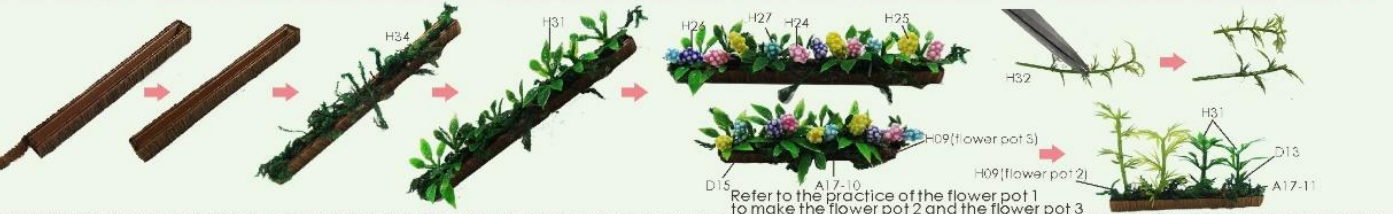


Make three lotus flowers of different lengths in the same way.



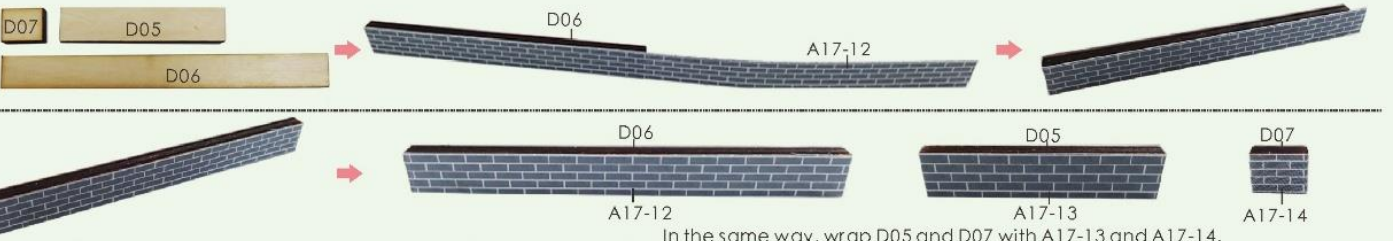
Stab a small hole in the PVC film with a tool and insert the lotus

Flower pot



Refer to the practice of the flower pot 1 to make the flower pot 2 and the flower pot 3

Outer wall



In the same way, wrap D05 and D07 with A17-13 and A17-14.

Hanger



Slippers



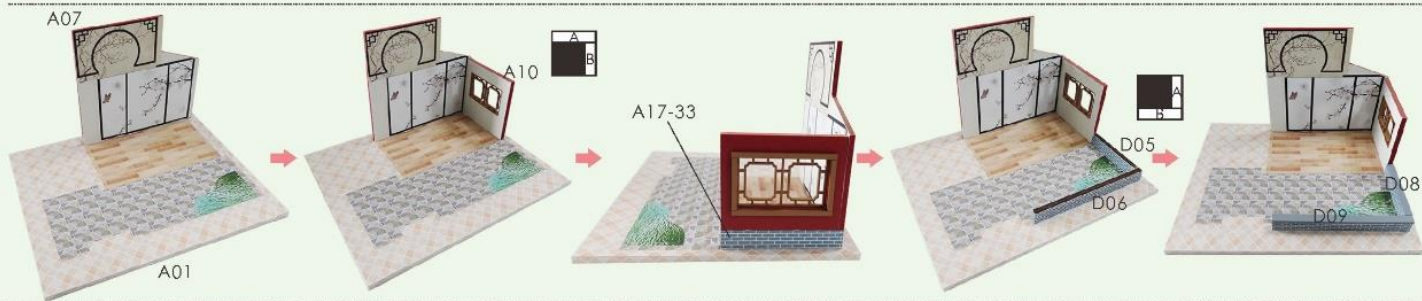
As shown, cut out H04 according to the pattern of the slippers, and then glue the slippers.



12



13



14



15



How to assemble the battery holder

Statement: the lamp wires cannot be inserted into the output socket.

- Can use 7 batteries
- Please notice the place of anode and cathode when pit in the batteries
- Rechargeable batteries are not blunt electricity
- Rechargeable batteries can only be charged under adult supervision
- Rechargeable batteries should be removed from the toy before charging
- Different types of batteries cannot mix; Do not mix new batteries in use with semi-used batteries.
- Run out of battery should be removed from the toy
- The power shall not be short circuit



16



17

(For updated version, the parts need to be purchased separately)



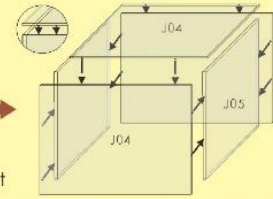
scale 1:10
J04 Transparent cover
20*17*0.15cm
3pieces



scale 1:10
J05 Transparent cover
20*16.7*0.15cm
2pieces



1. Tear off kraft paper of each piece of transparent cover.



2. Paste J04 and J05 together to complete the dust proof cover as shown.

Photo of Dust proof cover



Attention: Please keep the instruction for future enquires after installation.